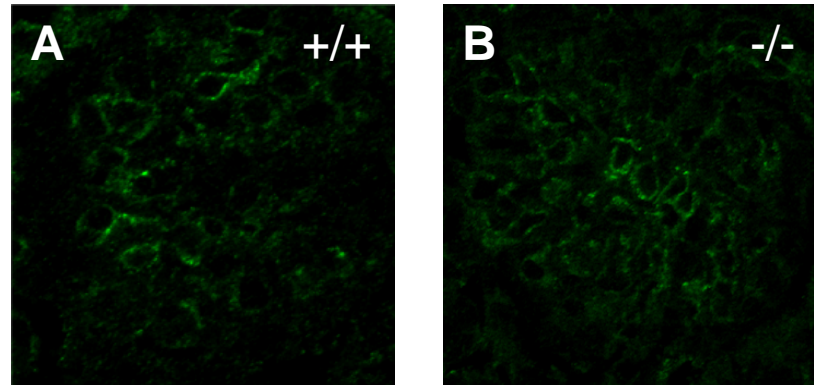


Khan et al.  
Figure S1



**Figure S1.** Frozen sections (5  $\mu$ M thickness) from age-matched *Itgb8*<sup>+/+</sup> (A, +/+) and *Itgb8*<sup>-/-</sup> (B, -/-) kidneys were fixed in paraformaldehyde and labeled for endothelial cells by blocking with donkey serum (5% in PBS containing 0.2% Triton X-100, 1 hr, room temp), then incubating with rat anti-mouse Tie2. Slides were washed with PBS, then incubated with Alexa 488-conjugated donkey anti-rat IgG, mounted, and viewed by confocal microscopy at 630X magnification. Representative, individual glomeruli are shown.