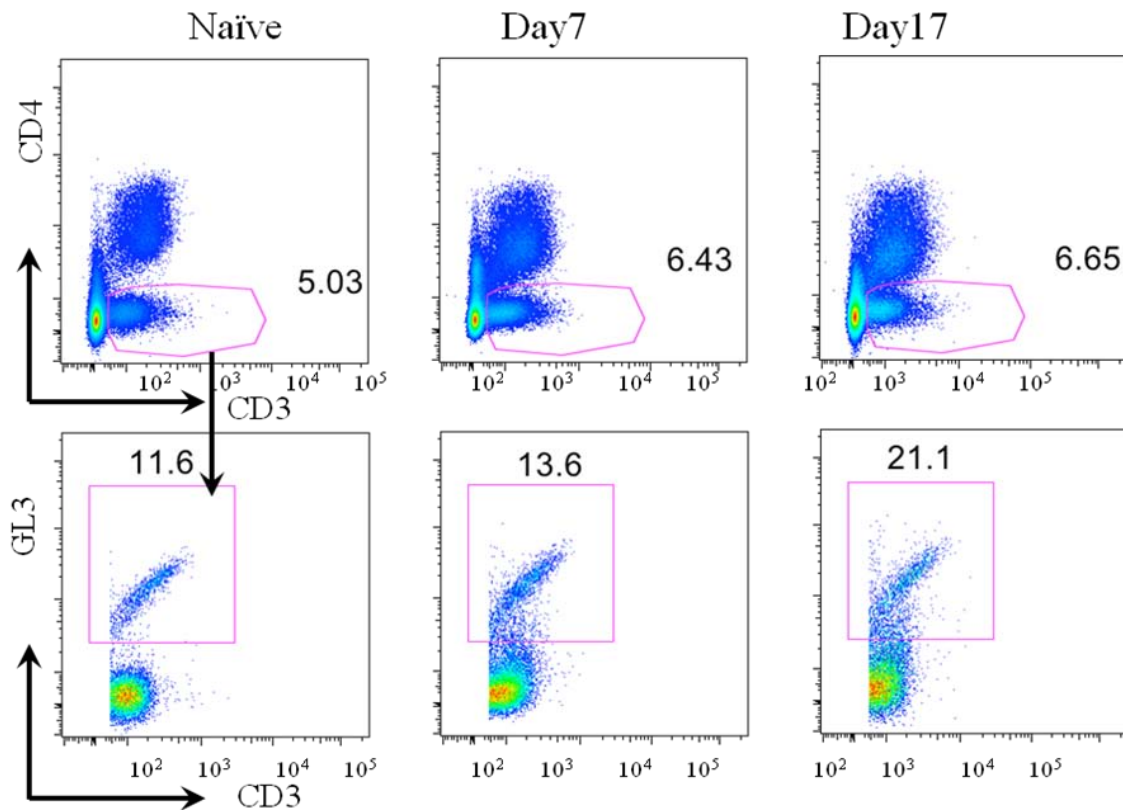


S2.



S2. GL3+ cells increase in the CD3+ population of cells after bleomycin administration. A) Cells from homogenized lung were gated based on forward and side scatter to gate on the predominantly T cell population (based on size). Modest increases were seen in the CD3+ population over time. B: Backgating on the CD3+ population demonstrates  $\gamma\delta$  T cells (GL3+ cells) numbers are doubled in the CD3+ population.