

Table S1. Fold change between *Nfkb1*^{-/-}*Ii10*^{-/-} and *Ii10*^{-/-} BMDM for all 216 probe sets induced at least 4-fold by LPS.

| Affy ID | Symbol | Name | FC | p |
|--------------|-----------|---|--------|------|
| 1420549_at | Gbp1 | guanylate nucleotide binding protein 1 | 182.13 | 0.00 |
| 1419043_a_at | ligp1 | interferon inducible GTPase 1 | 19.01 | 0.01 |
| 1421008_at | Rsad2 | radical S-adenosyl methionine domain containing 2 | 14.27 | 0.00 |
| 1451905_a_at | Mx1 | myxovirus (influenza virus) resistance 1 | 14.03 | 0.01 |
| 1424339_at | Oasl1 | 2'-5' oligoadenylate synthetase-like 1 | 13.77 | 0.00 |
| 1419042_at | ligp1 | interferon inducible GTPase 1 | 13.01 | 0.01 |
| 1422095_a_at | Tyki | thymidylate kinase family LPS-inducible member | 12.68 | 0.01 |
| 1449009_at | Tgtp | T-cell specific GTPase | 12.30 | 0.01 |
| 1418612_at | Slfn1 | schlafen 1 | 12.23 | 0.02 |
| 1418293_at | lfit2 | interferon-induced protein with tetratricopeptide repeats 2 | 10.68 | 0.01 |
| 1435331_at | AI447904 | expressed sequence AI447904 | 10.44 | 0.02 |
| 1421009_at | Rsad2 | radical S-adenosyl methionine domain containing 2 | 10.40 | 0.00 |
| 1438676_at | Mpa2l | macrophage activation 2 like | 10.36 | 0.00 |
| 1449497_at | Il12b | interleukin 12b | 10.21 | 0.00 |
| 1418191_at | Usp18 | ubiquitin specific peptidase 18 | 9.97 | 0.01 |
| 1450484_a_at | Tyki | thymidylate kinase family LPS-inducible member | 9.67 | 0.00 |
| 1419530_at | Il12b | interleukin 12b | 9.13 | 0.00 |
| 1417679_at | Gfi1 | growth factor independent 1 | 8.50 | 0.00 |
| 1418219_at | Il15 | interleukin 15 | 7.25 | 0.00 |
| 1451050_at | Nt5c3 | 5'-nucleotidase, cytosolic III | 7.01 | 0.00 |
| 1419676_at | Mx2 | myxovirus (influenza virus) resistance 2 | 6.90 | 0.00 |
| 1431591_s_at | LOC677168 | hypothetical protein LOC677168 | 6.87 | 0.01 |
| 1428027_at | NA | NA | 6.62 | 0.00 |
| 1438716_at | AI451617 | expressed sequence AI451617 | 6.33 | 0.00 |
| 1417793_at | ligp2 | interferon inducible GTPase 2 | 6.30 | 0.00 |
| 1418930_at | Cxcl10 | chemokine (C-X-C motif) ligand 10 | 6.06 | 0.00 |
| 1451537_at | Chi3l1 | chitinase 3-like 1 | 5.82 | 0.00 |
| 1418652_at | Cxcl9 | chemokine (C-X-C motif) ligand 9 | 5.76 | 0.01 |
| 1430005_a_at | Batf2 | basic leucine zipper transcription factor, ATF-like 2 | 5.49 | 0.00 |
| 1425806_a_at | Surb7 | SRB7 (suppressor of RNA polymerase B) homolog (S. cerevisiae) | 5.38 | 0.00 |
| 1450783_at | lfit1 | interferon-induced protein with tetratricopeptide repeats 1 | 5.16 | 0.01 |
| 1450297_at | Il6 | interleukin 6 | 5.02 | 0.00 |
| 1419026_at | Daxx | Fas death domain-associated protein | 4.93 | 0.00 |
| 1453939_x_at | LOC677168 | hypothetical protein LOC677168 | 4.84 | 0.00 |
| 1417292_at | lfi47 | interferon gamma inducible protein 47 | 4.83 | 0.01 |
| 1449227_at | Ch25h | cholesterol 25-hydroxylase | 4.83 | 0.00 |
| 1417141_at | lgtp | interferon gamma induced GTPase | 4.72 | 0.00 |
| 1436058_at | Rsad2 | radical S-adenosyl methionine domain containing 2 | 4.60 | 0.01 |
| 1425156_at | Gbp6 | guanylate binding protein 6 | 4.55 | 0.00 |
| 1425394_at | BC023105 | cDNA sequence BC023105 | 4.50 | 0.00 |
| 1450403_at | Stat2 | signal transducer and activator of transcription 2 | 4.46 | 0.01 |
| 1419697_at | Cxcl11 | chemokine (C-X-C motif) ligand 11 | 4.38 | 0.07 |
| 1450173_at | Ripk2 | receptor (TNFRSF)-interacting serine-threonine kinase 2 | 4.22 | 0.00 |
| 1448940_at | Trim21 | tripartite motif protein 21 | 4.19 | 0.00 |
| 1419149_at | Serpine1 | serine (or cysteine) peptidase inhibitor, clade E, member 1 | 4.11 | 0.00 |
| 1450788_at | Saa1 | serum amyloid A 1 | 4.10 | 0.00 |
| 1449450_at | Ptges | prostaglandin E synthase | 4.08 | 0.00 |
| 1418317_at | Lhx2 | LIM homeobox protein 2 | 3.99 | 0.01 |
| 1421679_a_at | Cdkn1a | cyclin-dependent kinase inhibitor 1A (P21) | 3.97 | 0.00 |
| 1450446_a_at | Socs1 | suppressor of cytokine signaling 1 | 3.97 | 0.01 |
| 1421911_at | Stat2 | signal transducer and activator of transcription 2 | 3.88 | 0.00 |
| 1418077_at | Trim21 | tripartite motif protein 21 | 3.85 | 0.00 |

| | | | | |
|--------------|---------------|--|------|------|
| 1421473_at | Il1a | interleukin 1 alpha | 3.82 | 0.00 |
| 1419604_at | Zbp1 | Z-DNA binding protein 1 | 3.73 | 0.02 |
| 1419858_at | lfi203 | interferon activated gene 203 | 3.69 | 0.00 |
| 1450639_at | Slc28a2 | solute carrier family 28 (sodium-coupled nucleoside transporter), member 2 | 3.66 | 0.01 |
| 1451340_at | Arid5a | AT rich interactive domain 5A (Mrf1 like) | 3.58 | 0.00 |
| 1451567_a_at | lfi203 | interferon activated gene 203 | 3.53 | 0.01 |
| 1436899_at | 2700019D07Rik | RIKEN cDNA 2700019D07 gene | 3.43 | 0.00 |
| 1449449_at | Ptges | prostaglandin E synthase | 3.43 | 0.00 |
| 1452178_at | Plec1 | plectin 1 | 3.34 | 0.00 |
| 1435454_a_at | BC006779 | cDNA sequence BC006779 | 3.34 | 0.01 |
| 1427736_a_at | Ccr12 | chemokine (C-C motif) receptor-like 2 | 3.32 | 0.00 |
| 1434372_at | AW112010 | expressed sequence AW112010 | 3.07 | 0.05 |
| 1421236_at | Ripk2 | receptor (TNFRSF)-interacting serine-threonine kinase 2 | 2.99 | 0.00 |
| 1424698_s_at | Gca | grancalcin | 2.97 | 0.00 |
| 1449028_at | Rhou | ras homolog gene family, member U | 2.95 | 0.00 |
| 1418392_a_at | Gbp3 | guanylate nucleotide binding protein 3 | 2.94 | 0.00 |
| 1426276_at | lfih1 | interferon induced with helicase C domain 1 | 2.89 | 0.00 |
| 1419282_at | Ccl12 | chemokine (C-C motif) ligand 12 | 2.85 | 0.09 |
| 1434380_at | Gbp6 | guanylate binding protein 6 | 2.83 | 0.00 |
| 1424638_at | Cdkn1a | cyclin-dependent kinase inhibitor 1A (P21) | 2.82 | 0.00 |
| 1448436_a_at | lrf1 | interferon regulatory factor 1 | 2.81 | 0.00 |
| 1460415_a_at | Cd40 | CD40 antigen | 2.78 | 0.00 |
| 1449473_s_at | Cd40 | CD40 antigen | 2.77 | 0.00 |
| 1429527_a_at | Plscr1 | phospholipid scramblase 1 | 2.76 | 0.00 |
| 1420499_at | Gch1 | GTP cyclohydrolase 1 | 2.73 | 0.00 |
| 1453181_x_at | Plscr1 | phospholipid scramblase 1 | 2.70 | 0.00 |
| 1436172_at | Samd9l | sterile alpha motif domain containing 9-like | 2.52 | 0.02 |
| 1450672_a_at | Trex1 | three prime repair exonuclease 1 | 2.48 | 0.02 |
| 1419721_at | Gpr109a | G protein-coupled receptor 109A | 2.46 | 0.01 |
| 1417262_at | Ptgs2 | prostaglandin-endoperoxide synthase 2 | 2.33 | 0.00 |
| 1449027_at | Rhou | ras homolog gene family, member U | 2.27 | 0.01 |
| 1419714_at | Cd274 | CD274 antigen | 2.26 | 0.00 |
| 1417851_at | Cxcl13 | chemokine (C-X-C motif) ligand 13 | 2.26 | 0.34 |
| 1455393_at | Cp | ceruloplasmin | 2.25 | 0.09 |
| 1443414_at | C78513 | EST C78513 | 2.22 | 0.00 |
| 1450829_at | Tnfaip3 | tumor necrosis factor, alpha-induced protein 3 | 2.17 | 0.00 |
| 1427932_s_at | 1200016E24Rik | RIKEN cDNA 1200016E24 gene | 2.16 | 0.00 |
| 1419075_s_at | Saa2 | serum amyloid A 2 | 2.10 | 0.00 |
| 1417371_at | Peli1 | pellino 1 | 2.01 | 0.00 |
| 1422924_at | Tnfsf9 | tumor necrosis factor (ligand) superfamily, member 9 | 2.00 | 0.00 |
| 1454070_a_at | Dhdh1 | DDHD domain containing 1 | 1.94 | 0.01 |
| 1425570_at | Slamf1 | signaling lymphocytic activation molecule family member 1 | 1.94 | 0.00 |
| 1417495_x_at | Cp | ceruloplasmin | 1.93 | 0.14 |
| 1419607_at | Tnf | tumor necrosis factor | 1.91 | 0.00 |
| 1420380_at | Ccl2 | chemokine (C-C motif) ligand 2 | 1.91 | 0.01 |
| 1418992_at | F10 | coagulation factor X | 1.91 | 0.10 |
| 1418535_at | Rgl1 | ral guanine nucleotide dissociation stimulator,-like 1 | 1.89 | 0.00 |
| 1417494_a_at | Cp | ceruloplasmin | 1.86 | 0.09 |
| 1424067_at | Icam1 | intercellular adhesion molecule | 1.86 | 0.00 |
| 1448734_at | Cp | ceruloplasmin | 1.84 | 0.19 |
| 1450698_at | Dusp2 | dual specificity phosphatase 2 | 1.84 | 0.01 |
| 1423006_at | Pim1 | proviral integration site 1 | 1.82 | 0.03 |
| 1448728_a_at | Nfkbiz | nuclear factor of kappa light polypeptide gene enhancer in B-cells inhibitor, zeta | 1.82 | 0.02 |
| 1448606_at | Edg2 | endothelial differentiation, lysophosphatidic acid G-protein-coupled receptor, 2 | 1.81 | 0.03 |
| 1448162_at | Vcam1 | vascular cell adhesion molecule 1 | 1.79 | 0.01 |
| 1420981_a_at | Lmo4 | LIM domain only 4 | 1.76 | 0.01 |
| 1421228_at | Ccl7 | chemokine (C-C motif) ligand 7 | 1.72 | 0.16 |

| | | | | |
|--------------|---------|---|------|------|
| 1418240_at | Gbp2 | guanylate nucleotide binding protein 2 | 1.71 | 0.07 |
| 1419212_at | Icosl | icos ligand | 1.71 | 0.01 |
| 1416649_at | Ambp | alpha 1 microglobulin/bikunin | 1.70 | 0.00 |
| 1419537_at | Tcfec | transcription factor EC | 1.70 | 0.02 |
| 1421578_at | Ccl4 | chemokine (C-C motif) ligand 4 | 1.69 | 0.11 |
| 1417143_at | Edg2 | endothelial differentiation, lysophosphatidic acid G-protein-coupled receptor, 2 | 1.67 | 0.04 |
| 1451458_at | Tmem2 | transmembrane protein 2 | 1.66 | 0.06 |
| 1425686_at | Cflar | CASP8 and FADD-like apoptosis regulator | 1.66 | 0.01 |
| 1435133_at | Ugcg | UDP-glucose ceramide glucosyltransferase | 1.65 | 0.00 |
| 1421269_at | Ugcg | UDP-glucose ceramide glucosyltransferase | 1.61 | 0.10 |
| 1425412_at | Nlrp3 | NLR family, pyrin domain containing 3 | 1.54 | 0.03 |
| 1421487_a_at | Nck1 | non-catalytic region of tyrosine kinase adaptor protein 1 | 1.53 | 0.01 |
| 1422474_at | Pde4b | phosphodiesterase 4B, cAMP specific | 1.51 | 0.00 |
| 1418126_at | Ccl5 | chemokine (C-C motif) ligand 5 | 1.51 | 0.58 |
| 1435906_x_at | Gbp2 | guanylate nucleotide binding protein 2 | 1.50 | 0.25 |
| 1417856_at | Relb | avian reticuloendotheliosis viral (v-rel) oncogene related B | 1.50 | 0.01 |
| 1417483_at | Nfkbiz | nuclear factor of kappa light polypeptide gene enhancer in B-cells inhibitor, zeta | 1.50 | 0.11 |
| 1422473_at | Pde4b | phosphodiesterase 4B, cAMP specific | 1.48 | 0.02 |
| 1417496_at | Cp | ceruloplasmin | 1.48 | 0.50 |
| 1423602_at | Traf1 | Tnf receptor-associated factor 1 | 1.47 | 0.02 |
| 1460251_at | Fas | Fas (TNF receptor superfamily member) | 1.46 | 0.01 |
| 1449984_at | Cxcl2 | chemokine (C-X-C motif) ligand 2 | 1.45 | 0.01 |
| 1450769_s_at | Stard5 | StAR-related lipid transfer (START) domain containing 5 | 1.45 | 0.01 |
| 1449591_at | Casp4 | caspace 4, apoptosis-related cysteine peptidase | 1.45 | 0.14 |
| 1422822_at | Stard5 | StAR-related lipid transfer (START) domain containing 5 | 1.45 | 0.01 |
| 1416268_at | Ets2 | E26 avian leukemia oncogene 2, 3' domain | 1.44 | 0.01 |
| 1424711_at | Tmem2 | transmembrane protein 2 | 1.43 | 0.05 |
| 1420331_at | Clec4e | C-type lectin domain family 4, member e | 1.42 | 0.02 |
| 1421268_at | Ugcg | UDP-glucose ceramide glucosyltransferase | 1.41 | 0.23 |
| 1449317_at | Cflar | CASP8 and FADD-like apoptosis regulator | 1.40 | 0.09 |
| 1448881_at | Hp | haptoglobin | 1.39 | 0.10 |
| 1422526_at | Acsl1 | acyl-CoA synthetase long-chain family member 1 | 1.36 | 0.21 |
| 1416576_at | Socs3 | suppressor of cytokine signaling 3 | 1.34 | 0.01 |
| 1419354_at | Klf7 | Kruppel-like factor 7 (ubiquitous) | 1.34 | 0.05 |
| 1421457_a_at | Samsn1 | SAM domain, SH3 domain and nuclear localization signals, 1 | 1.31 | 0.06 |
| 1450918_s_at | Src | Rous sarcoma oncogene | 1.30 | 0.13 |
| 1448558_a_at | Pla2g4a | phospholipase A2, group IVA (cytosolic, calcium-dependent) | 1.29 | 0.06 |
| 1416572_at | Mmp14 | matrix metalloproteinase 14 (membrane-inserted) | 1.29 | 0.58 |
| 1420330_at | Clec4e | C-type lectin domain family 4, member e | 1.28 | 0.02 |
| 1431843_a_at | Nfkbie | nuclear factor of kappa light polypeptide gene enhancer in B-cells inhibitor, epsilon | 1.25 | 0.13 |
| 1417523_at | Plek | pleckstrin | 1.25 | 0.13 |
| 1449399_a_at | Il1b | interleukin 1 beta | 1.25 | 0.45 |
| 1418641_at | Lcp2 | lymphocyte cytosolic protein 2 | 1.23 | 0.15 |
| 1420591_at | Gpr84 | G protein-coupled receptor 84 | 1.21 | 0.44 |
| 1450136_at | Cd38 | CD38 antigen | 1.20 | 0.74 |
| 1419355_at | Klf7 | Kruppel-like factor 7 (ubiquitous) | 1.19 | 0.40 |
| 1418401_a_at | Dusp16 | dual specificity phosphatase 16 | 1.18 | 0.11 |
| 1450643_s_at | Acsl1 | acyl-CoA synthetase long-chain family member 1 | 1.18 | 0.35 |
| 1421065_at | Jak2 | Janus kinase 2 | 1.16 | 0.34 |
| 1427381_at | Irg1 | immunoresponsive gene 1 | 1.16 | 0.64 |
| 1419254_at | Mthfd2 | methylenetetrahydrofolate dehydrogenase (NAD+ dependent), methenyltetrahydrofolate cyclohydrolase | 1.15 | 0.73 |
| 1419665_a_at | Nupr1 | nuclear protein 1 | 1.14 | 0.52 |

| | | | | |
|--------------|---------------|---|-------|------|
| 1437111_at | Zc3h12c | zinc finger CCCH type containing 12C | 1.12 | 0.30 |
| 1418133_at | Bcl3 | B-cell leukemia/lymphoma 3 | 1.11 | 0.53 |
| 1460283_at | Mefv | Mediterranean fever | 1.11 | 0.59 |
| 1419666_x_at | Nupr1 | nuclear protein 1 | 1.11 | 0.60 |
| 1418642_at | Lcp2 | lymphocyte cytosolic protein 2 | 1.10 | 0.55 |
| 1423240_at | Src | Rous sarcoma oncogene | 1.09 | 0.72 |
| 1449439_at | Klf7 | Kruppel-like factor 7 (ubiquitous) | 1.08 | 0.50 |
| 1450826_a_at | Saa3 | serum amyloid A 3 | 1.06 | 0.90 |
| 1433741_at | Cd38 | CD38 antigen | 1.06 | 0.91 |
| 1421066_at | Jak2 | Janus kinase 2 | 1.06 | 0.57 |
| 1455899_x_at | Socs3 | suppressor of cytokine signaling 3 | 1.05 | 0.79 |
| 1417256_at | Mmp13 | matrix metalloproteinase 13 | 1.05 | 0.90 |
| 1448175_at | Ehd1 | EH-domain containing 1 | 1.04 | 0.82 |
| 1456212_x_at | Socs3 | suppressor of cytokine signaling 3 | 1.04 | 0.85 |
| 1418847_at | Arg2 | arginase type II | 1.04 | 0.87 |
| 1422953_at | Fpr-rs2 | formyl peptide receptor, related sequence 2 | 1.02 | 0.96 |
| 1422018_at | Hivep2 | human immunodeficiency virus type I enhancer binding protein 2 | 1.01 | 0.93 |
| 1416012_at | Ehd1 | EH-domain containing 1 | 1.01 | 0.95 |
| 1438841_s_at | Arg2 | arginase type II | -1.05 | 0.85 |
| 1416011_x_at | Ehd1 | EH-domain containing 1 | -1.06 | 0.67 |
| 1423017_a_at | Il1rn | interleukin 1 receptor antagonist | -1.10 | 0.81 |
| 1423289_a_at | 1810029B16Rik | RIKEN cDNA 1810029B16 gene | -1.10 | 0.68 |
| 1437917_at | D530037H12Rik | RIKEN cDNA D530037H12 gene | -1.10 | 0.57 |
| 1416010_a_at | Ehd1 | EH-domain containing 1 | -1.12 | 0.40 |
| 1451798_at | Il1rn | interleukin 1 receptor antagonist | -1.14 | 0.47 |
| 1419561_at | Ccl3 | chemokine (C-C motif) ligand 3 | -1.16 | 0.55 |
| 1416701_at | Rnd3 | Rho family GTPase 3 | -1.22 | 0.57 |
| 1449222_at | Ebi3 | Epstein-Barr virus induced gene 3 | -1.23 | 0.19 |
| 1425663_at | Il1rn | interleukin 1 receptor antagonist | -1.23 | 0.21 |
| 1419356_at | Klf7 | Kruppel-like factor 7 (ubiquitous) | -1.25 | 0.20 |
| 1416700_at | Rnd3 | Rho family GTPase 3 | -1.26 | 0.28 |
| 1419684_at | Ccl8 | chemokine (C-C motif) ligand 8 | -1.35 | 0.54 |
| 1422868_s_at | Gda | guanine deaminase | -1.48 | 0.11 |
| 1421720_a_at | Dtx2 | deltex 2 homolog (Drosophila) | -1.51 | 0.00 |
| 1427035_at | Slc39a14 | solute carrier family 39 (zinc transporter), member 14 | -1.55 | 0.01 |
| 1423996_a_at | Il4ra | interleukin 4 receptor, alpha | -1.57 | 0.03 |
| 1450214_at | Adora2b | adenosine A2b receptor | -1.57 | 0.01 |
| 1426600_at | Slc2a1 | solute carrier family 2 (facilitated glucose transporter), member 1 | -1.58 | 0.02 |
| 1437992_x_at | Gja1 | gap junction membrane channel protein alpha 1 | -1.58 | 0.06 |
| 1415800_at | Gja1 | gap junction membrane channel protein alpha 1 | -1.60 | 0.10 |
| 1438650_x_at | Gja1 | gap junction membrane channel protein alpha 1 | -1.65 | 0.02 |
| 1419209_at | Cxcl1 | chemokine (C-X-C motif) ligand 1 | -1.65 | 0.09 |
| 1426599_a_at | Slc2a1 | solute carrier family 2 (facilitated glucose transporter), member 1 | -1.71 | 0.00 |
| 1438945_x_at | Gja1 | gap junction membrane channel protein alpha 1 | -1.73 | 0.05 |
| 1450808_at | Fpr1 | formyl peptide receptor 1 | -1.74 | 0.21 |
| 1419410_at | Batf | basic leucine zipper transcription factor, ATF-like | -1.87 | 0.00 |
| 1425503_at | Gcnt2 | glucosaminyl (N-acetyl) transferase 2, I-branching enzyme | -1.89 | 0.01 |
| 1428306_at | Ddit4 | DNA-damage-inducible transcript 4 | -2.12 | 0.03 |
| 1423594_a_at | Ednrb | endothelin receptor type B | -2.45 | 0.00 |
| 1428942_at | Mt2 | metallothionein 2 | -2.53 | 0.06 |
| 1416432_at | Pfkfb3 | 6-phosphofructo-2-kinase/fructose-2,6-biphosphatase 3 | -2.68 | 0.00 |
| 1437308_s_at | F2r | coagulation factor II (thrombin) receptor | -2.78 | 0.01 |
| 1452408_at | Trex1 | three prime repair exonuclease 1 | -3.64 | 0.02 |
| 1460197_a_at | Steap4 | STEAP family member 4 | -3.99 | 0.00 |
| 1419082_at | Serpinb2 | serine (or cysteine) peptidase inhibitor, clade B, member 2 | -4.23 | 0.00 |

FC refers to expression in *Nfkb1^{-/-}Il10^{-/-}* BMDM divided by expression in *Il10^{-/-}* BMDM following stimulation with LPS in the presence of exogenous IL-10. p refers to the P-value between genotypes calculated using the Benjamini-Hochberg correction for multiple comparison testing. All listed genes were induced at least 4 fold by LPS in either *Il10^{-/-}* or *Nfkb1^{-/-}Il10^{-/-}* BMDM. Duplicates, ESTs, and hypothetical genes have been removed.

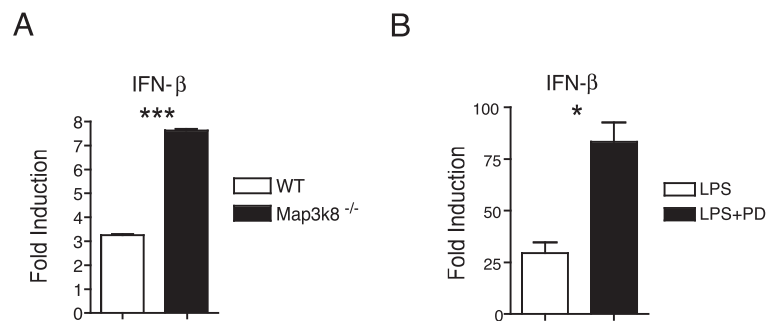


Figure S1. Increased IFN- β expression in the absence of Tpl-2/ERK signaling. A) Fold-induction of IFN- β mRNA in WT and *Map3k8*^{-/-} BMDM 9 hours after stimulation with LPS (10 ng/ml). B) Fold-induction of *Ifnb1* mRNA in WT BMDM stimulated for 4h with LPS in the presence or absence of PD184352 (PD).