

Table W1. List of Primary Antibodies Used for Western Blot Analysis.

Antibody	Catalog ID	Manufacturer Information
APC	OP44	Merck KGaA, Darmstadt, Germany
Axin2	76G6	NEB, Ontario, Canada
β -Actin	A1978	Sigma, St Louis, MO
EGFR	sc-03	Santa Cruz, CA
GAPDH	14C10	Cell Signaling, Danvers, MA
Lamin A/C	V3001	Biomed Corporation, Foster City, CA
p53	V1003	Biomed Corporation, Foster City, CA
Phospho-EGFR (Y1173)	sc-101668	Santa Cruz, CA
Phospho-ERK (T202/Y204)	9101	NEB, Ontario, Canada

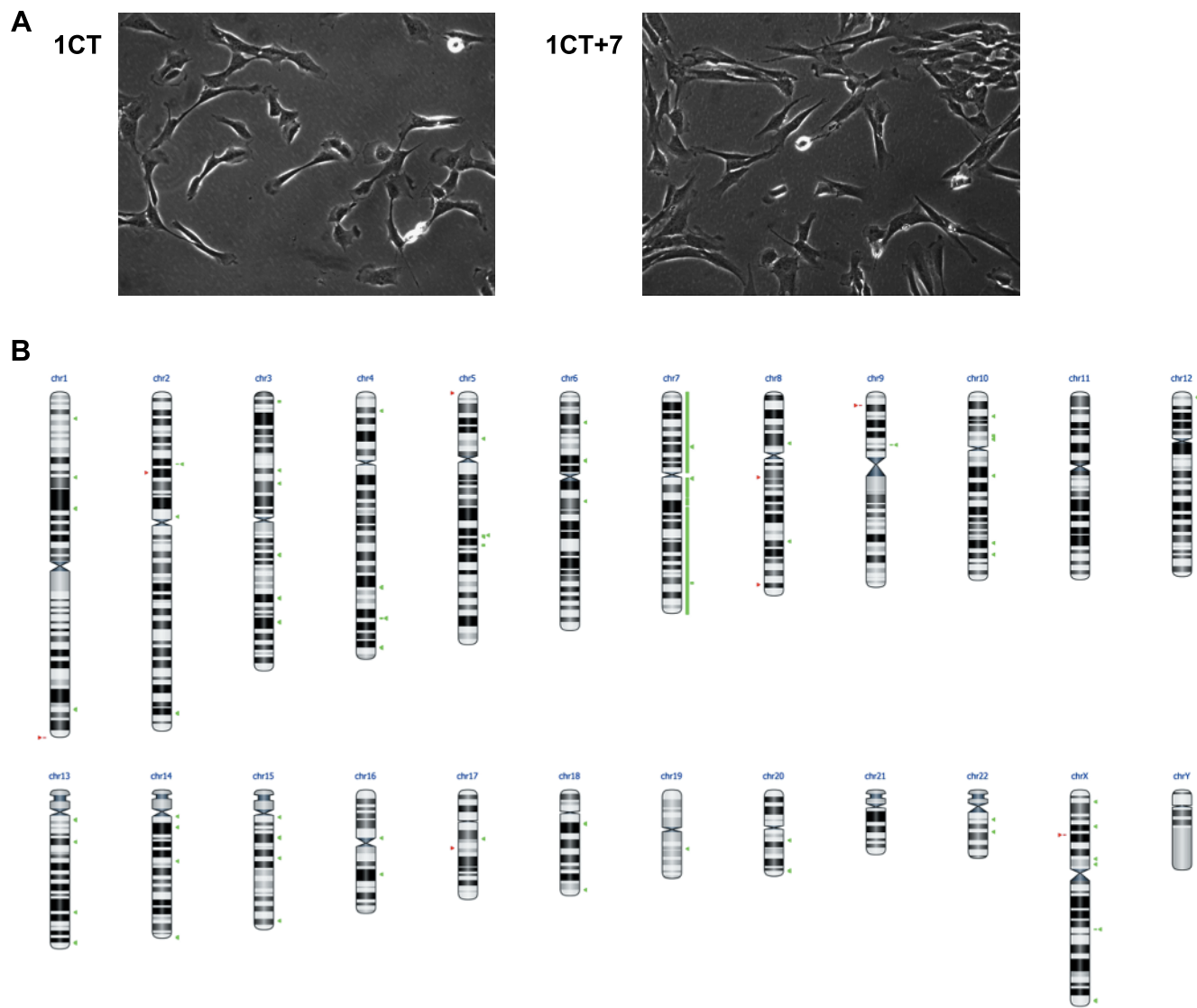


Figure W1. (A) Phase-contrast images of cell morphology for both cell types. (B) Array Comparative Genomics Hybridization analysis reveals no other large gains or losses of chromosomal segments other than amplification of chromosome 7 in HCEC 1CT+7.

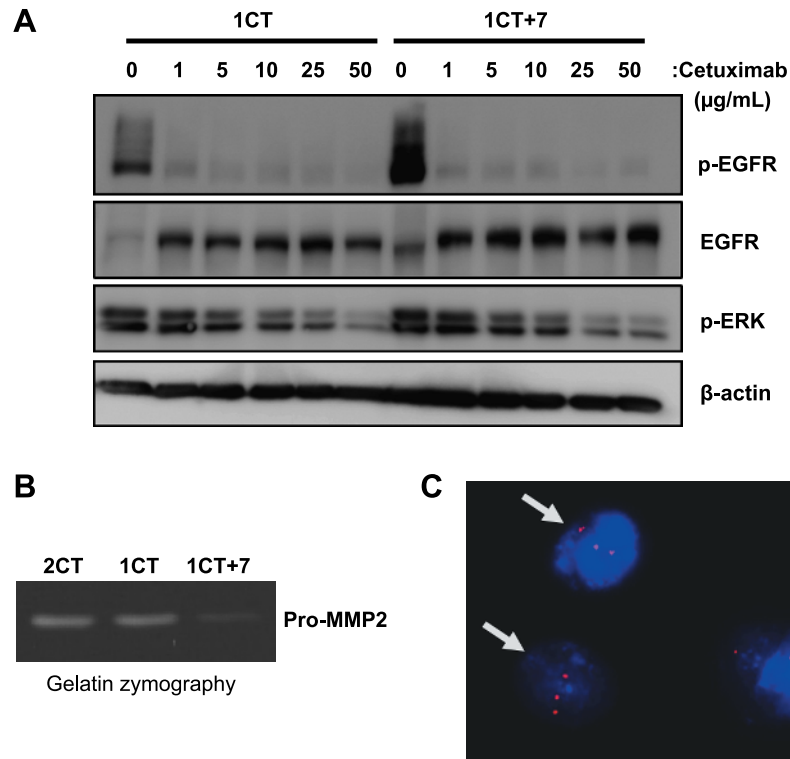


Figure W2. (A) Cetuximab can effectively inhibit EGFR phosphorylation in both 1CT and 1CT+7 cells. Cells were treated with varying concentrations of cetuximab for 1 hour before stimulation with 5 ng/ml EGF for 15 minutes. (B) Gelatin zymography detects lower pro-MMP-2 levels secreted by HCEC 1CT+7 than in HCEC 1CT or 2CT. (C) FISH analysis using chromosome 20-specific probes shows 20% (7/35 cells by GTG banding) trisomy 20 emergence from HCEC 1CTRP+7 populations.

Table W2. List of Polymerase Chain Reaction Primers Used for DNA Sequencing.

Sequenced Region	Direction	Primer Sequence (5'-3')
APC-Cluster 1	Reverse	GCTGGATTGGTTCTAGGG
	Forward	TCCTTCATCACAGAAACAGT
APC-Cluster 2	Reverse	GATGACTTTGTTGGCATGGCA
	Forward	GGTCAGCTGAAGATCCTGTG
EGFR-TK Domain	Reverse	GCCCTGCTGTGGGATGAGGTACTC
	Forward	GGAGAAGCTCCCAACCAAGCTCTCTTG
KRAS-Ex1	Reverse	GAATGGTCCTGCACCAGTAA
	Forward	GTGTGACATGTTCTAATATAGTCACA
p53-Ex5	Reverse	CCAGCCCTGTCGTCTCTCCA
	Forward	GCTGCCGTGTTCCAGTTGC
p53-Ex6	Reverse	GCCACTGACAACCACCTTA
	Forward	GGCCTCTGATTCTCTACTCTGA
p53-Ex7	Reverse	AGTGTGCAGGGTGCAAGTG
	Forward	TGCCACAGGTCTCCCAAGG
p53-Ex8	Reverse	ATAACTGCACCCTTGGTCTC
	Forward	CCTTACTGCCTCTTGCTTCT

Regions sequenced here were all normal in the HCEC 1CT line.