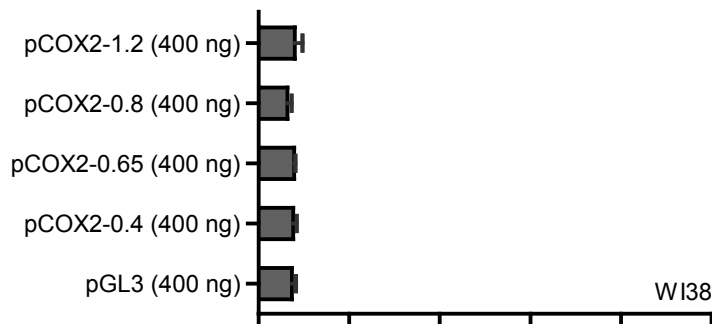
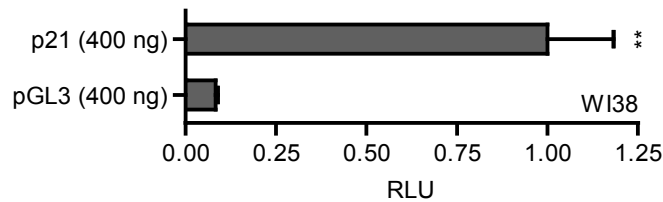


A



B



Supplemental Fig. S3. Basal promoter activity of pCOX2-deletion constructs examined in WI38 cells. WI38 cells were transiently transfected with 400 ng pCOX2-deletion constructs (*A*) or a construct containing the p21 promoter as a control (*B*) and basal promoter activity was determined. In all experiments 1 ng of PRL-SV40 Renilla was transfected as an internal control. Promoter activity was normalized as the ratio between firefly luciferase and Renilla luciferase units. RLU: Relative Luciferase Units. Each figure corresponds to at least three independent experiments. Statistical significance was determined through ANOVA test (* $p < 0.05$, ** $p < 0.01$).