

Table 1: All gene fusions nominated by discordant read pairs in the simulated data.

Upstream Partner	Downstream Partner
FOXO3B	EIF3C
FOXO3B	EIF3CL
FOXO3	EIF3C
FOXO3	EIF3CL
FRG1B	LOC162632
FRG1B	LOC220594
FRG1B	USP32
FRG1B	USP6
FRG1	LOC162632
FRG1	LOC220594
FRG1	USP32
FRG1	USP6
LOC283788	LOC162632
LOC283788	LOC220594
LOC283788	USP32
LOC283788	USP6
LOC642236	LOC162632
LOC642236	LOC220594
LOC642236	USP32
LOC642236	USP6
MAGED4B	MBD3L2
MAGED4B	MBD3L3
MAGED4B	MBD3L4
MAGED4B	MBD3L5
MAGED4	MBD3L2
MAGED4	MBD3L3
MAGED4	MBD3L4
MAGED4	MBD3L5
PSG10	PHB
PSG10	ZNF607
PSG11	PHB
PSG11	ZNF607
PSG1	PHB
PSG1	ZNF607
PSG2	PHB
PSG2	ZNF607
PSG3	PHB
PSG3	ZNF607
PSG4	PHB
PSG4	ZNF607
PSG5	PHB
PSG5	ZNF607
PSG6	PHB
PSG6	ZNF607
PSG7	PHB
PSG7	ZNF607
PSG8	PHB
PSG8	ZNF607
PSG9	PHB
PSG9	ZNF607
SMN1	CSAG1
SMN1	CSAG2
SMN1	CSAG3
SMN2	CSAG1
SMN2	CSAG2
SMN2	CSAG3

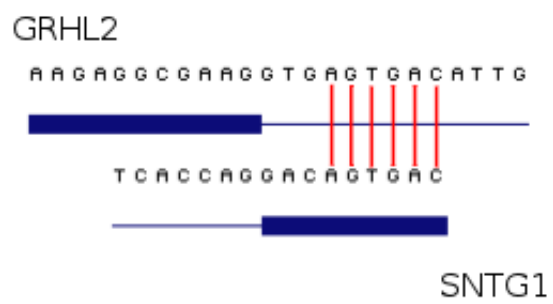


Figure 1: A short homologous sequence near the fusion site of GRHL2 and SNTG1.