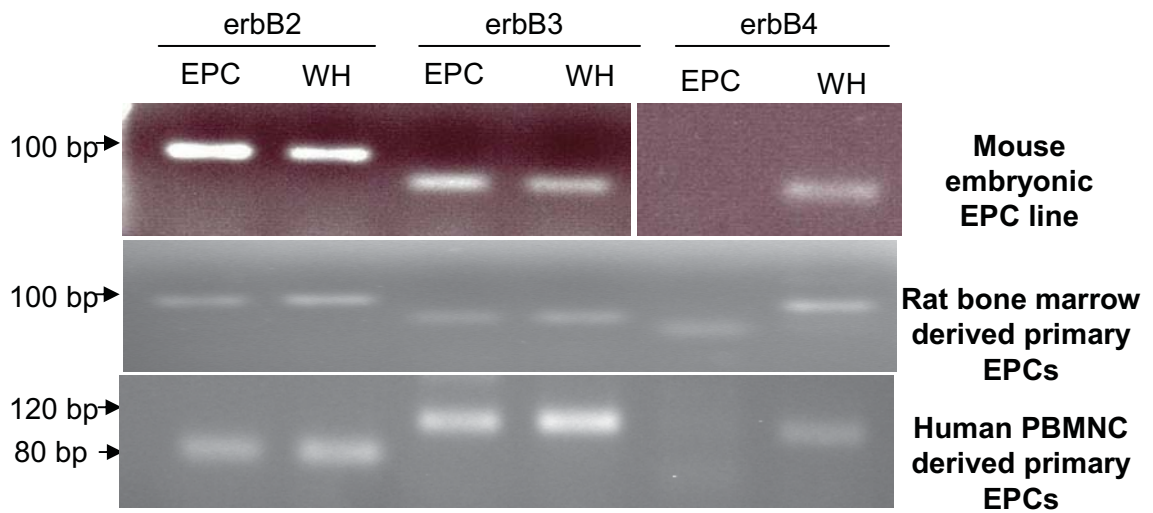
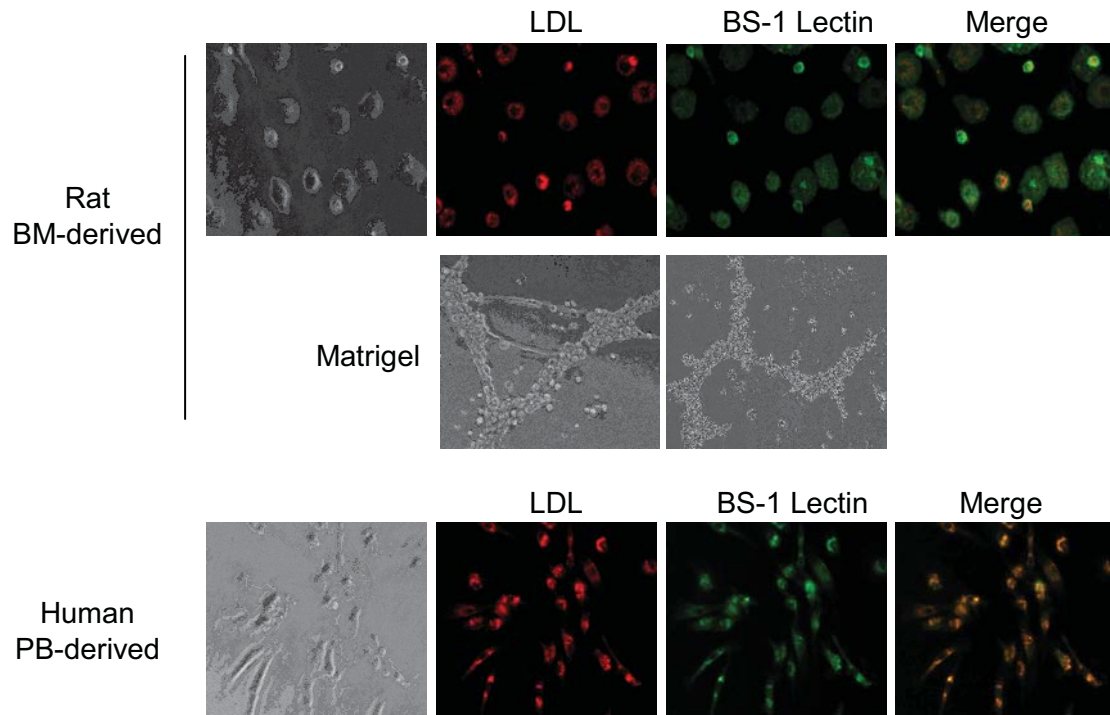


# Supplemental Fig 1



## Supplemental Figure 1: Identification of Primary EPCs.

(A) Rat bone marrow and human peripheral blood derived EPCs were isolated and identified by LDL uptake and BS-1 lectin staining. Rat BM derived EPCs formed tube structures when plated in matrigel. (B) RT-PCR analysis of erbB receptor expression in various EPC populations demonstrated an identical erbB receptor expression pattern (WH = whole heart). erbB4 products amplified from mouse cDNA were resolved on a separate gel.