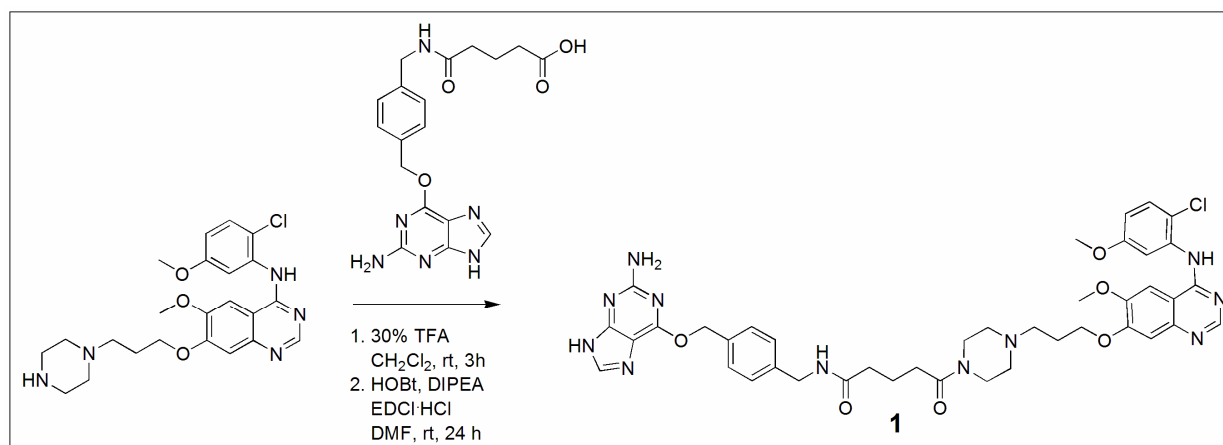


Supplementary Information



Scheme S1. Compound 1

Supplementary Video 1. Time-lapse video of a Ba/F3 cell taken 35 minutes after photolysis and for a duration of 5 hours and 25 minutes. Four nanocapsules were photolyzed in this cell.

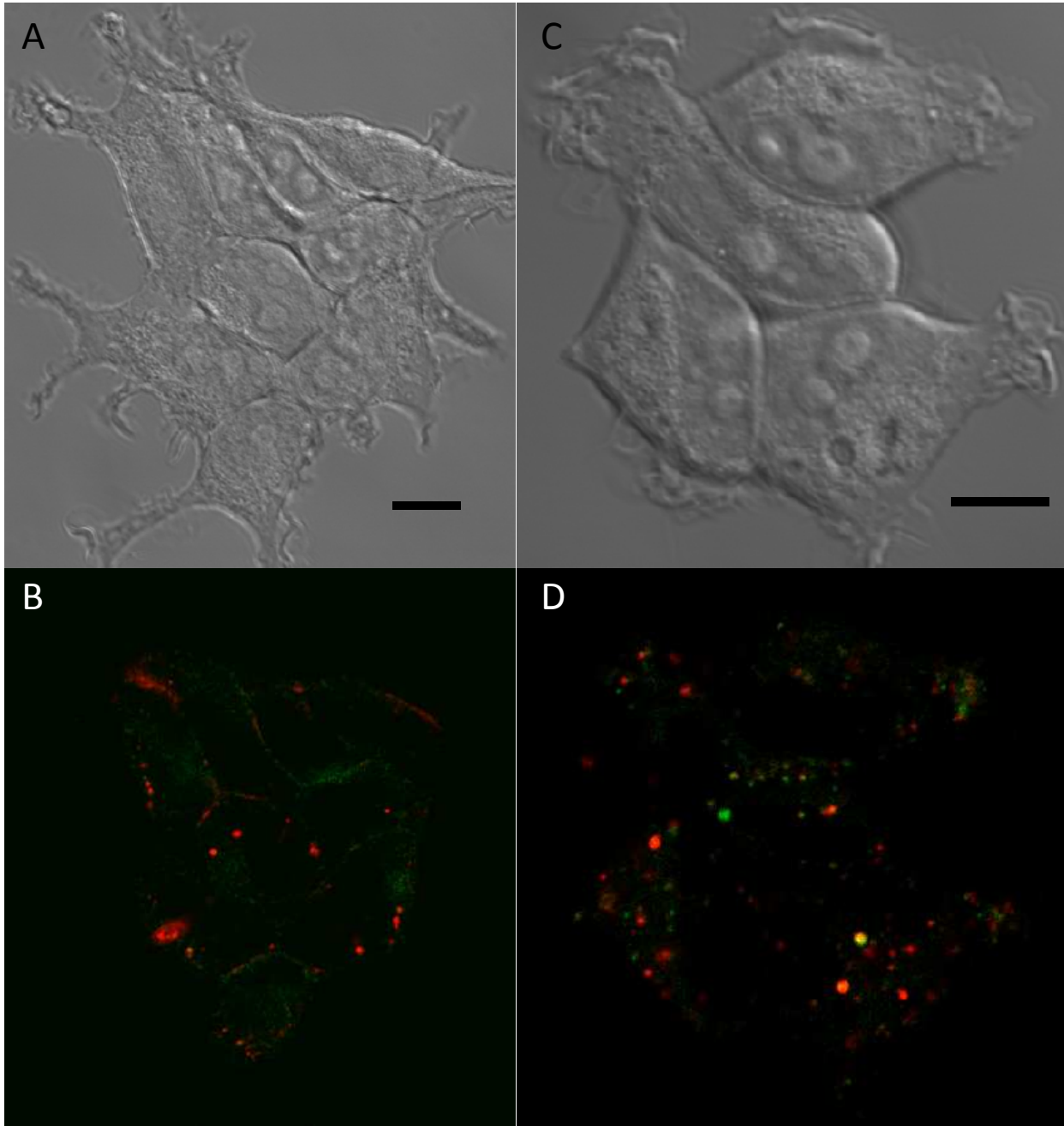


Figure S1. Receptor mediated and fluid phase endocytosis markers with loaded lipid nanocapsules. (A-B) Bright field and slice from confocal image of HEK 293 cells loaded with 100nm diameter lipid nanocapsules and transferrin receptors labeled with Transferrin-Alexa488. Imaged immediately after incubation and washing steps. (C-D) Bright field and slice from confocal image of HEK 293 cells loaded with 100nm diameter lipid nanocapsules and pHrodo Dextran to image fluid phase endosomes. Images taken 2 hours after incubation and washing steps (3 hours total loading time). Scale bars are 10 μ m.