

**A**

Pep4: TVLPLHLVHHQALAVAGLSPLLQR  
 Pep5: LSPLLQRSHSPTSLPRPCATPP  
 Pep6: TVLPLHLVHH  
 Pep7: VHHQALAVAG  
 Pep8: VAGLSPLLQR  
 Pep9: LQRSHSPTSL  
 Pep10: TSLPRPCATPP

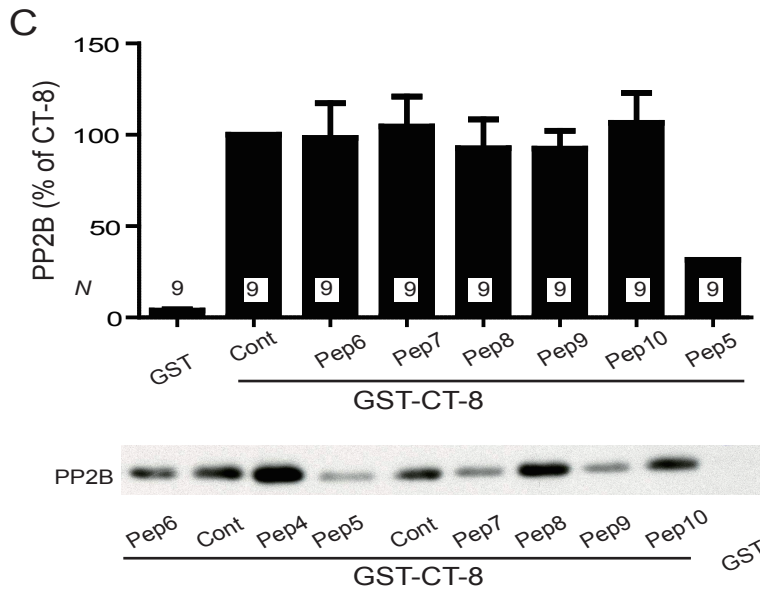
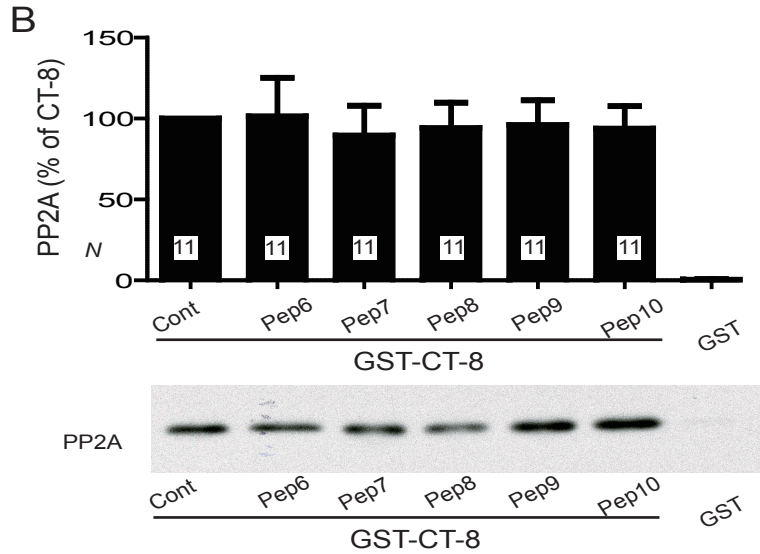


Figure S1: Shorter peptides covering Peptide 4 and 5 have no significant effect on PP2A and PP2B binding to GST-CT-8. (A) Tabulation of the sequences for original Peptide 4 and 5 and 10 mer Peptides 6-10 covering this region. (B,C) Pull down of PP2A (B) and PP2B (C) by GST-CT-8 as detected by immunoblotting with anti-PP2A/C and (B) and anti-PP2B (C). Graphed are means+SEM from N samples in 6 (B) and 5 (C) independent experiments with the indicated peptides (20  $\mu$ M) present during PP2A and PP2B binding to GST-CT-8. Representative immunoblots are shown below. GST served as negative control and GST-CT-8 without any peptide as positive control (Cont).