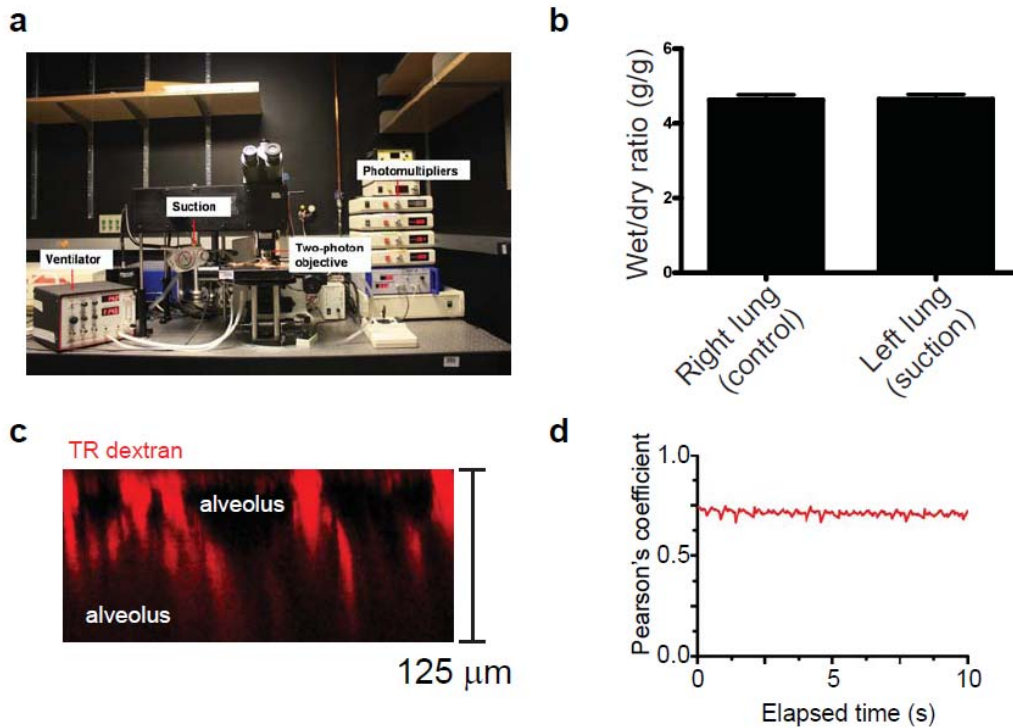


Supplementary Figure 1. Imaging set-up, lung edema measurements, z-depth imaging, and image stability.



Supplementary Figure 1. Imaging set-up, lung edema measurements, z-depth imaging, and image stability. (a) Imaging set-up with mechanical ventilator, suction manipulator, and two-photon excitation and detection systems. (b) Lung wet-to-dry weight ratio (g/g) in the right and left lungs of mice ($n = 4$) under continuous anesthesia, mechanical ventilation, and thoracic suction (left lung). (c) x-z rendering of a lung vasculature filled with Texas Red dextran and imaged to a depth of $125 \mu\text{m}$. (d) Pearson's coefficient of a timelapse after removal of four frames out of fifteen, which represent ventilation.