

Supporting Information

Oberle and Schaal 10.1073/pnas.1012302108

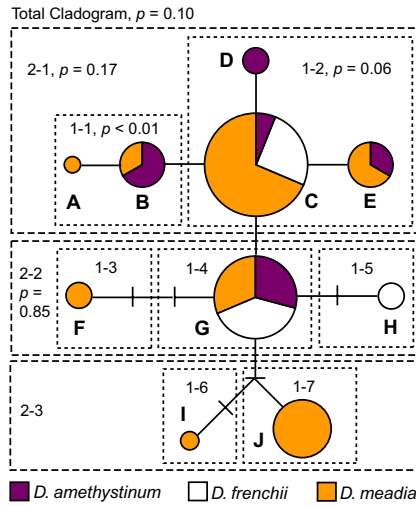


Fig. S1. Nested haplotype network representing inferred relationships among *psbA-trnH*^{GUG} sequences from all samples. Circle size is proportional to abundance of each haplotype. Lines connecting haplotypes represent inferred mutational differences. Hatches across connecting lines represent unobserved haplotypes. *P* values refer to the significance of the association between haplotype (or haplotype clade) and taxonomic determination (additional methods in text).

Table S1. Summary of material analyzed

No.	Taxon	Locality	Habitat	Latitude	Longitude	SLA	cpDNA	No. of AFLPs
292	<i>D. meadia</i>	Oconee N.F., Green Co., GA	Forest	33.596	-83.263	289.87	G	10
294	<i>D. frenchii</i>	Cane Creek Canyon, Colbert Co., AL	Cliff	34.640	-87.808	657.07	G	8
295	<i>D. meadia</i>	Kitsatchie N.F., Natchitoches Pa., LA	Forest	31.419	-93.053	447.23	C	9
297	<i>D. meadia</i>	Pontotoc Ridge N.P., Pontotoc Co., OK	Open	34.522	-96.609	198.10	D	10
298	<i>D. meadia</i>	Beaver's Bend S.R.P. McCurtain Co. OK	Forest	34.137	-94.696	431.65	F	9
299	<i>D. meadia</i>	Middle Fork Barrens N.P., Saline Co., AR	Forest	34.640	-92.840	335.46	C	10
300	<i>D. frenchii</i>	Ozark N.F. Newton Co., AR	Cliff	35.847	-93.294	399.11	C	10
301	<i>D. meadia</i>	Duck River Complex N.A., Maury Co., TN	Open	35.567	-86.888	188.64	G	10
302	<i>D. meadia</i>	Pisgah N.F., Buncombe Co., NC	Forest	35.661	-82.432	242.14	C	9
304	<i>D. meadia</i>	Standing Stone S.P., Overton Co., TN	Forest	36.470	-85.415	220.51	C	10
305	<i>D. frenchii</i>	Stones Creek Hollow, Grayson Co., KY	Cliff	37.532	-86.407	309.31	G	9
306	<i>D. meadia</i>	Logan Co. Glades S.N.P., Logan Co., KY	Open	36.847	-86.874	184.42	I	10
307	<i>D. meadia</i>	Ferne Clyffe S.P., Johnson Co., IL	Forest	37.532	-88.989	229.88	C	10
308	<i>D. meadia</i>	Portland Arch N.P., Fountain Co., IN	Forest	40.211	-87.332	228.27	I	8
310	<i>D. frenchii</i>	Carter Caves S.R.P., Carter Co., KY	Cliff	38.368	-83.121	489.30	C	8
311	<i>D. meadia</i>	FloraCliff N.P., Fayette Co., KY	Cliff	37.905	-84.364	287.06	C	10
312	<i>D. frenchii</i>	Hoosier N.F., Perry Co., IN	Cliff	38.199	-86.568	524.43	H	10
313	<i>D. meadia</i>	Shawnee N.F., Gallatin Co., IL	Open	37.604	-88.282	227.11	I	9
314	<i>D. frenchii</i>	Shawnee N.F., Jackson Co. IL	Cliff	37.515	-88.543	465.10	C	9
315	<i>D. frenchii</i>	Shawnee N.F., Pope Co. IL	Cliff	37.668	-89.363	531.70	G	9
316	<i>D. meadia</i>	Perry Co., MO	Cliff	37.708	-89.583	319.02	C	10
317	<i>D. frenchii</i>	Hickory Canyons, Ste. Genevieve Co., MO	Cliff	37.870	-90.307	394.37	G	10
318	<i>D. meadia</i>	St. Louis Co., MO	Forest	38.559	-90.626	250.24	C	8
332	<i>D. amethystinum</i>	Clark's Hill Norton S.H.S. Osage Co., MO	Cliff	38.561	-92.026	323.13	G	10
334	<i>D. meadia</i>	Taberville Prairie S.N.A. St. Clair Co., MO	Open	38.050	-93.993	185.53	C, G	10
335	<i>D. frenchii</i>	Mark Twain N.F., Douglas Co., MO	Cliff	36.992	-92.094	397.67	C	9
336	<i>D. meadia</i>	Mark Twain N.F., Taney Co., MO	Open	36.731	-92.848	185.83	G, J	10
337	<i>D. meadia</i>	Naked Mountain N.P., Nelson Co., VA	Open	37.749	-78.833	235.68	C, A	10
338	<i>D. meadia</i>	Franklin Co., PA	Forest	39.727	-78.062	323.13	B	10
339	<i>D. amethystinum</i>	Lancaster Central Park, Lancaster Co., PA	Cliff	40.021	-76.285	405.52	B	10
340	<i>D. amethystinum</i>	Columbia Co., PA	Cliff	40.949	-76.483	344.35	B	10
341	<i>D. amethystinum</i>	Ray Norbut S.F.W.A., Pike Co., IL	Cliff	39.662	-90.642	252.31	G	10
343	<i>D. meadia</i>	Freeport Prairie N.P., Stephenson Co., IL	Open	42.277	-89.622	151.01	C	10
346	<i>D. amethystinum</i>	Mississippi Palisades S.P., Carroll Co., IL	Cliff	42.129	-90.158	275.49	G	10
348	<i>D. amethystinum</i>	Grant Co., WI	Cliff	42.852	-91.072	318.27	D	9
349	<i>D. meadia</i>	Hogback Prairies S.N.A., Crawford Co., WI	Open	43.213	-90.870	144.08	D	10
350	<i>D. amethystinum</i>	North Bear W.M.A., Winneshiek Co., IA	Cliff	43.447	-91.622	395.58	C	10
351	<i>D. amethystinum</i>	Perrot S.P., Trempleau Co., WI	Cliff	44.016	-91.480	256.90	E	10
352	<i>D. meadia</i>	Hayden Prairie S.N.P., Howard Co., IA	Open	43.438	-92.386	147.11	I	8
353	<i>D. meadia</i>	Cedar Co., IA	Open	41.665	-91.140	282.82	I	10

Collection numbers refer to the first author. cpDNA refers to *psbA-trnH*^{GUG} haplotypes present in the populations as labeled in Fig. S1. Haplotypes A–J were deposited in the GenBank database under accession nos. HM778141–HM778150.