

Online Supplemental Material

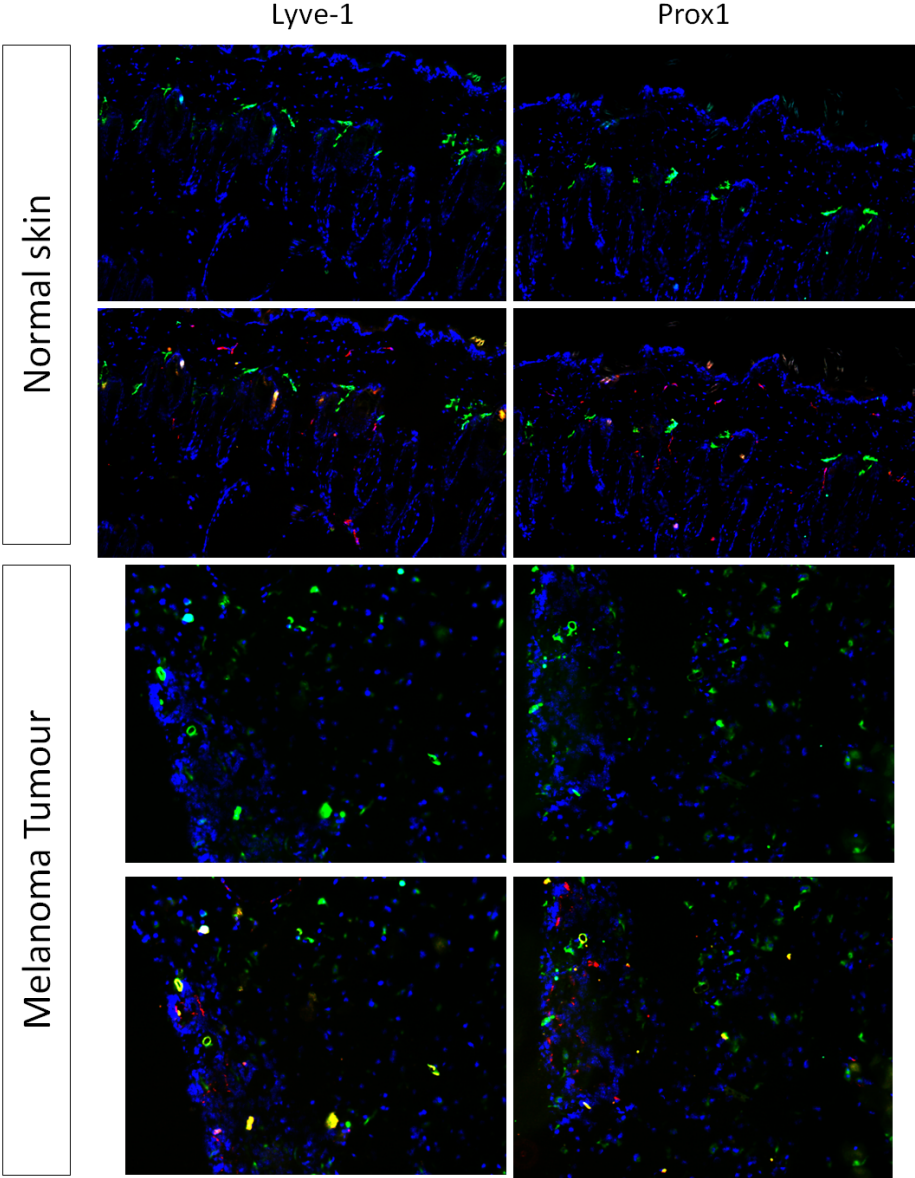


Figure S1 : Lyve 1 and Prox1 have similar staining patterns in Normal skin and melanoma tumours. Serial sections of normal skin (upper panels) or melanoma tumours (lower tumours) were stained using Lyve1 or Prox1 in combination with CD31. Staining pattern of single stained and double stained lymphatic vessels is similar.