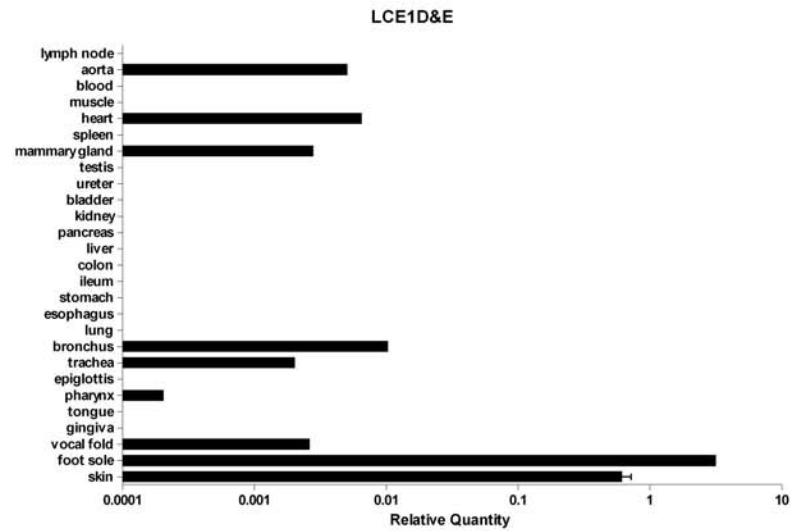
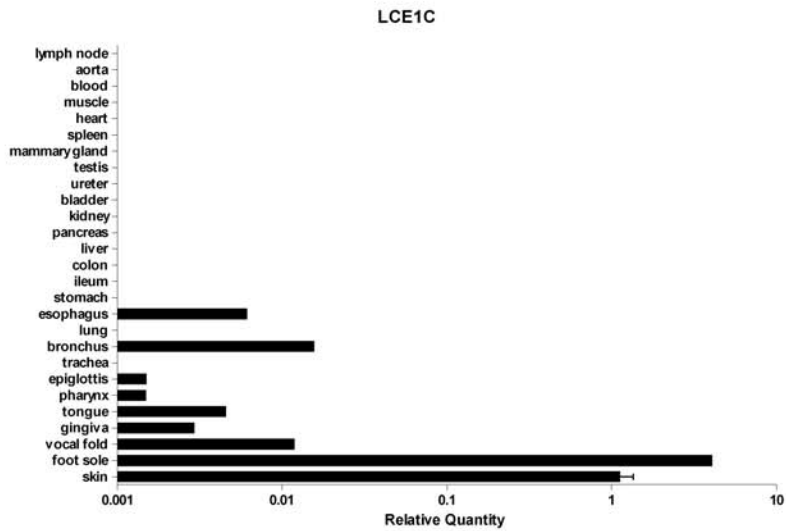
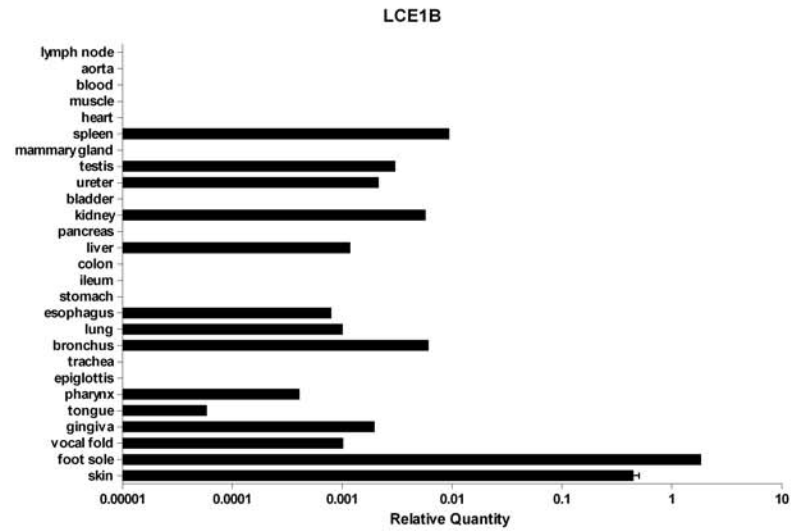
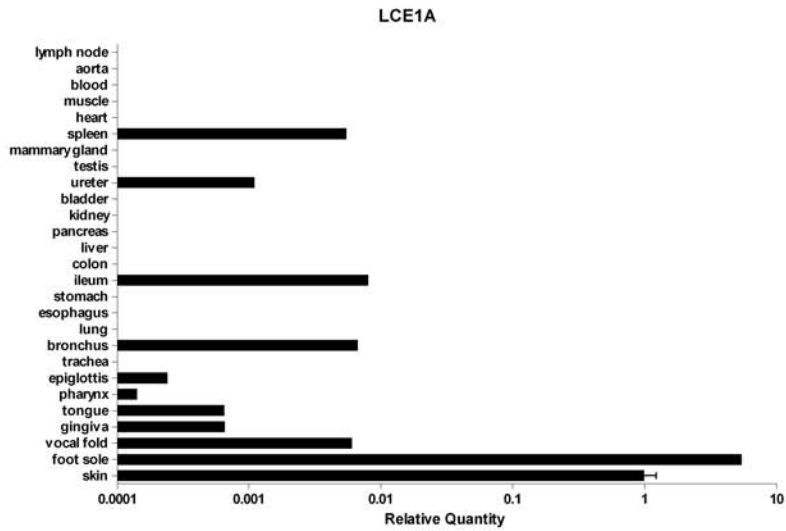
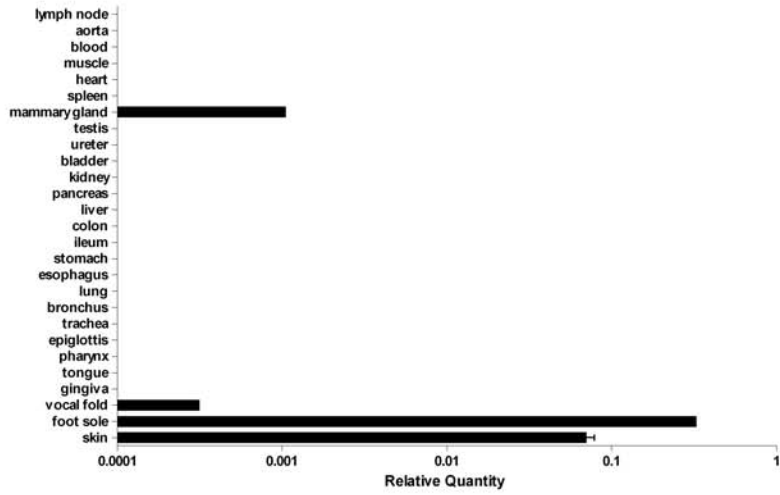


Supplemental Figure 2. Relative mRNA expression levels of *LCE* genes in normal human tissues

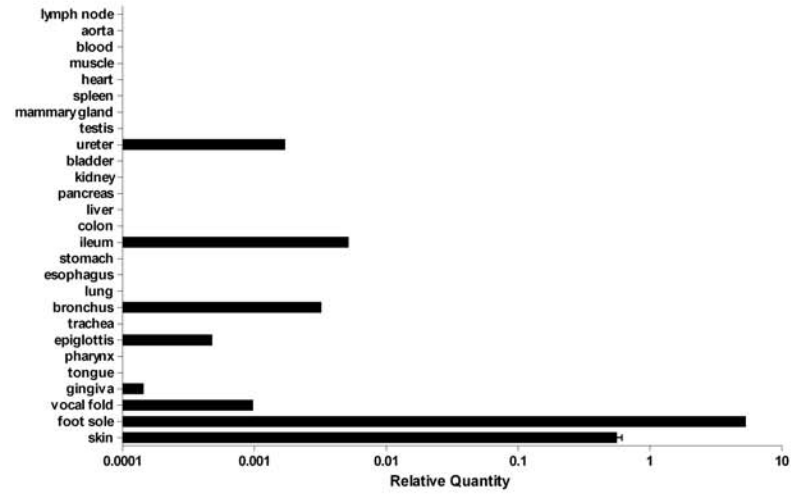
Expression of target genes was normalized to that of *RPLP0*. For graphical representation, all values were expressed relative to *LCE1A* in skin, which was set at unity, to allow comparison of the expression levels between tissues and genes (Livak and Schmittgen, 2001). For primer sequences and efficiency of amplification see Table 1. Normal human tissues are from one individual. Skin data is obtained from 12 normal skin biopsies (mean and SD).



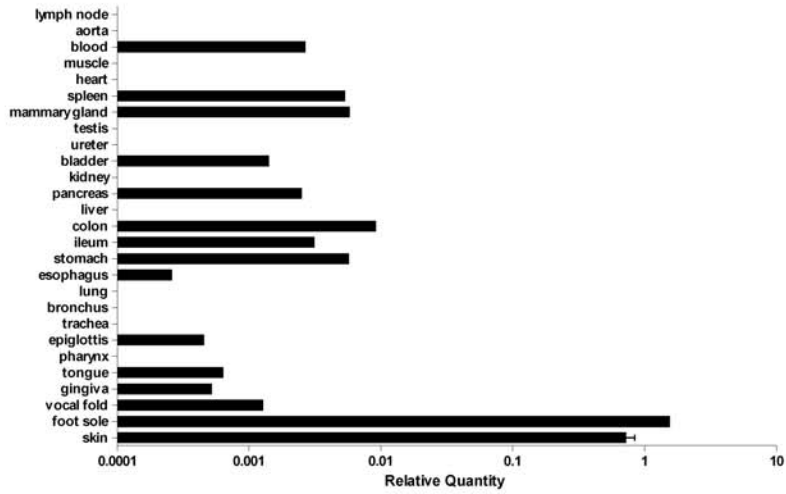
LCE1F



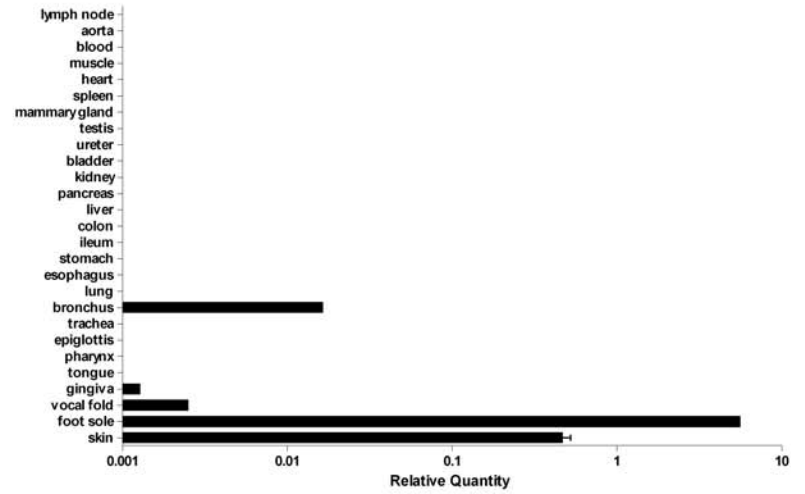
LCE2A



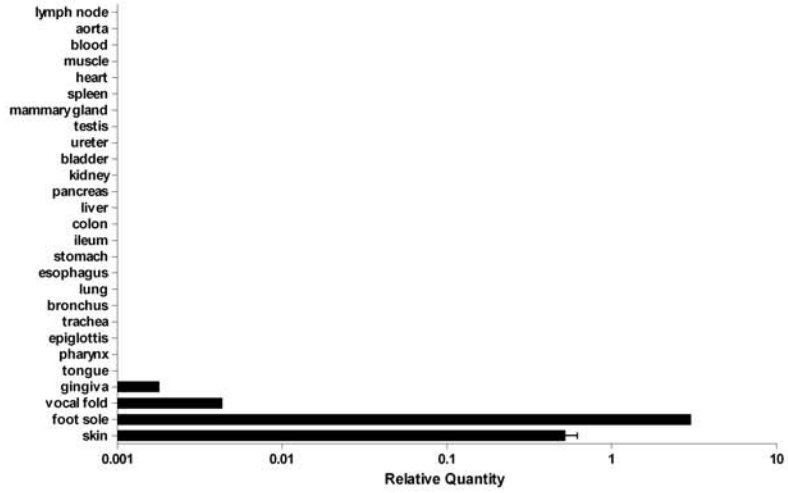
LCE2B



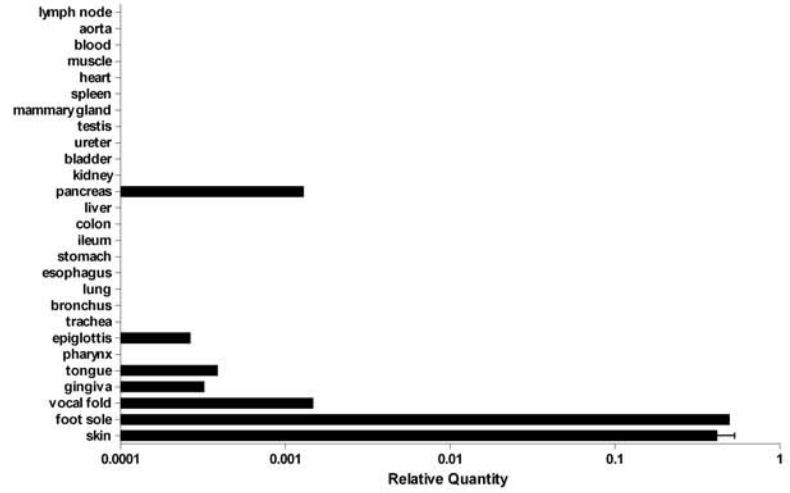
LCE2C



LCE2D



LCE5A



LCE6A

