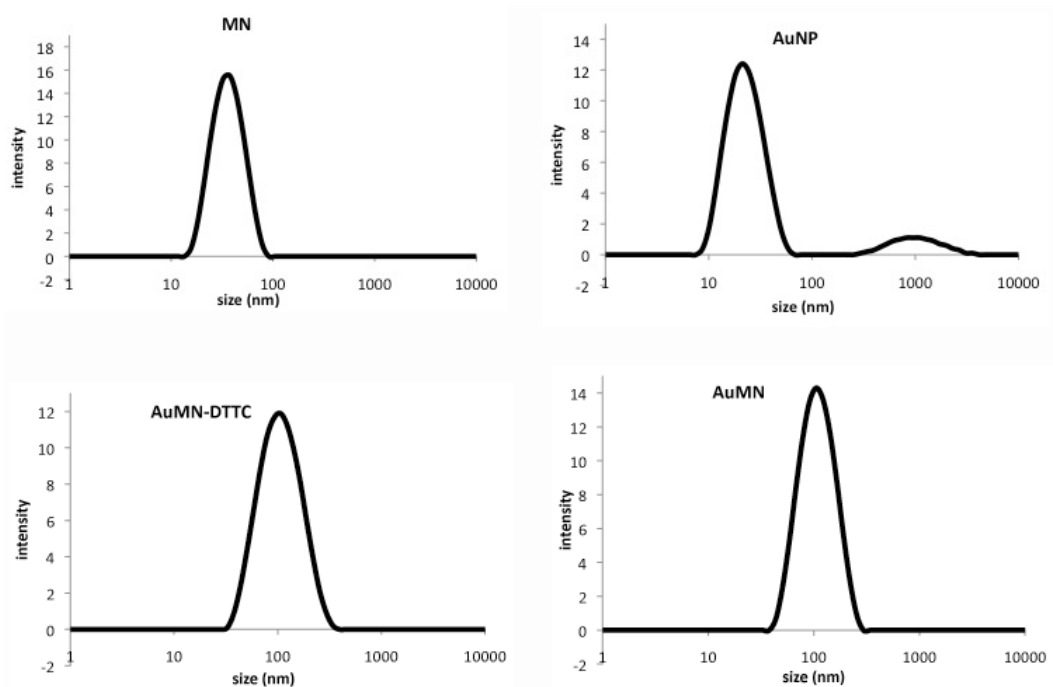
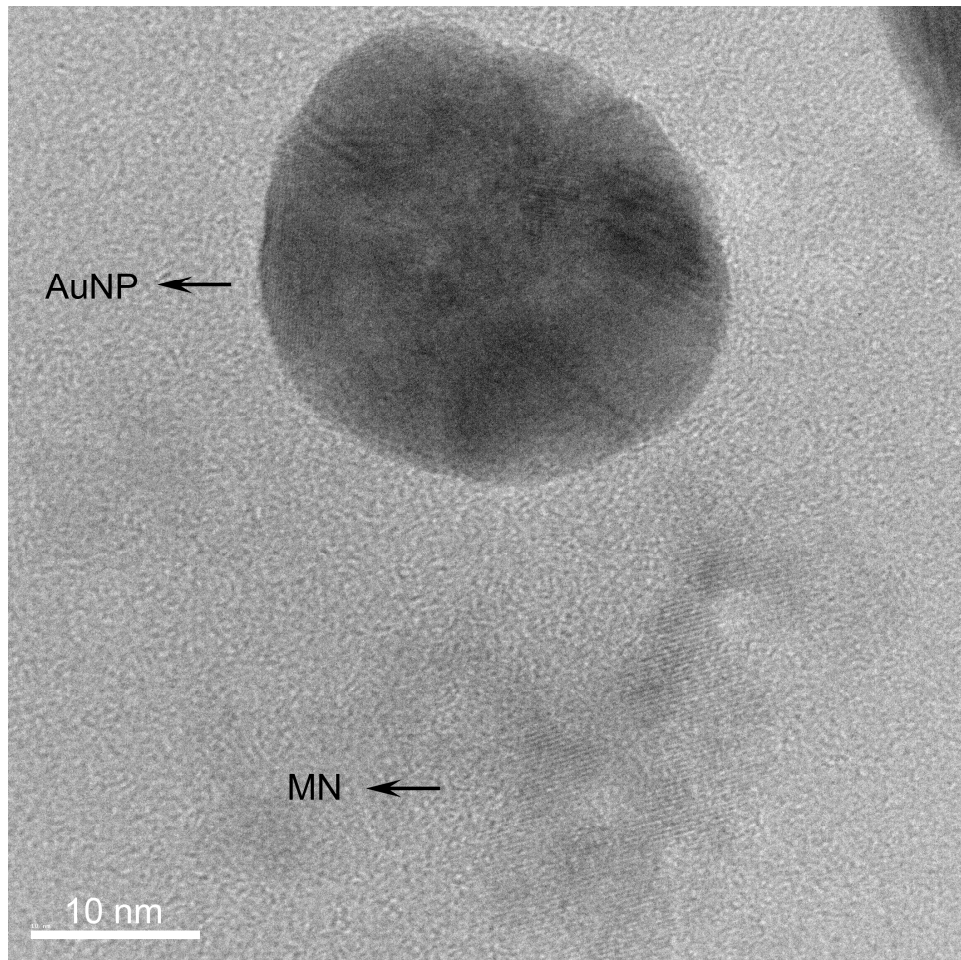


Supporting Information

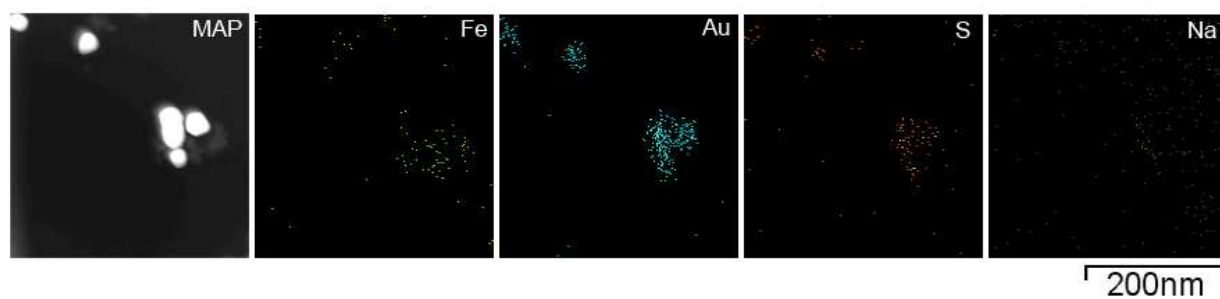
**Noninvasive MRI-SERS imaging in living mice using an innately bimodal
nanomaterial**



Supplemental Figure 1: Z-Average diameter of nanoparticles measured by dynamic light scattering. The particle size histograms of MN, AuNP, AuMN-DTTC and AuMN demonstrate that the final preparations were monodisperse.



Supplemental Figure 2: HRTEM images show that the metallic lattices of AuNP and dextran coated MN are located close to each other. Scale bar, 10 nm.



Supplemental Figure 3: Elemental map of AuMN-DTTC using STEM/EDS system. The Fe/Au/S elemental map co-localizes with the AuMN-DTTC map, as predicted. The sodium map demonstrates that the Fe/Au/S elemental co-localization is unique to AuMN-DTTC, since it is not observed with respect to sodium.