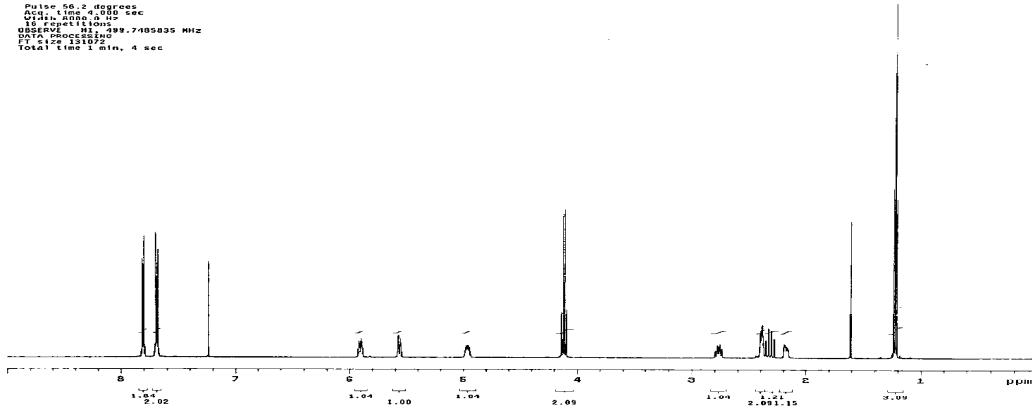


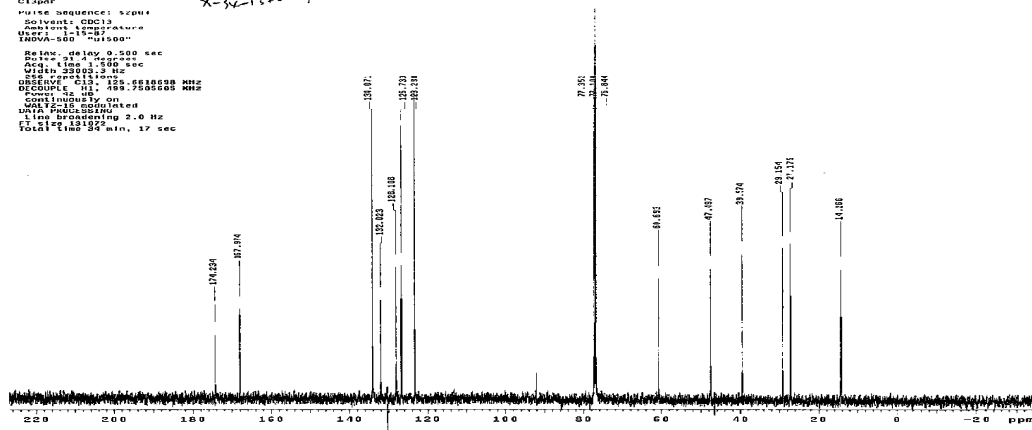
13

STANDARD PROTON PARAMETERS
 Pulse sequence: zgpg30
 Solvent: CDCl3
 INOVA-500 "outseq"
 Pulse: 56.2 degrees
 Relax: 4.000 sec
 Acq. time: 3.500 sec
 10 F1: 100.625 MHz
 OBSERVE: H1 500.136288 MHz
 F2: 100.625 MHz
 Total time: 1 min, 4 sec

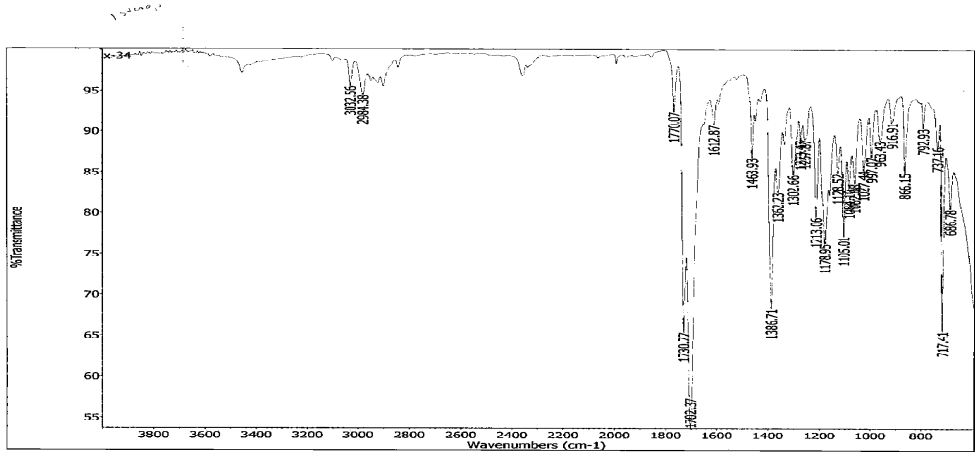


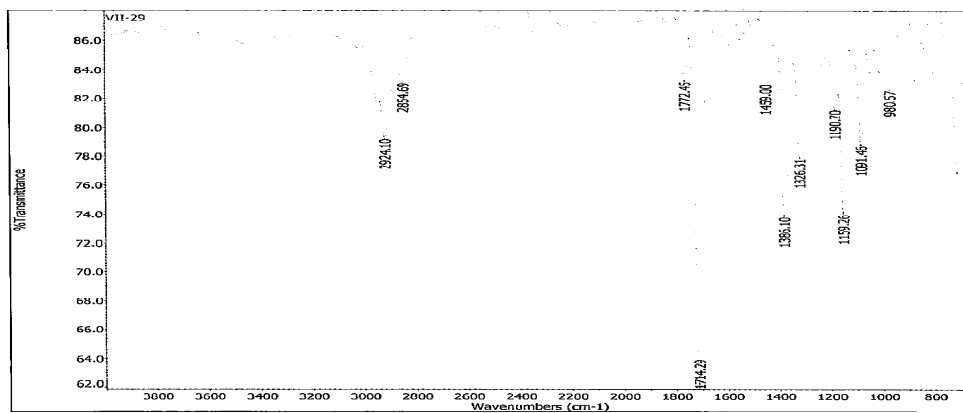
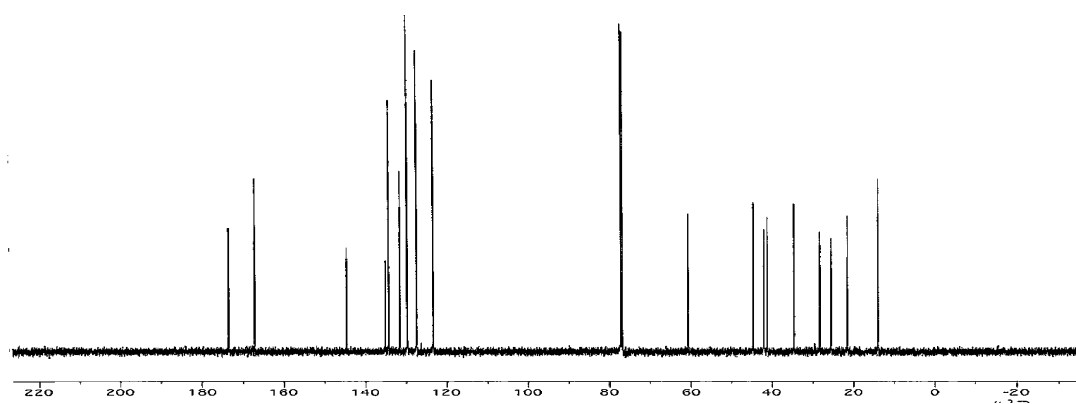
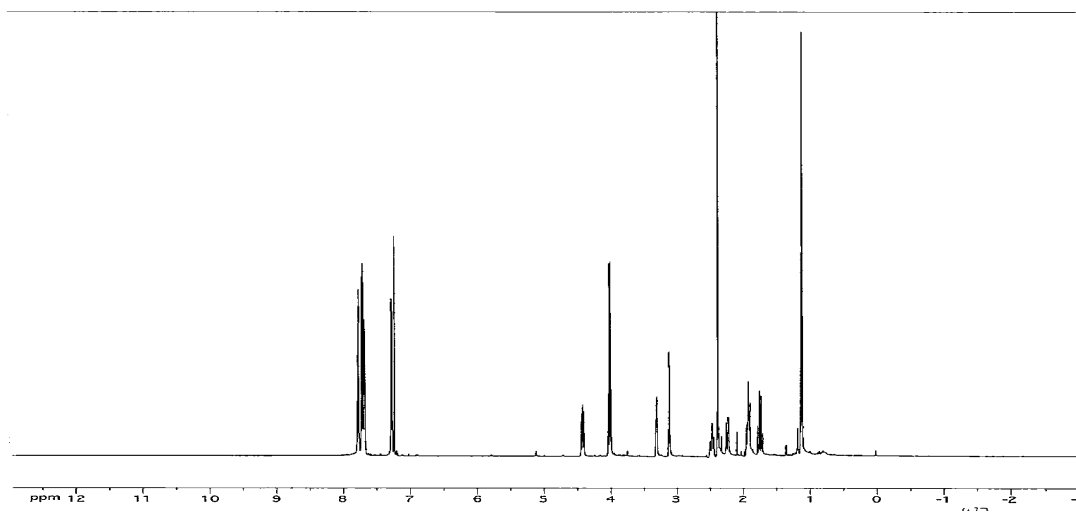
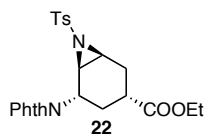
4.22

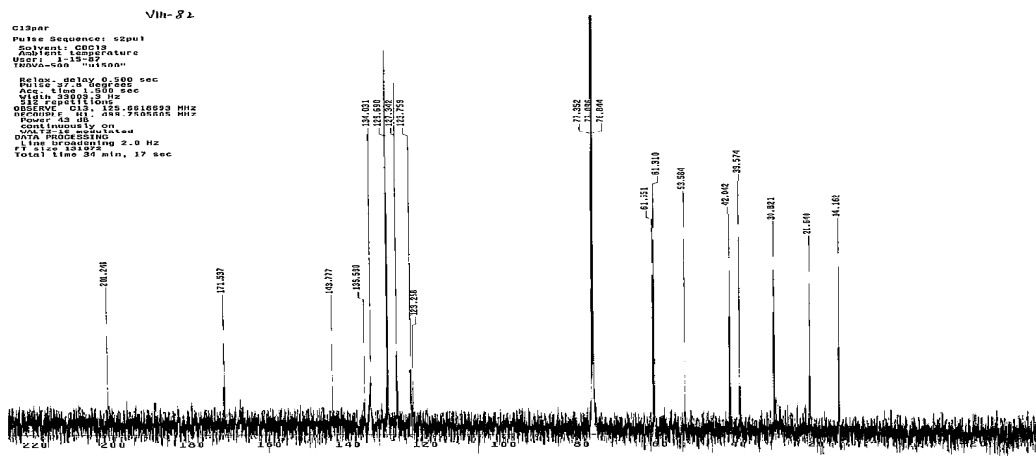
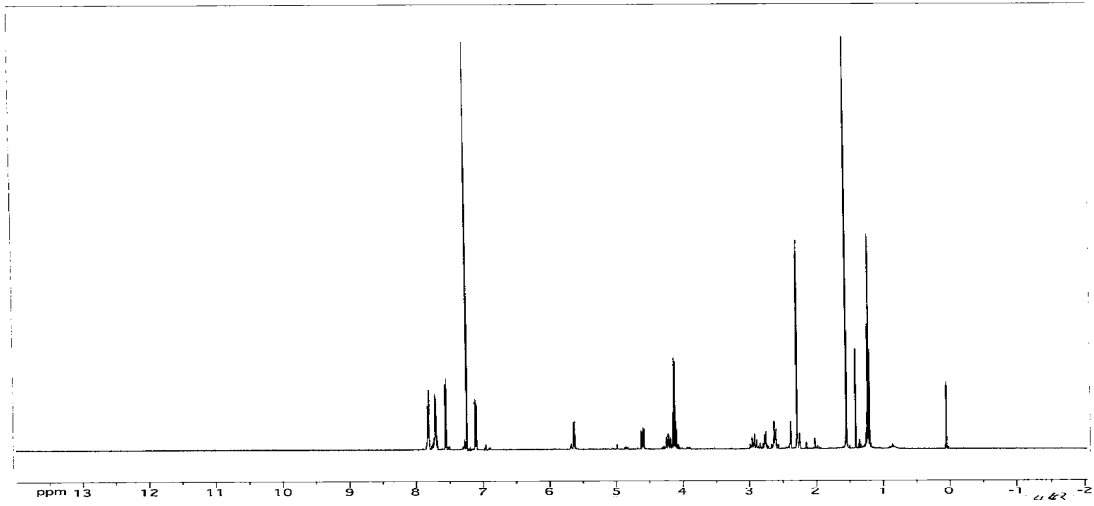
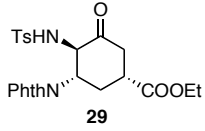
Cl3ppr
 Pulse sequence: zgpg30
 Solvent: CDCl3
 Relax: 4.000 sec
 INOVA-500 "outseq"
 Relax: delay 0.500 sec
 Pulse: 56.2 degrees
 Acq. time: 3.500 sec
 10 F1: 100.625 MHz
 OBSERVE: H1 500.136288 MHz
 F2: 100.625 MHz
 CONTINUOUSLY ON
 MULTISCAN: 10
 MVA PROCESSING
 Line: 100.625 MHz
 Total time: 54 min, 17 sec



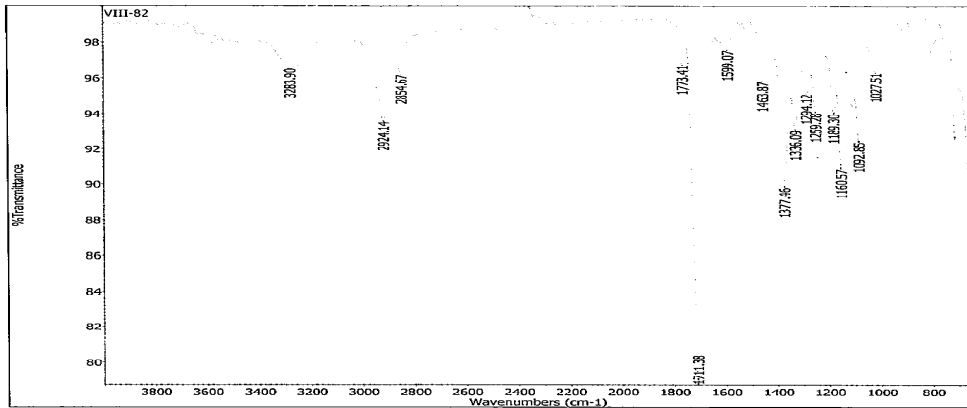
4.22



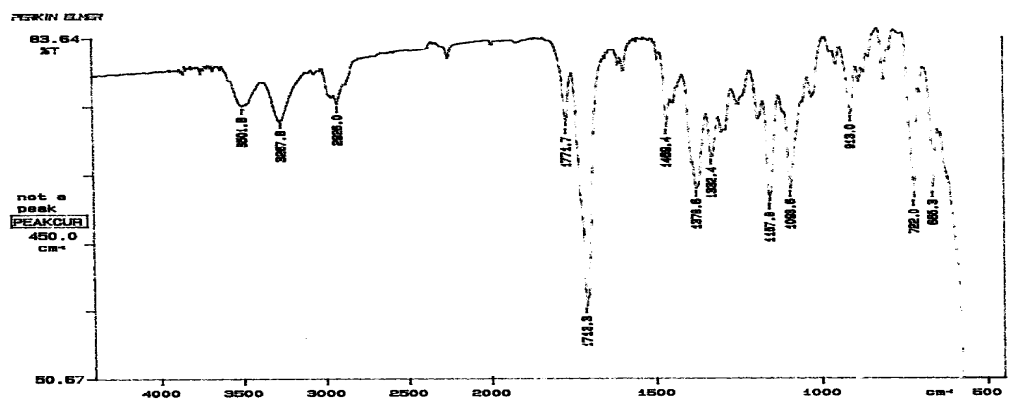
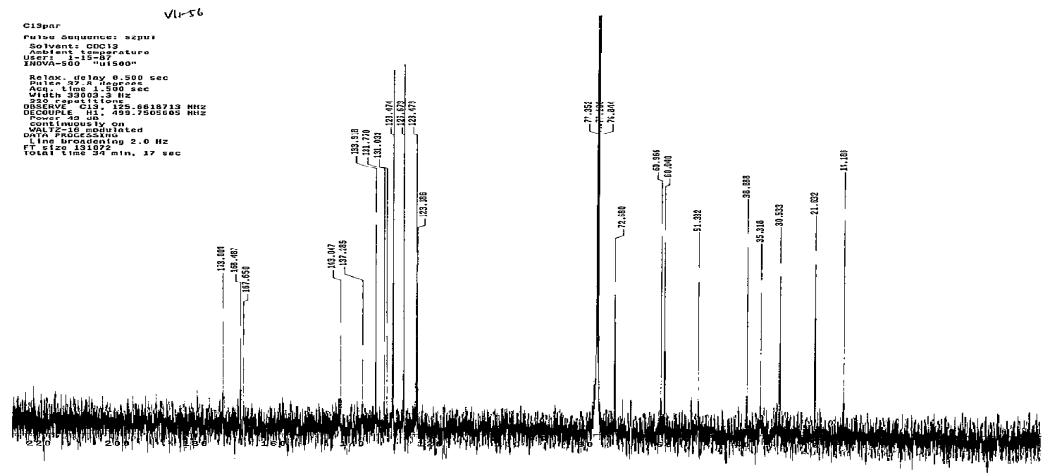
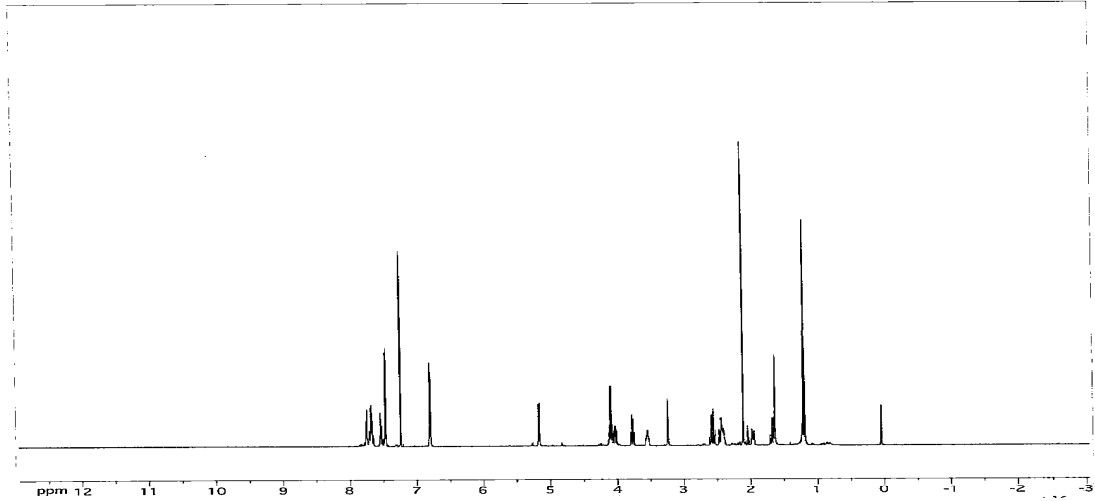
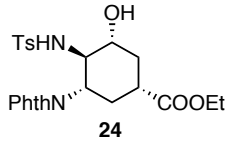




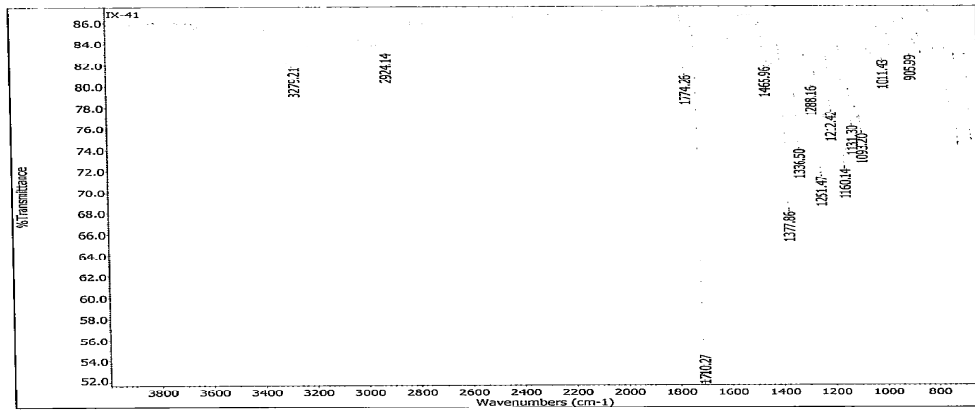
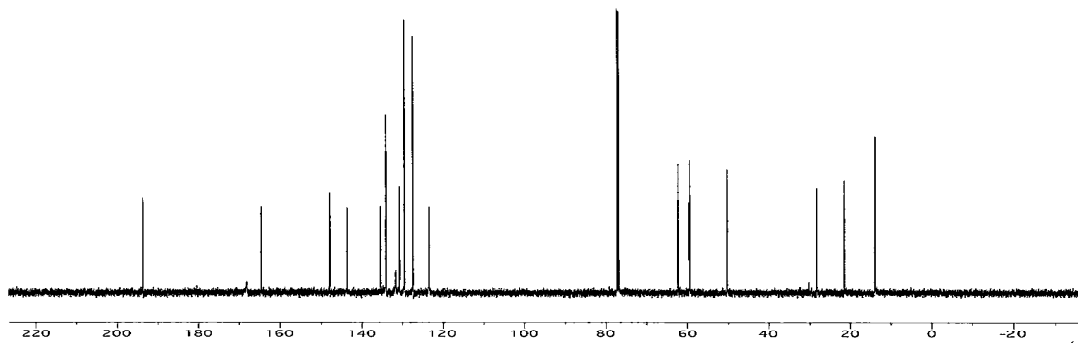
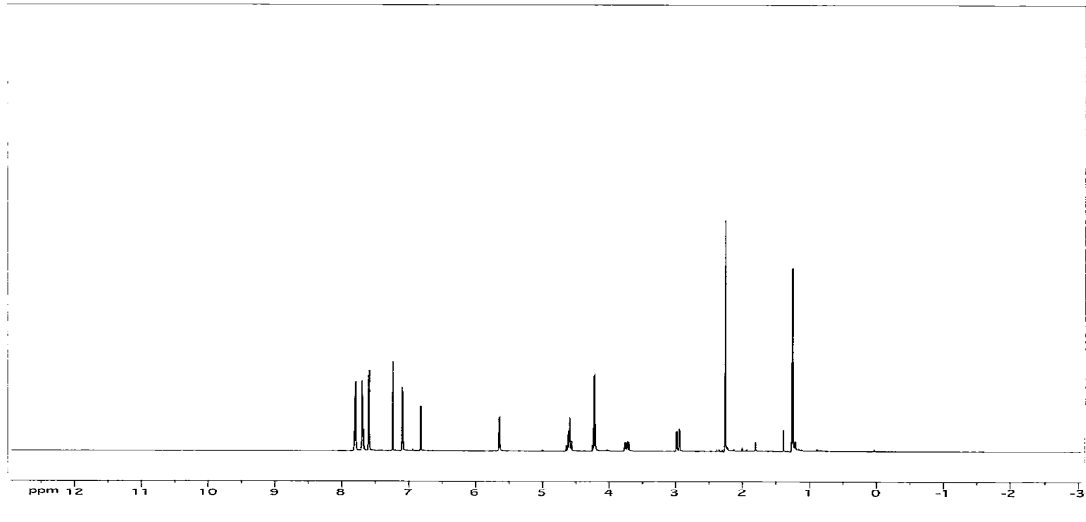
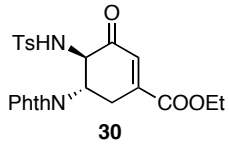
983

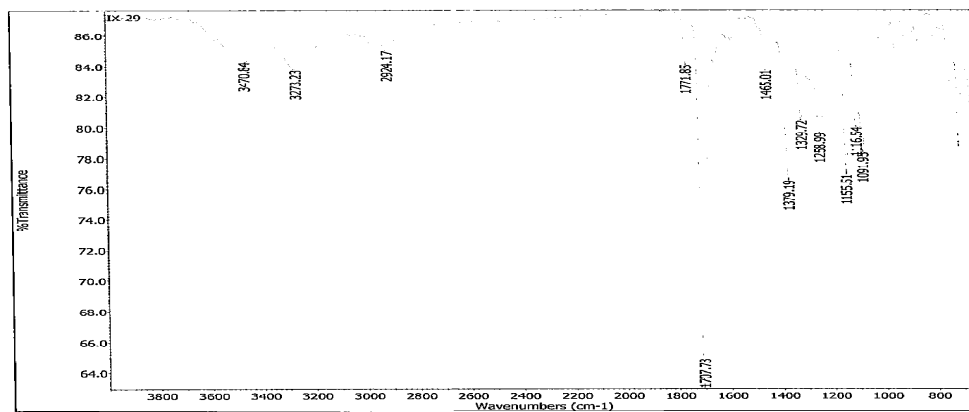
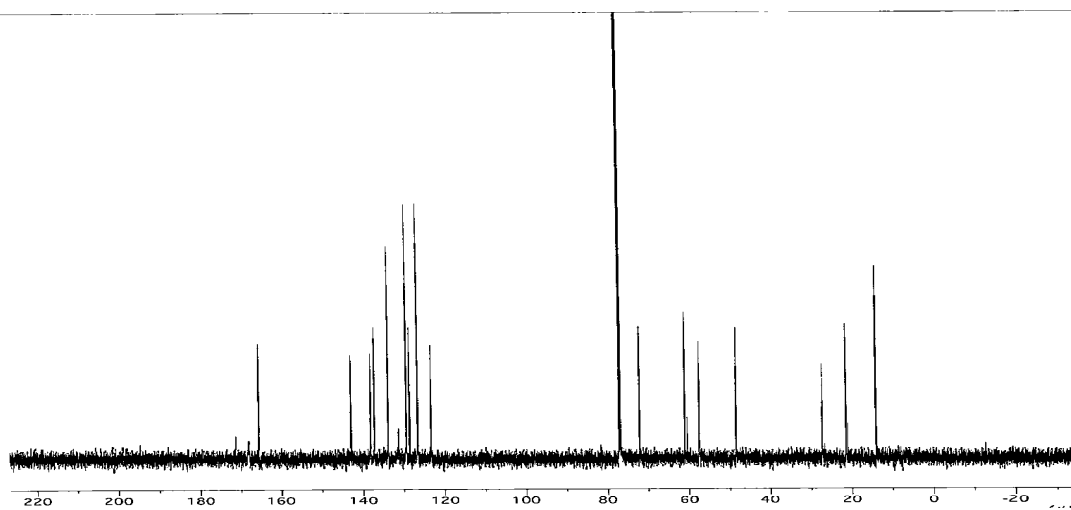
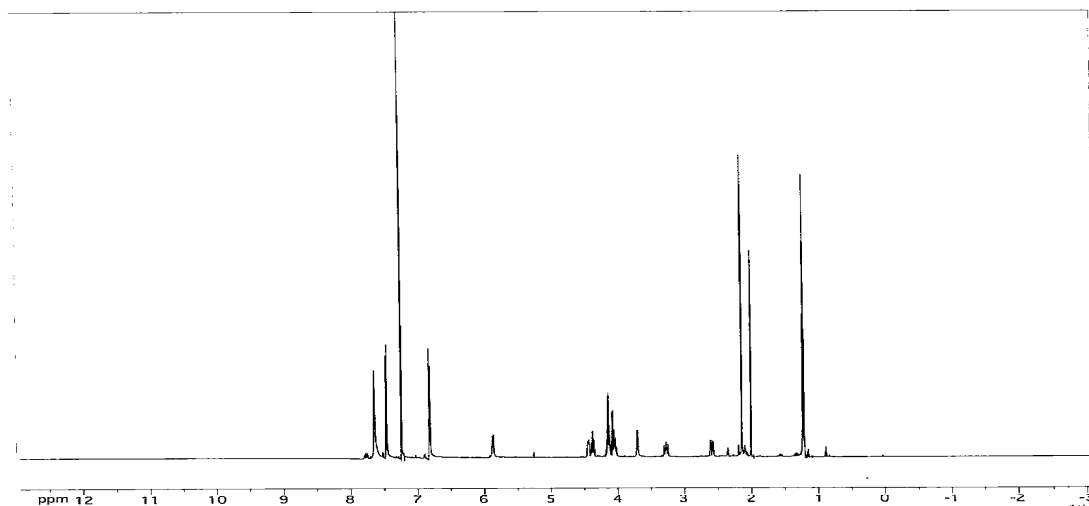
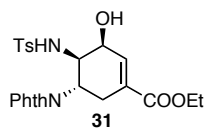


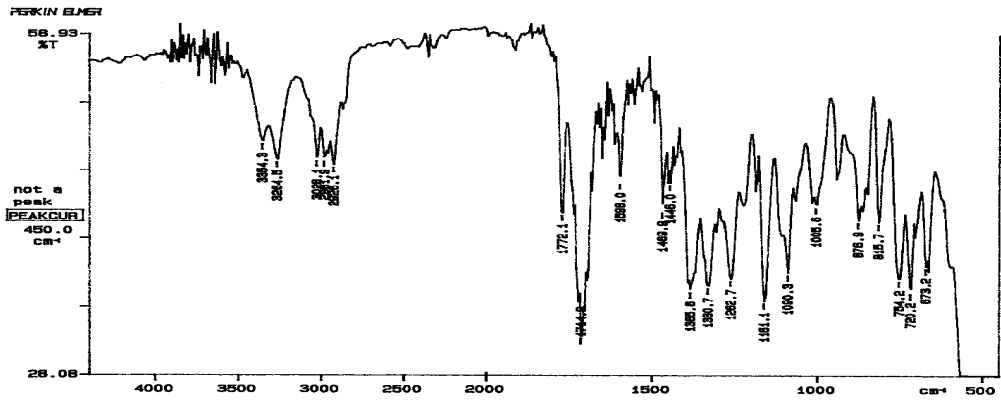
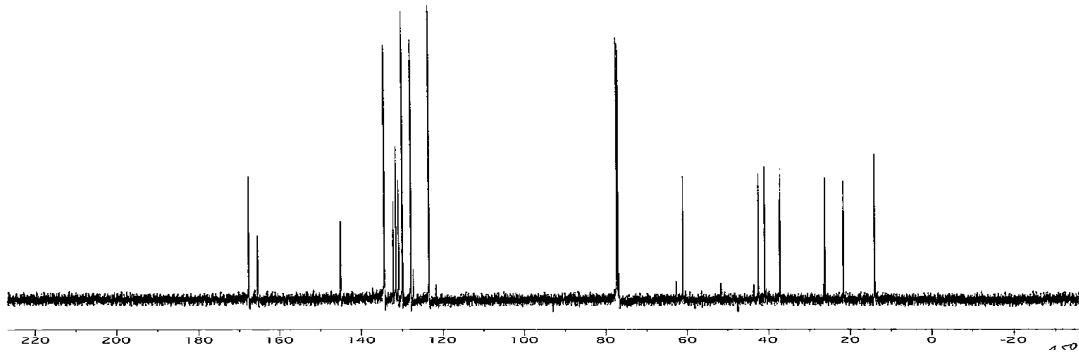
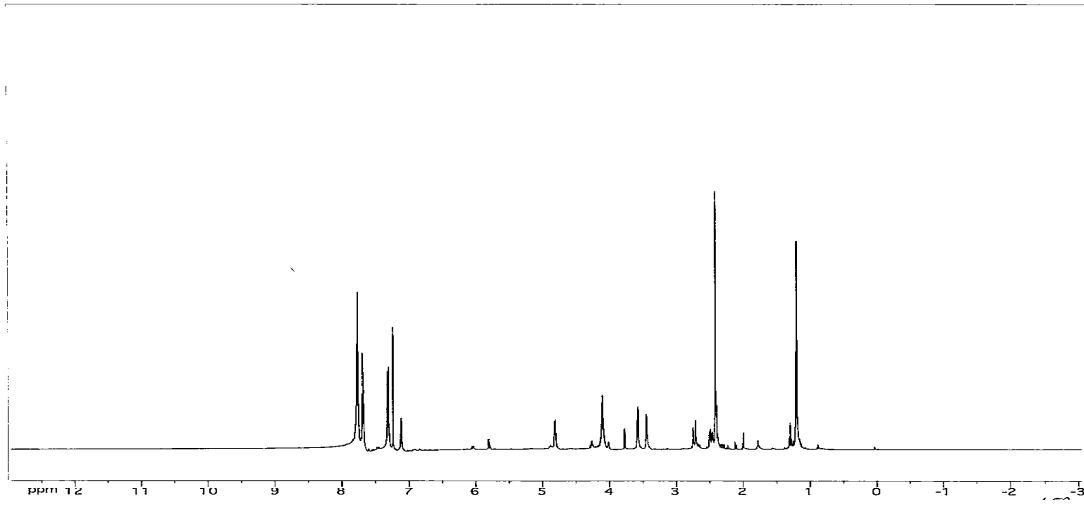
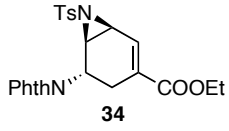
1.2.1



08/12/05 14:28
 X: 4 scans, 4.0cm-1

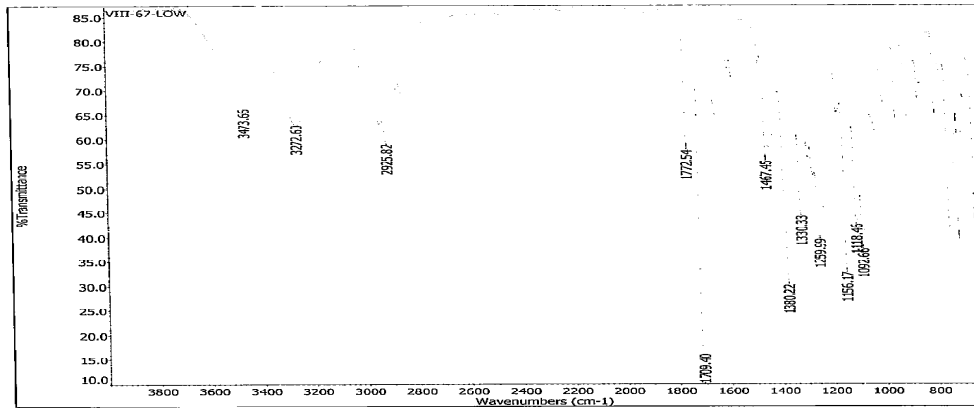
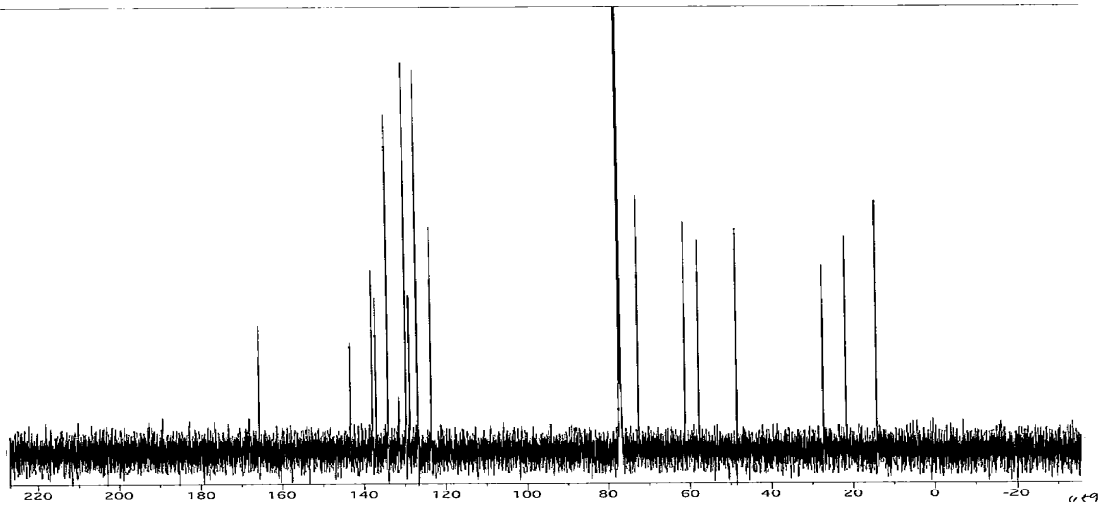
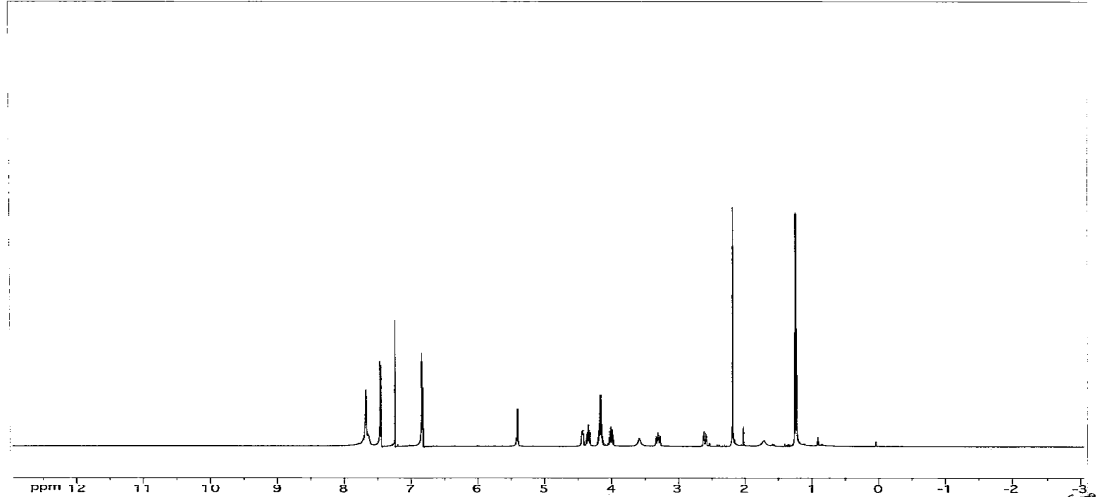
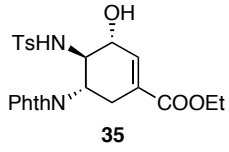




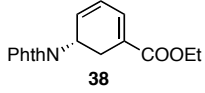


07/02/20 23:14
 X: 4 scans, 4.0cm⁻¹

4.50

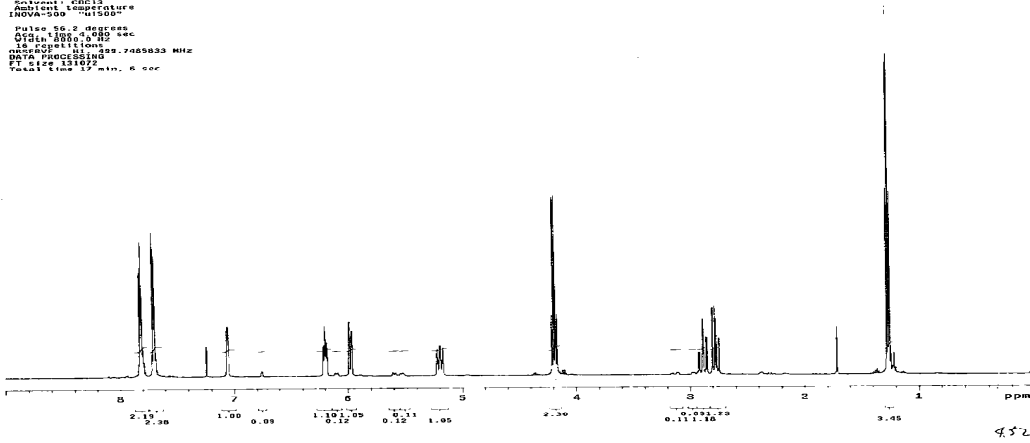


4.19



STANDARD PROTON PARAMETERS
 Pulse Sequence: s2p01
 Solvent: CDCl3
 Acquisition Temperature
 INOVA-500 "nu1500"
 Pulse: 56.2 degrees
 Delay: 4.000 sec
 Width: 12.000 Hz
 Decouple: 11.000 Hz
 Frequency: 125.760333 MHz
 Data Processing: 2.0 Hz
 Total Time 17 min. 8 sec

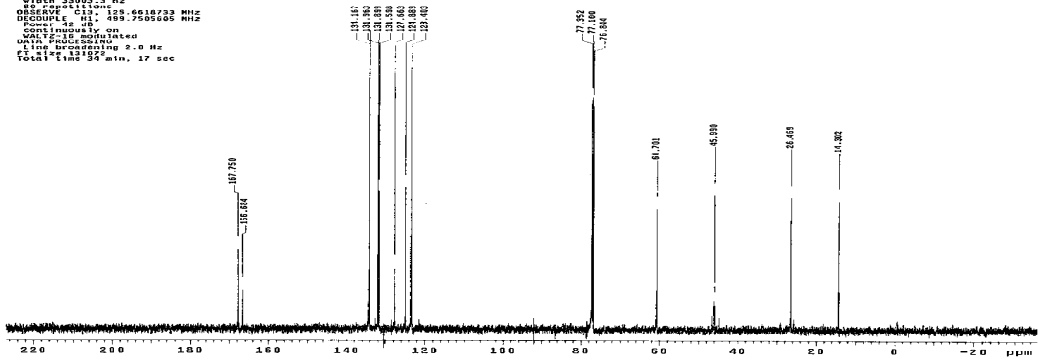
x 63 - x 4.5 C



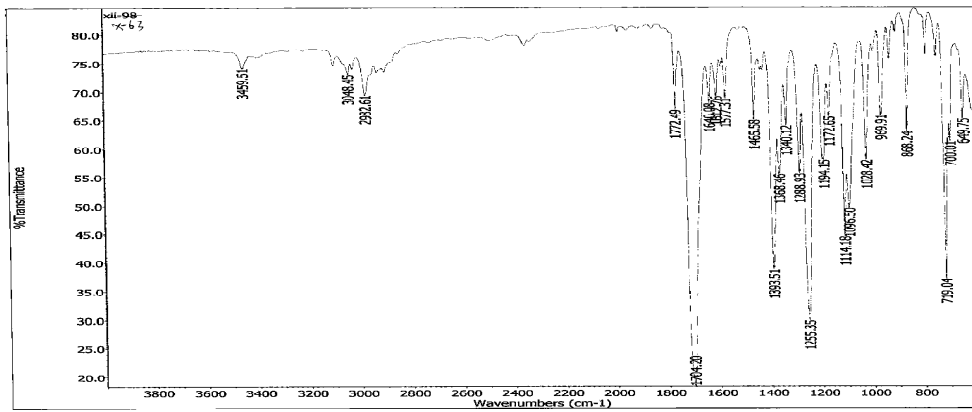
4.52

C13par
 Pulse sequence: s2p01
 Solvent: CDCl3
 Acquisition Temperature
 INOVA-500 "nu1500"
 Pulse: 45.000 sec
 Delay: 4.000 sec
 Width: 12.000 Hz
 Decouple: 11.000 Hz
 Frequency: 125.760333 MHz
 Data Processing: 2.0 Hz
 Total Time 56 min. 17 sec

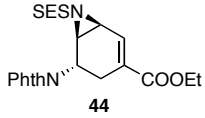
x 63 - x 1.5 C



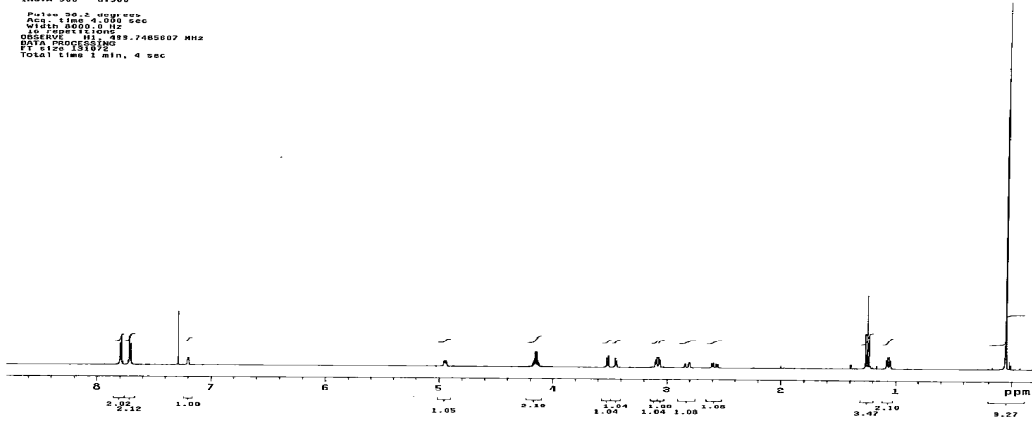
4.52



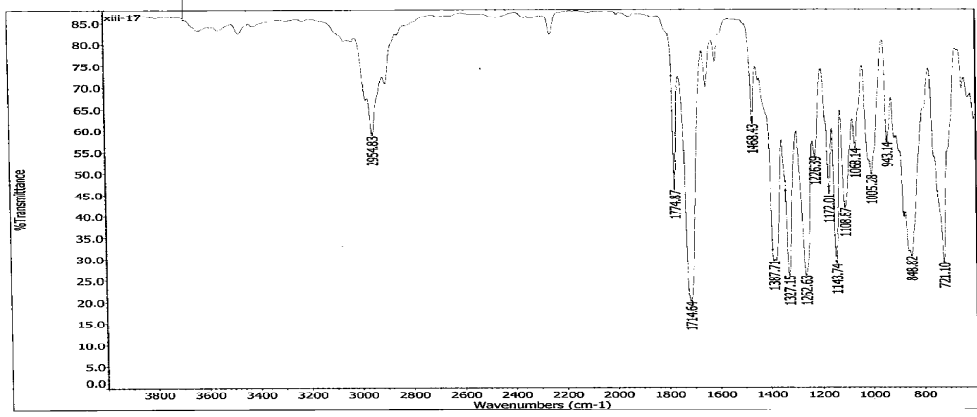
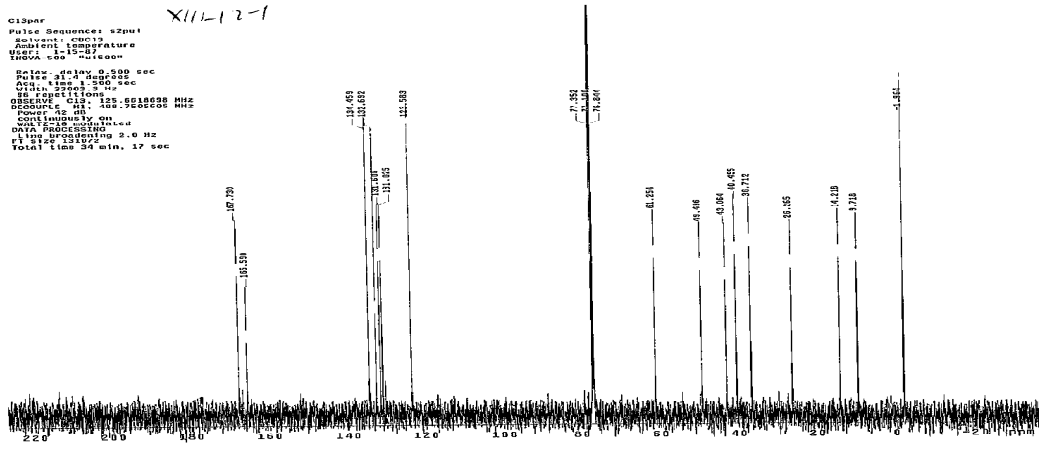
4.52

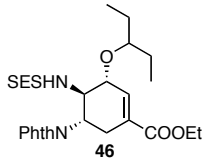


STANDARD PROTON PARAMETERS
 Pulse Sequence: s2pu1
 Solvent: CDCl3
 INOVA-500
 P1: 12.00
 P2: 12.00
 P3: 12.00
 P4: 12.00
 P5: 12.00
 P6: 12.00
 P7: 12.00
 P8: 12.00
 P9: 12.00
 P10: 12.00
 P11: 12.00
 P12: 12.00
 P13: 12.00
 P14: 12.00
 P15: 12.00
 P16: 12.00
 P17: 12.00
 P18: 12.00
 P19: 12.00
 P20: 12.00
 P21: 12.00
 P22: 12.00
 P23: 12.00
 P24: 12.00
 P25: 12.00
 P26: 12.00
 P27: 12.00
 P28: 12.00
 P29: 12.00
 P30: 12.00
 P31: 12.00
 P32: 12.00
 P33: 12.00
 P34: 12.00
 P35: 12.00
 P36: 12.00
 P37: 12.00
 P38: 12.00
 P39: 12.00
 P40: 12.00
 P41: 12.00
 P42: 12.00
 P43: 12.00
 P44: 12.00
 P45: 12.00
 P46: 12.00
 P47: 12.00
 P48: 12.00
 P49: 12.00
 P50: 12.00
 P51: 12.00
 P52: 12.00
 P53: 12.00
 P54: 12.00
 P55: 12.00
 P56: 12.00
 P57: 12.00
 P58: 12.00
 P59: 12.00
 P60: 12.00
 P61: 12.00
 P62: 12.00
 P63: 12.00
 P64: 12.00
 P65: 12.00
 P66: 12.00
 P67: 12.00
 P68: 12.00
 P69: 12.00
 P70: 12.00
 P71: 12.00
 P72: 12.00
 P73: 12.00
 P74: 12.00
 P75: 12.00
 P76: 12.00
 P77: 12.00
 P78: 12.00
 P79: 12.00
 P80: 12.00
 P81: 12.00
 P82: 12.00
 P83: 12.00
 P84: 12.00
 P85: 12.00
 P86: 12.00
 P87: 12.00
 P88: 12.00
 P89: 12.00
 P90: 12.00
 P91: 12.00
 P92: 12.00
 P93: 12.00
 P94: 12.00
 P95: 12.00
 P96: 12.00
 P97: 12.00
 P98: 12.00
 P99: 12.00
 P100: 12.00
 Total time 1 min, 4 sec

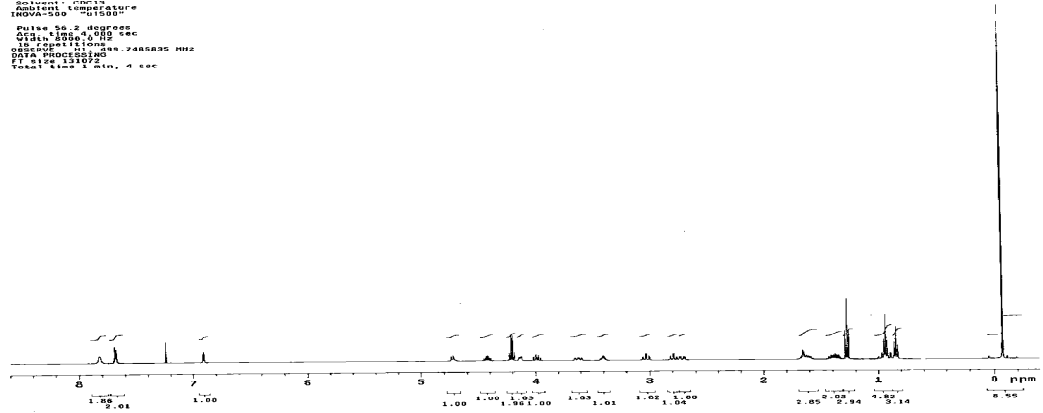


C13pqr
 Pulse Sequence: s2pu1
 Solvent: CDCl3
 Analysis Temperature: 30.00
 USG2: 15-07
 INOVA-500
 Relax delay: 0.500 sec
 P1: 12.00
 P2: 12.00
 P3: 12.00
 P4: 12.00
 P5: 12.00
 P6: 12.00
 P7: 12.00
 P8: 12.00
 P9: 12.00
 P10: 12.00
 P11: 12.00
 P12: 12.00
 P13: 12.00
 P14: 12.00
 P15: 12.00
 P16: 12.00
 P17: 12.00
 P18: 12.00
 P19: 12.00
 P20: 12.00
 P21: 12.00
 P22: 12.00
 P23: 12.00
 P24: 12.00
 P25: 12.00
 P26: 12.00
 P27: 12.00
 P28: 12.00
 P29: 12.00
 P30: 12.00
 P31: 12.00
 P32: 12.00
 P33: 12.00
 P34: 12.00
 P35: 12.00
 P36: 12.00
 P37: 12.00
 P38: 12.00
 P39: 12.00
 P40: 12.00
 P41: 12.00
 P42: 12.00
 P43: 12.00
 P44: 12.00
 P45: 12.00
 P46: 12.00
 P47: 12.00
 P48: 12.00
 P49: 12.00
 P50: 12.00
 P51: 12.00
 P52: 12.00
 P53: 12.00
 P54: 12.00
 P55: 12.00
 P56: 12.00
 P57: 12.00
 P58: 12.00
 P59: 12.00
 P60: 12.00
 P61: 12.00
 P62: 12.00
 P63: 12.00
 P64: 12.00
 P65: 12.00
 P66: 12.00
 P67: 12.00
 P68: 12.00
 P69: 12.00
 P70: 12.00
 P71: 12.00
 P72: 12.00
 P73: 12.00
 P74: 12.00
 P75: 12.00
 P76: 12.00
 P77: 12.00
 P78: 12.00
 P79: 12.00
 P80: 12.00
 P81: 12.00
 P82: 12.00
 P83: 12.00
 P84: 12.00
 P85: 12.00
 P86: 12.00
 P87: 12.00
 P88: 12.00
 P89: 12.00
 P90: 12.00
 P91: 12.00
 P92: 12.00
 P93: 12.00
 P94: 12.00
 P95: 12.00
 P96: 12.00
 P97: 12.00
 P98: 12.00
 P99: 12.00
 P100: 12.00
 Total time 34 min, 17 sec

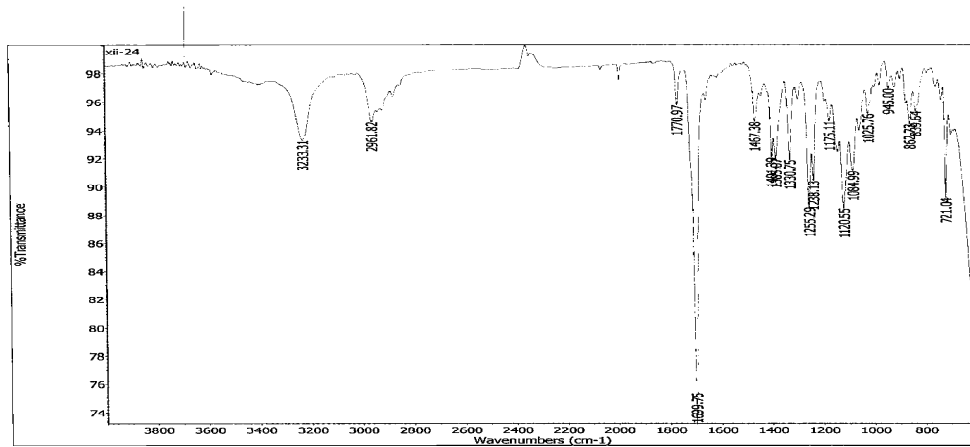
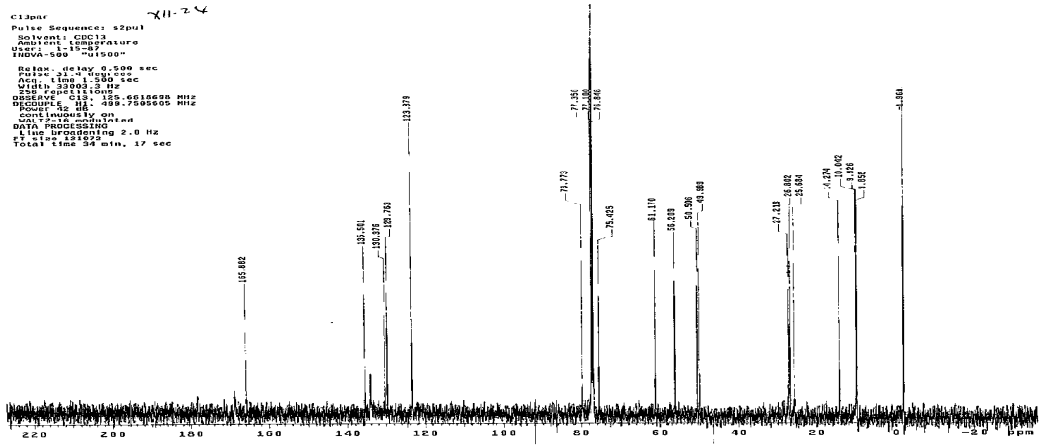


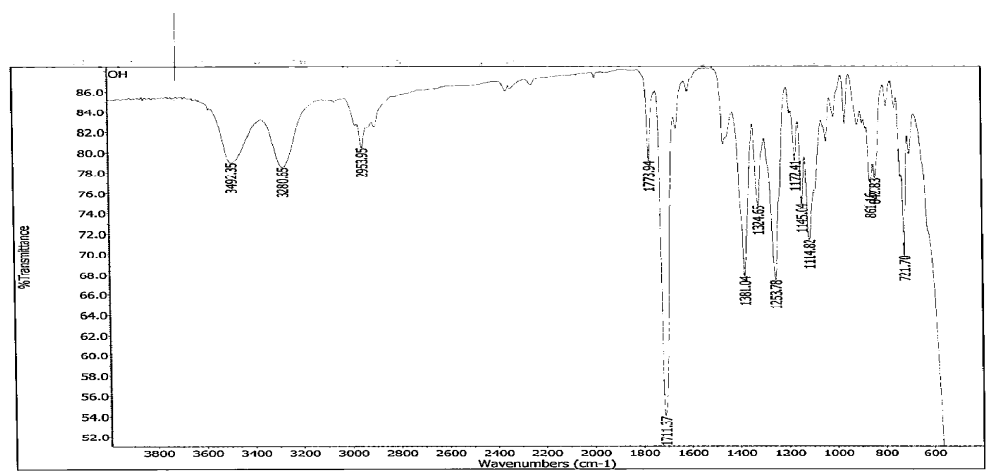
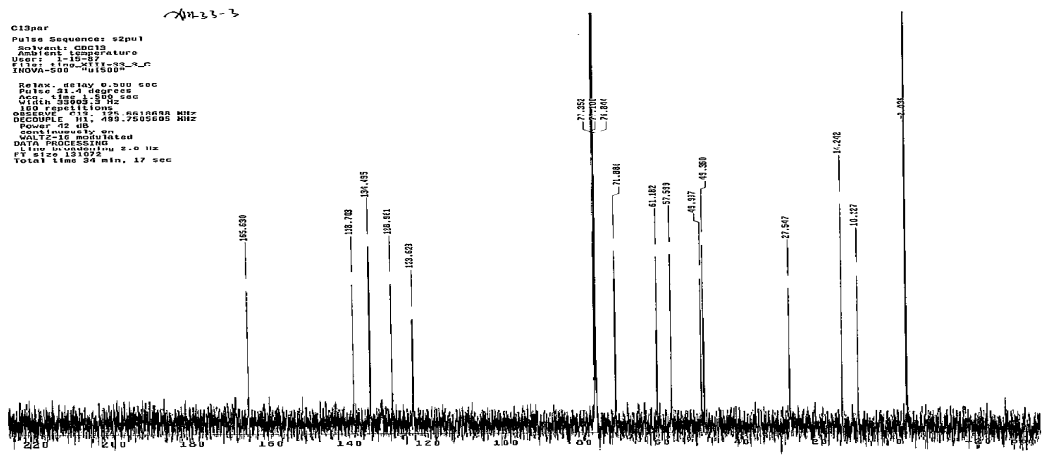
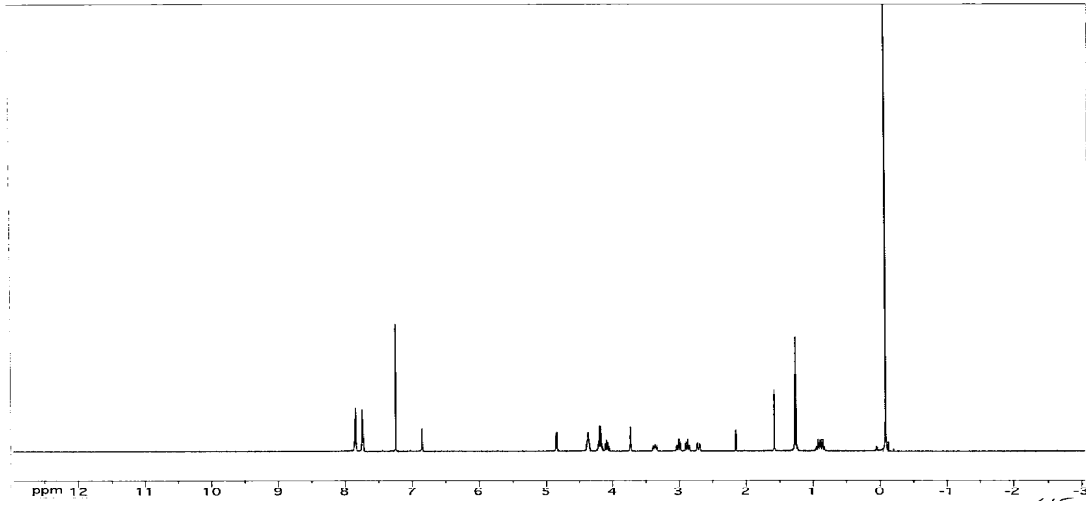
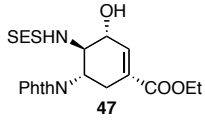


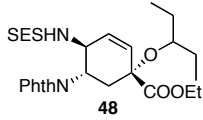
STANDARD PROTON PARAMETERS xii-2 ✓
 Pulse Sequence: s2pul
 Solvent: CDCl3
 Ambient Temperature: 30.0
 INOVA-500
 Pulse: 50.2 4000000
 Q1: 1.000 4.000 sec
 Q2: 1.000 4.000 sec
 IS: 200000000 2486335 MHz
 DATA PROCESSING: 4000000
 P1: 1.00 15.000 sec
 Total time: 1 min, 4 sec



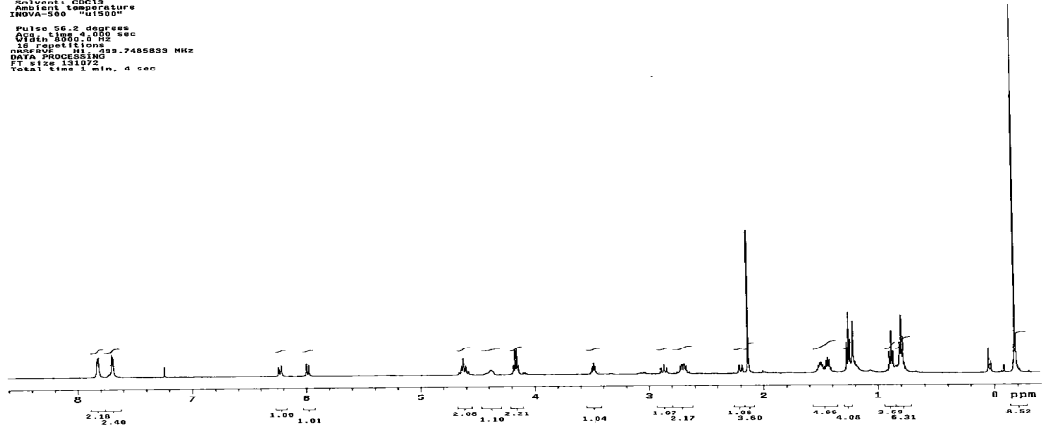
C13par xii-2 ✓
 Pulse Sequence: s2pul
 Solvent: CDCl3
 Ambient Temperature: 30.0
 INOVA-500
 Pulse: 40.0 101.500 sec
 Q1: 1.000 4.000 sec
 Q2: 1.000 4.000 sec
 IS: 200000000 6616698 MHz
 RESOLVE: 130 1.000 sec
 P1: 1.00 15.000 sec
 P2: 1.00 15.000 sec
 DATA PROCESSING: 4000000
 P1: 1.00 15.000 sec
 Total time: 58 min, 17 sec





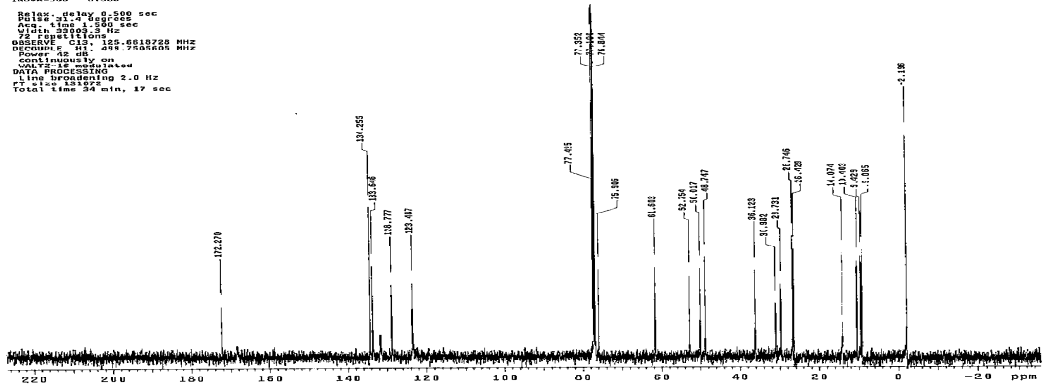


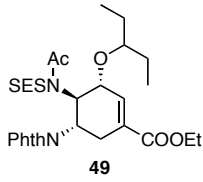
STANDARD PROTON PARAMETERS
 Pulse Sequence: s2pul
 Solvent: CDCl3
 Acquisition Temperature:
 INOVA-500 "015000"
 Pulse: 16.20 degrees
 Q1: 100.624 0.00 sec
 S: 15.00000000
 DATA PROCESSING
 F1: 125.6130722 MHz
 F2: 125.6130722 MHz
 Total Time: 1 min, 4 sec



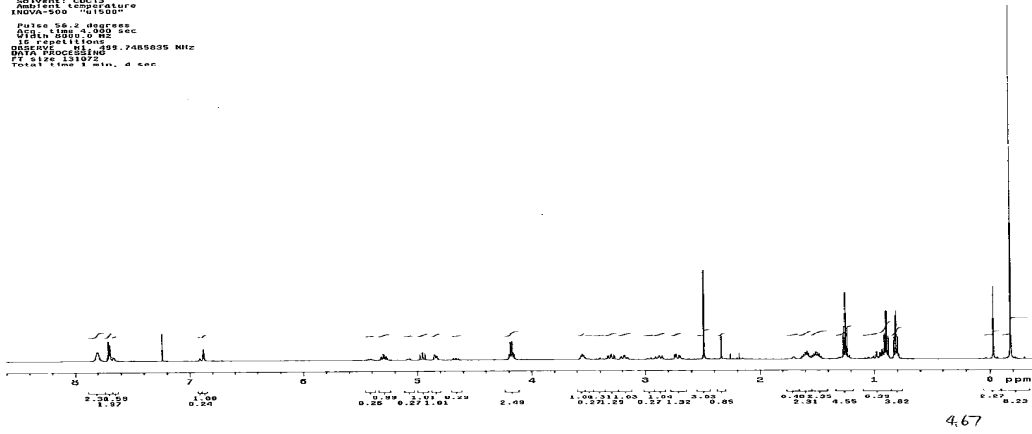
4.66

013par
 Pulse Sequence: s2pul
 Solvent: CDCl3
 Acquisition Temperature:
 INOVA-500 "015000"
 Pulse: 16.20 degrees
 Q1: 100.624 0.00 sec
 S: 15.00000000
 DATA PROCESSING
 F1: 125.6130722 MHz
 F2: 125.6130722 MHz
 Total Time: 56 min, 17 sec





STANDARD PROTON PARAMETERS
 Pulse Sequence: s2pul
 Solvent: CDCl3
 Acquisition Temperature: 300.2 K
 INOVA-500 "h1nuu"
 Pulse 16.2 degrees
 Q1: 1.000 sec
 Q2: 1.000 sec
 Q3: 1.000 sec
 Q4: 1.000 sec
 Q5: 1.000 sec
 Q6: 1.000 sec
 Q7: 1.000 sec
 Q8: 1.000 sec
 Q9: 1.000 sec
 Q10: 1.000 sec
 Q11: 1.000 sec
 Q12: 1.000 sec
 Q13: 1.000 sec
 Q14: 1.000 sec
 Q15: 1.000 sec
 Q16: 1.000 sec
 Q17: 1.000 sec
 Q18: 1.000 sec
 Q19: 1.000 sec
 Q20: 1.000 sec
 Q21: 1.000 sec
 Q22: 1.000 sec
 Q23: 1.000 sec
 Q24: 1.000 sec
 Q25: 1.000 sec
 Q26: 1.000 sec
 Q27: 1.000 sec
 Q28: 1.000 sec
 Q29: 1.000 sec
 Q30: 1.000 sec
 Q31: 1.000 sec
 Q32: 1.000 sec
 Q33: 1.000 sec
 Q34: 1.000 sec
 Q35: 1.000 sec
 Q36: 1.000 sec
 Q37: 1.000 sec
 Q38: 1.000 sec
 Q39: 1.000 sec
 Q40: 1.000 sec
 Q41: 1.000 sec
 Q42: 1.000 sec
 Q43: 1.000 sec
 Q44: 1.000 sec
 Q45: 1.000 sec
 Q46: 1.000 sec
 Q47: 1.000 sec
 Q48: 1.000 sec
 Q49: 1.000 sec
 Q50: 1.000 sec
 Q51: 1.000 sec
 Q52: 1.000 sec
 Q53: 1.000 sec
 Q54: 1.000 sec
 Q55: 1.000 sec
 Q56: 1.000 sec
 Q57: 1.000 sec
 Q58: 1.000 sec
 Q59: 1.000 sec
 Q60: 1.000 sec
 Q61: 1.000 sec
 Q62: 1.000 sec
 Q63: 1.000 sec
 Q64: 1.000 sec
 Q65: 1.000 sec
 Q66: 1.000 sec
 Q67: 1.000 sec
 Q68: 1.000 sec
 Q69: 1.000 sec
 Q70: 1.000 sec
 Q71: 1.000 sec
 Q72: 1.000 sec
 Q73: 1.000 sec
 Q74: 1.000 sec
 Q75: 1.000 sec
 Q76: 1.000 sec
 Q77: 1.000 sec
 Q78: 1.000 sec
 Q79: 1.000 sec
 Q80: 1.000 sec
 Q81: 1.000 sec
 Q82: 1.000 sec
 Q83: 1.000 sec
 Q84: 1.000 sec
 Q85: 1.000 sec
 Q86: 1.000 sec
 Q87: 1.000 sec
 Q88: 1.000 sec
 Q89: 1.000 sec
 Q90: 1.000 sec
 Q91: 1.000 sec
 Q92: 1.000 sec
 Q93: 1.000 sec
 Q94: 1.000 sec
 Q95: 1.000 sec
 Q96: 1.000 sec
 Q97: 1.000 sec
 Q98: 1.000 sec
 Q99: 1.000 sec
 Q100: 1.000 sec
 Total Time 1 min. 4 sec



C13pmr
 Pulse Sequence: s2pul
 Solvent: CDCl3
 Acquisition Temperature: 300.2 K
 INOVA-500 "h1nuu"
 Pulse 16.2 degrees
 Q1: 1.000 sec
 Q2: 1.000 sec
 Q3: 1.000 sec
 Q4: 1.000 sec
 Q5: 1.000 sec
 Q6: 1.000 sec
 Q7: 1.000 sec
 Q8: 1.000 sec
 Q9: 1.000 sec
 Q10: 1.000 sec
 Q11: 1.000 sec
 Q12: 1.000 sec
 Q13: 1.000 sec
 Q14: 1.000 sec
 Q15: 1.000 sec
 Q16: 1.000 sec
 Q17: 1.000 sec
 Q18: 1.000 sec
 Q19: 1.000 sec
 Q20: 1.000 sec
 Q21: 1.000 sec
 Q22: 1.000 sec
 Q23: 1.000 sec
 Q24: 1.000 sec
 Q25: 1.000 sec
 Q26: 1.000 sec
 Q27: 1.000 sec
 Q28: 1.000 sec
 Q29: 1.000 sec
 Q30: 1.000 sec
 Q31: 1.000 sec
 Q32: 1.000 sec
 Q33: 1.000 sec
 Q34: 1.000 sec
 Q35: 1.000 sec
 Q36: 1.000 sec
 Q37: 1.000 sec
 Q38: 1.000 sec
 Q39: 1.000 sec
 Q40: 1.000 sec
 Q41: 1.000 sec
 Q42: 1.000 sec
 Q43: 1.000 sec
 Q44: 1.000 sec
 Q45: 1.000 sec
 Q46: 1.000 sec
 Q47: 1.000 sec
 Q48: 1.000 sec
 Q49: 1.000 sec
 Q50: 1.000 sec
 Q51: 1.000 sec
 Q52: 1.000 sec
 Q53: 1.000 sec
 Q54: 1.000 sec
 Q55: 1.000 sec
 Q56: 1.000 sec
 Q57: 1.000 sec
 Q58: 1.000 sec
 Q59: 1.000 sec
 Q60: 1.000 sec
 Q61: 1.000 sec
 Q62: 1.000 sec
 Q63: 1.000 sec
 Q64: 1.000 sec
 Q65: 1.000 sec
 Q66: 1.000 sec
 Q67: 1.000 sec
 Q68: 1.000 sec
 Q69: 1.000 sec
 Q70: 1.000 sec
 Q71: 1.000 sec
 Q72: 1.000 sec
 Q73: 1.000 sec
 Q74: 1.000 sec
 Q75: 1.000 sec
 Q76: 1.000 sec
 Q77: 1.000 sec
 Q78: 1.000 sec
 Q79: 1.000 sec
 Q80: 1.000 sec
 Q81: 1.000 sec
 Q82: 1.000 sec
 Q83: 1.000 sec
 Q84: 1.000 sec
 Q85: 1.000 sec
 Q86: 1.000 sec
 Q87: 1.000 sec
 Q88: 1.000 sec
 Q89: 1.000 sec
 Q90: 1.000 sec
 Q91: 1.000 sec
 Q92: 1.000 sec
 Q93: 1.000 sec
 Q94: 1.000 sec
 Q95: 1.000 sec
 Q96: 1.000 sec
 Q97: 1.000 sec
 Q98: 1.000 sec
 Q99: 1.000 sec
 Q100: 1.000 sec
 Total Time 54 min. 17 sec

