

## Supplement

### **Hypochlorite-modified high-density lipoprotein promotes induction of HO-1 in endothelial cells via activation of p42/44 MAPK and zinc finger transcription factor**

#### **Egr-1**

Christine Rossmann, Anamaria Rauh, Astrid Hammer, Werner Windischhofer, Sandra Zirkel, Wolfgang Sattler, and Ernst Malle

### **MATERIALS AND METHODS**

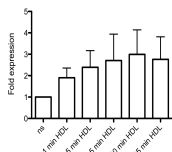
#### **Densitometric Evaluation of Western Blot Analysis**

Western blot experiments were performed as described in the Materials and Methods section in the main manuscript. Figures (Supplement Fig. IA-E and Supplement Fig. IIB/C) represent densitometric evaluations of immunoreactive bands shown in Fig. 1 (A-E) and Fig. 2 (B/C). Bands were scanned and the intensity of Western blot bands was determined using ImageJ 1.40g software from Wayne Rasband of the National Institutes of Health (Bethesda, MD, USA). The relative intensity of each band was calculated by dividing the absolute intensity of each sample band by the absolute intensity of the respective loading control band. Relative intensities were normalized to the level in non-stimulated control cells. Values (given as mean  $\pm$  SD) were considered as significantly different at \*  $p < 0.05$ , \*\*  $p < 0.01$  and \*\*\*  $p < 0.001$ .

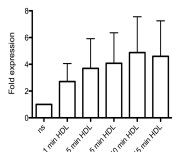
# Supplement Figure 1

**A**

pp24/44 expression vs  $\beta$ -Actin

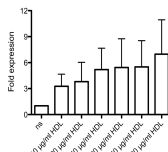


pp38 expression vs  $\beta$ -Actin

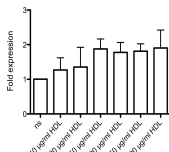


**B**

pp24/44 expression vs  $\beta$ -Actin

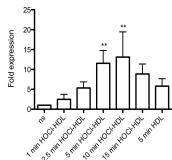


pp38 expression vs  $\beta$ -Actin

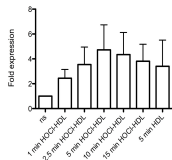


**C**

pp24/44 expression vs  $\beta$ -Actin

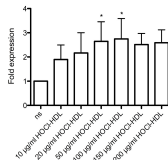


pp38 expression vs  $\beta$ -Actin

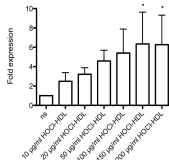


**D**

pp24/44 expression vs  $\beta$ -Actin

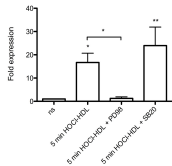


pp38 expression vs  $\beta$ -Actin

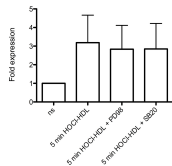


**E**

pp24/44 expression vs  $\beta$ -Actin



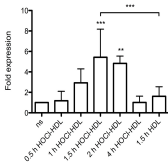
pp38 expression vs  $\beta$ -Actin



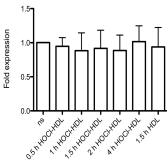
# Supplement Figure II

## B

Egr-1 expression vs  $\beta$ -Actin

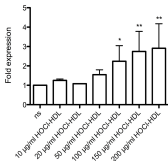


Nrf2 expression vs  $\beta$ -Actin



## C

Egr-1 expression vs  $\beta$ -Actin



Nrf2 expression vs  $\beta$ -Actin

