

Supplemental Material

Fig. I

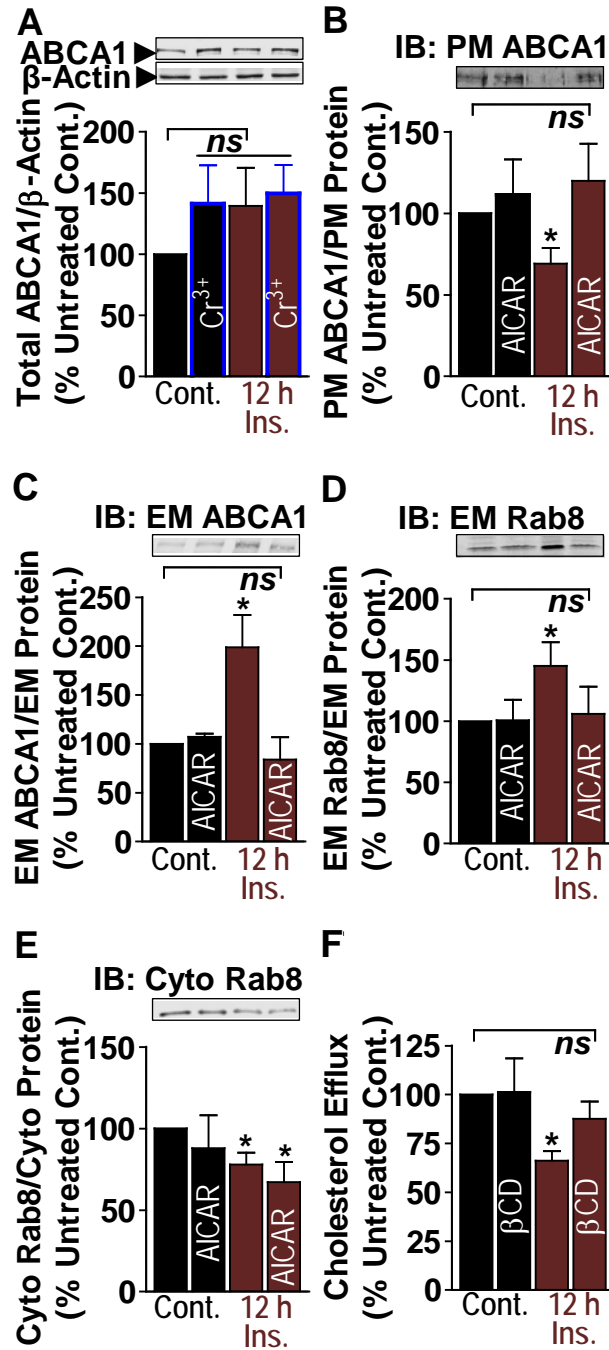


Fig. S1. Control (Cont.) or hyperinsulinemic (12h Ins) cells were treated without or with Cr³⁺, AICAR or β CD. (A) Whole cell ABCA1, (B) PM ABCA1, (C) EM ABCA1, (D) EM Rab8, (E) Cyto Rab8, and (E) ApoA-1-mediated cholesterol efflux. N=3-4.

*P<0.05 versus untreated control.