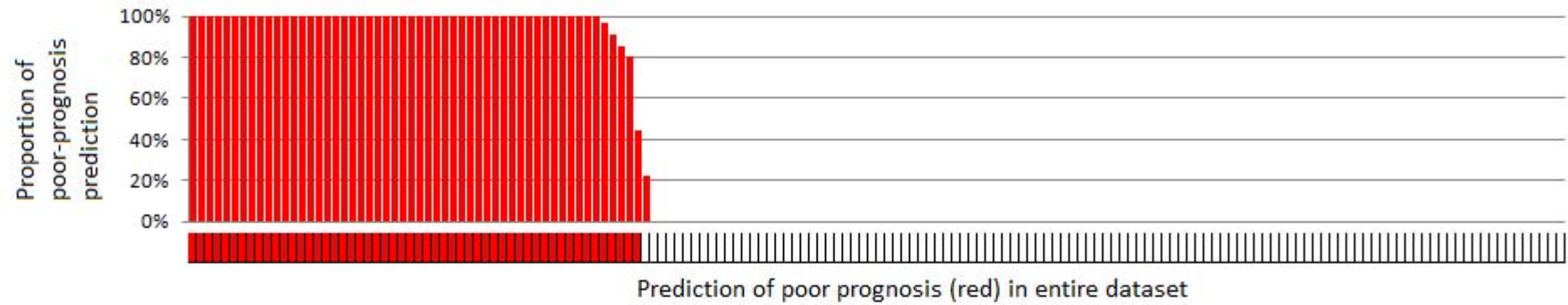


SUPPLEMENTARY FIGURE LEGENDS

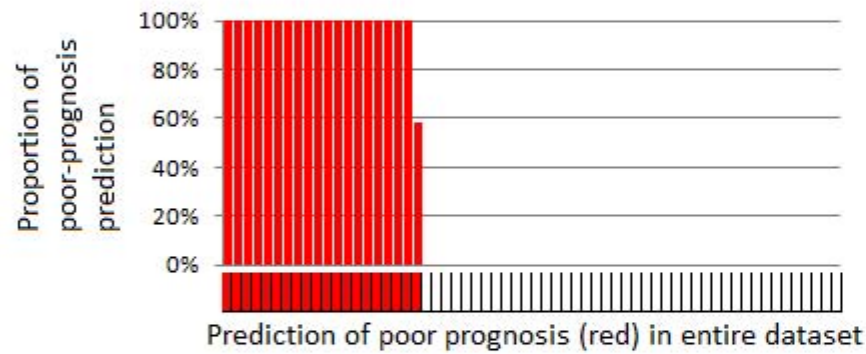
Supplementary figure 1: Robustness of gene signature-based prediction. Upper panel: Proportion of poor-prognosis prediction for Boyault's G3 signature in HCC tumor tissues. Lower panel: Proportion of poor-prognosis prediction for Hoshida's survival signature in non-tumor liver tissues. The proportion for each sample was calculated based on bootstrap prediction analysis (N=100).

Boyault's G3 signature on HCC tumor tissues

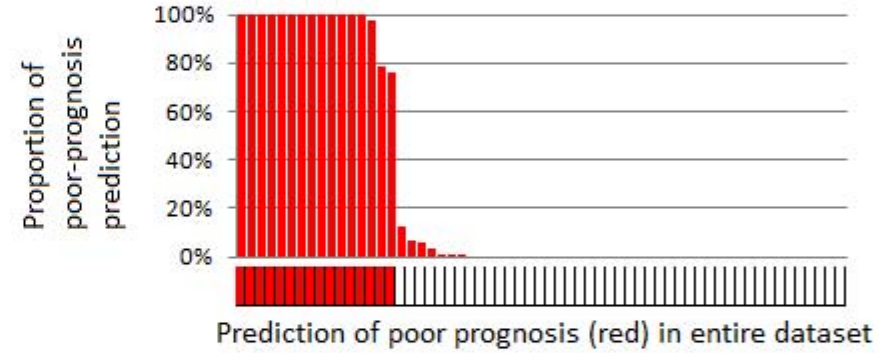
FFPE HCC tissues (Spain/Italy/US, N=164)



FFPE HCC tissues (Japan, N=62)



Fresh frozen HCC tissues (Spain/Italy/US, N=61)



Hoshida's survival signature on non-tumor liver tissues

FFPE non-tumor liver tissues (Spain/Italy/US, N=164)

