

Supporting information for:

Drug-loaded, bivalent-bottle-brush polymers by graft-through ROMP

Jeremiah A. Johnson, Ying Y. Lu, Alan O. Burts, Alec C. Durrell, Yan Xia, David A. Tirrell, Robert H. Grubbs

*Division of Chemistry and Chemical Engineering, California Institute of Technology, 1200 E. California Blvd., Pasadena,
California 91125*

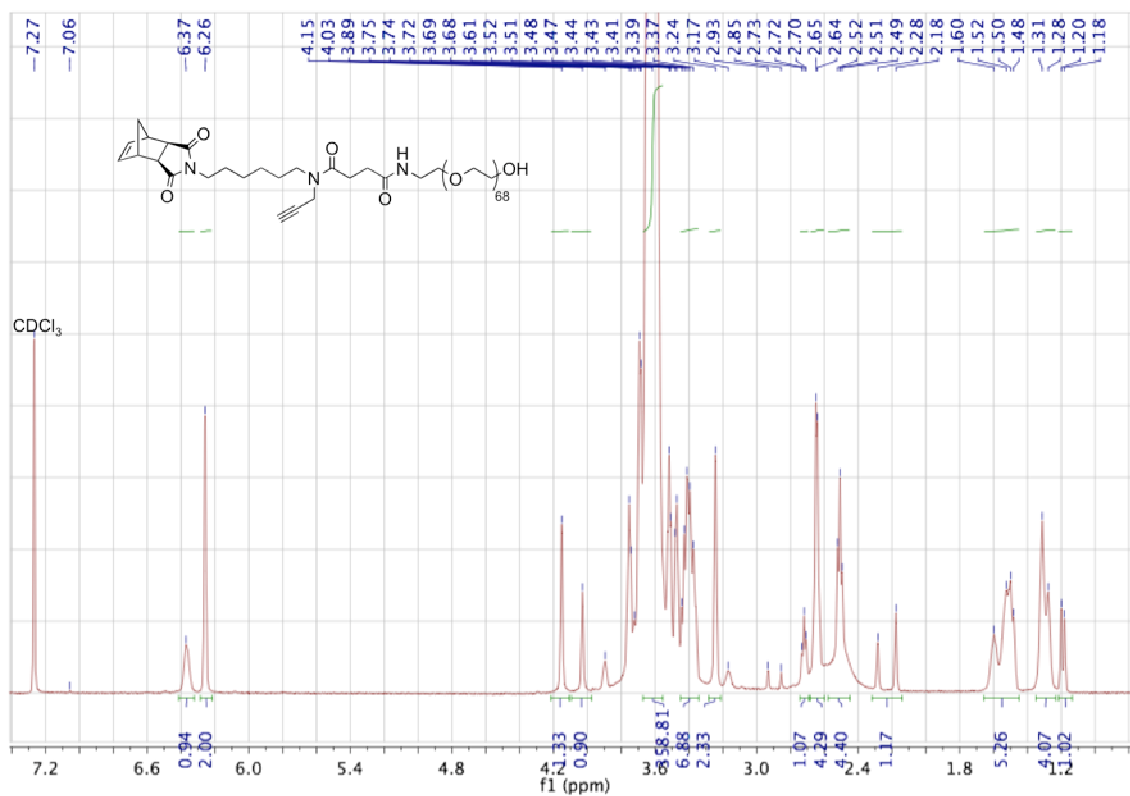


Figure S2. 500 MHz ^1H NMR spectrum of **7** in CDCl_3 .

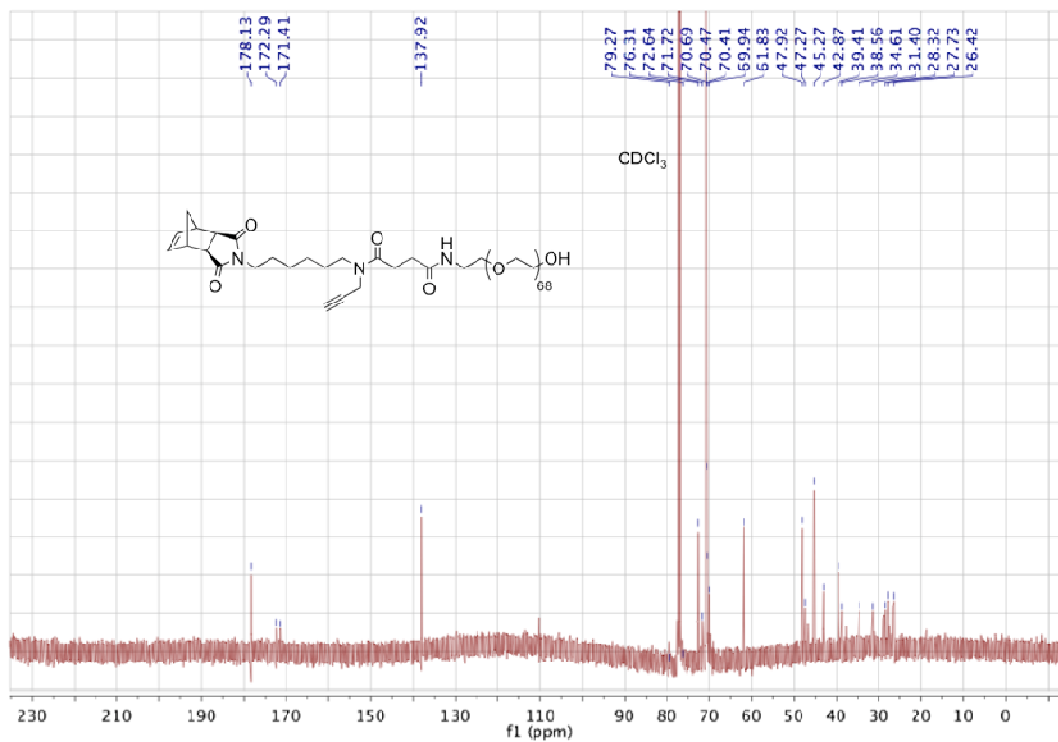


Figure S3. 500 MHz ^{13}C NMR spectrum of **7** in CDCl_3 .

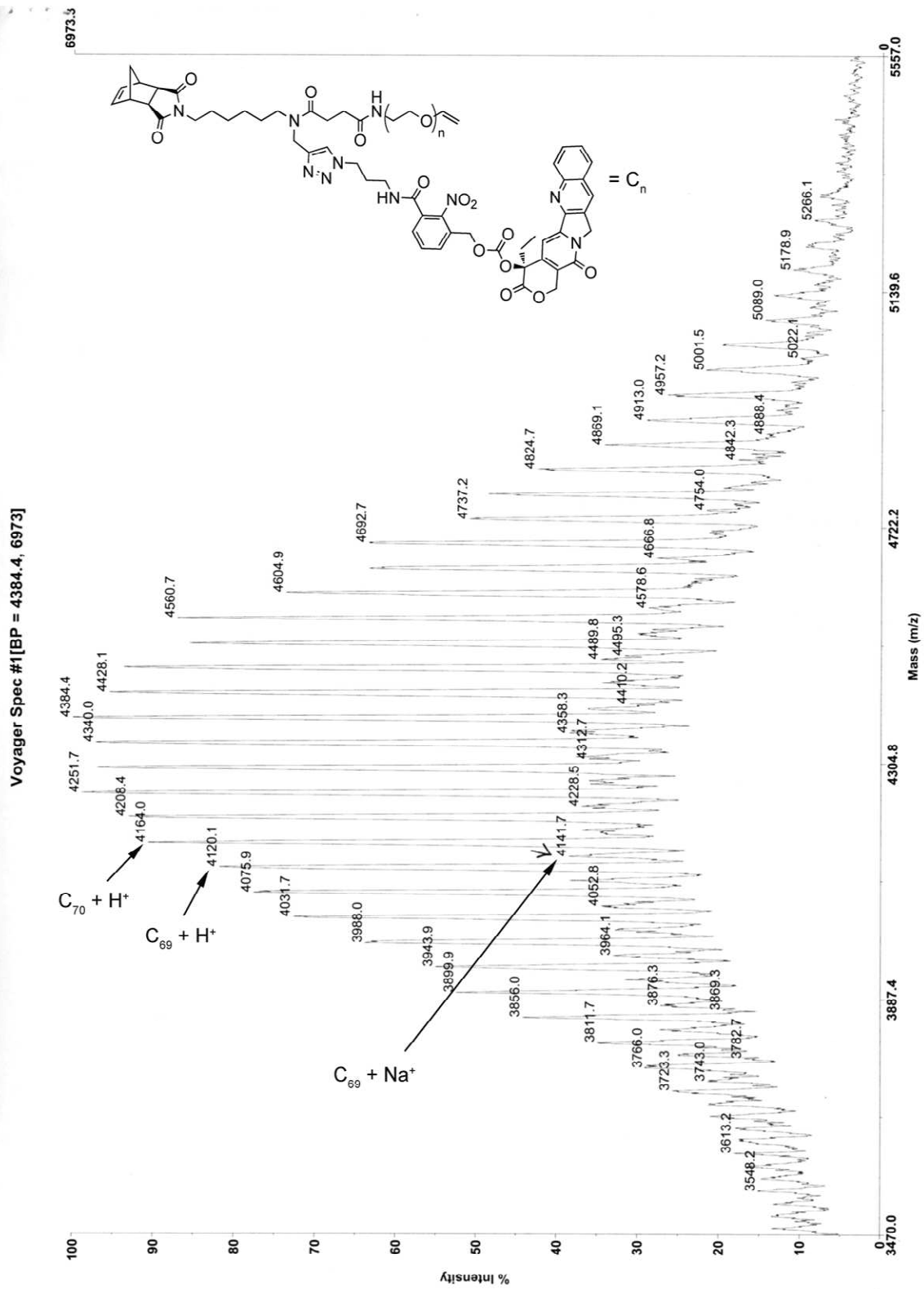


Figure S4. MALDI spectrum of CT-MM

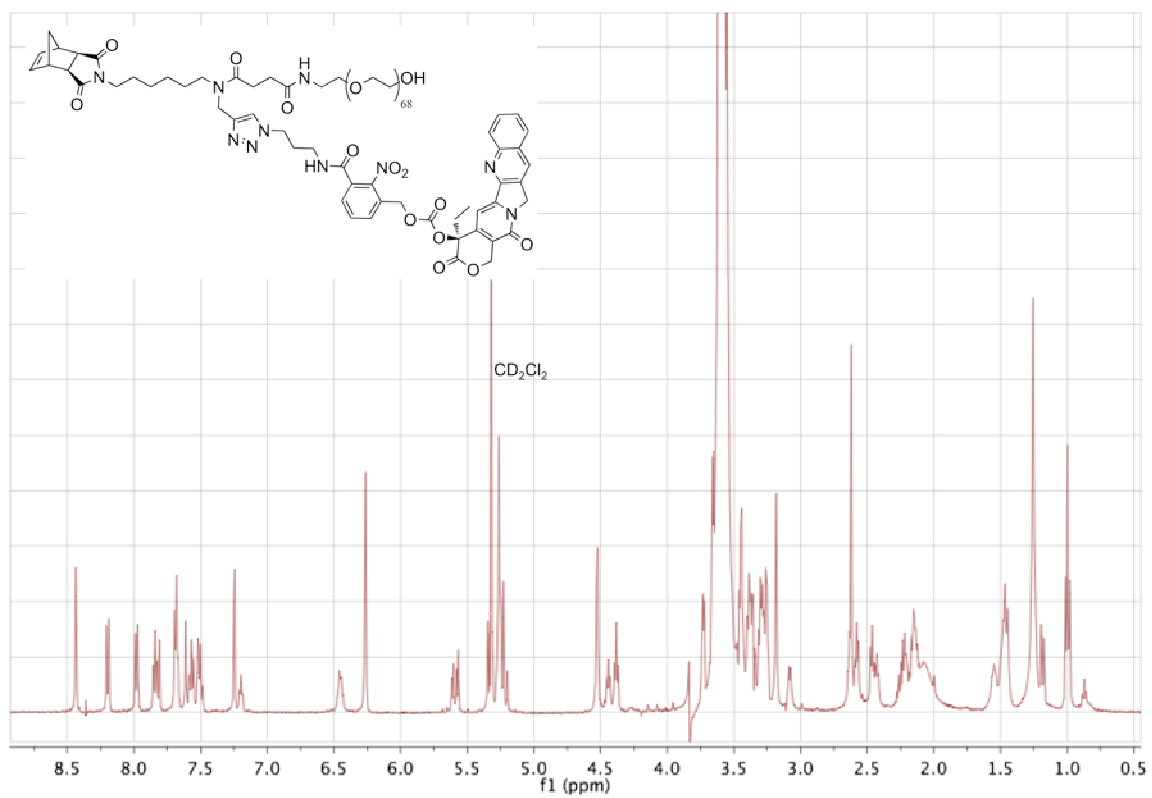


Figure S5. 500 MHz 1H NMR spectrum of **CT-MM** in CD_2Cl_2 .

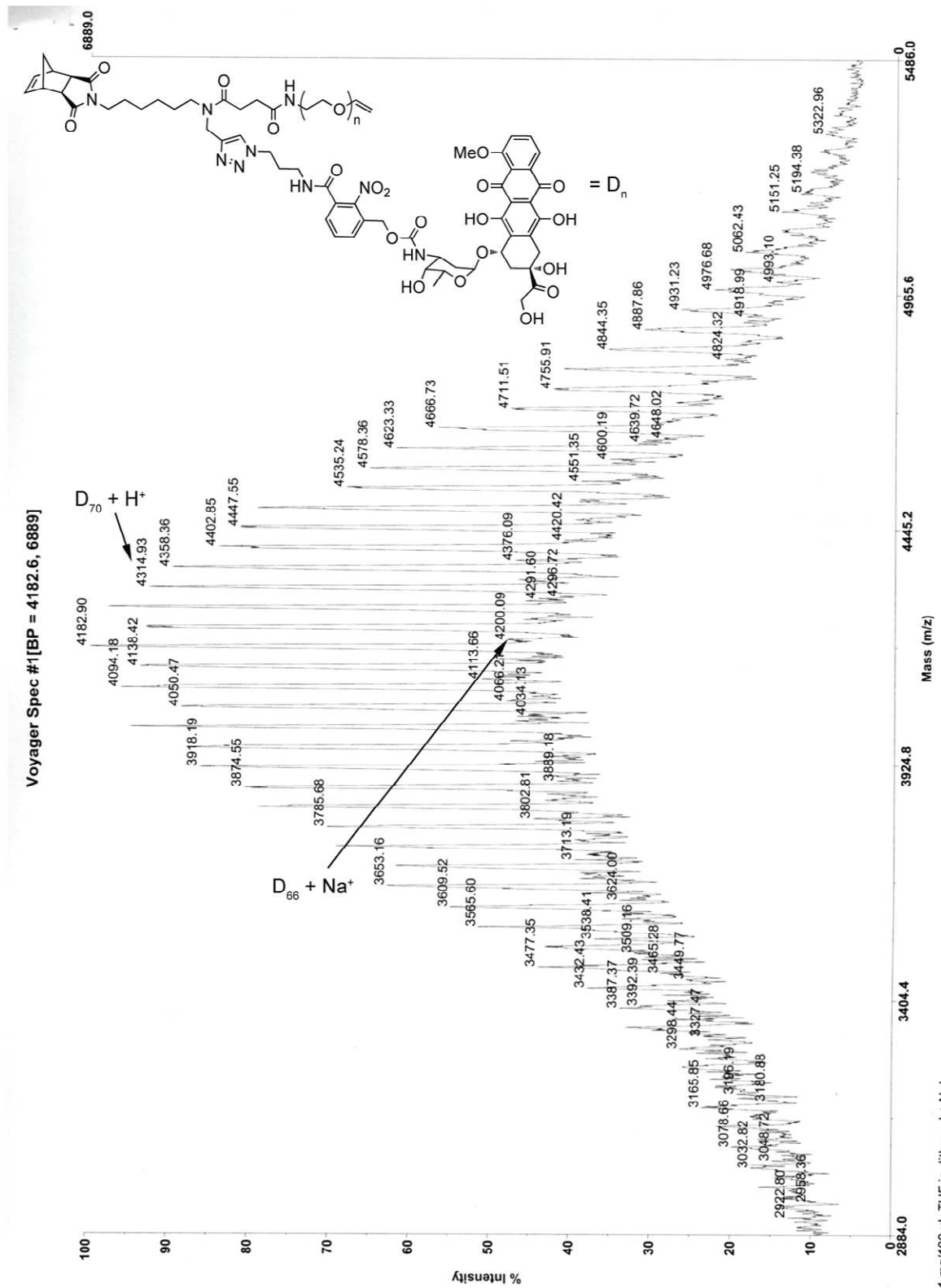


Figure S6. MALDI spectrum of DOX-MM

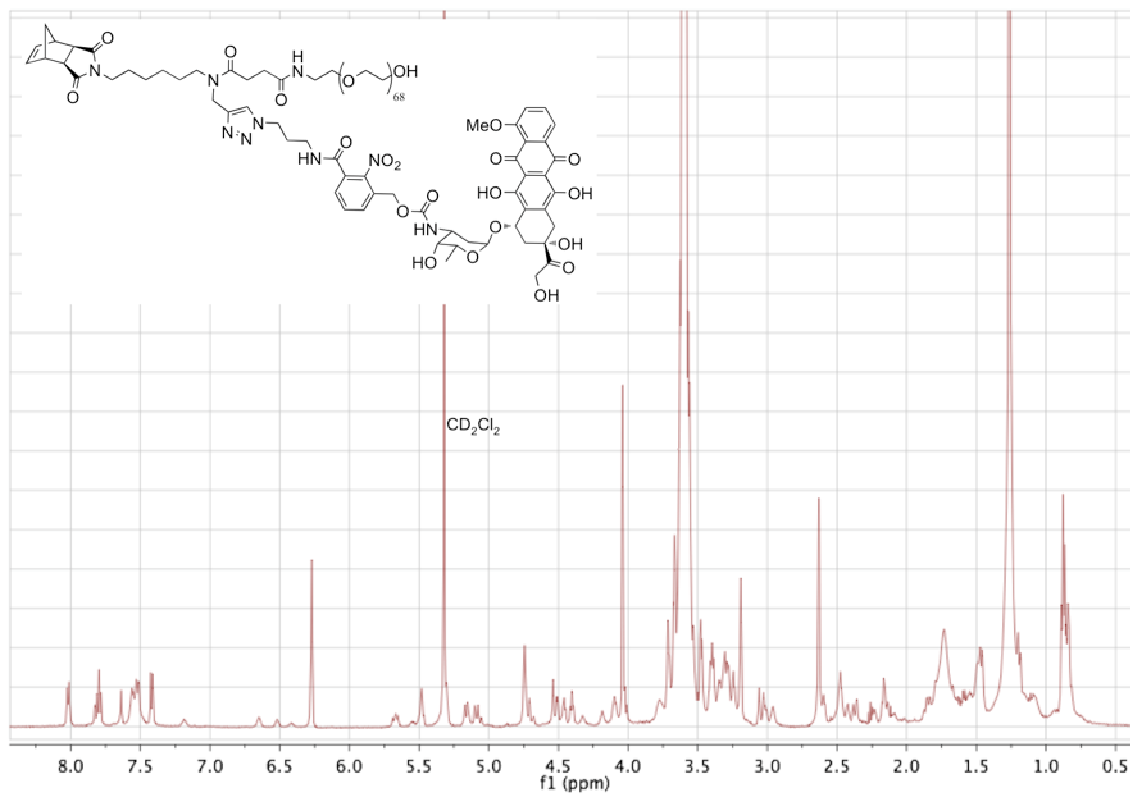


Figure S7. 500 MHz ¹H NMR spectrum of **DOX-MM** in CD₂Cl₂.

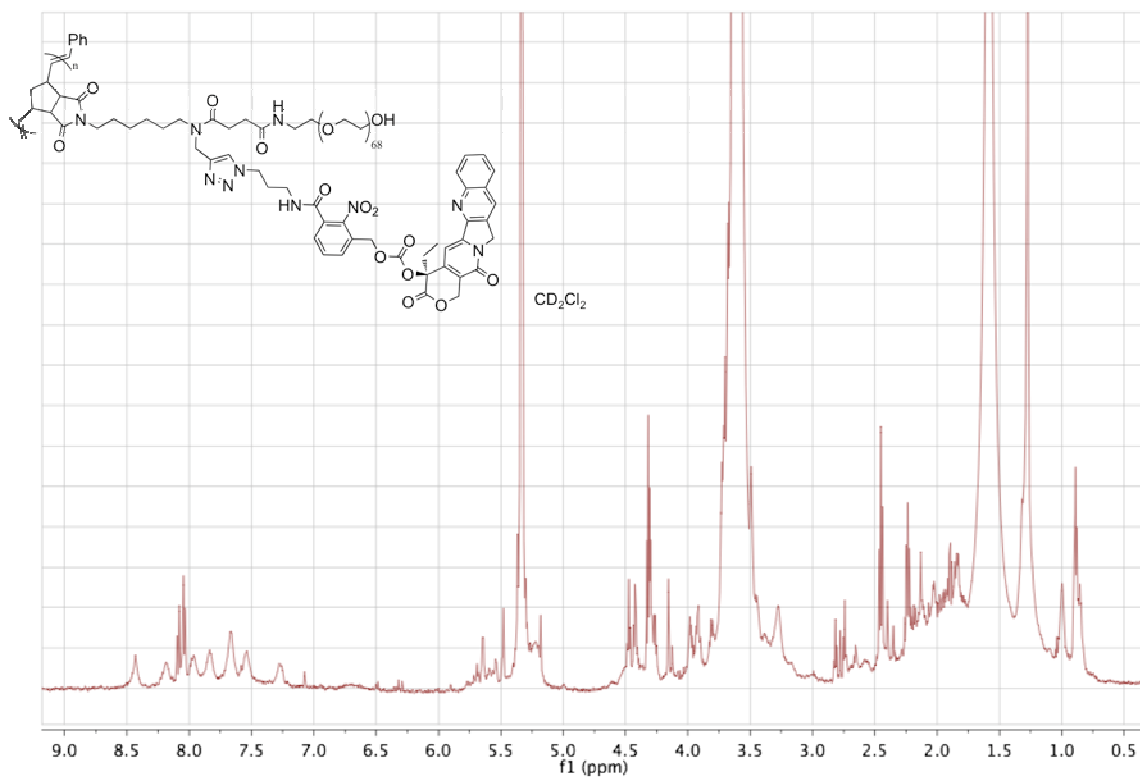


Figure S8. 600 MHz ¹H NMR spectrum of pCT in CD₂Cl₂ immediately after ROMP.

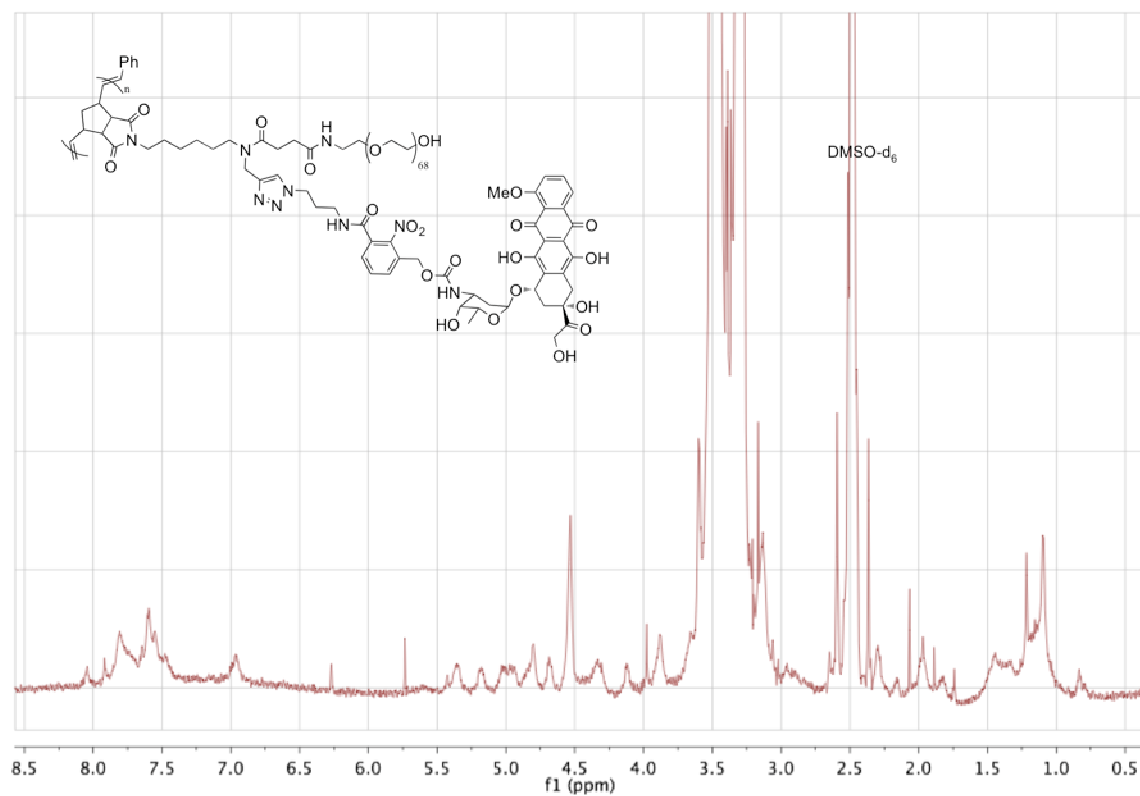


Figure S9. 600 MHz ^1H NMR spectrum of **pDOX03** in DMSO-d_6 immediately after ROMP.

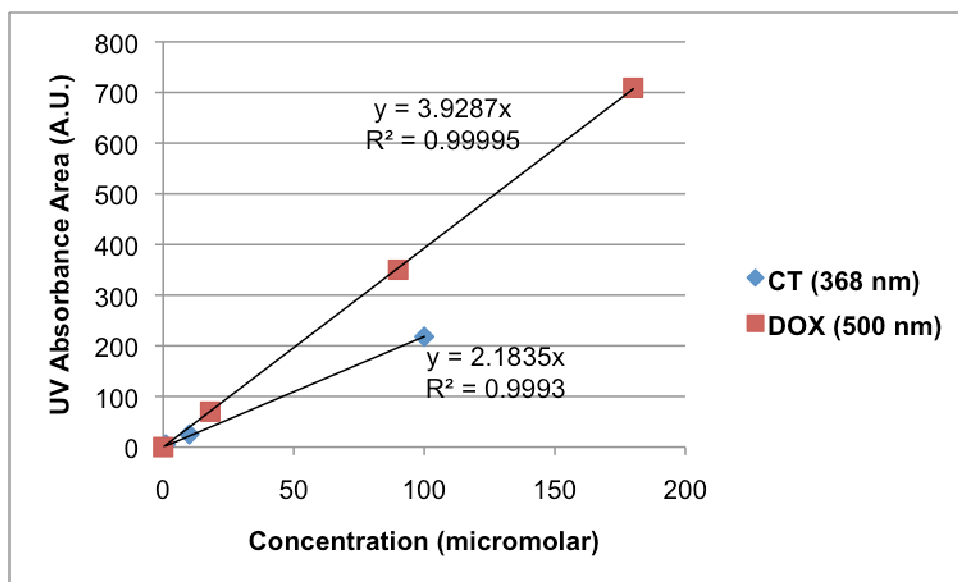


Figure S10. LC calibration curves for **DOX** and **CT**.