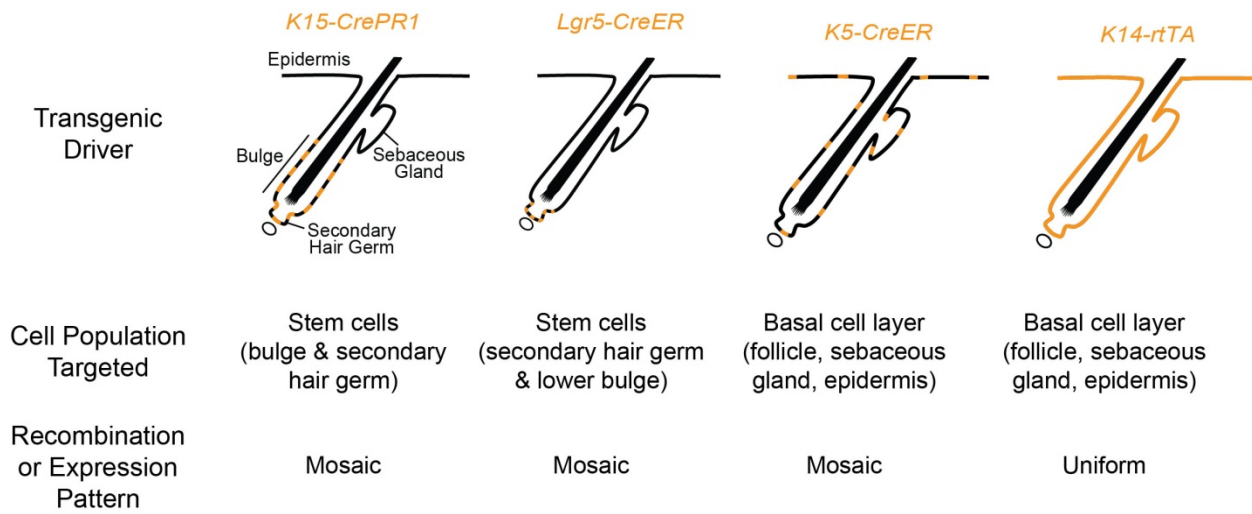
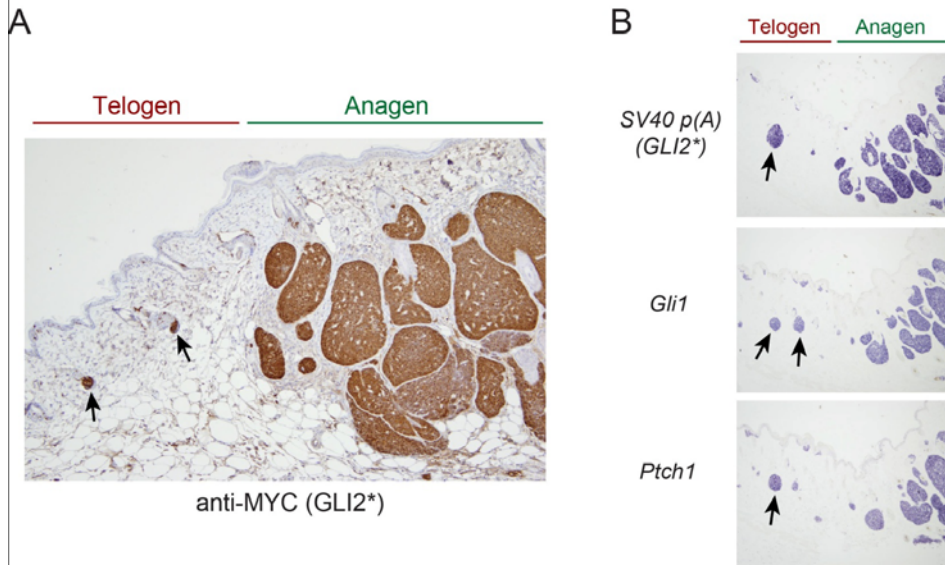


Supplemental Figure 1



Supplemental Figure 1. Transgenic mouse strains and predicted cell populations in skin that are targeted in this study.

Supplemental Figure 2



Supplemental Figure 2. BCC-like tumors arising in telogen versus anagen hair follicles have comparable expression levels of GLI2* and Hh/Gli target genes. A) MYC immunostaining for GLI2* transgene product shows comparable expression levels in tumor masses arising in depilated (anagen) skin, and in microscopic tumors (arrows) arising in adjacent non-depilated (telogen) dorsal skin. B) *In situ* hybridization using riboprobes to detect *GLI2** and Hh target genes reveals similar expression levels in microscopic telogen tumors (arrows) and large anagen tumors arising in depilated skin. Original magnification, 200x (A and B).