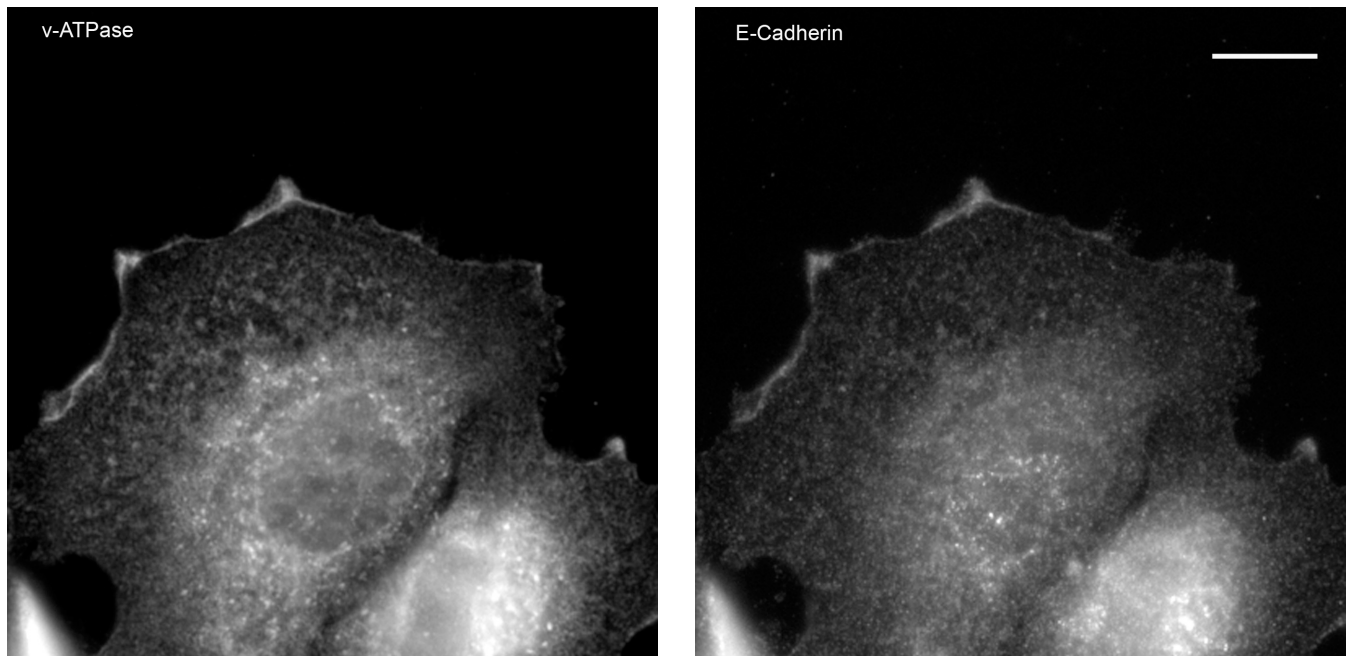


## The vacuolar-ATPase (V-ATPase) modulates matrix metalloproteinase (MMP) isoforms in human pancreatic cancer

Chuhan Chung, Christopher C Mader, John Schmitz, Jorunn Atladottir, Phillip Fitchev, Mona Cornwell, Anthony J Koleske, Susan Crawford, Fred Gorelick



**Supplementary Figure 2.** Labeling of the v-ATPase  $V_1E$  subunit demonstrates localization with the cell surface marker E-cadherin in Panc-1 cells. Stains for  $V_1E$  (left) demonstrate focal areas of labeling at the leading edge. E-cadherin labeling (right) demonstrates corresponding areas of  $V_1E$  localization and additional staining in the nucleus.