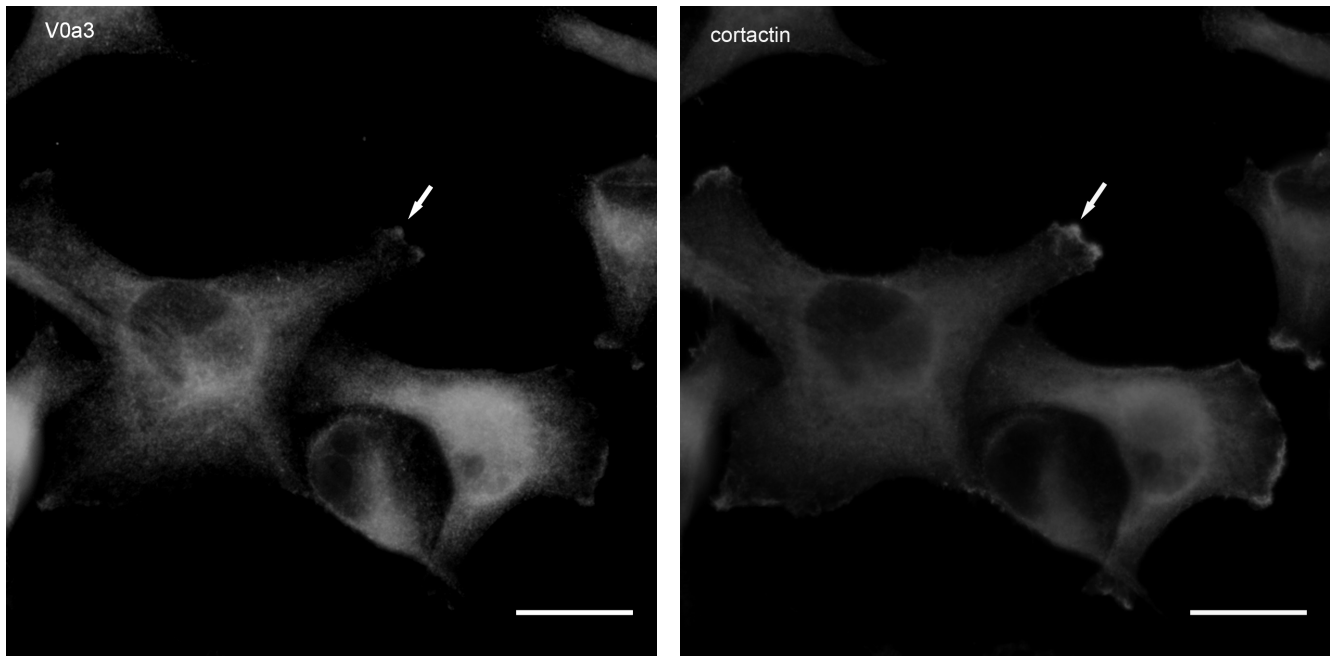


**The vacuolar-ATPase (V-ATPase) modulates matrix metalloproteinase (MMP) isoforms
in human pancreatic cancer**

Chuhan Chung, Christopher C Mader, John Schmitz, Jorunn Atladottir, Phillip Fitchev, Mona Cornwell, Anthony J Koleske, Susan Crawford, Fred Gorelick



Supplementary Figure 3. Immuno-staining of the v-ATPase V_{0a3} subunit (left, arrow) demonstrates localization with cortactin (right, arrow) at the leading edge of Panc-1 cells.