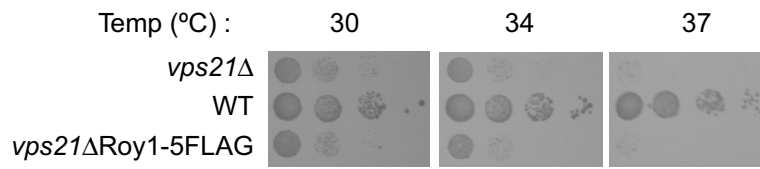


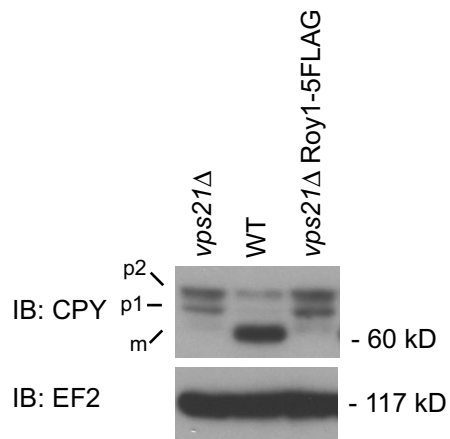
Supplemental Figure legend

Figure S1. Roy1-5FLAG was functionally active concerning temperature-sensitive growth and CPY sorting. (A) The indicated yeast cells were grown to exponential phase in YPD medium. Cells were harvested and resuspended in YPD medium. 3 μ l of 10-fold serial dilutions was spotted onto YPD plates, incubated for 36 hours at the indicated temperature, and photographed. (B) The indicated yeast cells were harvested and lysed by the TCA lysis method. Extracts were subjected to IB with indicated antibodies.

A



B



Liu_Figure S1

Supplemental Table S1. Yeast strains used in this study

Strains	Relevant genotype	Source
L40	<i>MATa, LYS2::lexA-HIS3, URA3::lexA-lacZ, trp1, leu2, his3</i>	Invitrogen
W303-1A	<i>MATa, can1-100, leu2-3,-112, his3- 11,-15, trp1-1, ura3-1, ade2-1</i>	Y. Kikuchi
MTY1849	W303-1A, <i>MATa, skp1-11</i>	M. Tyers
TK601	W303-1A, <i>MATa, pdr5::HPH, ROY1-(5FLAG)::KAN</i>	This study
TK1268	W303-1A, <i>MATa, pdr5::HPH, roy1::KAN</i>	This study
TK1269	W303-1A, <i>MATa, pdr5::HPH, ypt52::HIS3</i>	This study
TK1270	W303-1A, <i>MATa, pdr5::HPH, vps21::TRP1</i>	This study
TK1271	W303-1A, <i>MATa, pdr5::HPH, roy1::KAN, ypt52::HIS3</i>	This study
TK1272	W303-1A, <i>MATa, pdr5::HPH, roy1::KAN, vps21::TRP1</i>	This study
TK1273	W303-1A, <i>MATa, pdr5::HPH, ypt52::HIS3, vps21::TRP1</i>	This study
TK1274	W303-1A, <i>MATa, pdr5::HPH, roy1::KAN, ypt52::HIS3, vps21::TRP1</i>	This study
TK1288	W303-1A, <i>MATa, pdr5::HPH, vps21::TRP1, URA3::YPT52</i>	This study
TK1289	W303-1A, <i>MATa, pdr5::HPH, vps21::TRP1, URA3::YPT52-YPT52</i>	This study
TK1393	W303-1A, <i>MATa, pdr5::HPH, roy1::KAN, vps21::TRP1, vps9::LEU2</i>	This study
TK1396	W303-1A, <i>MATa, pdr5::HPH, VPS9-(3HA)::LEU2</i>	This study
TK1397	W303-1A, <i>MATa, pdr5::HPH, roy1::KAN, URA3::GAL1</i>	This study
TK1398	W303-1A, <i>MATa, pdr5::HPH, roy1::KAN, URA3::GAL1-ROY1-(5FLAG)</i>	This study
TK1399	W303-1A, <i>MATa, pdr5::HPH, roy1::KAN, URA3::GAL1-ROY1 1-452 (a.a.) -(5FLAG)</i>	This study
TK1400	W303-1A, <i>MATa, pdr5::HPH, roy1::KAN, URA3::GAL1-ROY1 1-352 (a.a.) -(5FLAG)</i>	This study
TK1401	W303-1A, <i>MATa, pdr5::HPH, roy1::KAN, URA3::GAL1-ROY1 1-252 (a.a.) -(5FLAG)</i>	This study
TK1402	W303-1A, <i>MATa, pdr5::HPH, roy1::KAN, URA3::GAL1-ROY1 43-554 (a.a.) -(5FLAG)</i>	This study
TK1403	W303-1A, <i>MATa, skp1-11, ROY1-(5FLAG)::KAN</i>	This study
TK1404	W303-1A, <i>MATa, pdr5::HPH, ypt52::HIS3, ROY1-(5FLAG)::KAN</i>	This study
TK1405	W303-1A, <i>MATa, pdr5::HPH, UFO1-(5FLAG)::KAN</i>	This study
TK1406	W303-1A, <i>MATa, pdr5::HPH, roy1::KAN, vps21::TRP1, URA3::GAL1</i>	This study
TK1407	W303-1A, <i>MATa, pdr5::HPH, roy1::KAN, vps21::TRP1, URA3::GAL1-ROY1</i>	This study
TK1411	W303-1A, <i>MATa, pdr5::HPH, roy1::KAN, vps21::TRP1, URA3::GAL1-ROY1 43-554 (a.a.)</i>	This study
TK1455	W303-1A, <i>MATa, pdr5::HPH, pep12::LEU2</i>	This study
TK1457	W303-1A, <i>MATa, pdr5::HPH, roy1::KAN, pep12::LEU2</i>	This study