

Supporting Information

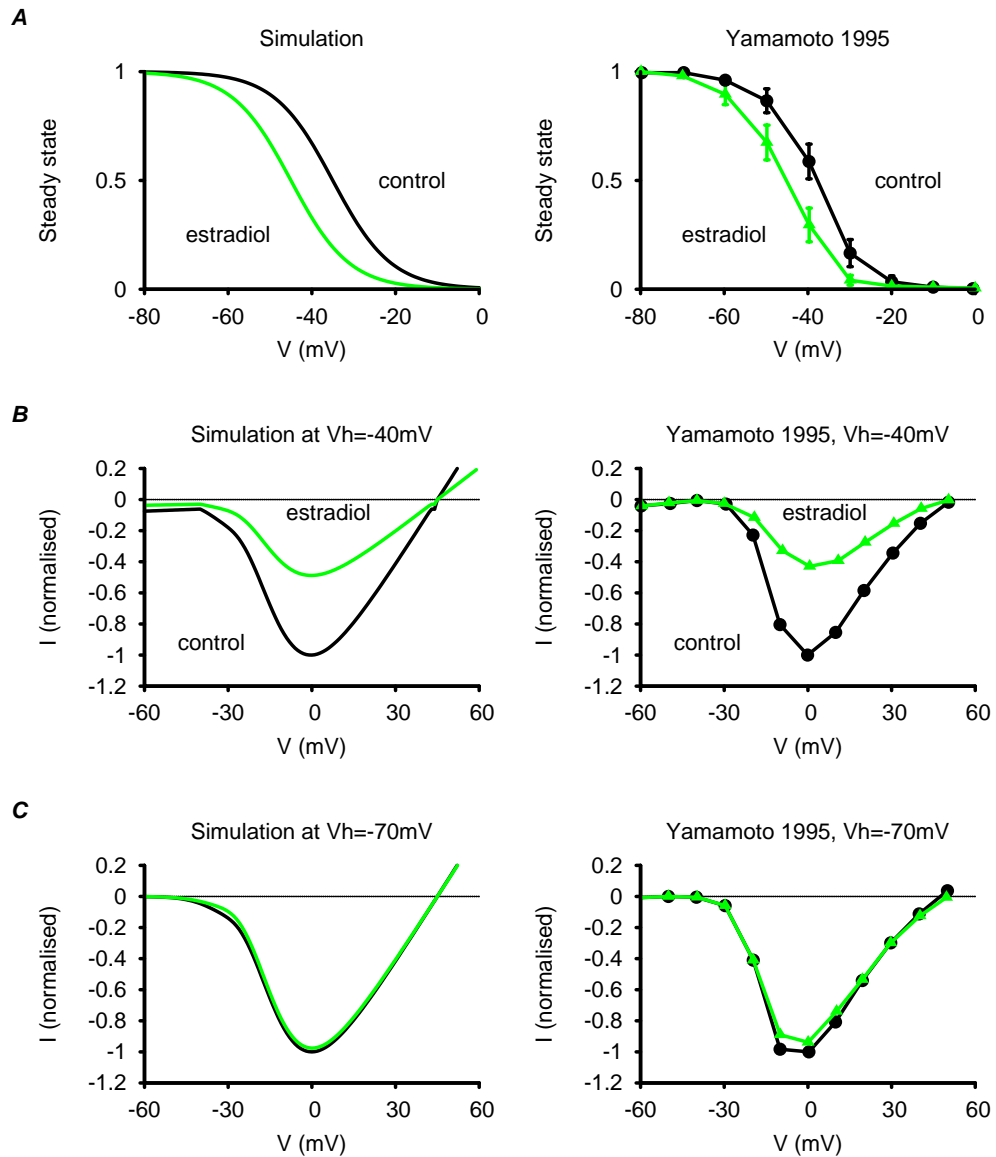


Figure S1. Simulating the effect of estradiol on the inactivation of myometrial I_{CaL} .

Simulations (left panels) reproduced the experimental data (right panels, [30]) indicating that estradiol effects a leftward shift in voltage-dependent inactivation and a reduction in peak current-voltage (I - V) relationship from a holding potential (V_h) of -40mV . I_{CaL} in control conditions (*black*) and I_{CaL} in estradiol conditions (*green*). *A*, inactivation steady-states of I_{CaL} ; *B*, I - V relationship from $V_h = -40\text{mV}$; *C*, I - V relationship from $V_h = -70\text{mV}$.