

Manuscript Title

Fetal exposure to chlordane and permethrin mixtures in relation to inflammatory cytokines and birth outcomes

Authors

Gila Neta, Lynn R. Goldman, Dana Barr, Benjamin J. Apelberg, Frank R. Witter, Rolf U. Halden

Supporting Information

Pages: 7

Table S1 (page S2)

Table S2 (page S3)

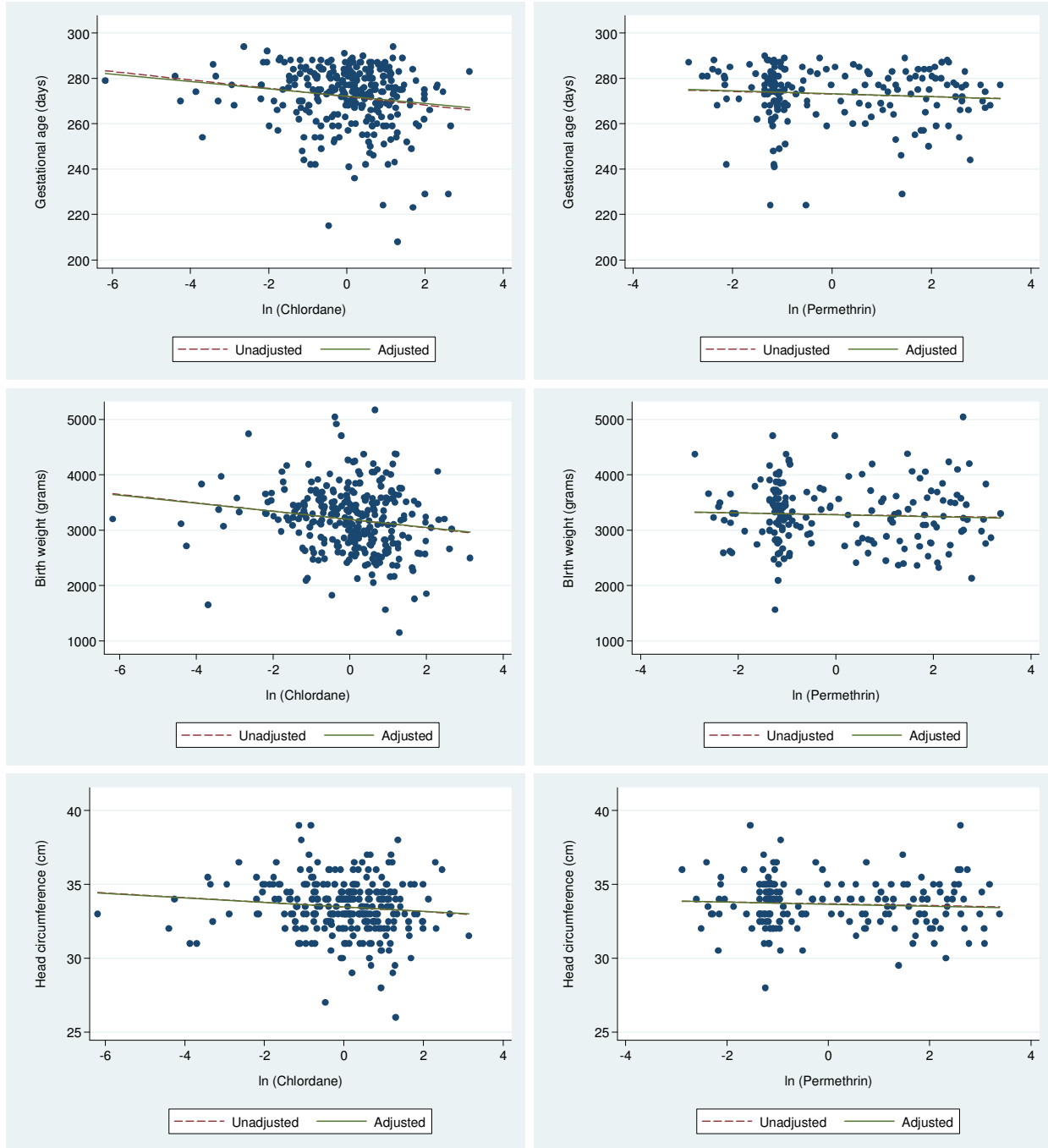
Figure S1 (pages S4-S5)

Figure S2 (pages S6-S7)

Table S1: Demographic characteristics of the THREE study population (2004-2005) in comparison with the Johns Hopkins Hospital Labor and Delivery Suite population (2001) and the state of Maryland (2001).

Characteristics	THREE (%)	JHH (%)	Maryland (%)
African-American	68.9	70.2	33.0
Maternal age <18	8.5	9.3	3.6
Maternal education <12 yrs	29.1	32.0	13.3
Births to unmarried women	66.0	64.4	34.6
Late or no prenatal care	9.1	9.8	3.3
Parity 4+	5.9	17.7	10.2
Plural births	0.0	4.9	3.6
Low birth weight (<2500 g)	12.3	20.5	8.9
Premature births (<37 weeks)	14.7	23.5	10.9

Figure S1: Unadjusted and adjusted linear predictions for gestational age, birth weight and birth size parameters with normalized chlordane and permethrin components



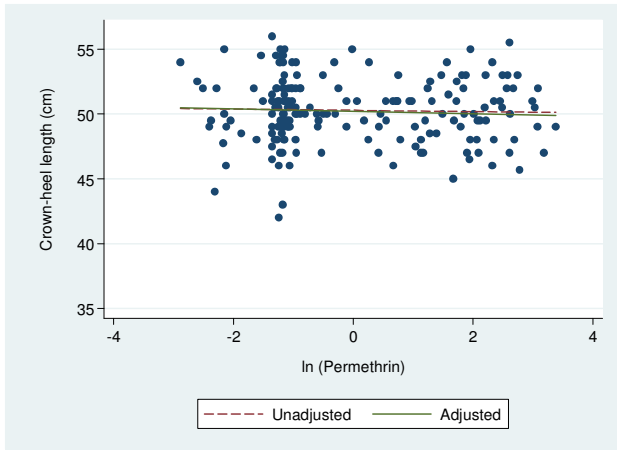
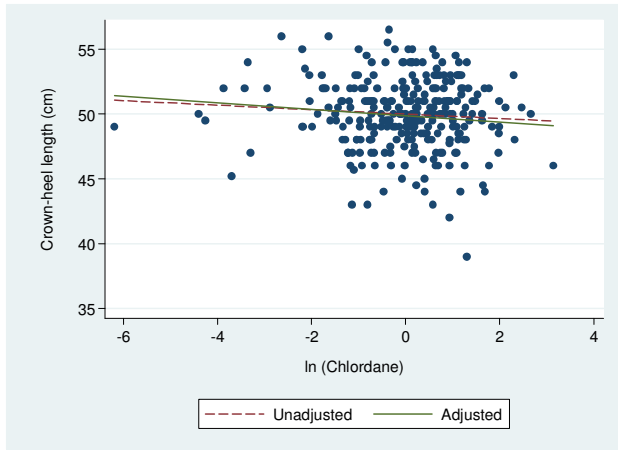
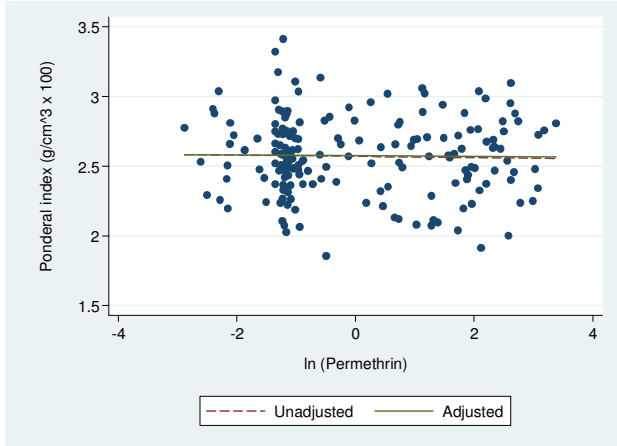
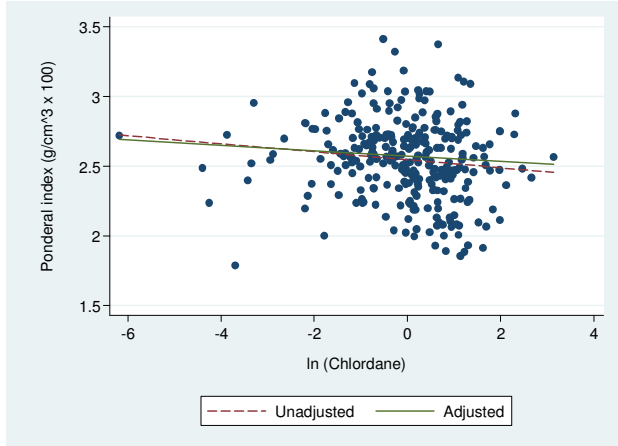


Figure S2: Unadjusted and adjusted linear predictions for anti-inflammatory, IL-1 β , acute phase reaction, and other cytokine components with normalized chlordane and permethrin components

