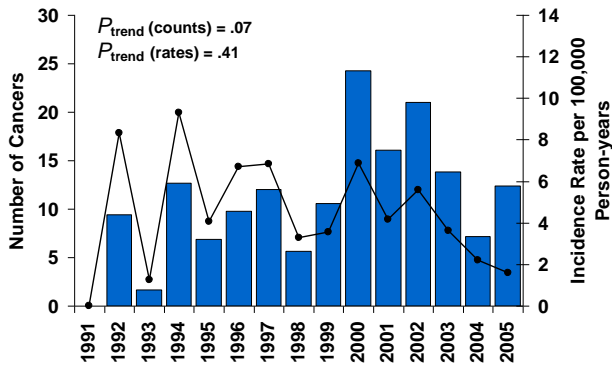
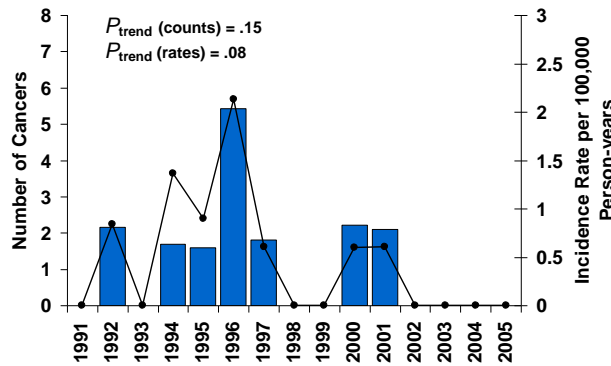


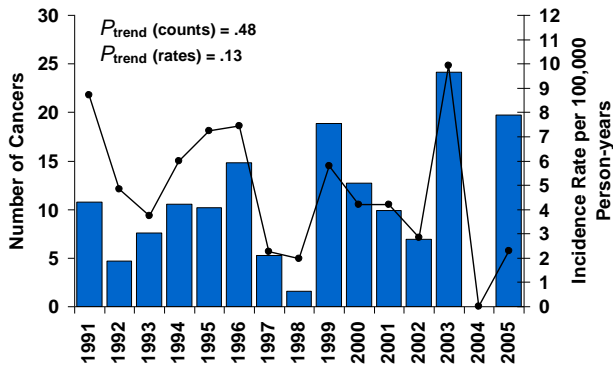
Bladder Cancer



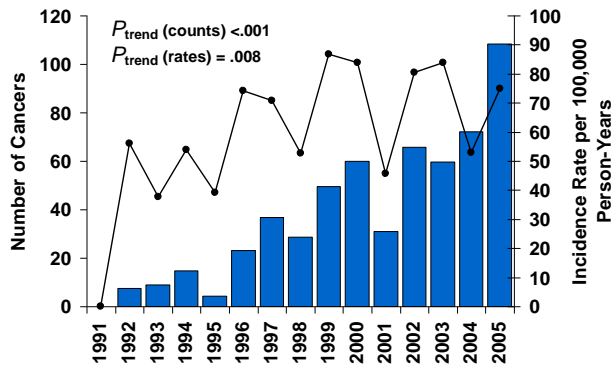
Bone Cancer



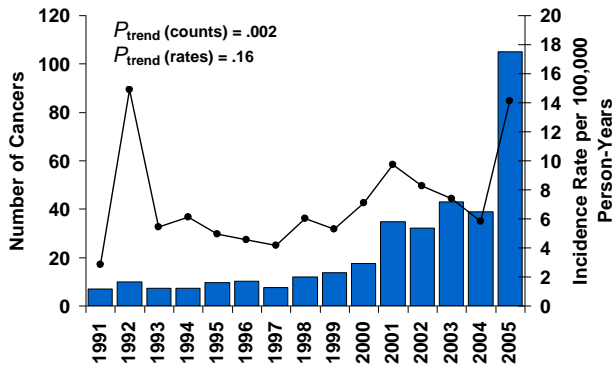
Brain Cancer



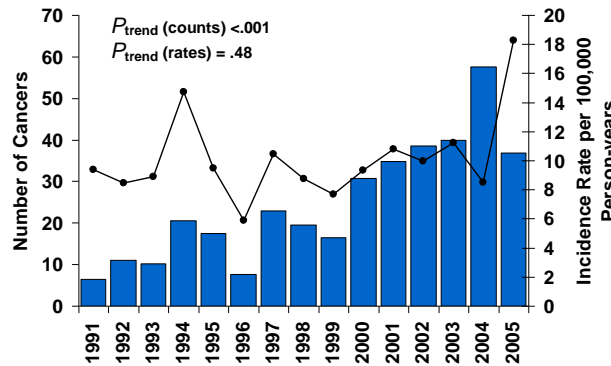
Breast Cancer



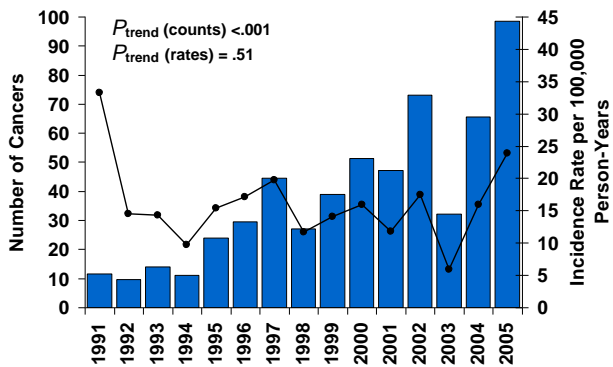
Esophageal Cancer



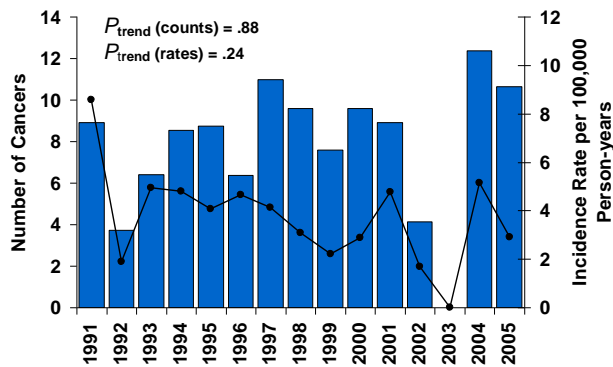
Kidney Cancer



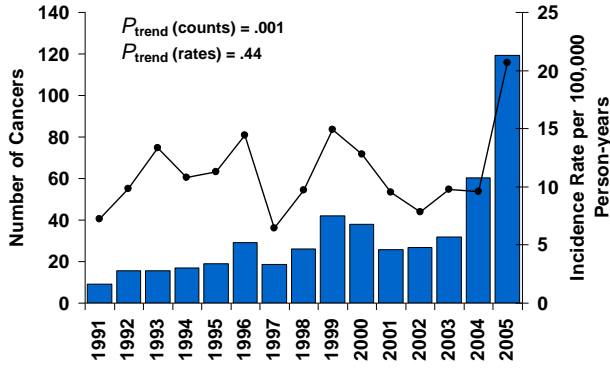
Larynx Cancer



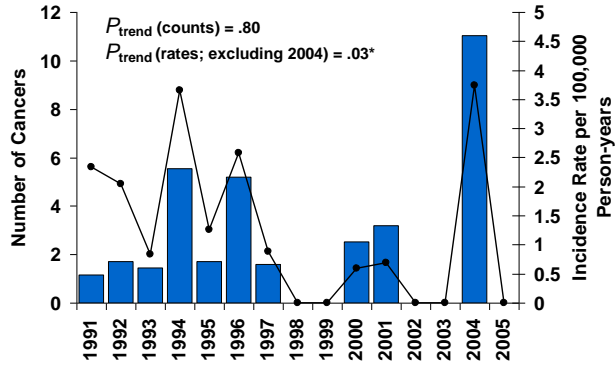
Lymphocytic Leukemia



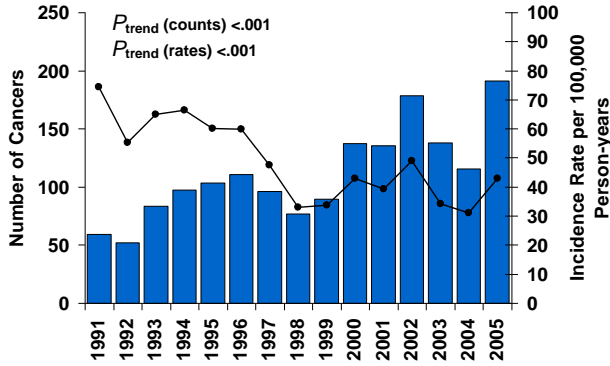
Melanoma



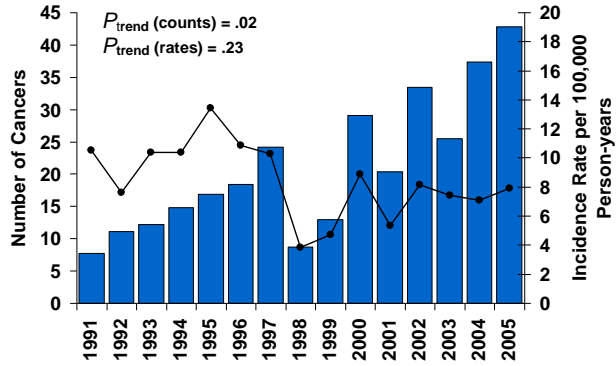
Mesothelioma



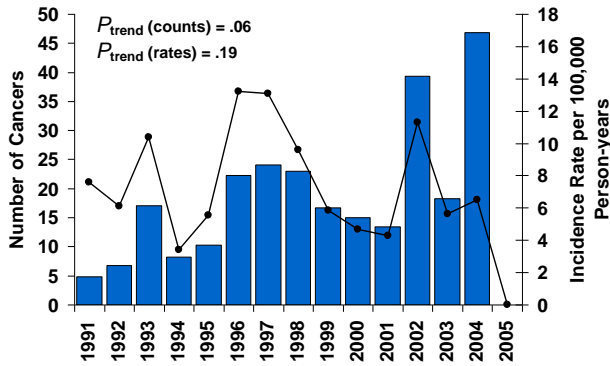
Miscellaneous Cancer



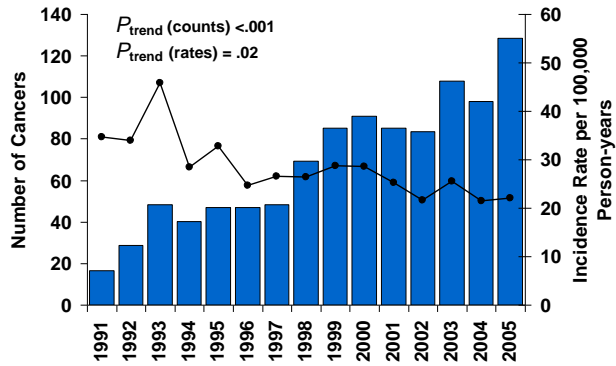
Myeloma



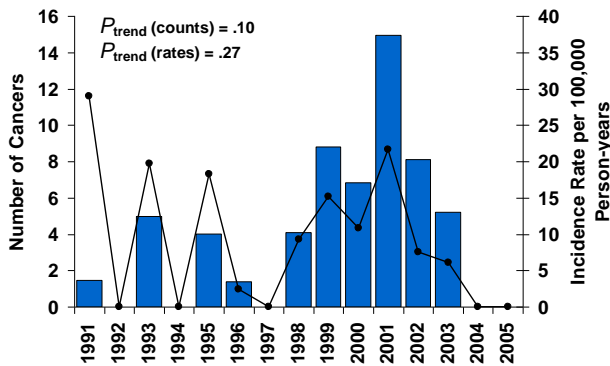
Myeloid and Monocytic Leukemia



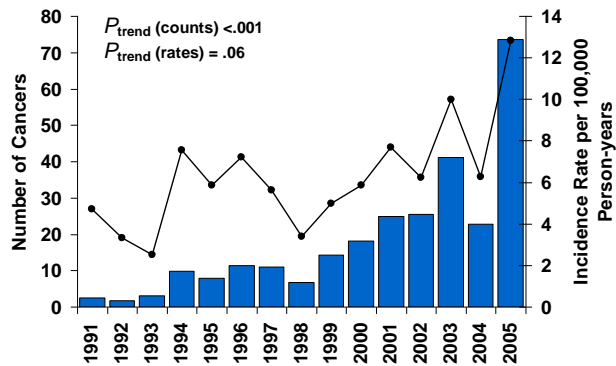
Oral and Pharynx Cancer



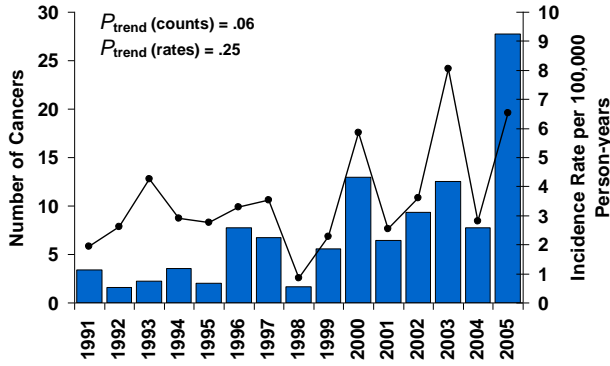
Ovarian Cancer



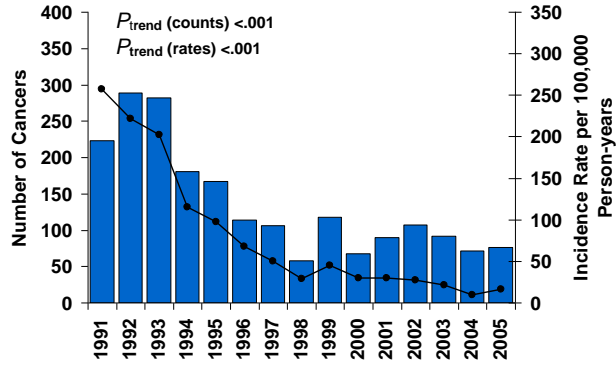
Pancreatic Cancer



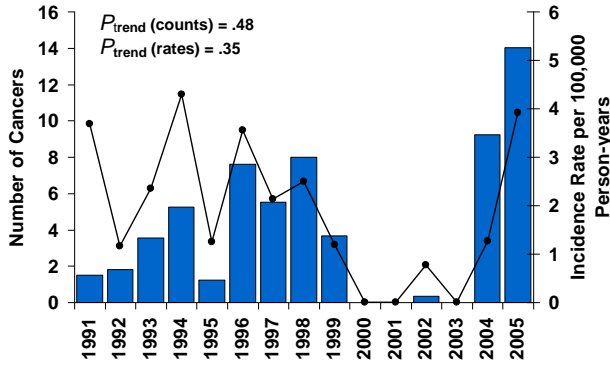
Penis Cancer



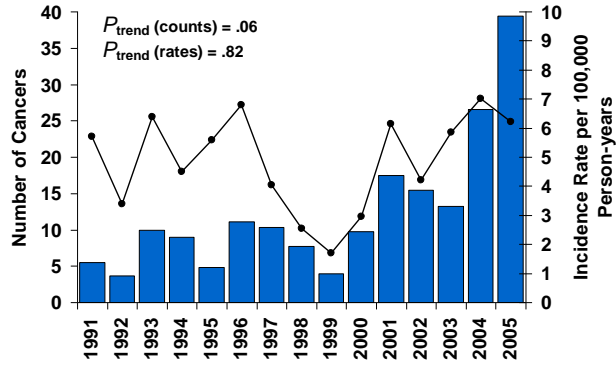
Poorly Specified Cancers



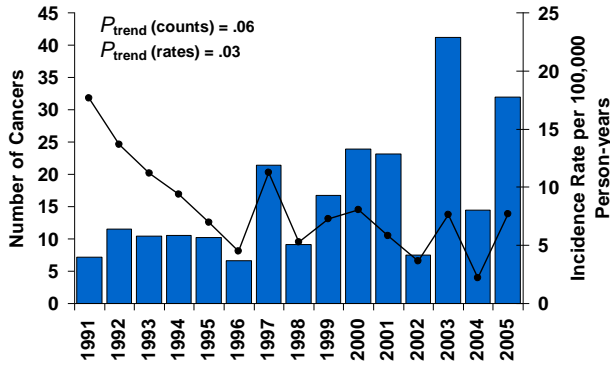
Small Intestine Cancer



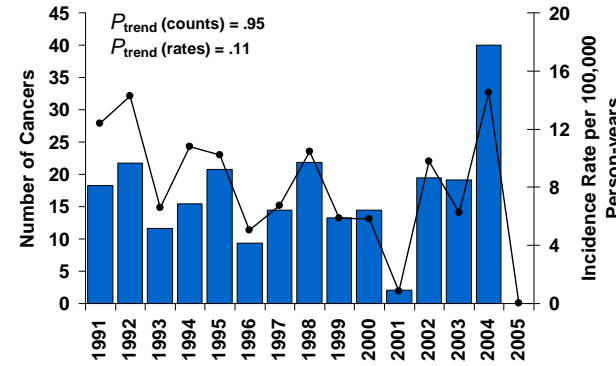
Soft Tissue including Heart Cancer



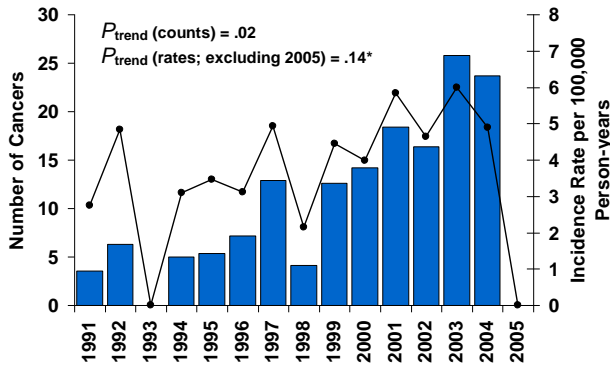
Stomach Cancer



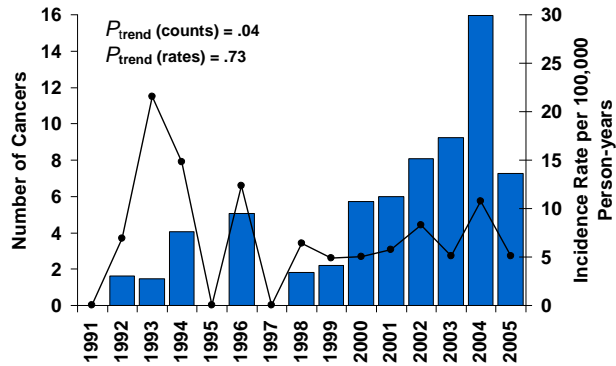
Testicular Cancer

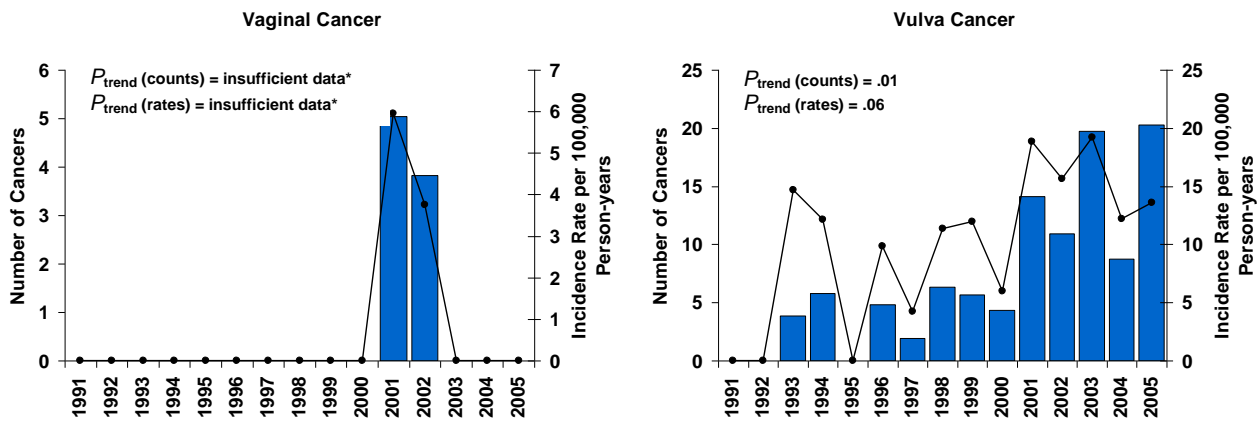


Thyroid Cancer



Uterine Corpus Cancer





Supplementary Figure 1. Burden of selected malignancies among people living with AIDS in the United States (1991–2005). The counts and standardized incidence rates of 26 additional cancers among people living with AIDS in the US, by calendar year, during 1991–2005. Bars depict the number of cancers, and points connected by lines depict incidence rates standardized to the 2000 US AIDS population by age, sex and race. Two-sided P values for trends in cancer counts and cancer rates were calculated with the chi-square test using linear regression models. Rates for breast, ovary, uterine corpus, vagina and vulva cancers were restricted to women. Rates for penile and testicular cancers were restricted to men. *The limited data on vaginal cancer prohibited the calculation of a P value for trend in cancer counts or rates. The rates for both mesothelioma and thyroid cancer were not normally distributed. After visual inspection of the graphs, we excluded 2004 when we estimated the trend in rates for mesothelioma and 2005 when we estimated the trend in rates for thyroid cancer, as we considered these rates to be outliers.