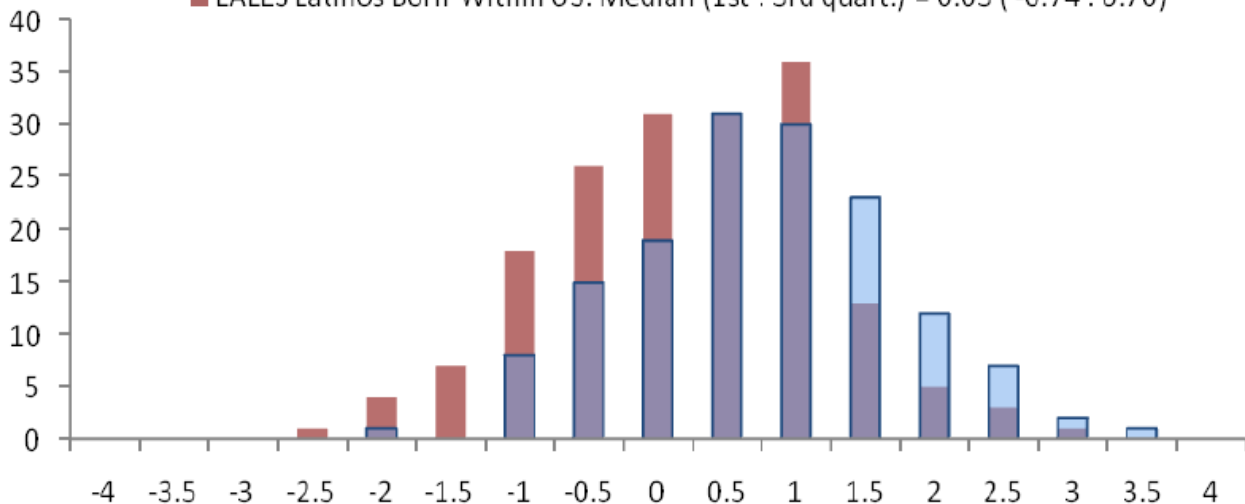


■ LALES Latinos Born Outside US: Median (1<sup>st</sup> : 3<sup>rd</sup> quart.) = 0.52 (-0.09 : 1.15)<sup>n</sup>

■ LALES Latinos Born Within US: Median (1<sup>st</sup> : 3<sup>rd</sup> quart.) = 0.03 (-0.74 : 0.70)



■ MEC Latinos Born Outside US: Median (1<sup>st</sup> : 3<sup>rd</sup> quart.) T = 0.14 (-0.36 : 1.02)

■ MEC Latinos Born Within US: Median (1<sup>st</sup> : 3<sup>rd</sup> quart.) T = -0.09 (-0.66 : 0.52)

