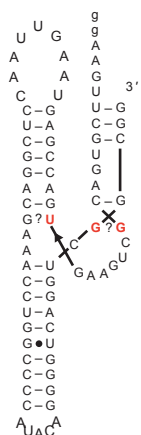
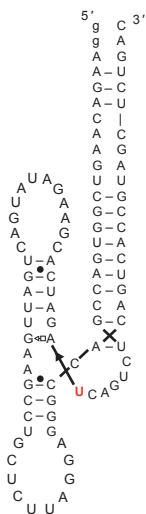


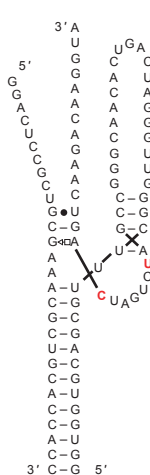
*Xanthomonas*  
phage



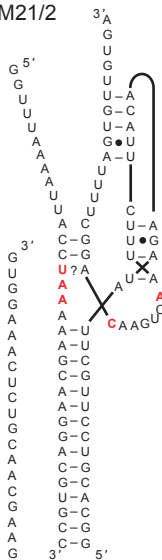
*Aspergillus*



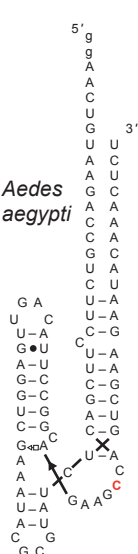
*Renibacterium*  
*salmonirum*



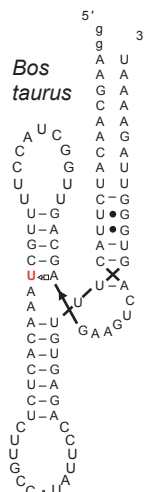
*Faecalibacterium*  
*prauznitzii*  
M21/2



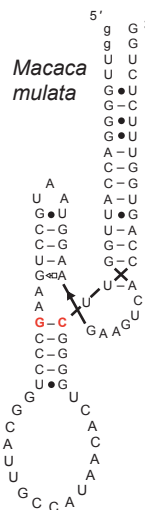
*Aedes*  
*aegypti*



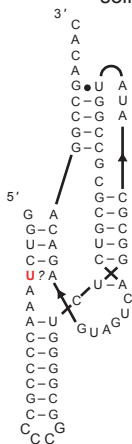
*Bos*  
*taurus*



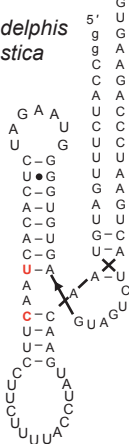
*Macaca*  
*mulata*



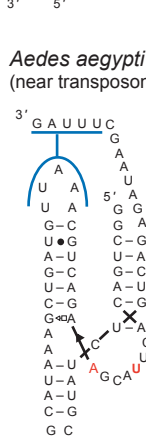
soil metagenomes



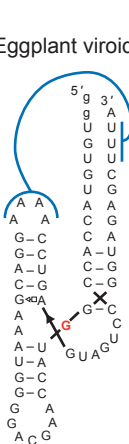
*Monodelphis*  
*domestica*



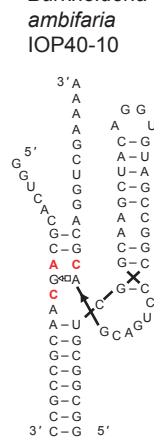
*Aedes aegypti*  
(near transposon)



Eggplant viroid



*Burkholderia*  
*ambifaria*  
IOP40-10



*Yarrowia*  
*lipolytica*

