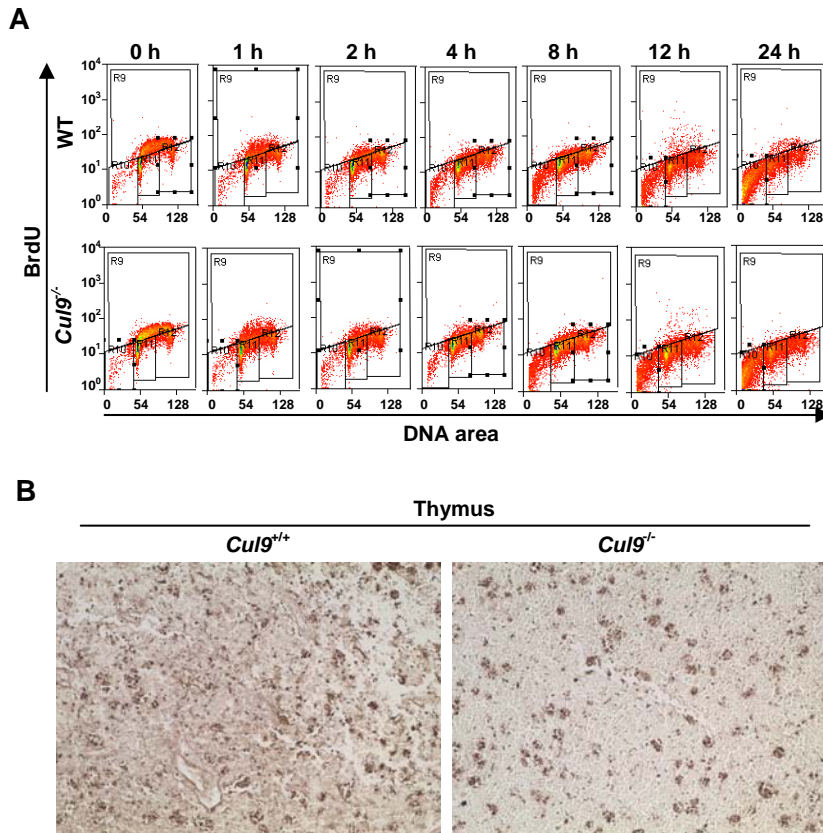


Pei et al. Supplementary Figure S6



Supplementary Figure S6. Disruption of *Cul9* attenuated apoptosis, but did not significantly affect the cell cycle progression of ES cells.

A. *Cul9^{fl/fl}* and *Cul9^{-/-}* ES cells were exposed to 50 J/m² UV irradiation, pulse labeled with 10 μ M BrdU for 1 hour, and harvested at indicated time after UV and stained with anti-BrdU-FITC and PI. The distribution of cells in different phases of the cell cycle is determined by flow cytometry and shown in the table. The quantification of four different cell populations, sub-G1, G1, S and G2/M, are presented in Fig. 4D.

B. Littermate mice at 5 weeks of age were irradiated (10 Gy), 9 hours later, thymus was isolated, fixed and stained with TUNEL.