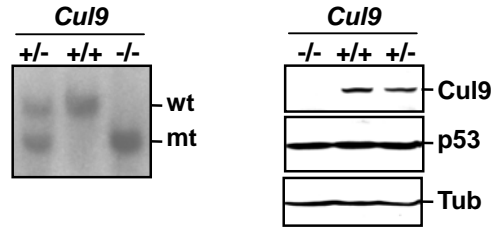
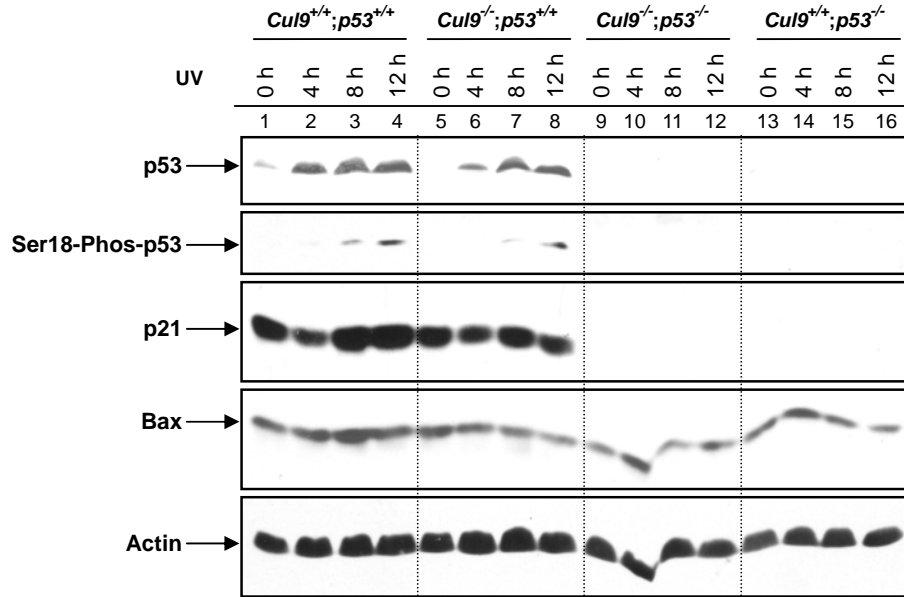


Pei et al. Supplementary Figure S7

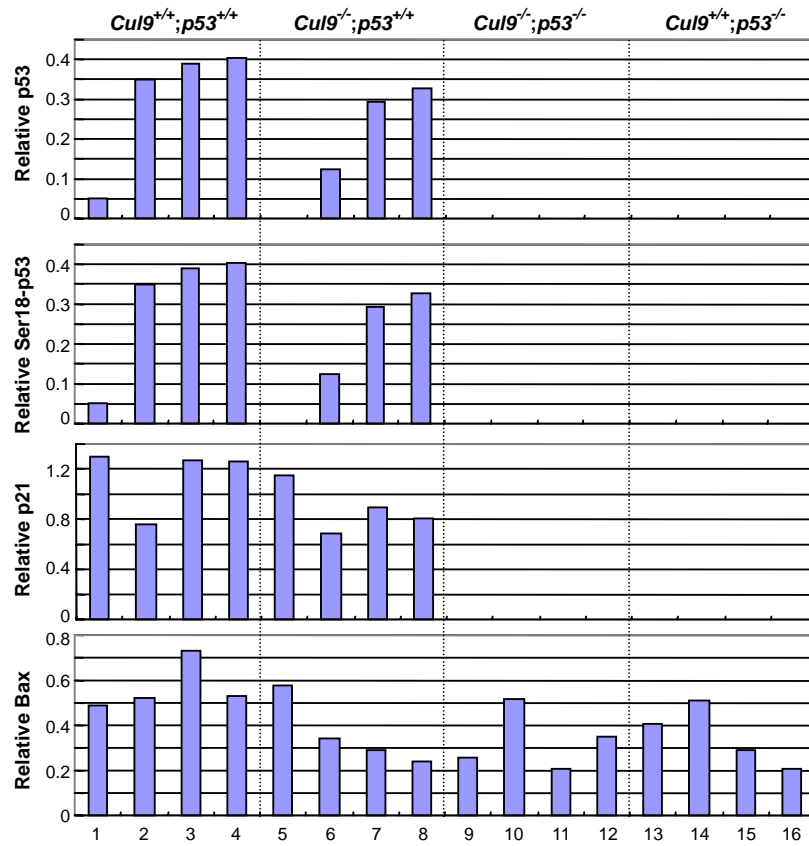
A



B



C



**Supplementary Figure S7.**

**A. Characterization of *Cul9* mt MEFs.** Left panel, genomic DNA isolated from littermate MEFs were digested with Nco1 and hybridized with a *Cul9* probe. Right panel, cell lysates prepared from MEFs were analyzed by western blot.

**B, C. Deletion of *Cul9* reduces the accumulation of p53 and p53 targets genes.**

Total cell lysates were prepared from MEF cells of different genotypes 24 hours after UV irradiation (200 J/m<sup>2</sup>) and separated by SDS-PAGE, followed by direct immunoblotting with indicated antibodies (**B**). Protein levels were quantified using NIH Image (version 1.33U) and relative protein levels were calculated after normalizing against actin (**C**).