

Supporting Information for

Cytotoxic Oleanane-type Saponins from *Albizia inundata*[‡]

Huaping Zhang,[†] Abbas K. Samadi,[‡] Karumanchi V. Rao,[†] Mark S. Cohen[‡], and Barbara N. Timmermann^{*,†}

Department of Medicinal Chemistry, School of Pharmacy, University of Kansas, Lawrence, KS 66045 and Department of Surgery, School of Medicine, University of Kansas Medical Center, Kansas City, KS 66160

[‡]Dedicated to Dr. Koji Nakanishi of Columbia University for his pioneering work on bioactive natural products.

* Author to whom correspondence should be addressed. Tel: (785)864-4844. Fax: (785)864-5326. Email: btimmer@ku.edu. (B. N. T.)

[†] University of Kansas.

[‡] University of Kansas Medical Center.

Table of Contents

S1 Structures of saponins **1-9**

S2 **Table 1** IC₅₀ values of the extracts, fractions and the saponins **1, 3, 6** and **7** against four cancer cell lines

S3 HRESIMS data of **1** and **2**

S4 ¹H NMR spectrum (500 MHz in C₅D₅N) of saponin **1**.

S5 ¹³C NMR and DEPT135 spectra (125 MHz in C₅D₅N) of saponin **1**

S6 ¹H-¹H COSY spectrum of saponin **1**

S7 HSQC spectrum of saponin **1**

S8 HMBC spectrum of saponin **1**

S9 TOCSY spectrum of saponin **1**

S10 ¹H NMR spectrum (500 MHz in C₅D₅N) of saponin **2**

S11 APT ¹³C NMR spectrum of saponin **2**

S12 DQF-COSY spectrum of saponin **2**

S13 HSQC spectrum of saponin **2**

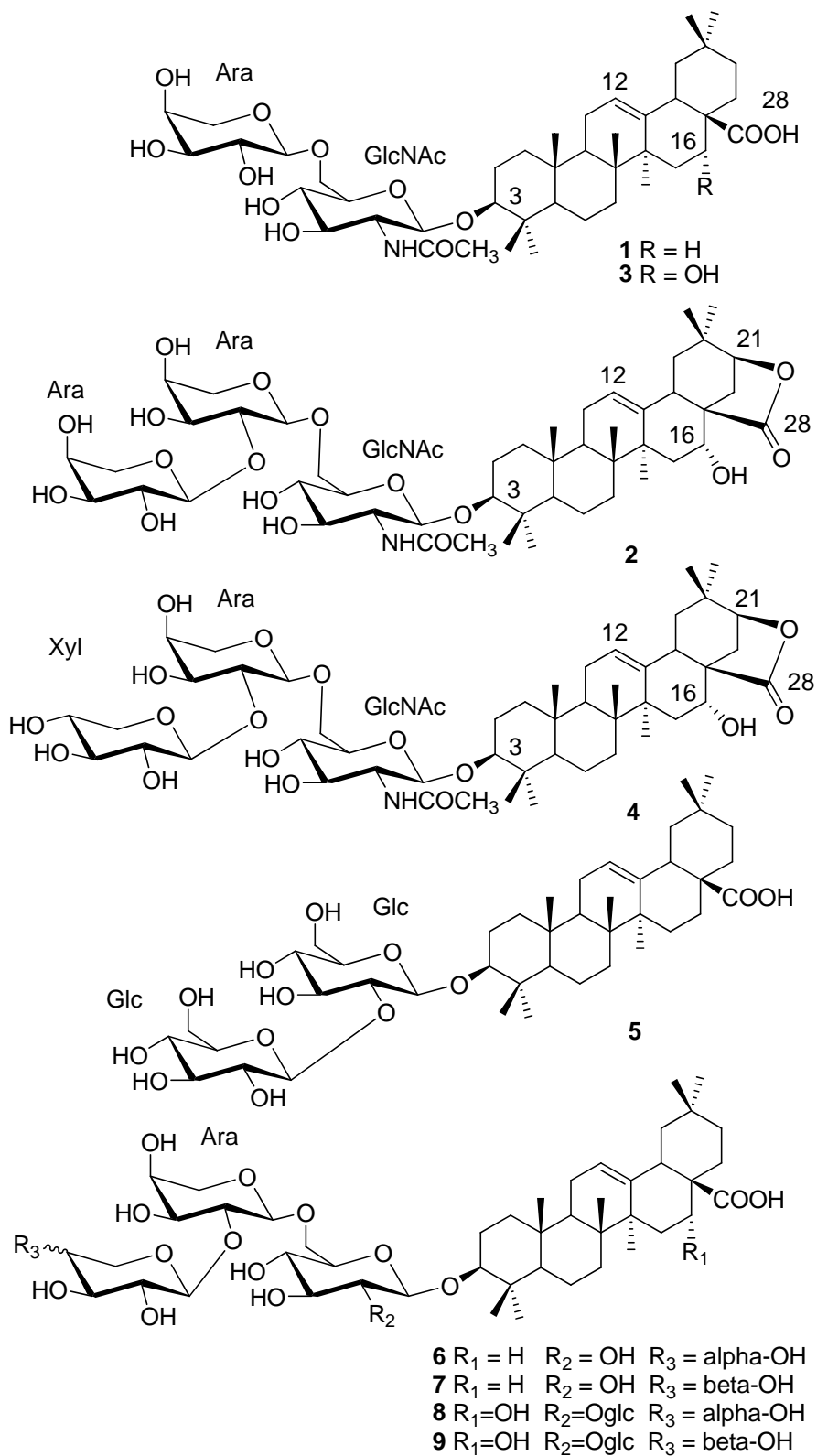
S14 HMBC spectrum of saponin **2**

S15 HSQC-TOCSY spectrum of saponin **2**

S16 ¹H NMR spectrum (500 MHz in C₅D₅N) of saponin **3**

S17 ¹³C NMR and DEPT135 spectra of saponin **3**

S1 Structures of saponins **1-9**



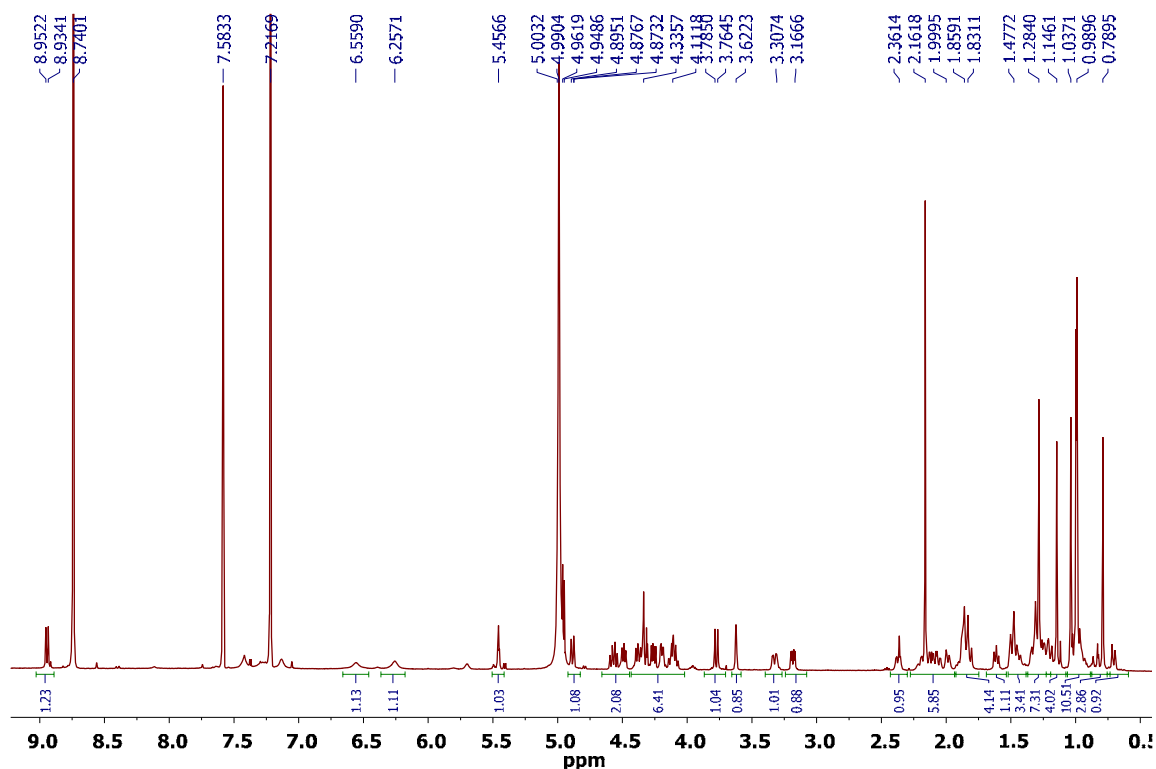
S2 Table 1 IC₅₀ values of the extracts, fractions and the saponins **1**, **3**, **6** and **7** against four cancer cell lines

Extract, fraction or pure saponin	B16F10	JMAR	MDA 1986	SKMEL28
Crude CH ₂ Cl ₂ -MeOH (1:1) extract	3.7 µg/ml	1.1 µg/ml	1.0 µg/ml	3.8 µg/ml
<i>n</i> -BuOH part after partition	1.0 µg/ml	1.0 µg/ml	0.1 µg/ml	1.0 µg/ml
Fraction 5 after MCI CHP20P	0.5 µg/ml	0.1 µg/ml	0.2 µg/ml	0.9 µg/ml
1	4.7 µM	8.7 µM	7.3 µM	12.4 µM
3	5.1 µM	2.8 µM	1.8 µM	9.2 µM
6	6.9 µM	10.1 µM	9.0 µM	8.6 µM
7	6.3 µM	11.5 µM	8.2 µM	8.1 µM

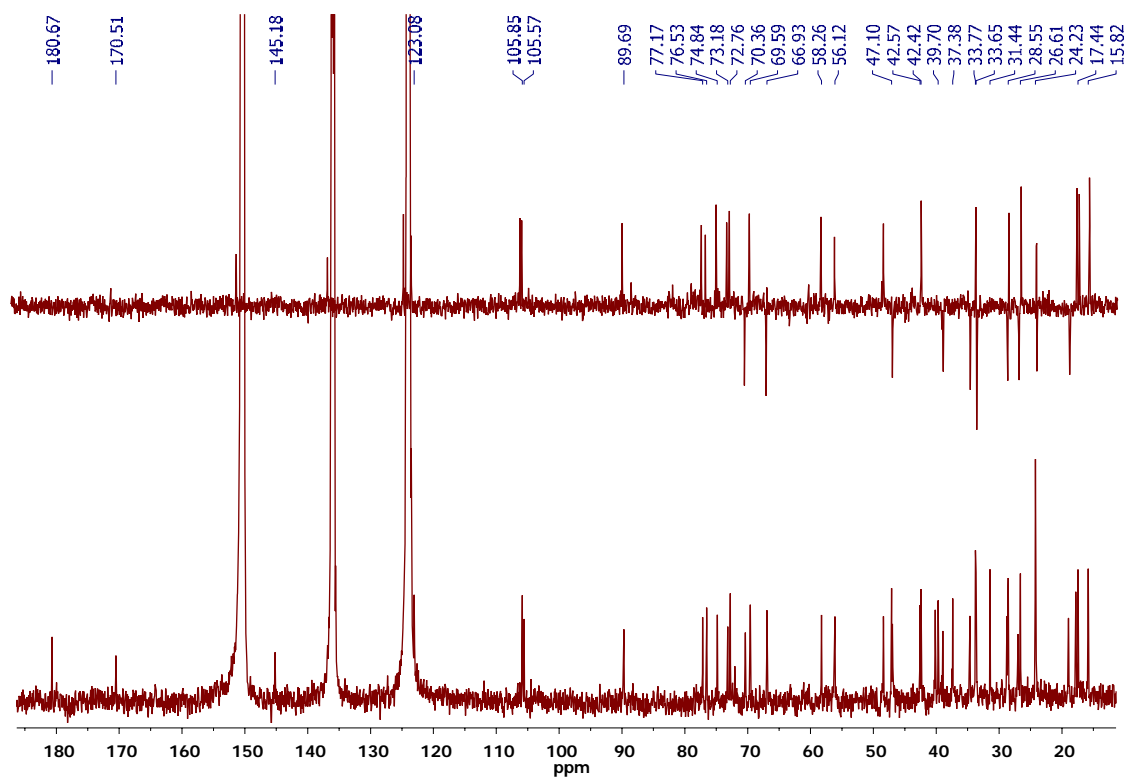
S3 HRESIMS data of 1 and 2

Compound 1		Molecular formula C ₄₃ H ₆₉ NO ₁₂					
Exact Mass [M+H] ⁺	Calcd 792.4898	792.4861	792.4887	792.4877	792.4849	Average 792.48685	SD 0.0016842
ppm error		4.7	1.4	2.6	6.2	3.725	2.14
Extract Mass [M+Na] ⁺	Calcd 814.4717	814.4679	814.4700	814.4725	814.4684	814.4697	0.0020704
ppm error		4.7	2.1	1	4.1	2.975	1.72
Compound 2		Molecular formula C ₄₈ H ₇₅ NO ₁₇					
Exact Mass [M+H] ⁺	Calcd. 938.5113	938.507	938.5038	938.5067	938.507	Average 938.506125	SD 0.0015564
ppm error		4.6	8	4.9	4.6	5.525	1.66
Extract Mass [M+Na] ⁺	Calcd. 960.4933	960.4864	960.4908	960.4897	960.489	980.488975	0.0018697
ppm error		7.2	2.6	3.7	4.5	4.5	1.96

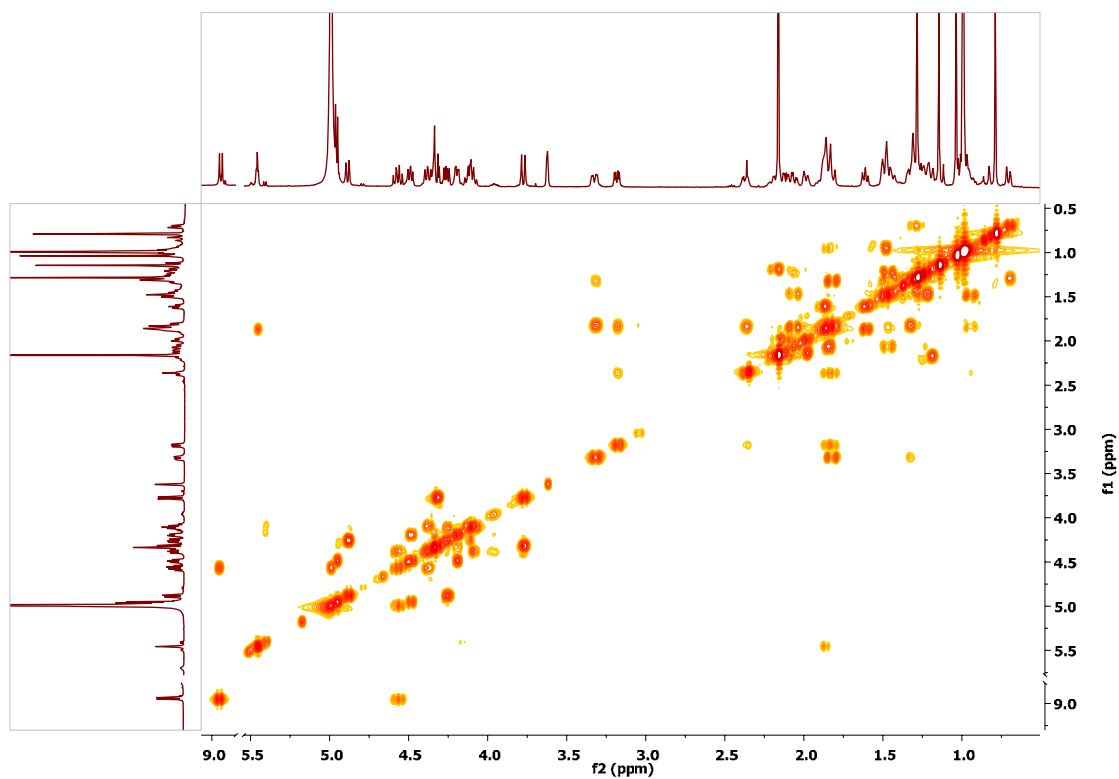
S4 ^1H NMR spectrum (500 MHz in $\text{C}_5\text{D}_5\text{N}$) of saponin **1**



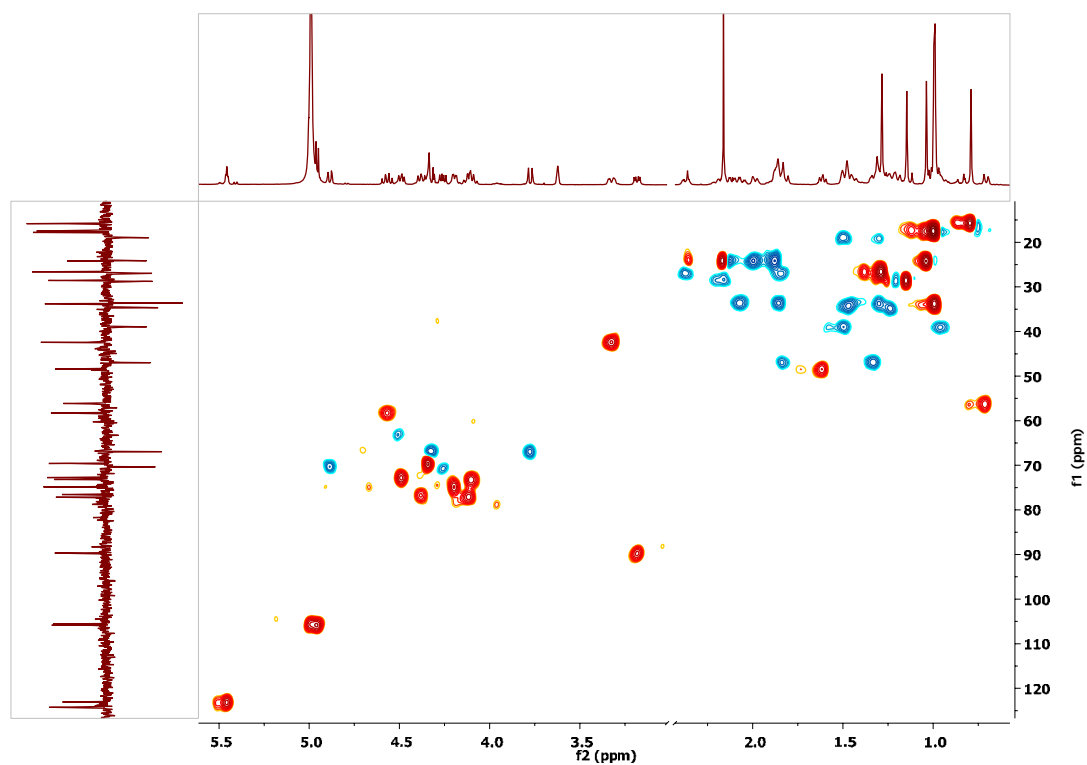
S5 ^{13}C NMR and DEPT135 spectra (125 MHz in $\text{C}_5\text{D}_5\text{N}$) of saponin **1**



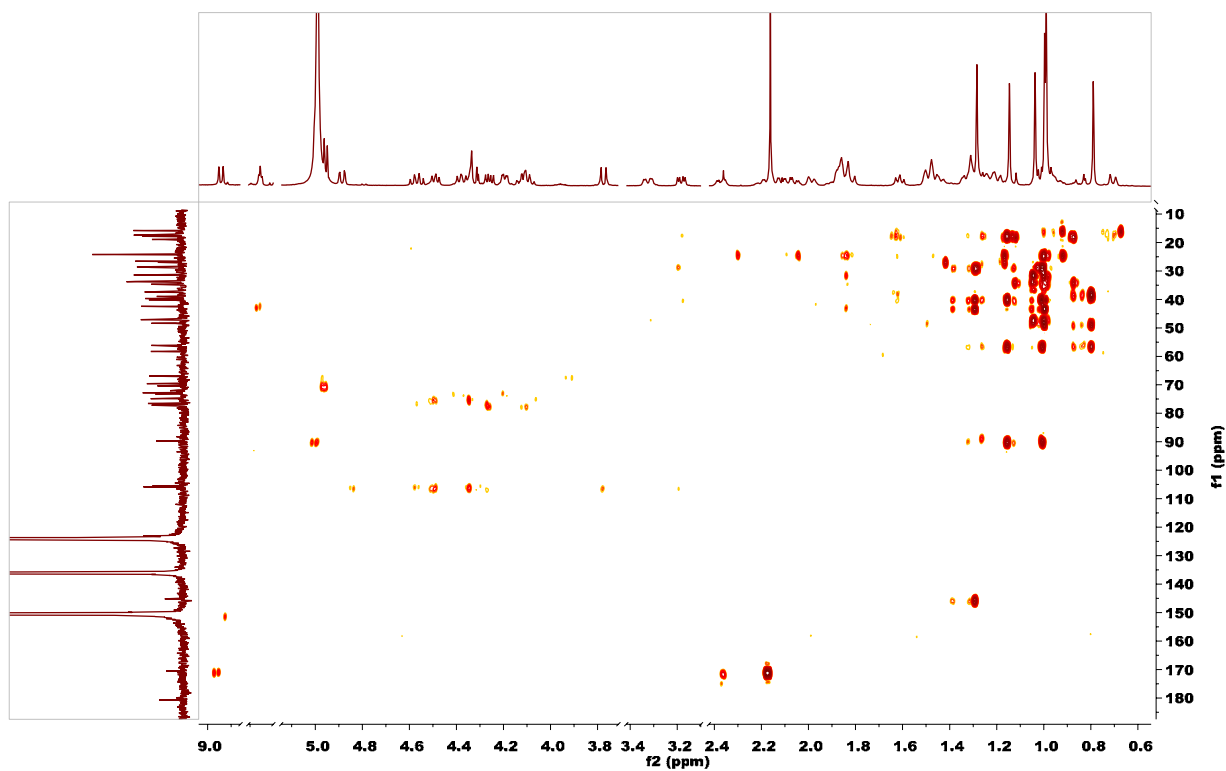
S6 ^1H - ^1H COSY spectrum of saponin **1**



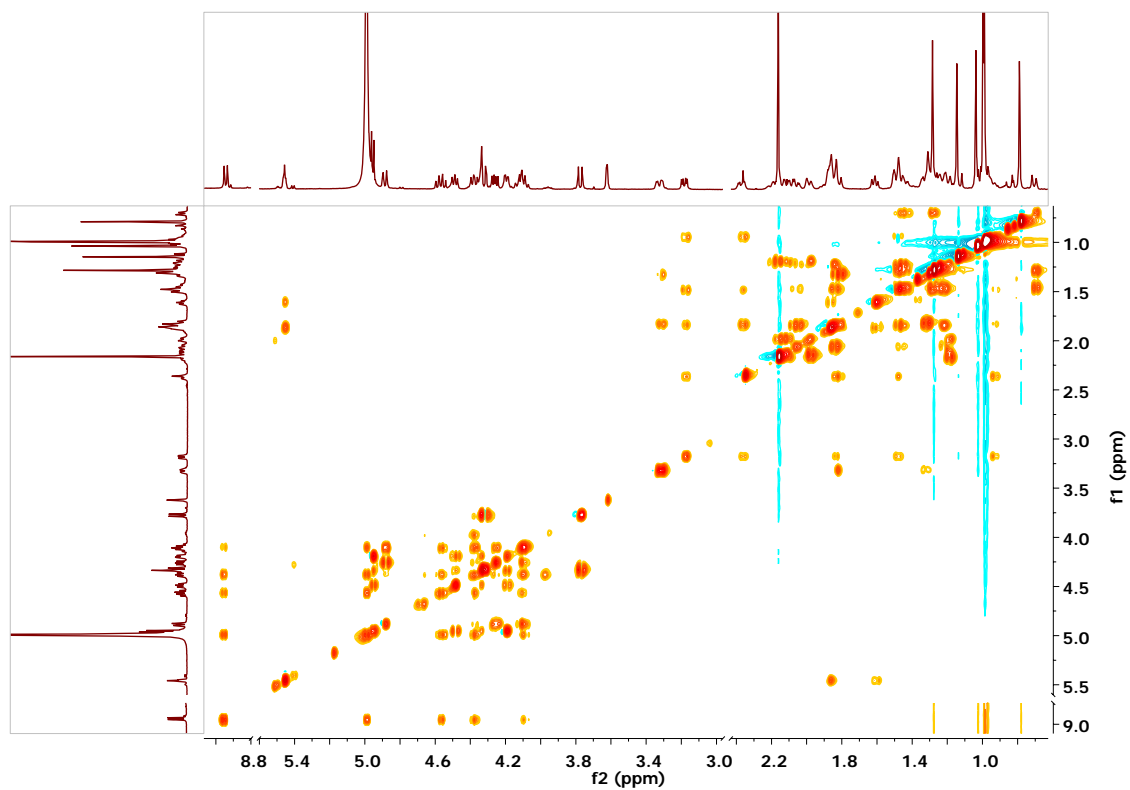
S7 HSQC spectrum of saponin **1**



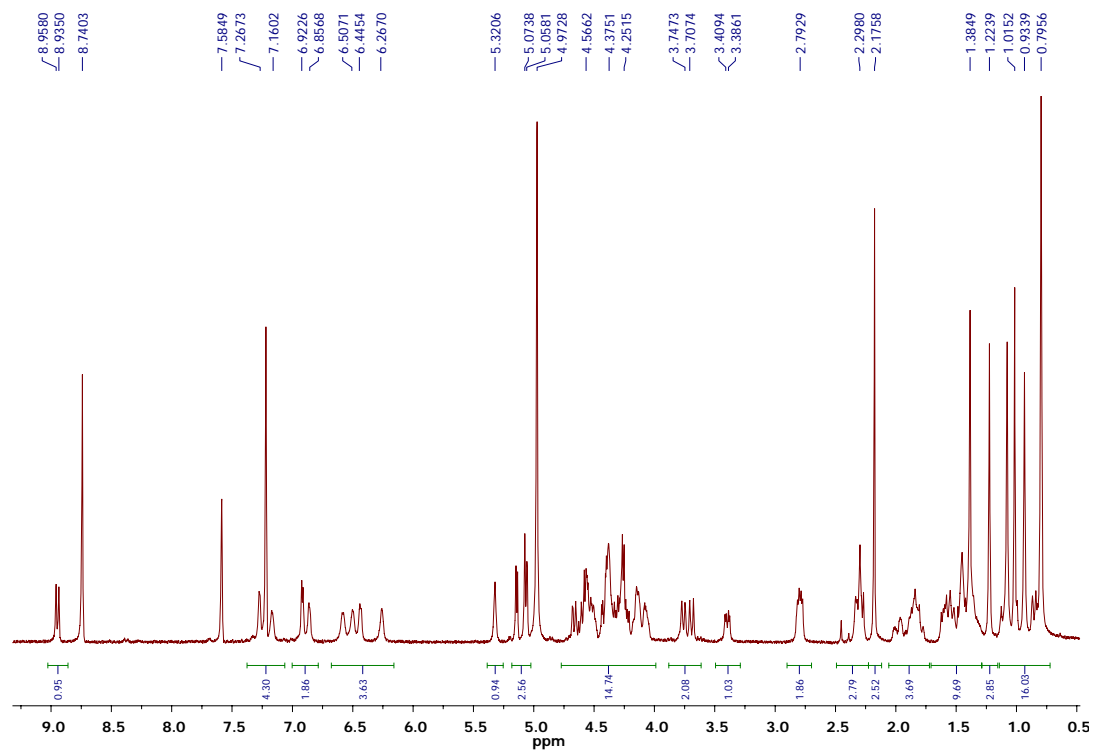
S8 HMBC spectrum of saponin **1**



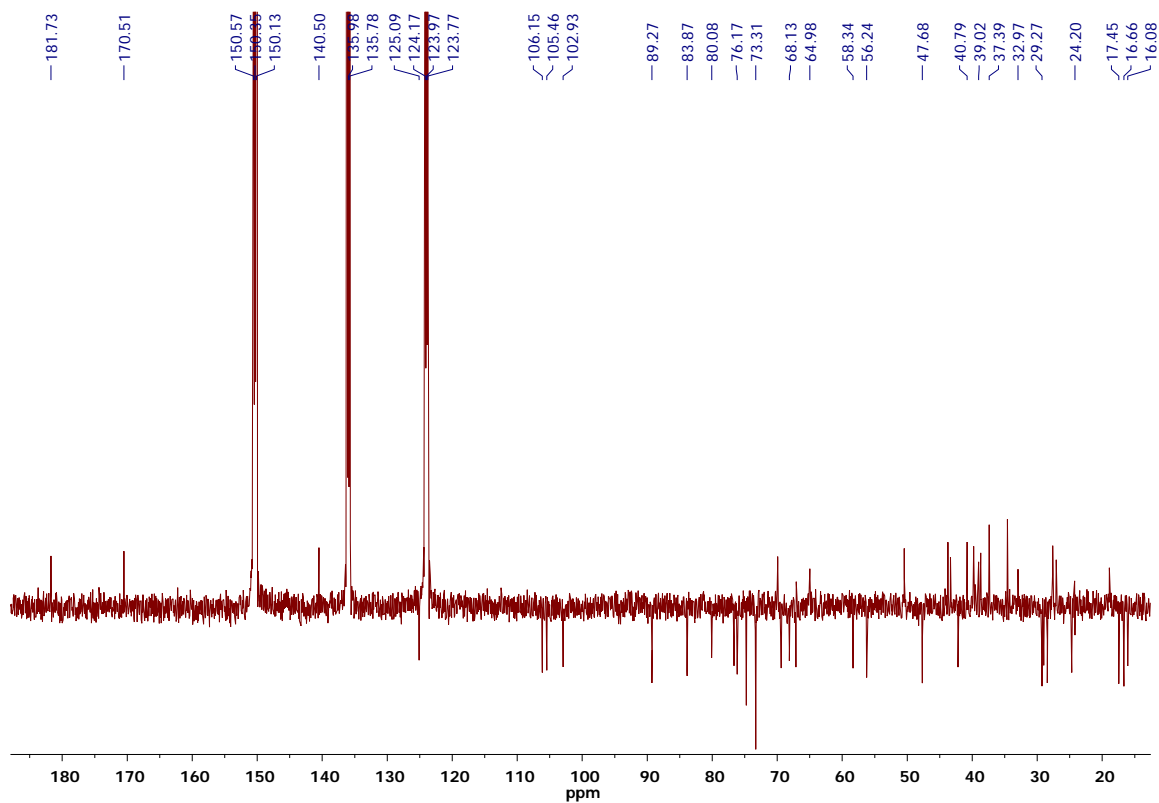
S9 TOCSY spectrum of saponin **1**



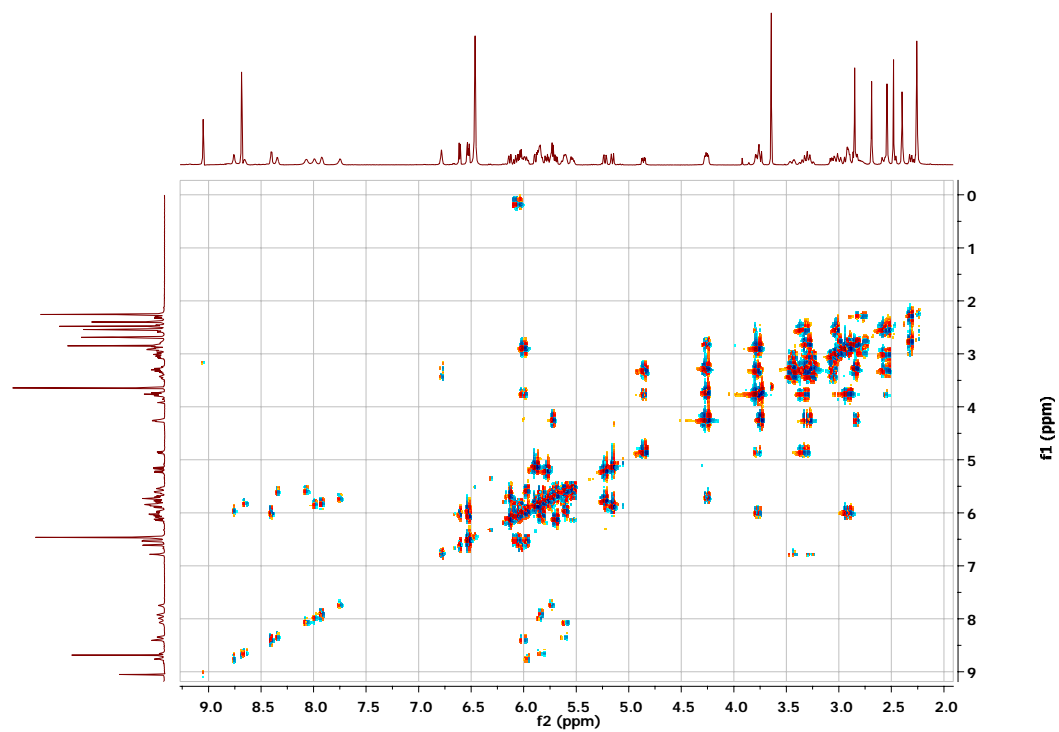
S10 ^1H NMR spectrum (500 MHz in $\text{C}_5\text{D}_5\text{N}$) of saponin **2**



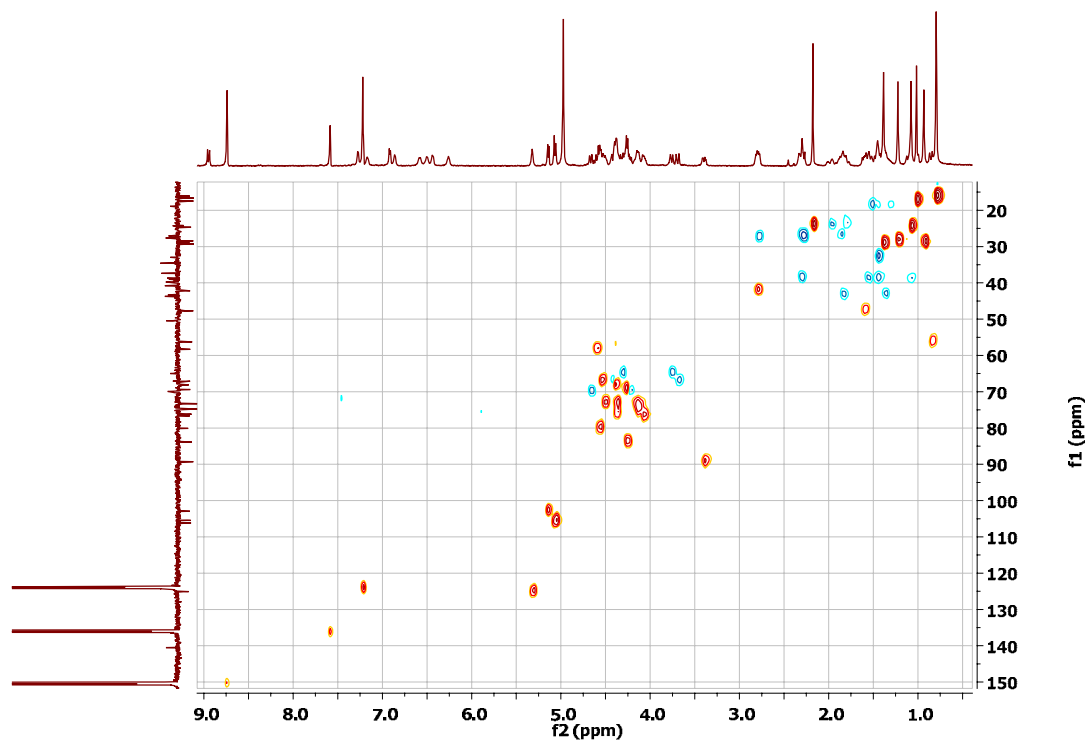
S11 APT ^{13}C NMR spectrum of saponin **2**



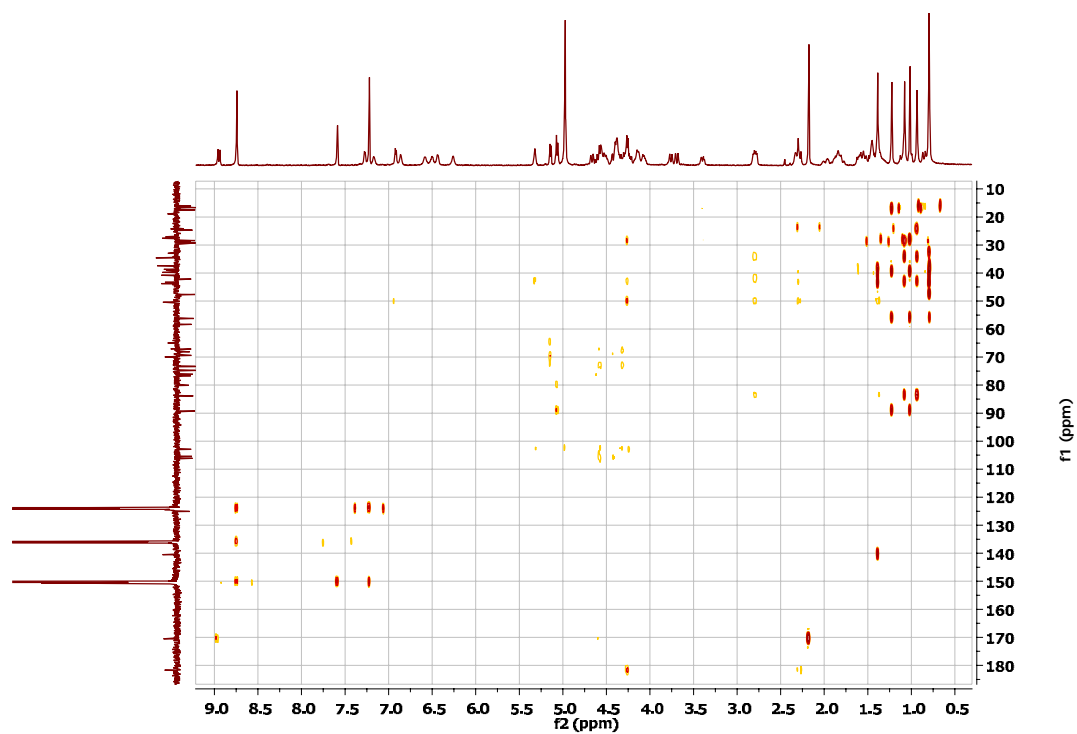
S12 DQF-COSY spectrum of saponin **2**



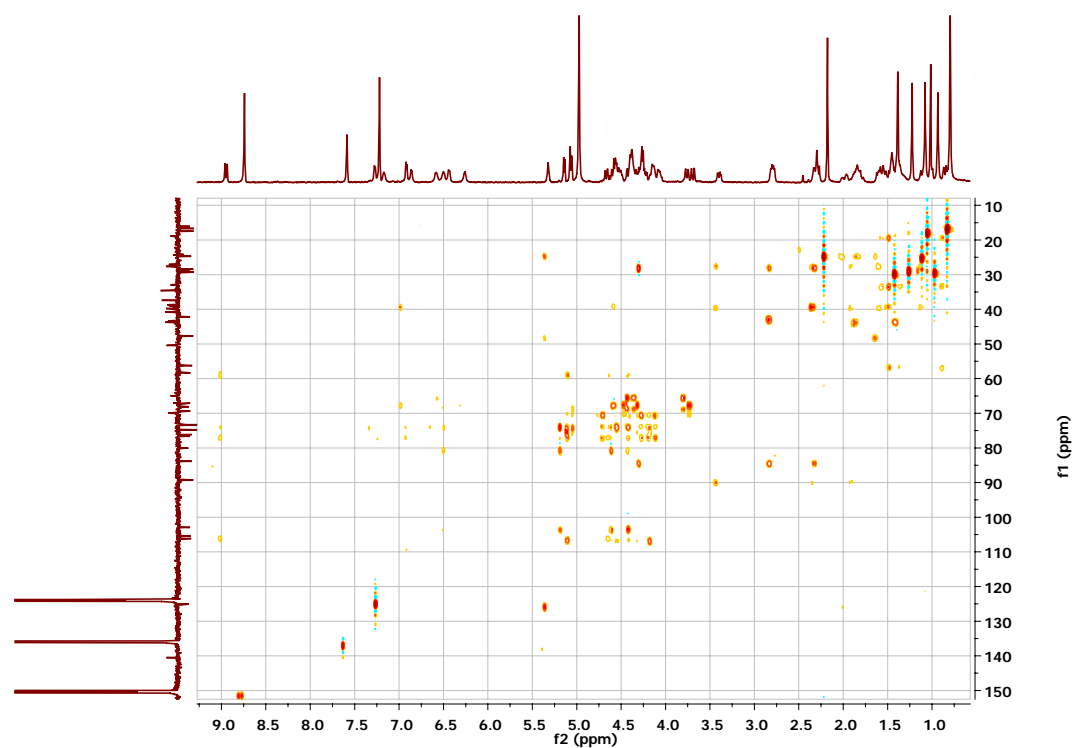
S13 HSQC spectrum of saponin **2**



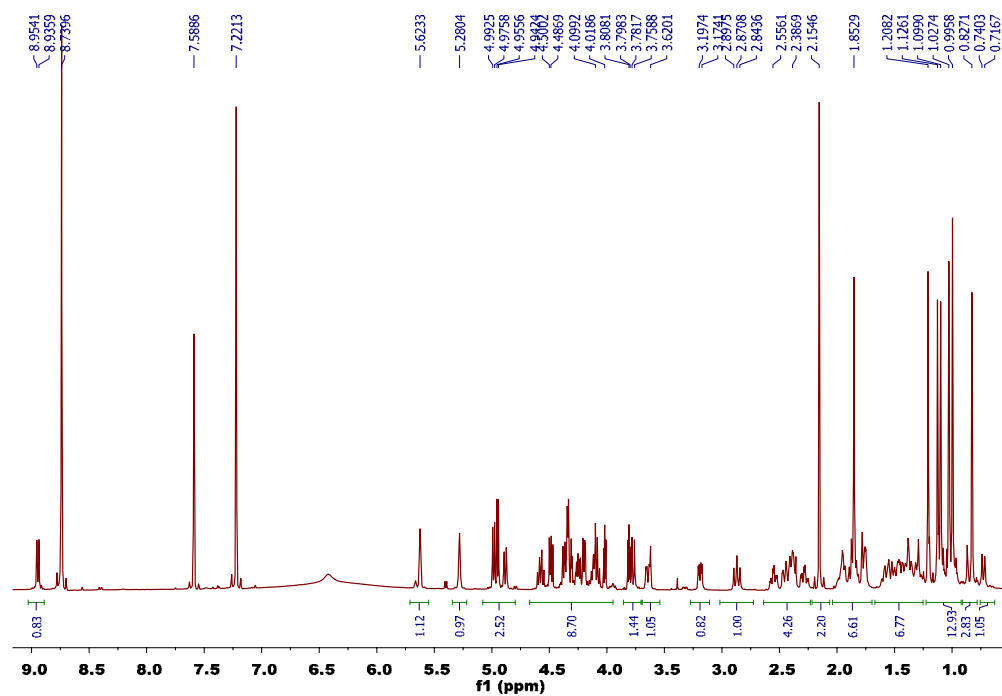
S14 HMBC spectrum of saponin 2



S15 HSQC-TOCSY spectrum of saponin 2



S16 ^1H NMR spectrum (500 MHz in $\text{C}_5\text{D}_5\text{N}$) of saponin **3**



S17 ^{13}C NMR and DEPT135 spectra of saponin **3**

