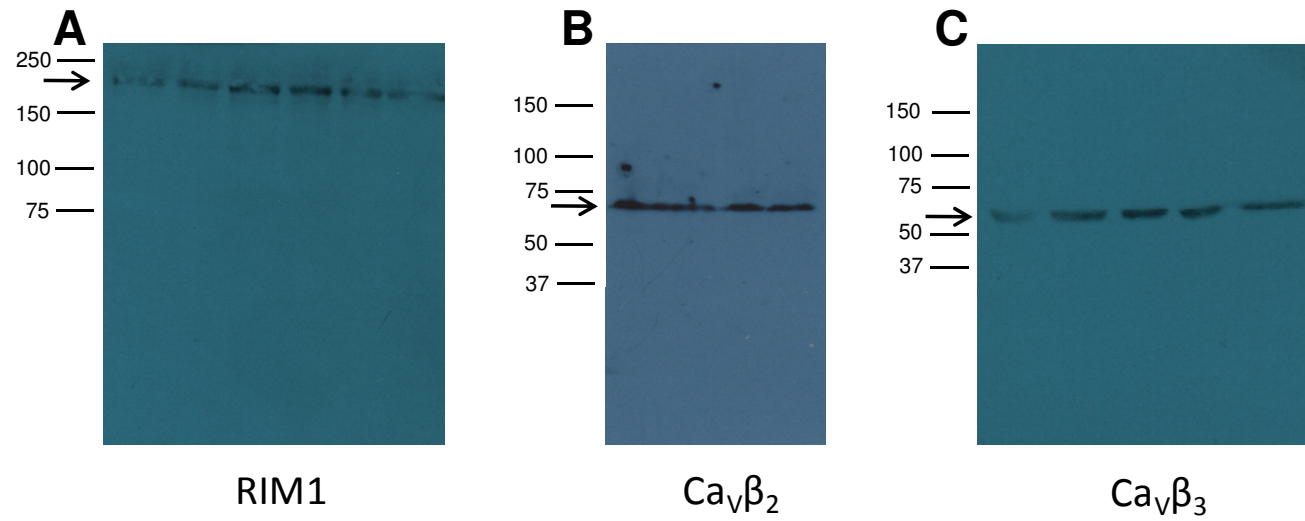


Supplemental Figure 2



Supplemental Figure 2. Western blot analysis of extracts from RIN-m5F cells showing good sensitivity of the antibodies used in this study for detecting RIM1, and the Ca_v channel β₂ and β₃ subunits as indicated. The single bands marked by arrows correspond in size to the mentioned proteins indicating specificity of the respective antibodies.