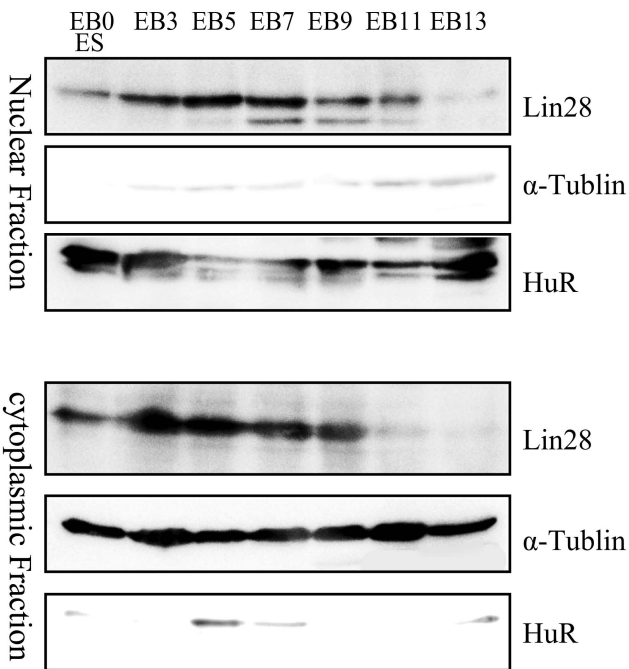
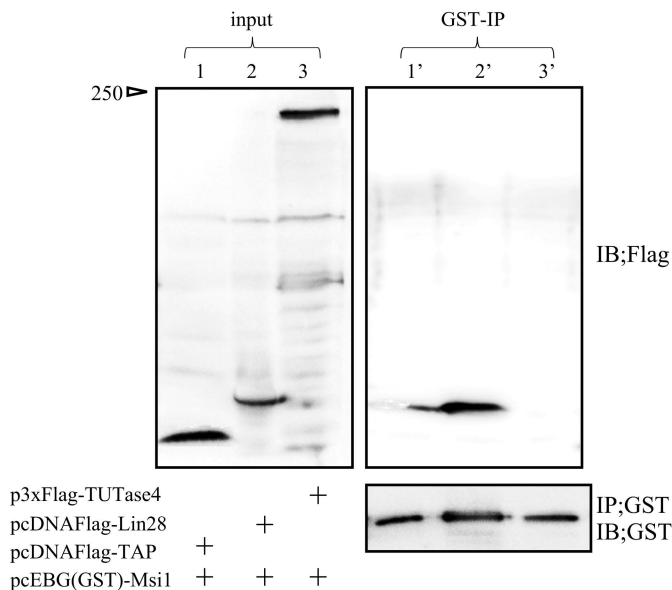


**A**

## Differentiation by low [RA]

**B**

Supplemental FigS. 1. (A) Lin28 localization patterns in EB cells during differentiation.

Immunoblotting was performed on nuclear and cytoplasmic fractions with equal amounts of total protein. HuR and  $\alpha$ -tubulin were loading control. Numbers show days after the beginning of RA treatment. (B) Flag-TAP, Flag-Lin28, or 3xFlag-TUT4, were coimmunoprecipitated with GST-Msi1 in 293T cells using glutathione Sepharose 4B. Notably, Msi1 did not bind to TUT4 under this condition.