

Fig. S1 Genetic relationships between the 74 *S. mutans* amplicypes from 60 subjects. Percentage similarity values are shown. Amplicypes with the same number prior to the hyphen are from a single subject.

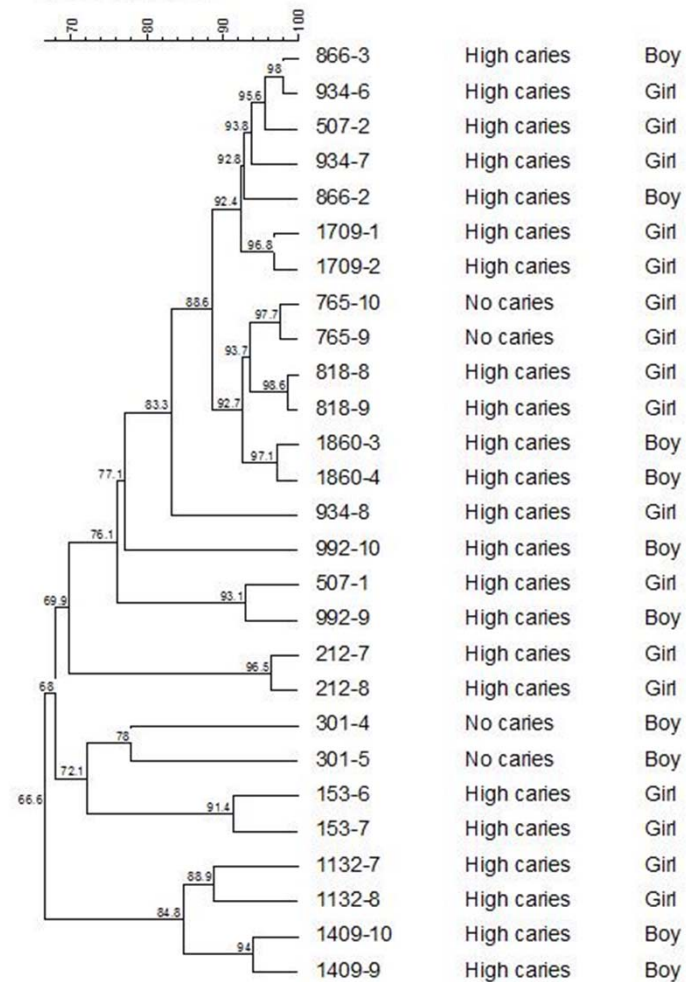


Fig. S2 Genetic relationships between 27 *S. mutans* amplicypes from subjects who harbored more than 1 distinct *S. mutans* amplicype. Percentage similarity values are shown. Amplicypes with the same number prior to the hyphen are from a single subject.

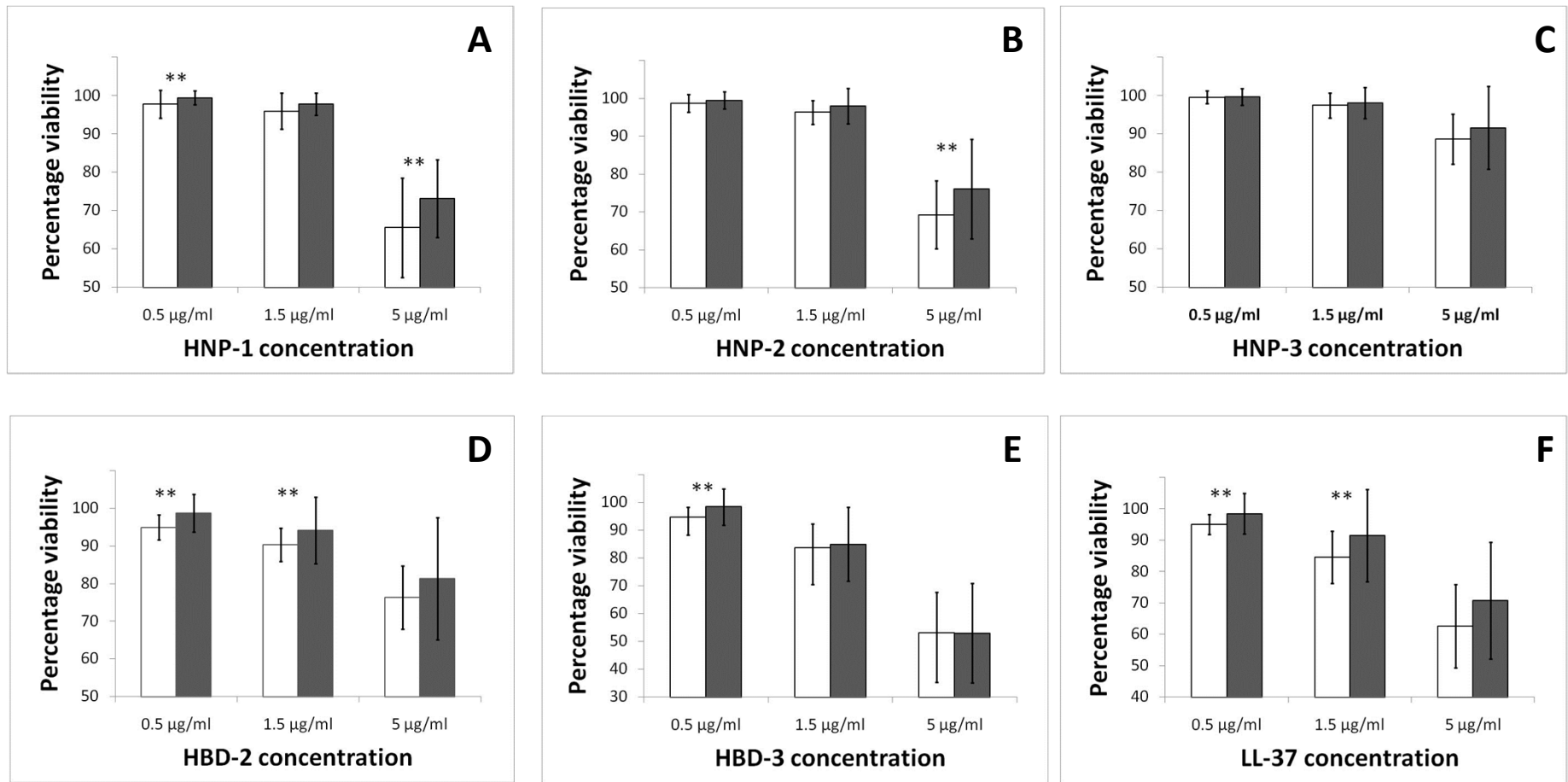


Fig. S3 Susceptibility of *S. mutans* in caries-active versus caries-free subjects: analysis of all strains from subjects. (A) HNP-1; (B) HNP-2; (C) HNP-3; (D) HBD-2; (E) HBD-3; (F) LL-37. White bars represent caries-free subjects. Shaded bars represent caries-active subjects. Asterisks indicate statistically significant findings (p < 0.05).

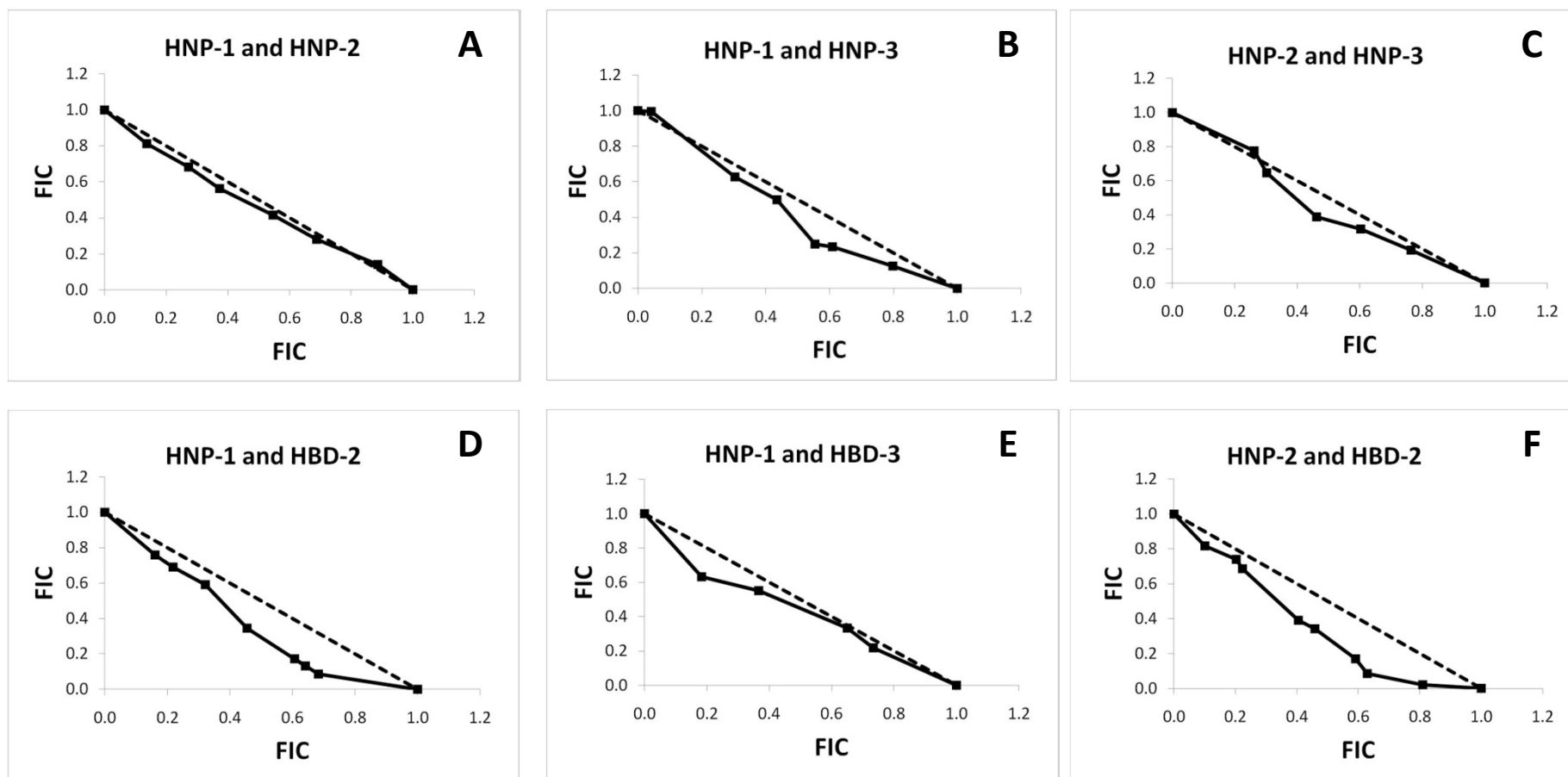


Fig. S4 Effect of AMP combinations. Isobolograms of each peptide combination are shown. (A) HNP-1 and HNP-2; FIC index = 0.961; (B) HNP-1 and HNP-3; FIC index = 0.933; (C) HNP-2 and HNP-3; FIC index = 0.849; (D) HNP-1 and HBD-2; FIC index = 0.799; (E) HNP-1 and HBD-3; FIC index = 0.918; (F) HNP-2 and HBD-2; FIC index = 0.715; (G) HNP-2 and HBD-3; FIC index = 1.042; (H) HNP-3 and HBD-2; FIC index = 0.629; (I) HNP-3 and HBD-3; FIC index = 0.779; (J) HNP-1 and LL-37; FIC index = 0.586; (K) HNP-2 and LL-37; FIC index = 0.645; (L) HNP-3 and LL-37; FIC index = 0.587. (M) HBD-2 and HBD-3; FIC index = 1.022; (N) HBD-2 and LL-37; FIC index = 1.043 and (O) HBD-3 and LL-37; FIC index = 1.096. Dashed line, expected result for additive interaction. Experiments were repeated two times with similar results. Results shown are from a representative experiment.

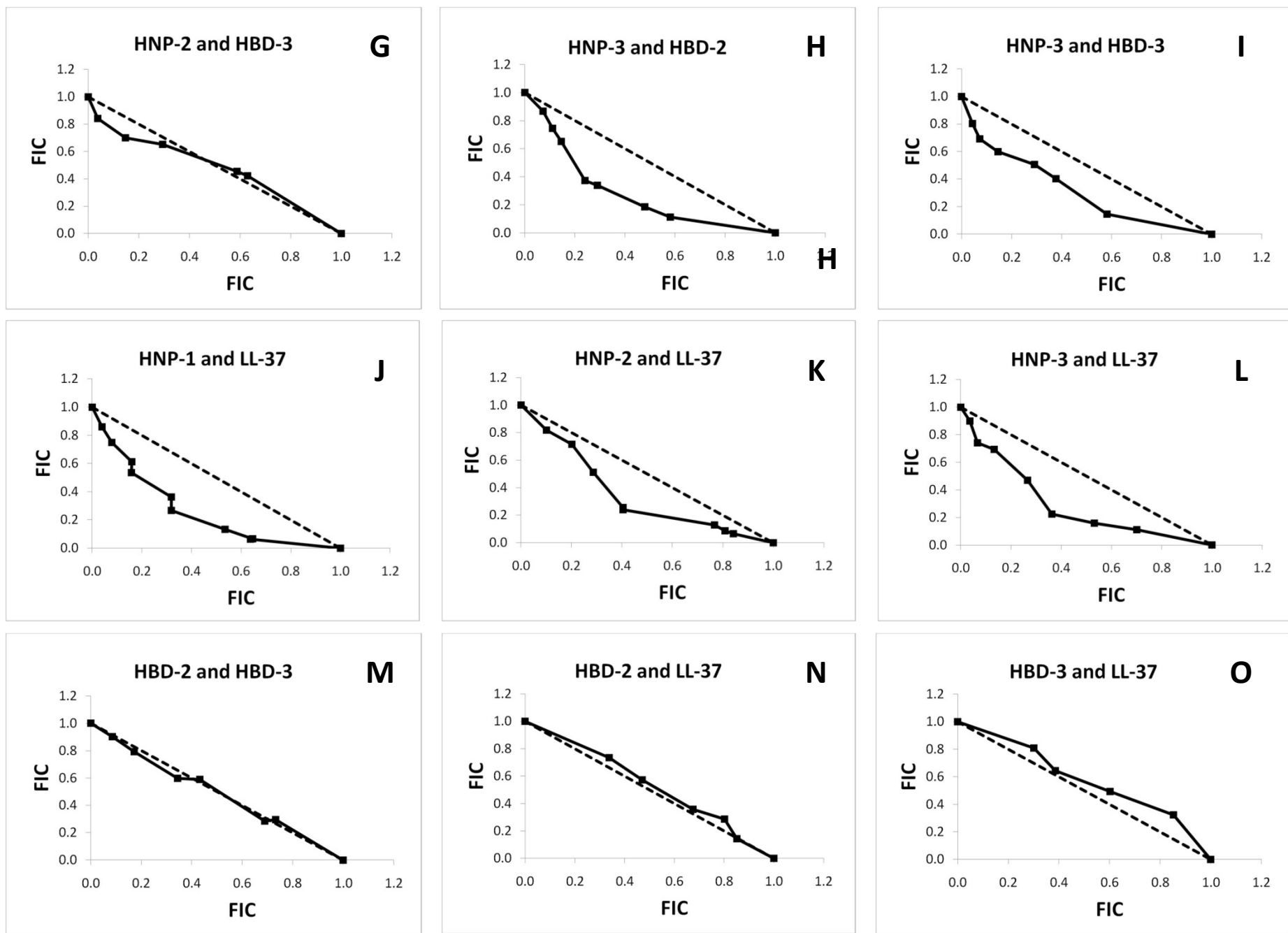


Fig. S4 Continued.

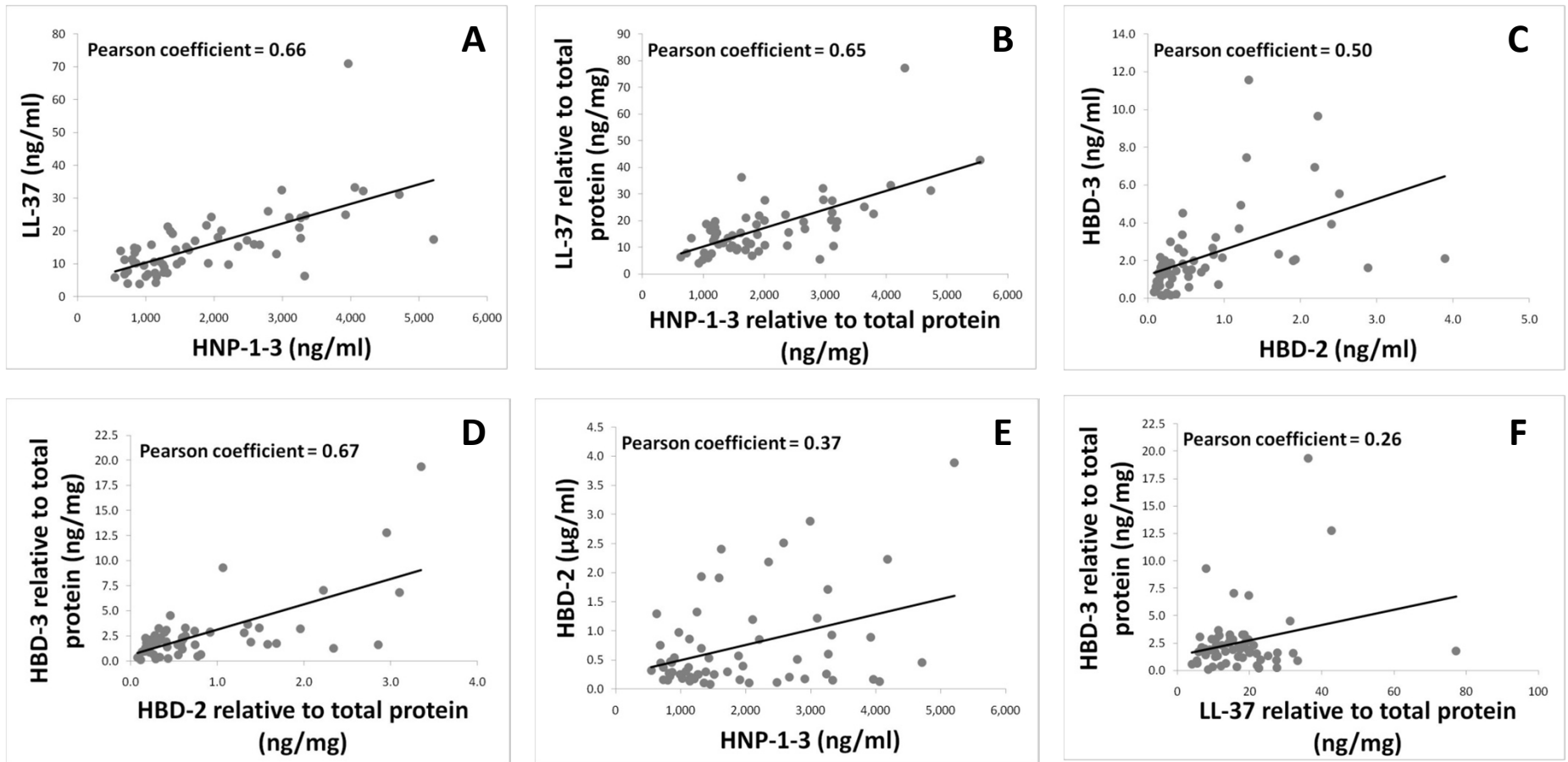


Fig. S5 Relationships between the salivary AMP levels. Only significant correlations are shown. (A) HNP-1-3 and LL-37; (B) HNP-1-3 relative to total protein and LL-37 relative to total protein; (C) HBD-2 and HBD-3; (D) HBD-2 relative to total protein and HBD-3 relative to total protein; (E) HNP-1-3 and HBD-2; (F) LL-37 relative to total protein and HBD-3 relative to total protein.

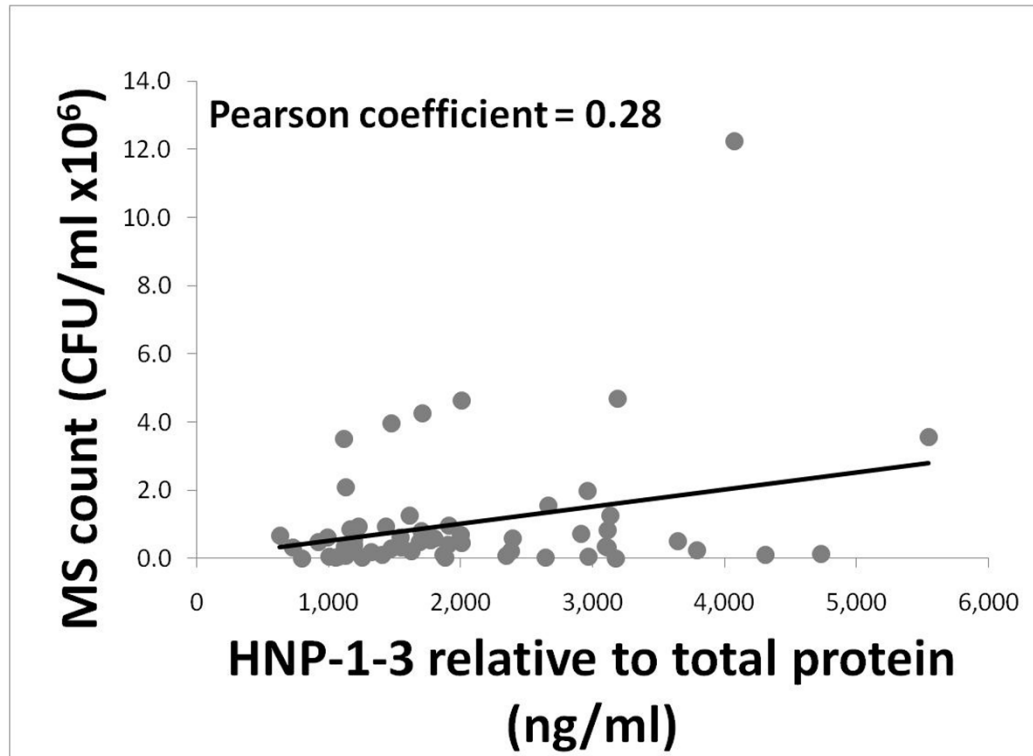


Fig. S6 Relationship between levels of HNP-1-3 in saliva and MS count in dental plaque (p=0.03).

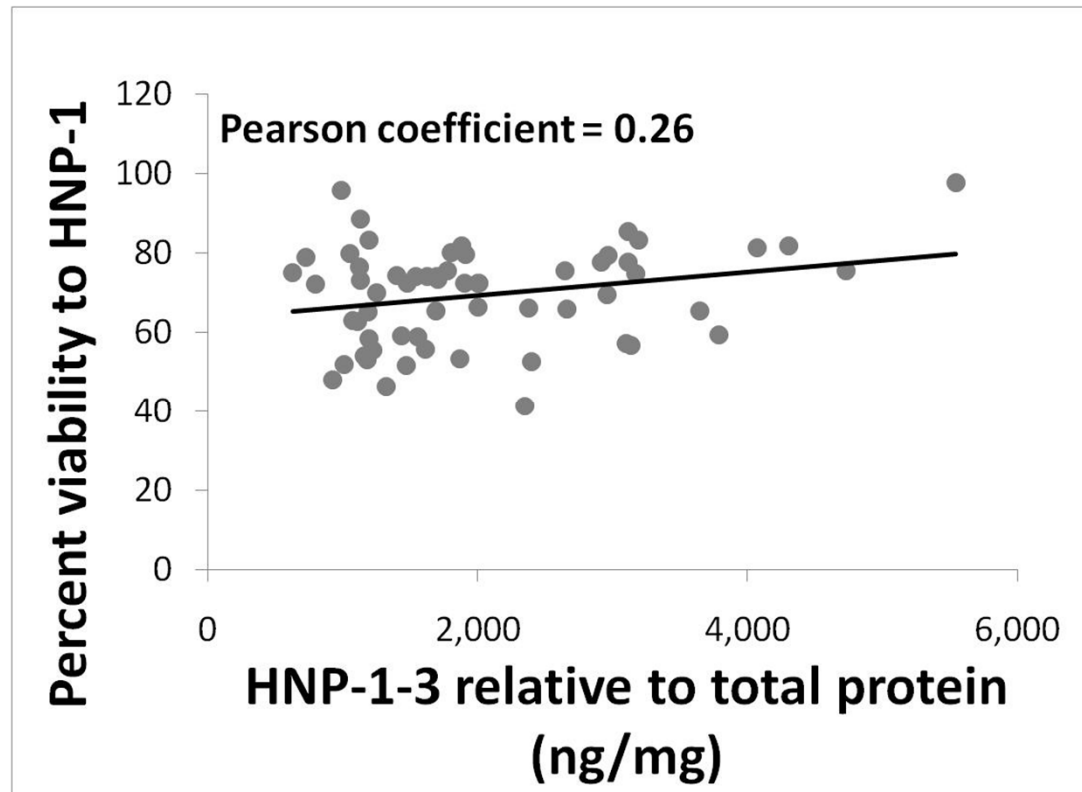


Fig. S7 Relationship between levels of HNP-1-3 in saliva and the susceptibility profiles of *S. mutans* to HNP-1 (p=0.04).