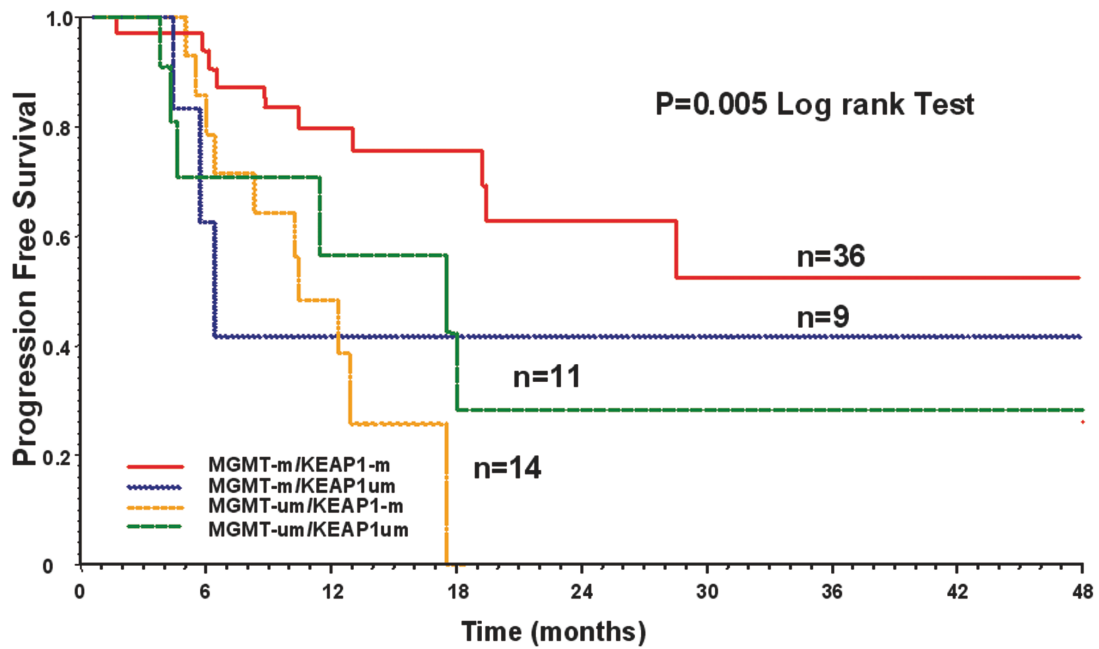


Supplemental Figure 1. ROC curve analysis of Quantitative Methylation

Specific PCR results. A) ROC curve for KEAP1 QMSP assay was designed on the basis of KEAP1/ACTB ratios determined in normal brain tissues (n=20) and tumor samples (n=86). B) ROC curve for MGMT QMSP assay was designed on the basis of MGMT/ACTB ratios determined in normal brain tissues (n=20) and tumor samples (n=86)



Supplemental Figure 2. Kaplan- Meier curve showing the relationship of the different groups identified by KEAP1 and MGMT methylation status with progression free survival (PFS). MGMT-m MGMT/ACTB ratio above the cut off value; MGMT-um, MGMT/ACTB ratio below the cut off value; KEAP1-m KEAP1/ACTB ratio above the cut off value; KEAP1-um, KEAP1/ACTB ratio below the cut off value;