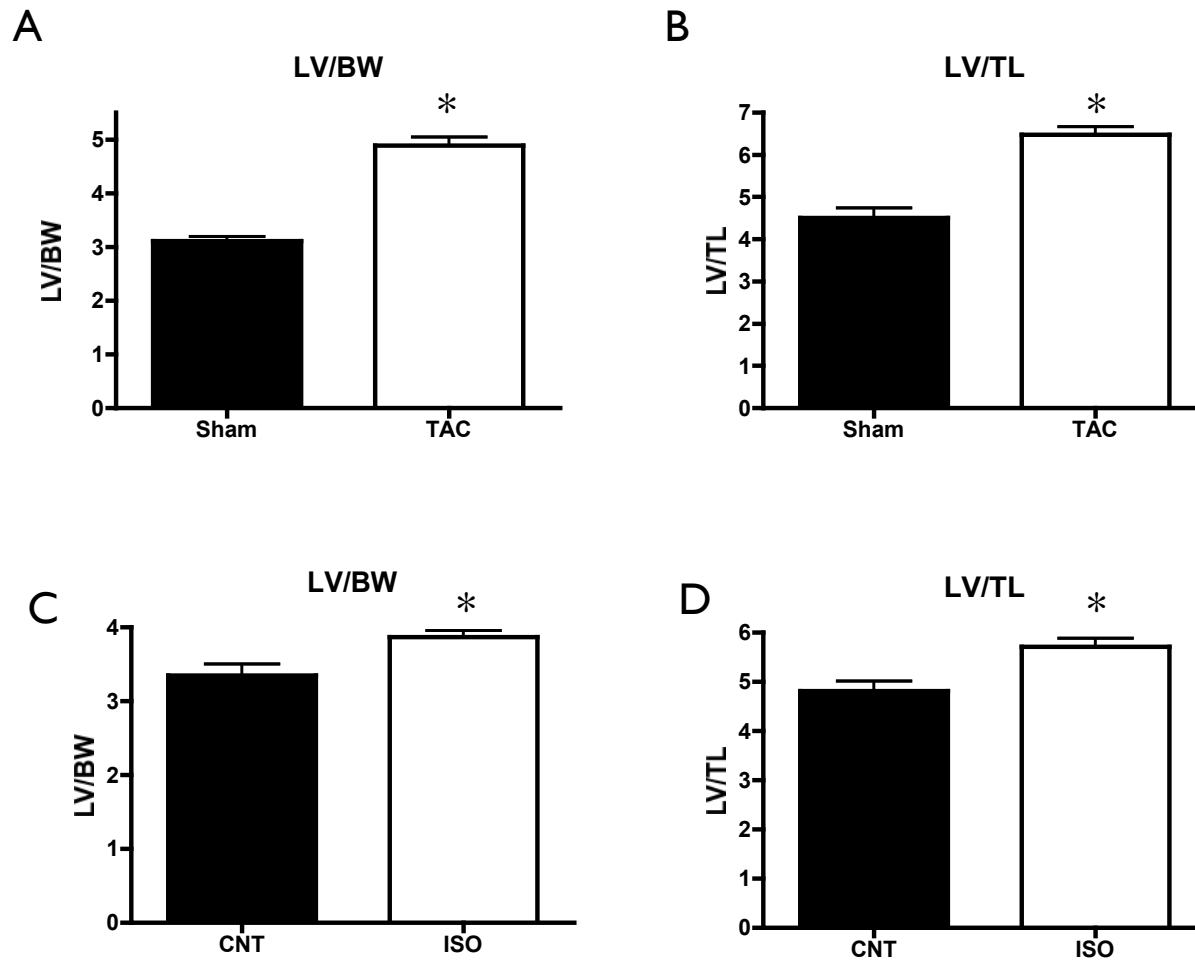
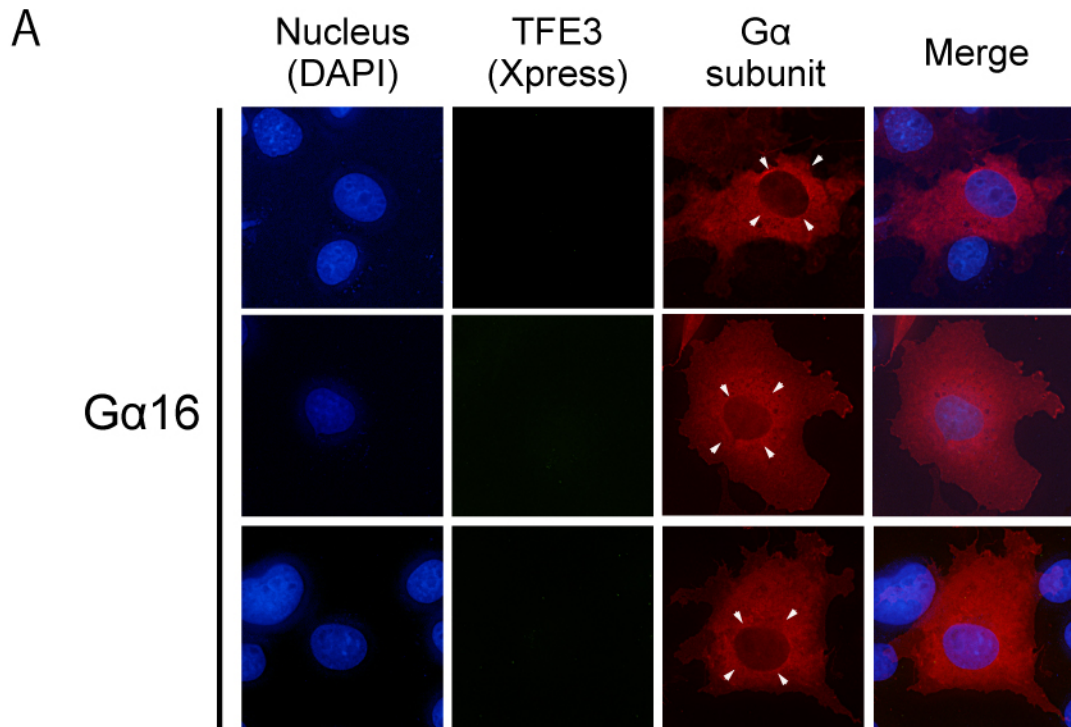


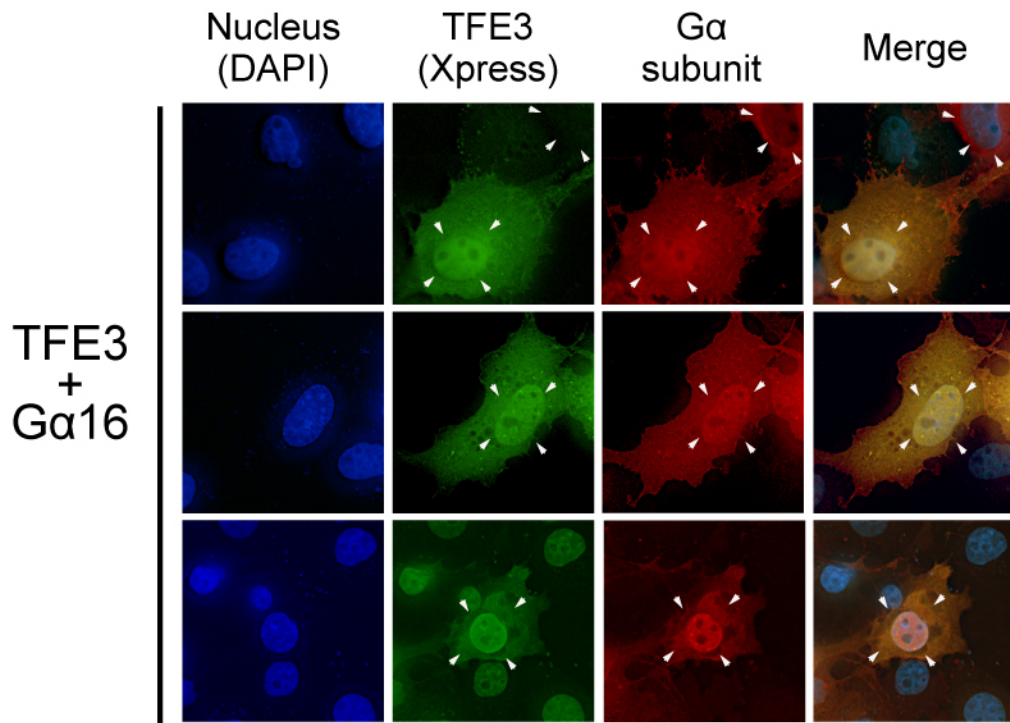
Supplemental Figure 1



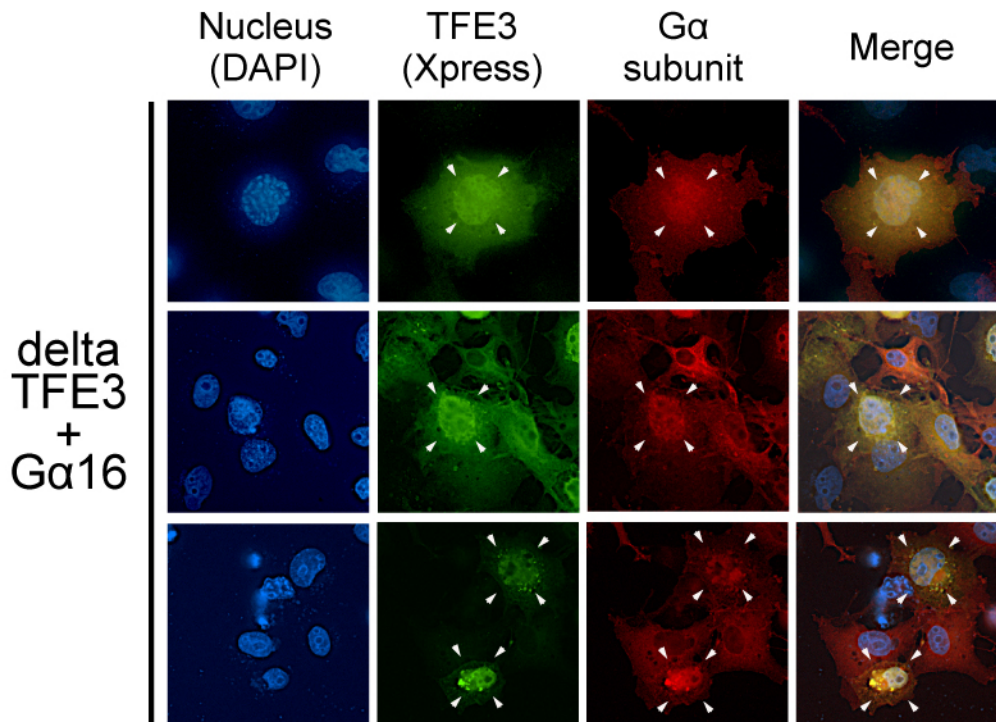
Cardiac hypertrophy induced by TAC or isoproterenol. The cardiac hypertrophy was developed in the mouse heart as described in the “Experimental Procedures”. The wet weight of left ventricle (LV), body weight (BW), and tibial length were measured. Data were expressed in the ratio of the left ventricle to body weight (A, C) or to the tibial length (B, D) in mouse model of TAC or continuous infusion of isoproterenol (ISO). * $p < 0.05$.



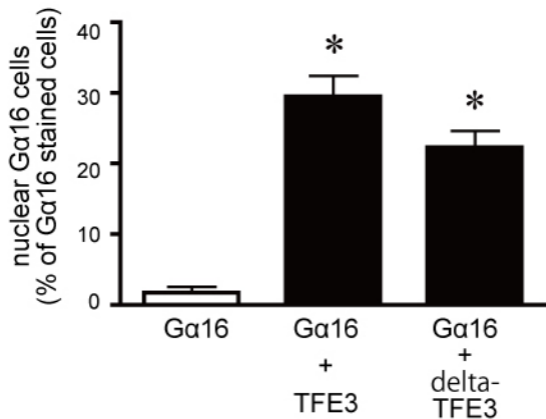
B



C



D



Supplemental Figure 2D. Effect of TFE3 on localization of Ga16 in COS7 cells. The number of cells expressing Ga16 and cells expressing Ga16 in the nucleus were counted, respectively. Data are represent 160-200 transfected cells from 4-5 of independent experiments. Please note that ~40% of Ga16-transfected cells expressed TFE3 in double transfection of Ga16 and TFE3 constructs. Thus, typically, 60-70% of Ga16-TFE3 expressing cells showed nuclear localization of Ga16. * $p < 0.05$ vs Ga16 group.