

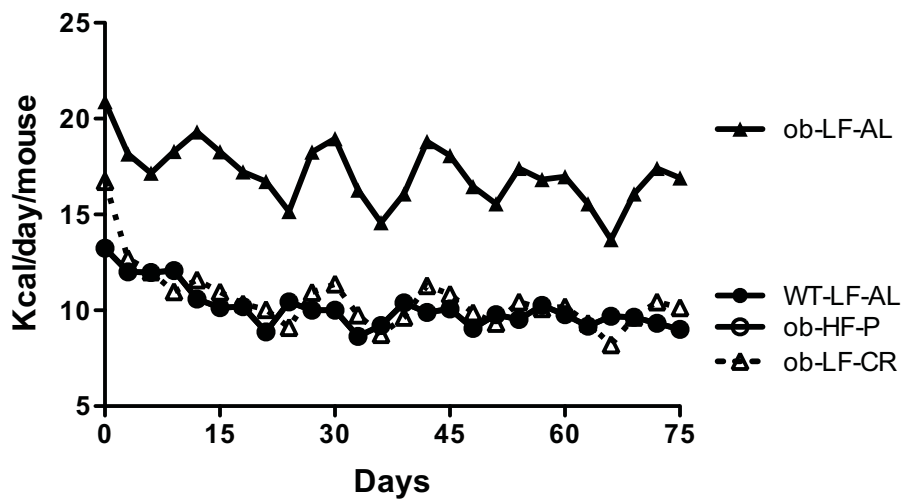
1 **Supplemental Fig. 1. Energy intake of *ob/ob* mice during CR treatment.** Food intake  
2 of *ob*-LF-AL or WT-LF-AL mouse was measured daily. Energy intake was calculated  
3 based on 3.85 kcal/g for LF and 5.24 kcal/g for HF.

4 **Supplemental Fig. 2. Energy intake of A/J mice.** Food intake by A/J-LF-AL and A/J-  
5 HF-AL was measured daily. The CR mice received LF or HF diet with the same amount  
6 of calories, which was 70% of the energy intake of A/J-LF-AL mice.

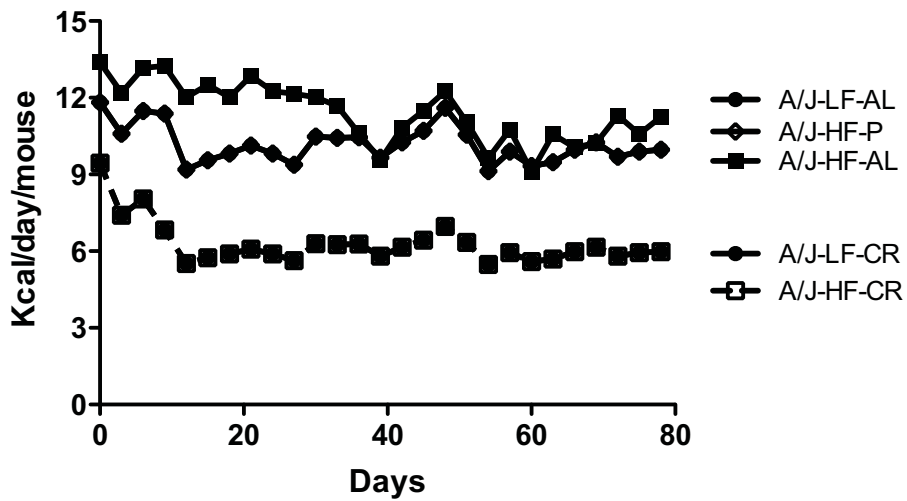
7 **Supplemental Fig 3. Calorie restriction failed to increase adiponectin in PPAR $\alpha$  KO**  
8 **mice. a&b,** low blood adiponectin in PPAR $\alpha$  KO mice. Blood samples were collected  
9 from 3-month old PPAR $\alpha$  KO and C57BL/6 male mice. Total (**a**) and multimeric (**b**)  
10 adiponectin levels were measured using Western blotting under reducing or non-reducing  
11 conditions, respectively. **c,** proteins were prepared from the epididymal fat of PPAR $\alpha$   
12 KO-CR or PPAR $\alpha$  KO-AL mice. Adiponectin was measured by Western blotting. n = 6.

13

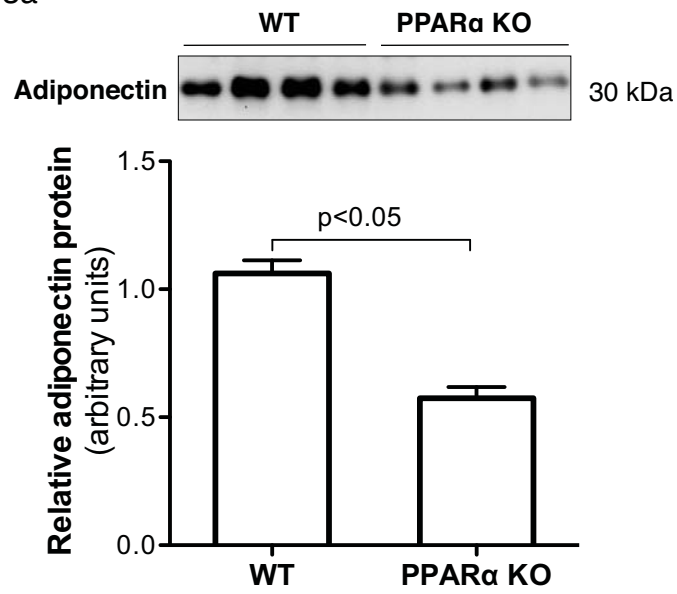
Supplemental Fig. 1



Supplemental Fig. 2



Supplemental Fig. 3a



Supplemental Fig. 3b

