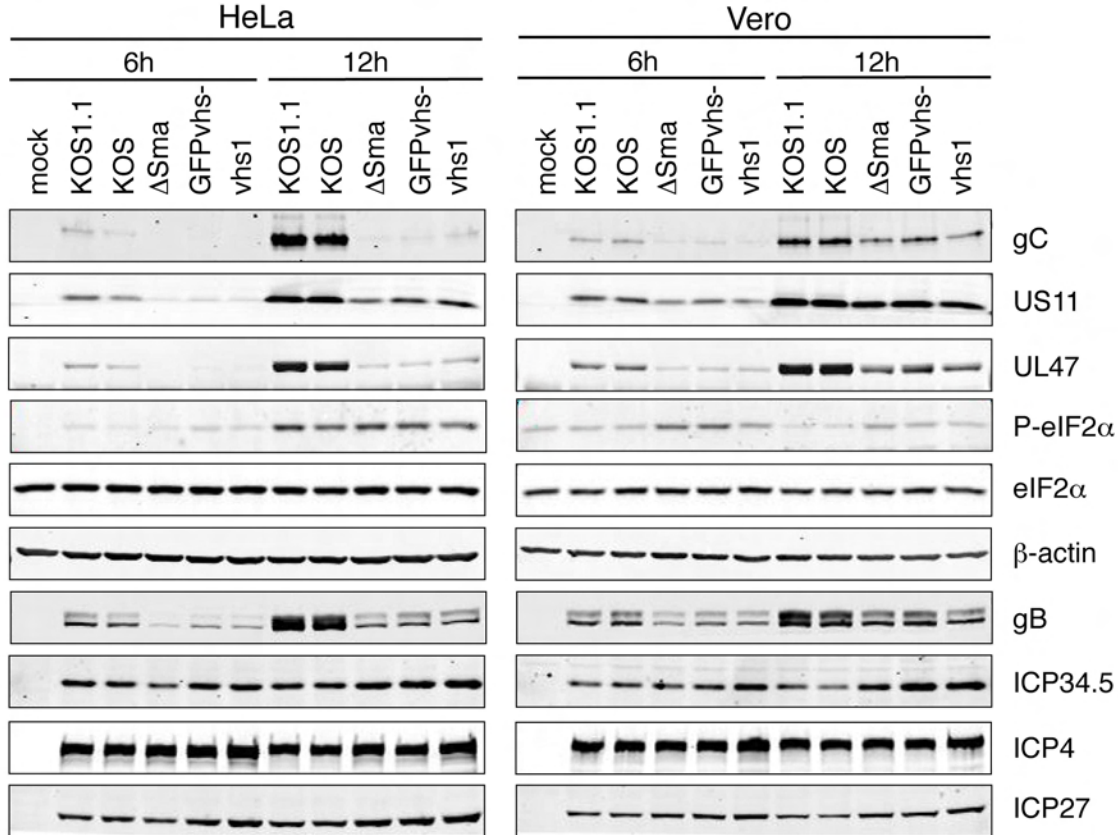
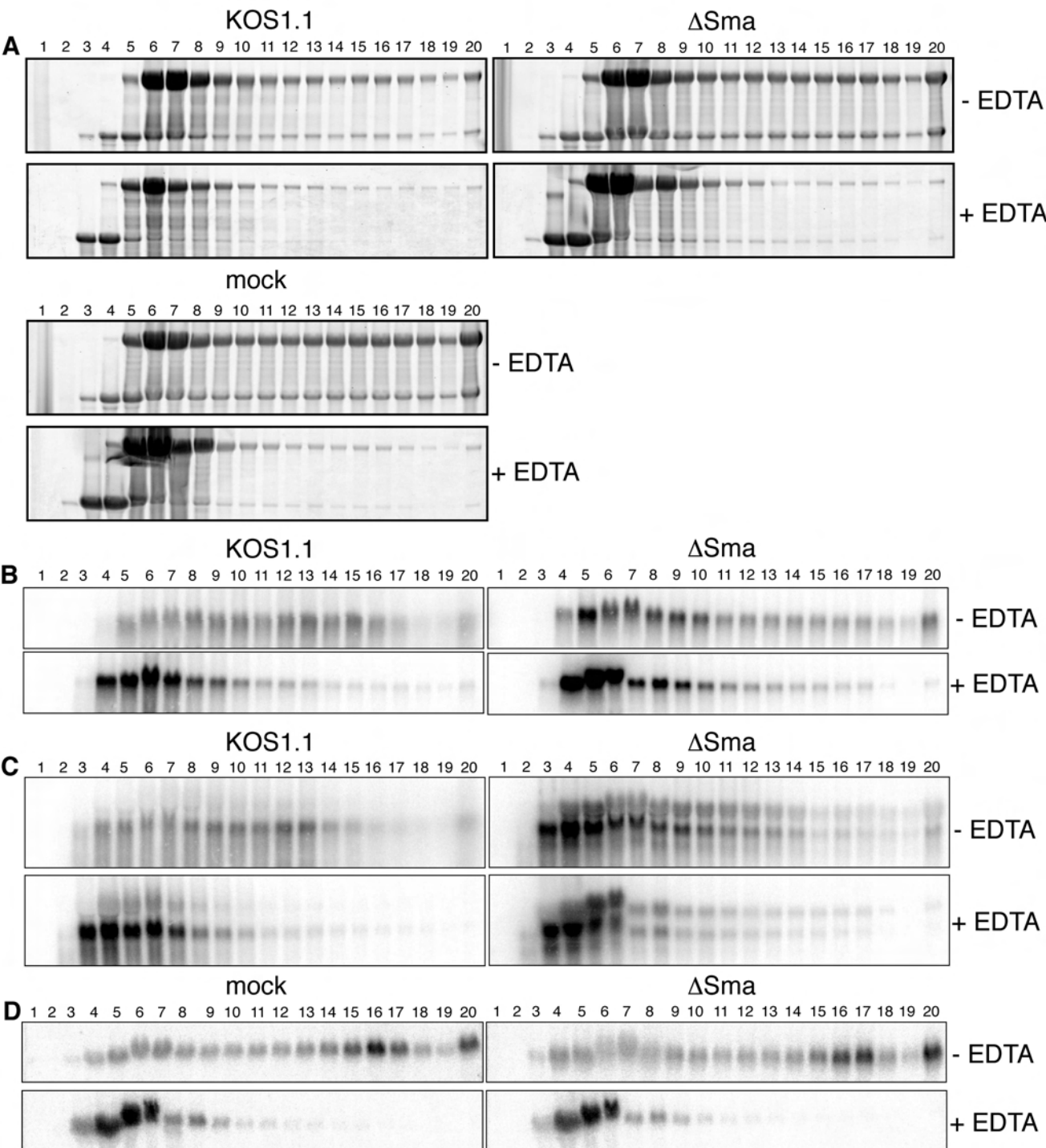


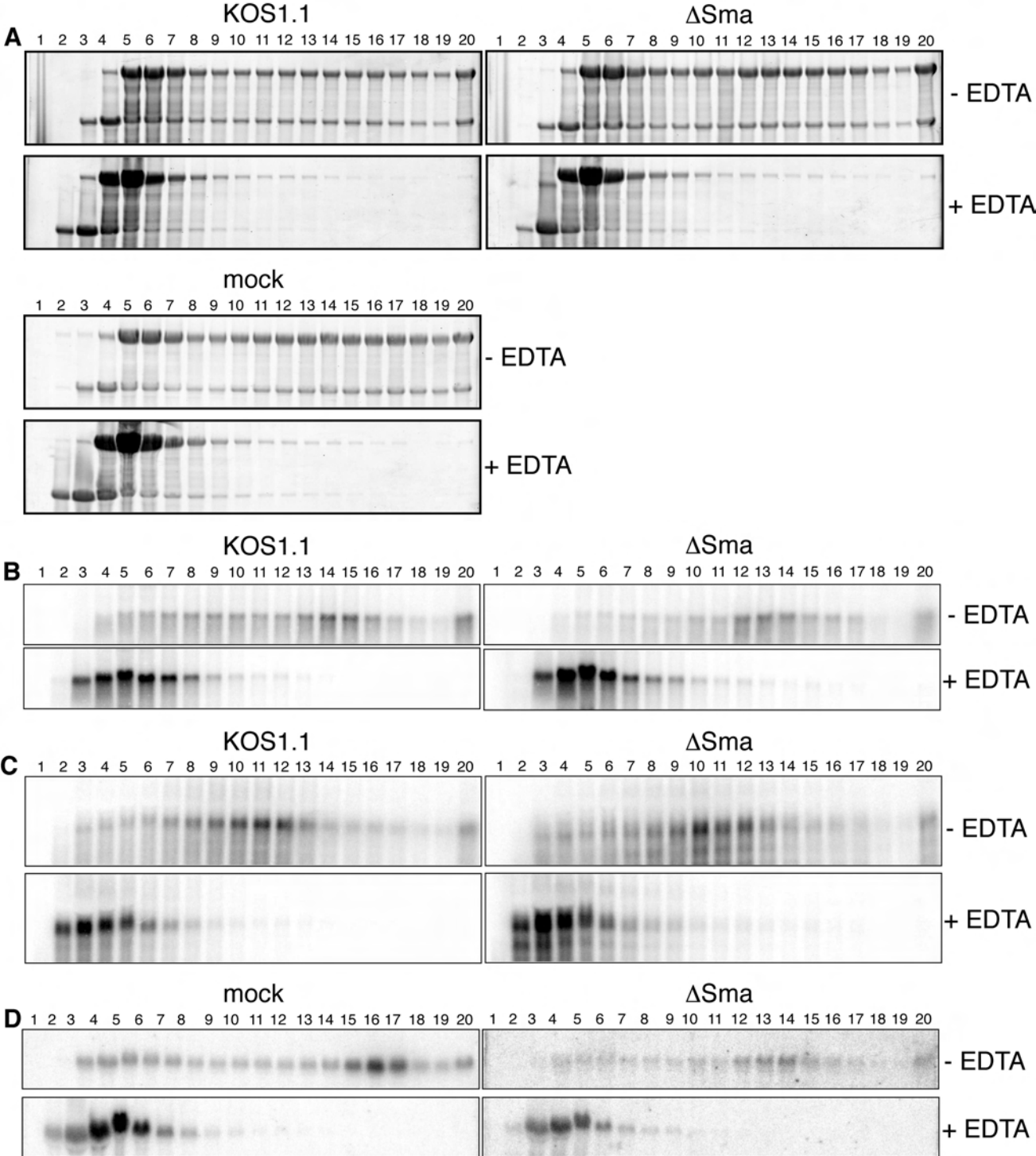
Suppl. Figure 1. SGs form after infection with three different vhs mutants. HeLa cells were infected with KOS or the vhs mutants Δ Sma, vhs1, or GFPvhs⁻ at an MOI of 10 for 16 hours. KOS infected cells were stained for ICP4 (pink), TIA-1 (green) and DNA (blue). Δ Sma and vhs1 infected cells were stained for ICP4 (pink), TIAR (green) and DNA (blue). GFPvhs⁻ infected cells express GFP (green) and were stained for TIA-1 (red) and DNA (blue). GFP is cytoplasmic but appears nuclear due to rounding up of some cells.



Suppl. Figure 2. KOS displays the same phenotype as the derivative KOS1.1. HeLa or Vero cells were mock treated or infected with KOS1.1, KOS or the vhs mutants Δ Sma, GFPvhs-, or vhs1. Lysates were prepared at 6 and 12 hpi and analyzed by immunoblotting with antibodies specific for gC, US11, UL47, phospho-eIF2 α , total eIF2 α , β -actin, gB, ICP34.5, ICP4, and ICP27.



Suppl. Figure 3. Raw data for figure 6 A, B, C. HeLa cells were mock treated or infected with KOS1.1 or Δ Sma at an MOI of 10. Cells were lysed 12 hpi, incubated with or without EDTA and analyzed by sedimentation through a 10-50% sucrose gradient. Samples were taken from top (fraction 1) to bottom (fraction 20) and extracted RNA was analyzed by agarose gel electrophoresis. 18S and 28S ribosomal RNAs were visualized by SYBR-gold staining (A) before blotting and probing for the viral mRNAs for gC (B) and US11 (C) or the cellular γ -actin mRNA (D).



Suppl. Figure 4. Raw data for figure 6 D, E, F. Vero cells were mock treated or infected with KOS1.1 or Δ Sma at an MOI of 10. Cells were lysed 12 hpi, incubated with or without EDTA and analyzed by sedimentation through a 10-50% sucrose gradient. Samples were taken from top (fraction 1) to bottom (fraction 20) and extracted RNA was analyzed by agarose gel electrophoresis. 18S and 28S ribosomal RNAs were visualized by SYBR-gold staining (A) before blotting and probing for the viral mRNAs for gC (B) and US11 (C) or the cellular γ -actin mRNA (D).