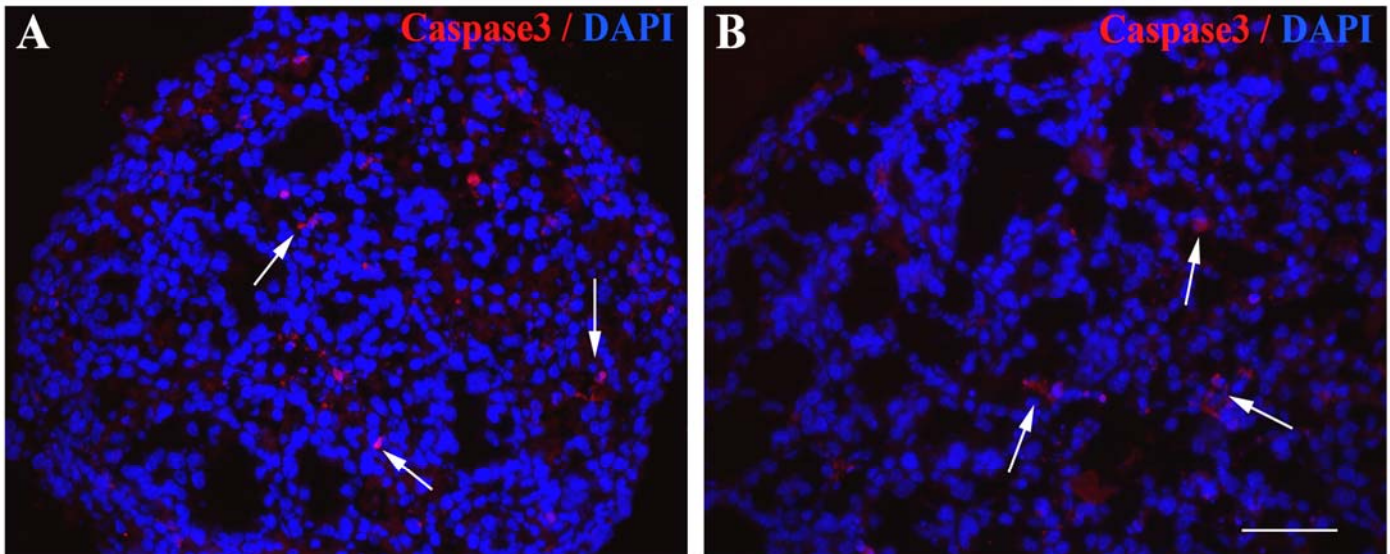


Supplemental Figure 3: Cellular apoptosis of PB is not altered by EMAP II.



Pulmonary bodies treated with EMAP II versus vehicle were examined for apoptosis using an antibody directed toward activate caspase 3 (cy3). Overall apoptotic levels were low in vehicle treated lungs (A) (arrows denote apoptotic cells). Furthermore, PB treated with EMAP II (B) did not exhibit an increase in apoptosis (arrows denote apoptotic cells). Nuclear staining was identified using DAPI co-localization. Magnification bar = 60 microns.