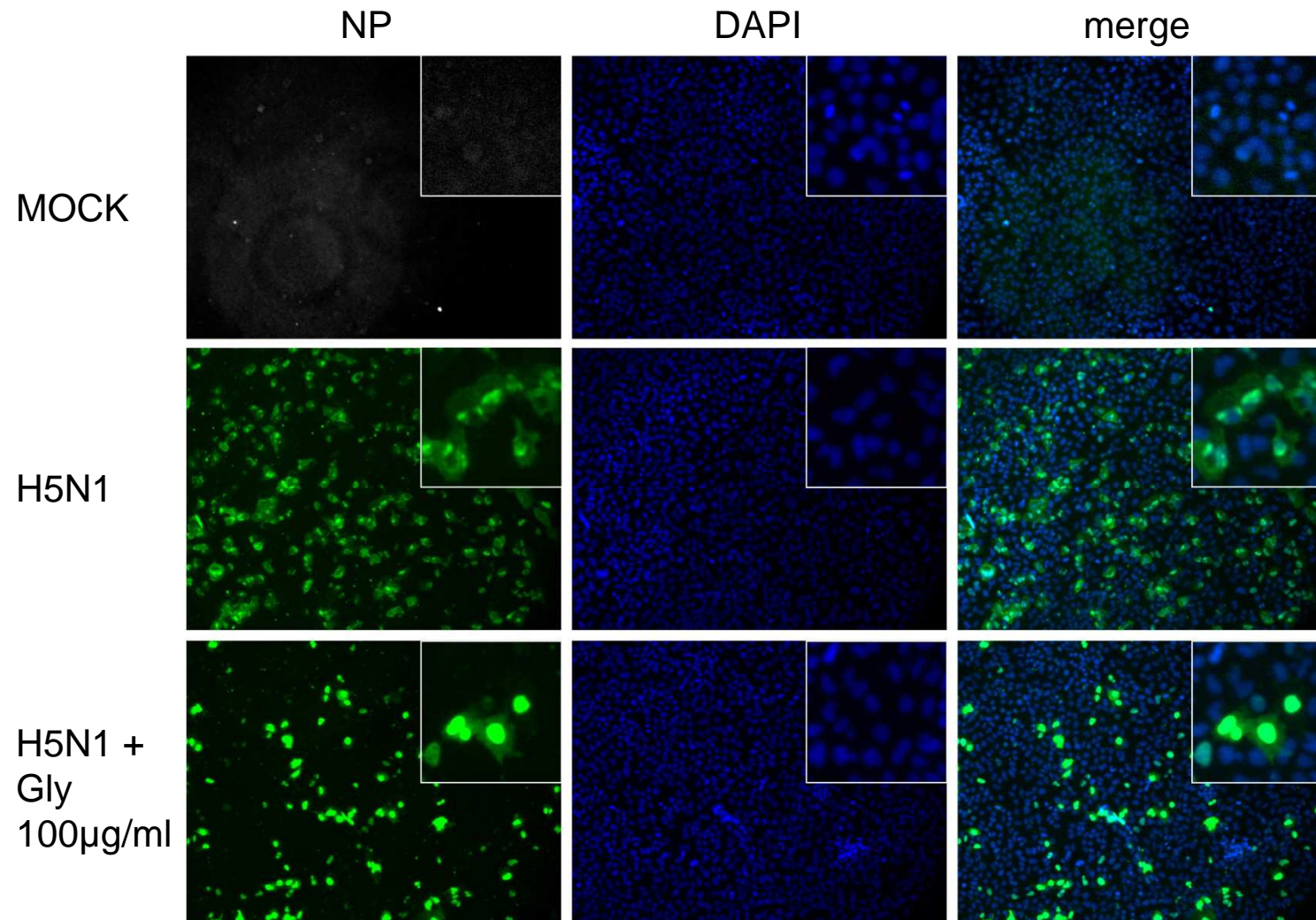


Figure S2



**Figure S2. Influence of glycyrrhizin on nuclear export of influenza A virus ribonucleoprotein (RNP) complexes.**

Influence of glycyrrhizine (Gly) on nuclear export of viral NP indicating RNP complexes in H5N1 A/Thailand/1(Kan-1)/04 (MOI 1)-infected A549 cells 8h p.i. RNP localisation (green) was visualised by fluorescence microscopy using an antibody directed against influenza A NP. Nuclei are stained by DAPI (shown in blue).