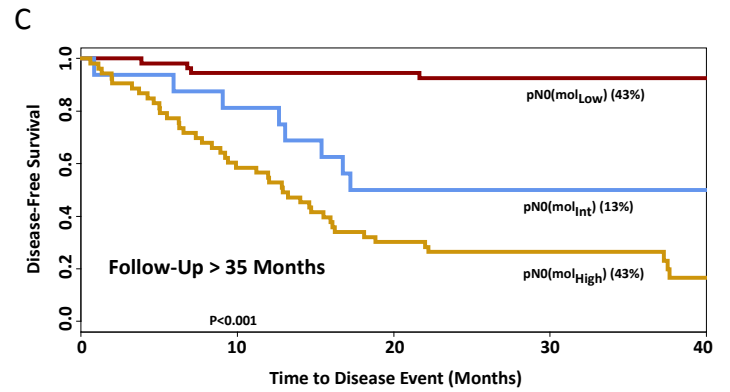
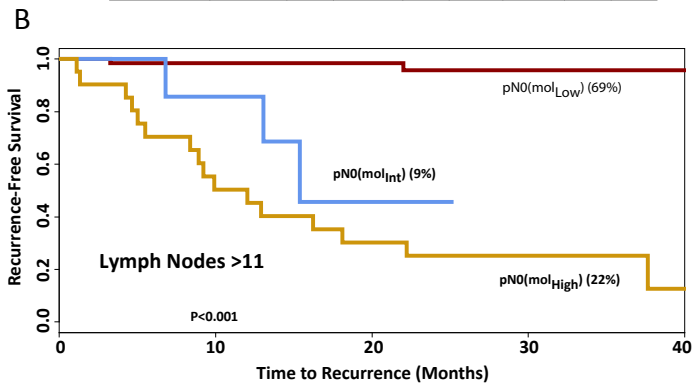


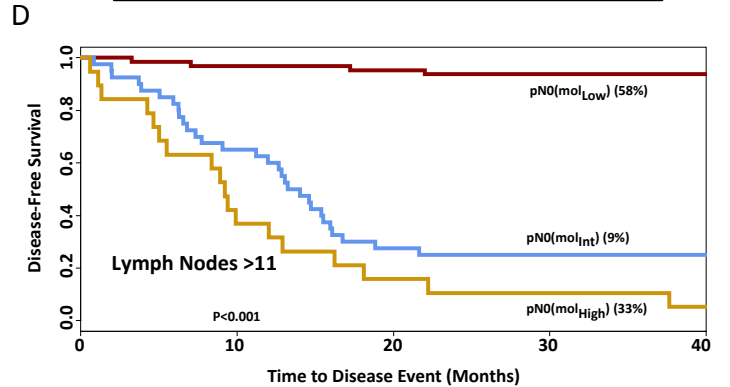
	Months	0	6	12	18	24	30	36
pN0(mol <sub>Low</sub> )	Patients	64	63	62	61	60	60	60
Cumulative	Events	0	1	2	3	3	3	3
pN0(mol <sub>Int</sub> )	Patients	40	33	24	12	10	10	10
Cumulative	Events	0	7	16	28	30	30	30
pN0(mol <sub>High</sub> )	Patients	19	12	7	4	2	2	2
Cumulative	Events	0	7	12	15	17	17	17



	Months	0	6	12	18	24	30	36
pN0(mol <sub>Low</sub> )	Patients	54	53	51	51	50	50	50
Cumulative	Events	0	1	3	3	4	4	4
pN0(mol <sub>Int</sub> )	Patients	16	14	13	8	8	8	8
Cumulative	Events	0	2	3	8	8	8	8
pN0(mol <sub>High</sub> )	Patients	53	41	29	18	14	14	14
Cumulative	Events	0	12	24	35	39	39	39



	Months	0	6	12	18	24	30	36
pN0(mol <sub>Low</sub> )	Patients	67	62	55	44	33	19	17
Cumulative	Events	0	1	1	1	2	2	2
pN0(mol <sub>Int</sub> )	Patients	9	6	1	1	1	1	1
Cumulative	Events	0	0	1	3	3	3	3
pN0(mol <sub>High</sub> )	Patients	21	14	10	7	5	3	2
Cumulative	Events	0	6	10	13	15	15	15



	Months	0	6	12	18	24	30	36
pN0(mol <sub>Low</sub> )	Patients	56	55	47	36	27	15	14
Cumulative	Events	0	0	1	1	1	2	2
pN0(mol <sub>Int</sub> )	Patients	9	8	7	3	2	2	2
Cumulative	Events	0	0	0	2	3	3	3
pN0(mol <sub>High</sub> )	Patients	32	22	17	13	10	7	5
Cumulative	Events	0	9	13	17	20	20	20