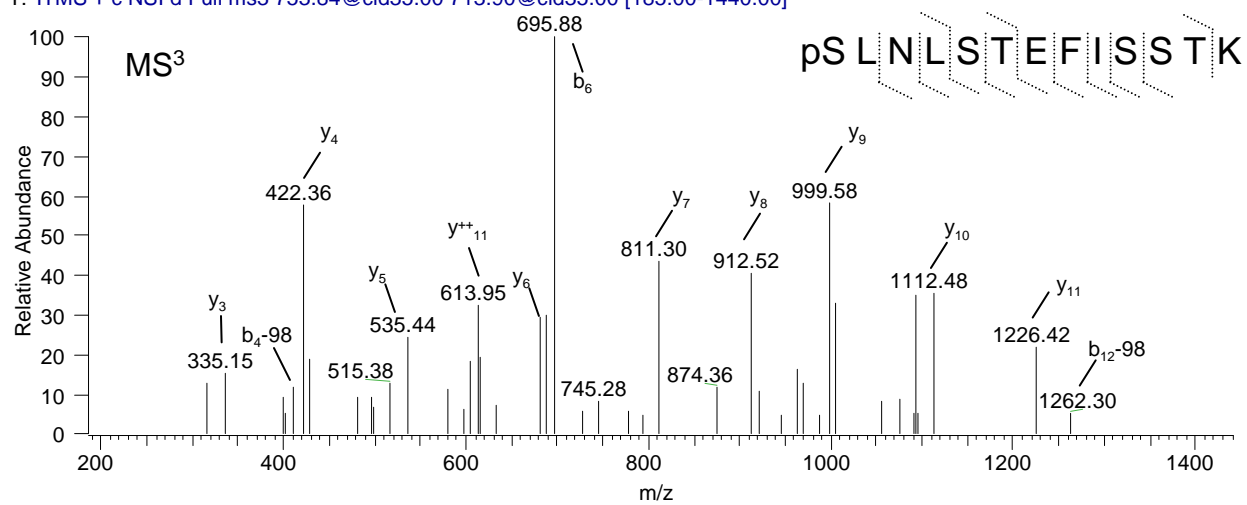


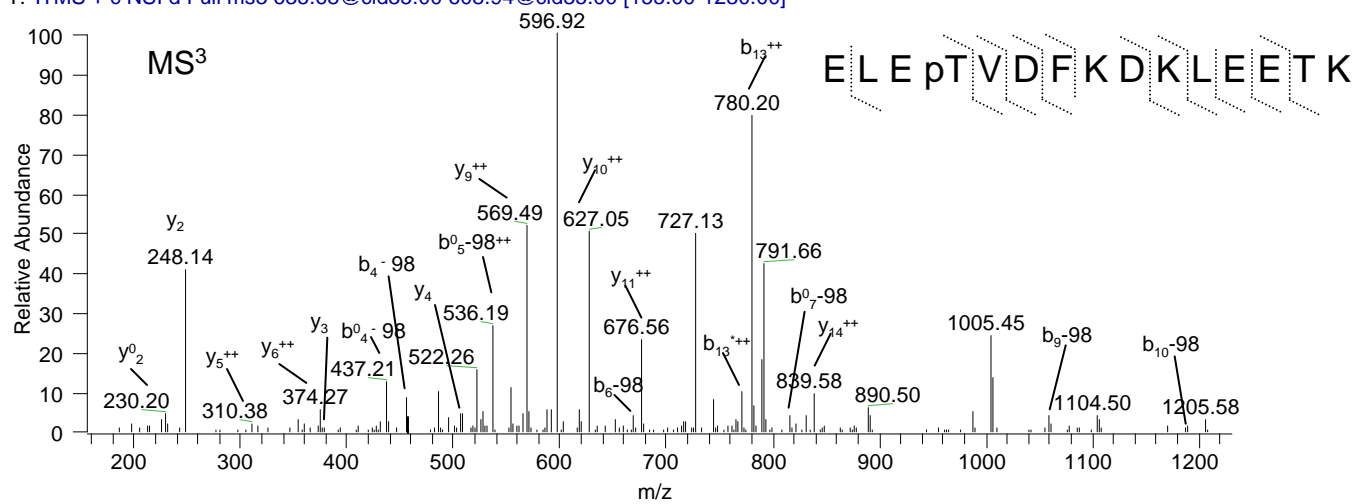
A

T: ITMS + c NSI d Full ms3 753.84@cid35.00 713.90@cid35.00 [185.00-1440.00]



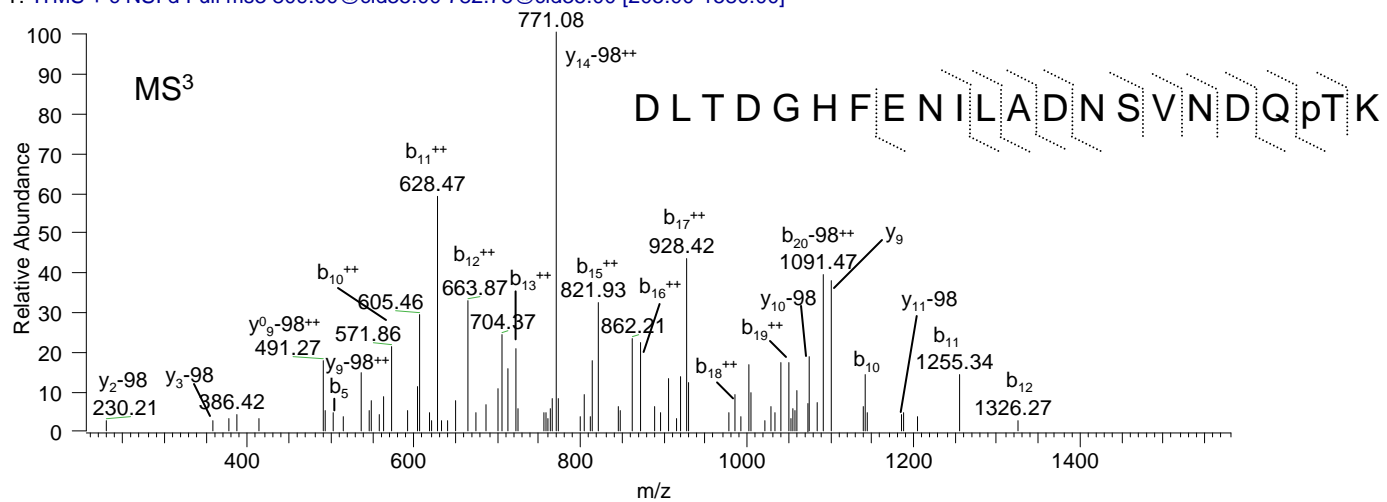
B

T: ITMS + c NSI d Full ms3 635.68@cid35.00 608.94@cid35.00 [155.00-1230.00]



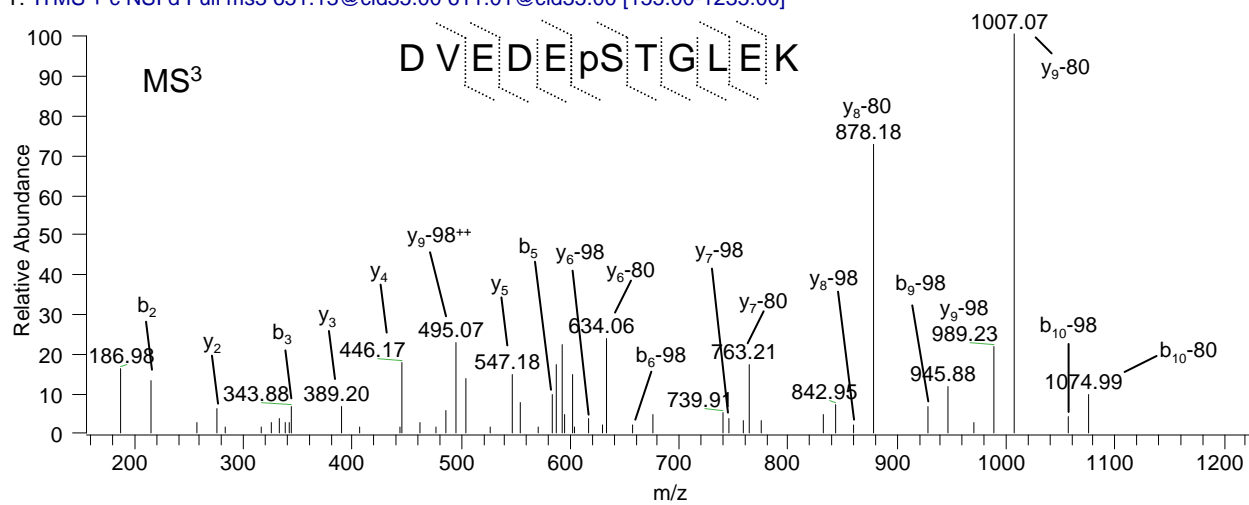
C

T: ITMS + c NSI d Full ms3 809.60@cid35.00 782.75@cid35.00 [205.00-1580.00]



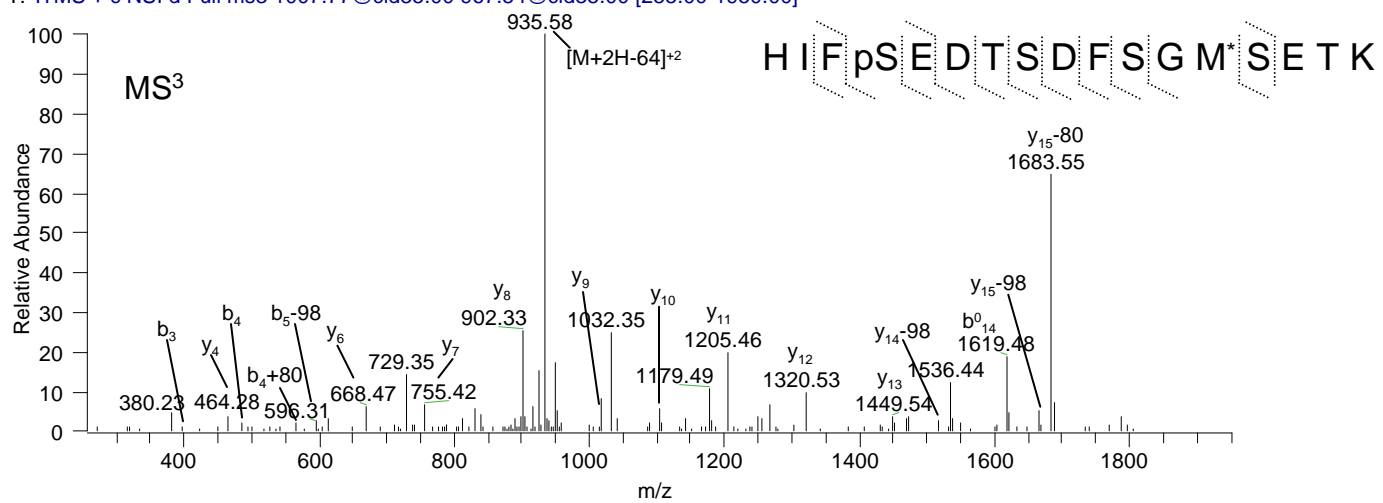
D

T: ITMS + c NSI d Full ms3 651.13@cid35.00 611.01@cid35.00 [155.00-1235.00]



E

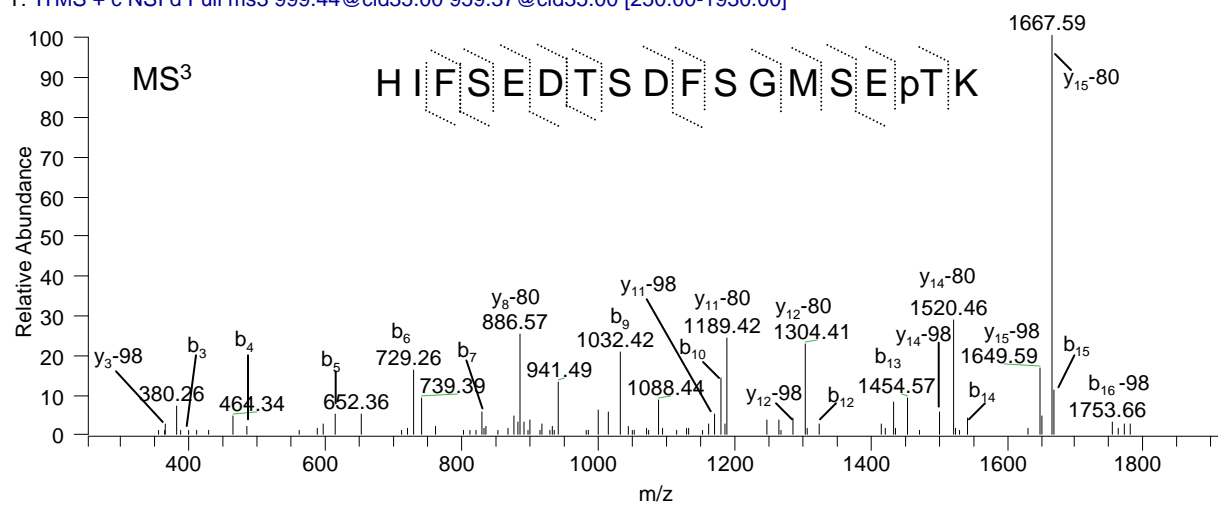
T: ITMS + c NSI d Full ms3 1007.77@cid35.00 967.54@cid35.00 [255.00-1950.00]



\*Methionine oxidation

F

T: ITMS + c NSI d Full ms3 999.44@cid35.00 959.37@cid35.00 [250.00-1930.00]



G

T: ITMS + c NSI d Full ms3 559.32@cid35.00 519.22@cid35.00 [130.00-1050.00]

