

Fig. S1

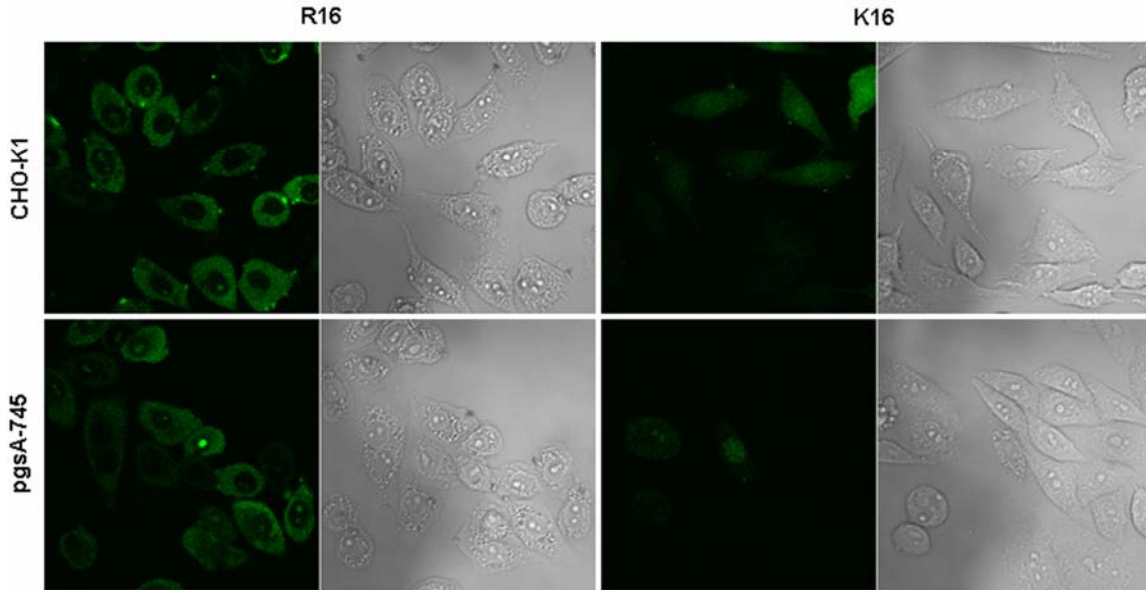


FIGURE S1. Internalization of R₁₆ and K₁₆ peptides in wild-type and GAG-deficient CHO cells

FITC-labeled R₁₆ and K₁₆ peptides (10 μ M) were added to CHO-K1 and pgsA-745 cells in serum free media. After 1h of incubation at 4°C, cells were washed thrice with ice-cold PBS(+) containing 1mg/ml heparin and imaged using a confocal laser scanning microscope.