

Figure S1 (Back et al.)

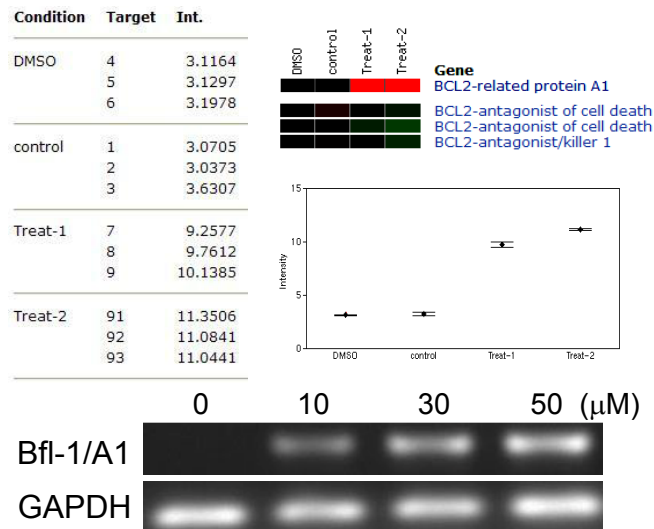


Figure S1: Senescence-associated *Bfl-1/A1* induction as assessed by cDNA microarray, performed on A431 cells treated with 100 μ M RES for 48 h (Treat-1) or 72 h (Treat-2) using the Affymetrix GeneChip HG-U133A 2.0 array. Intensities of *Bfl-1/A1* expression and heat map for *Bfl-1/A1* and other Bcl-2 related genes are shown. DMSO, DMSO/untreated cells; control, untreated cells. Bottom panel: *Bfl-1/A1* expression as assessed by RT-PCR, with GAPDH as an internal control.

ANOVA was performed to analyze any significant difference between the time points and DMSO-treated control, each with three replicates, using GeneSifter (VizX Labs, Seattle, WA). Genes with $p < 0.0001$ were selected for further analysis.