

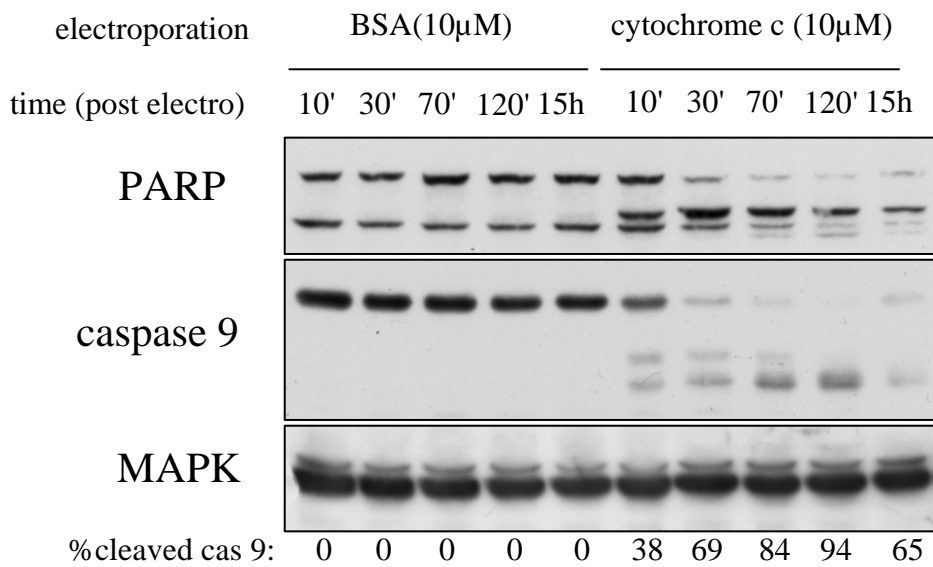
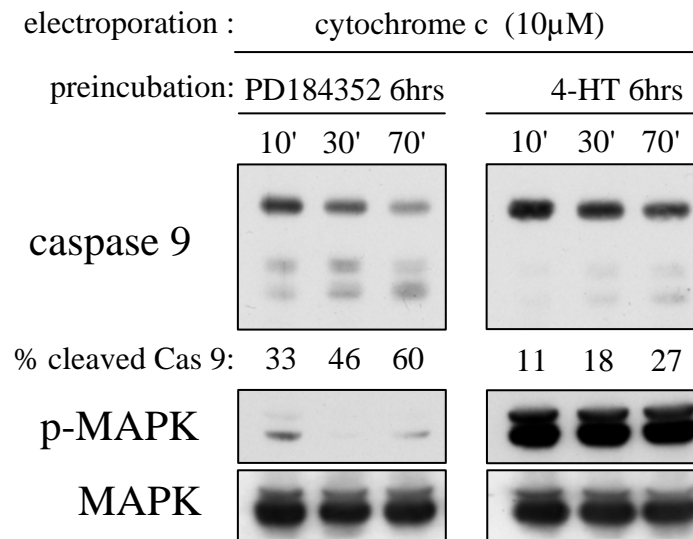
A**B**

Figure S1: 4-HT preincubation prevents caspase 9 cleavage upon cytochrome c electroporation.

A, 10⁶ exponentially growing CCL39- Δ Raf-1:ER cells were trypsinized and resuspended in PBS with the indicated concentration of cytochrome c or BSA, electroporated and allowed to recover in complete medium for the indicated time and lysed with 2%SDS. . The cell lysates were analyzed by immunoblotting. PARP cleavage is indicative of caspase activity.

B, Same as in A, except that the cells (in serum containing medium) were preincubated with a MEK inhibitor or 4-HT for 6 hours