

Figure S1. Cryo-TEM image of a supramolecular structure formed by $C_{16}p53$ in PBS 10mM reveals twisted ribbon morphology (A). Profiles of grey value across the lines indicated in (A) were used to measure the width of the structure at different positions along the long axis of the structure. Scale bar: 100 μm .

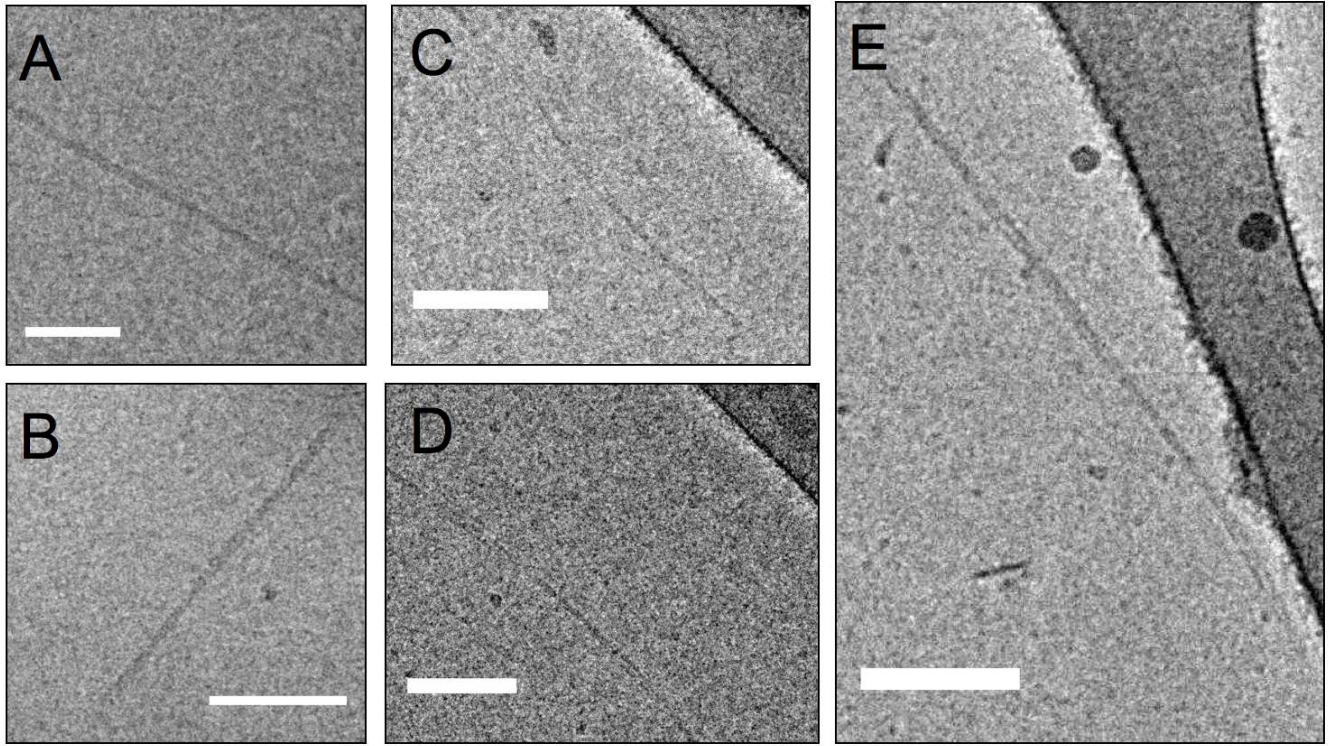


Figure S2. Examples of $C_{16}p53$ structures imaged by cryo-TEM in PBS 10mM. Scale bar: 100 μ m.

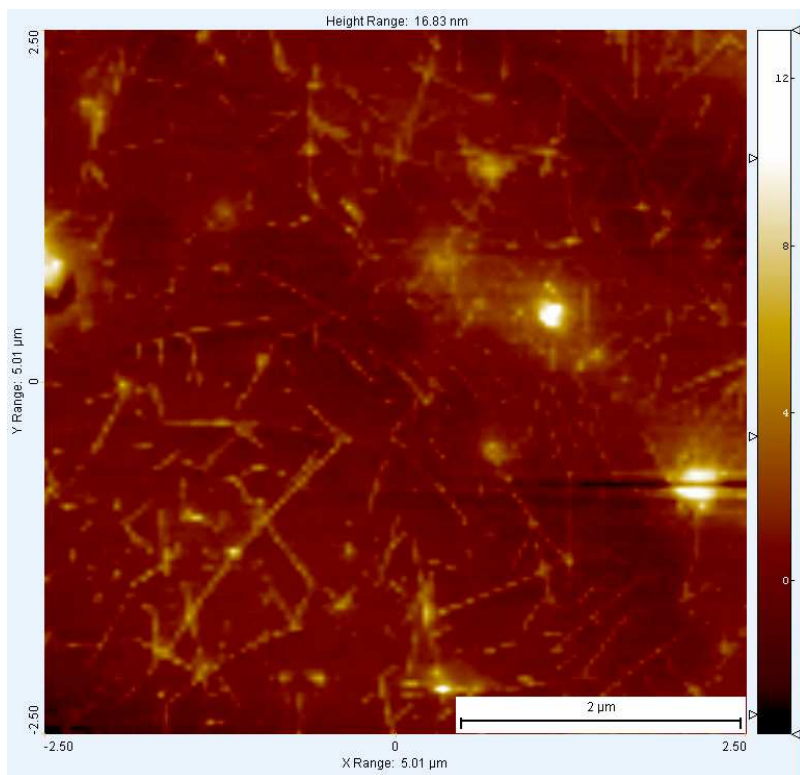


Figure S3. Atomic force micrograph of C₁₆p53 aqueous solution dried on mica.

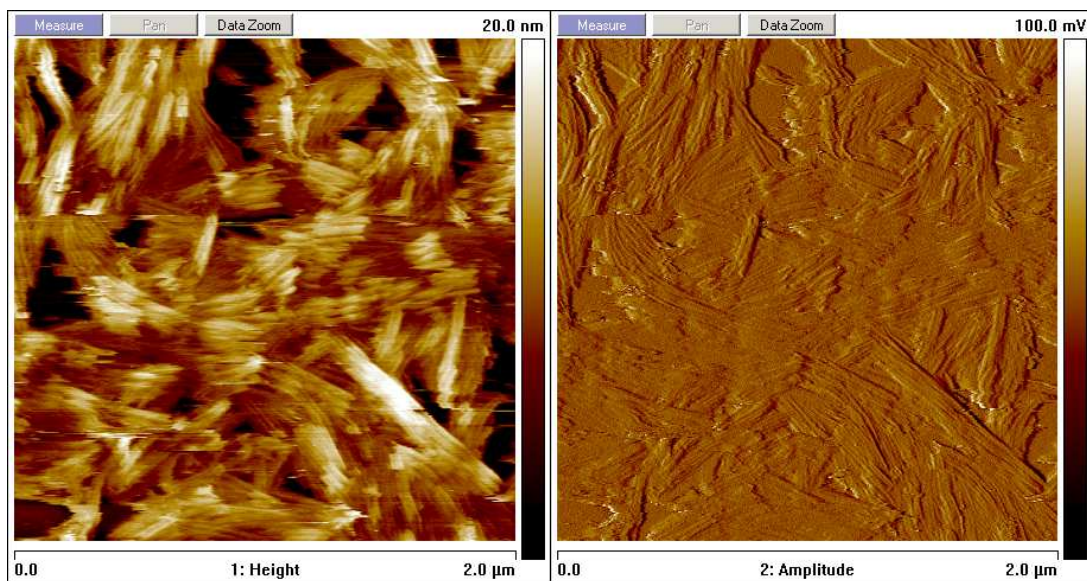


Figure S4. AFM height (left) and amplitude (right) image of C₁₆A₄p53 in presence of 1 M MgCl₂.

Image was acquired in tapping mode in liquid.

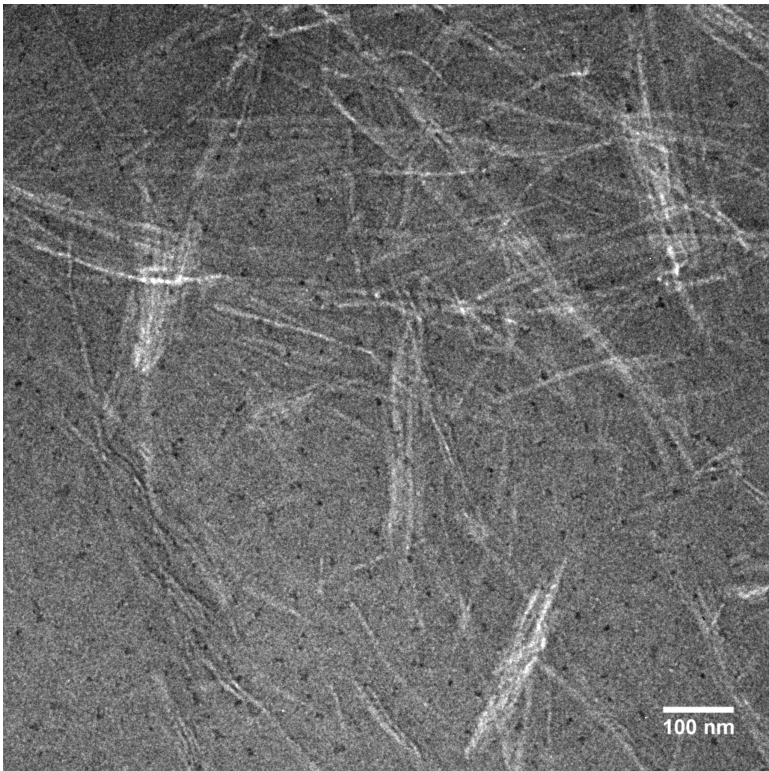


Figure S5. Negative stain TEM of C₁₆A₄p53 in the presence of 1 M MgCl₂.