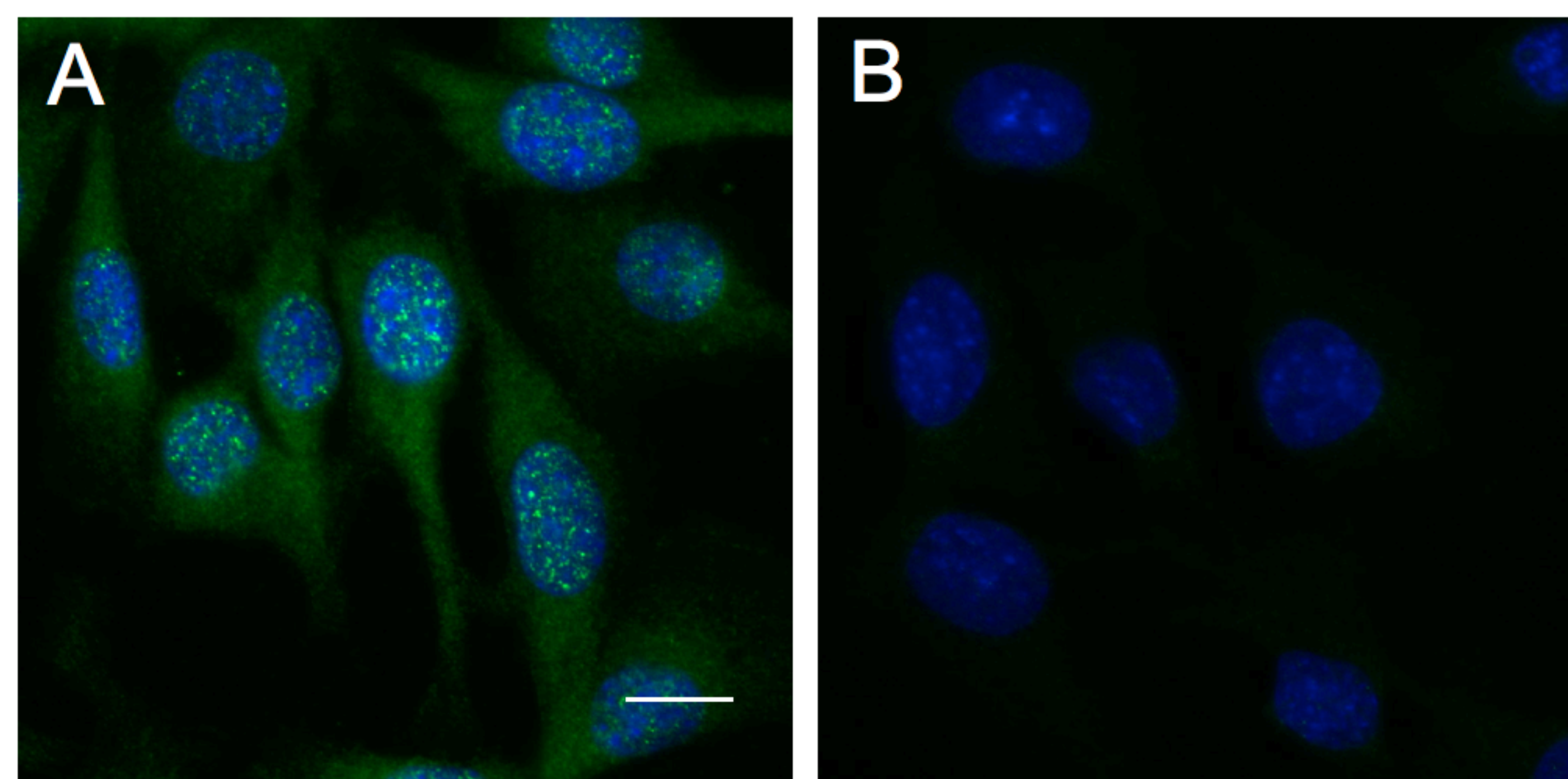


Supplementary Figure 1



Supplementary Fig. 1. MLIP Peptide neutralization of the anti-MLIP sera demonstrates the specificity of the MLIP antibodies in indirect immunocytochemistry A) MLIP (green) is localized to the nucleus (blue, DAPI) and cytosol of HL1 cells. B) Peptide neutralization of the anti-MLIP sera demonstrates the specificity of the MLIP antibodies in immunocytochemistry analysis of MLIP localization