

Supplemental Figures

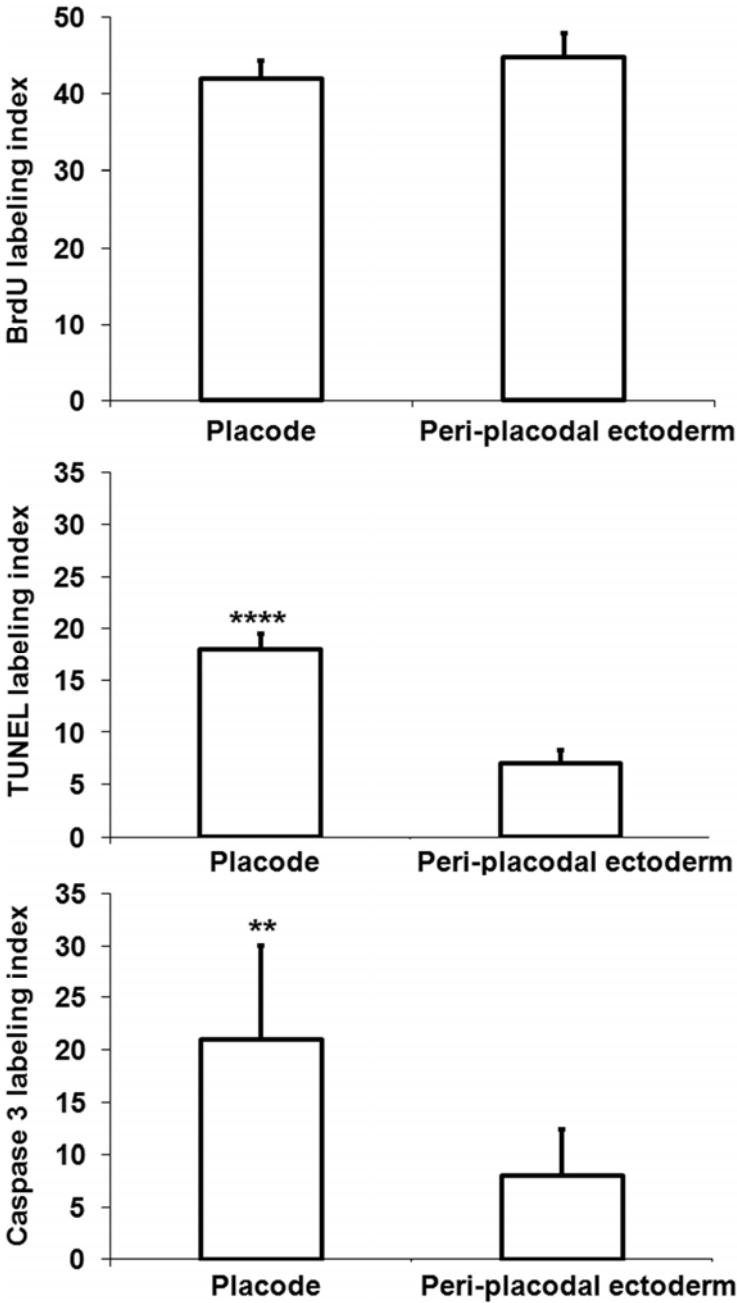


Figure S1. BrdU, TUNEL and Caspase 3 labeling index in the lens placode and the peri-placodal ectoderm cells at E9.5. \*\*  $p < 0.01$ , \*\*\*\*  $p < 0.0001$ .

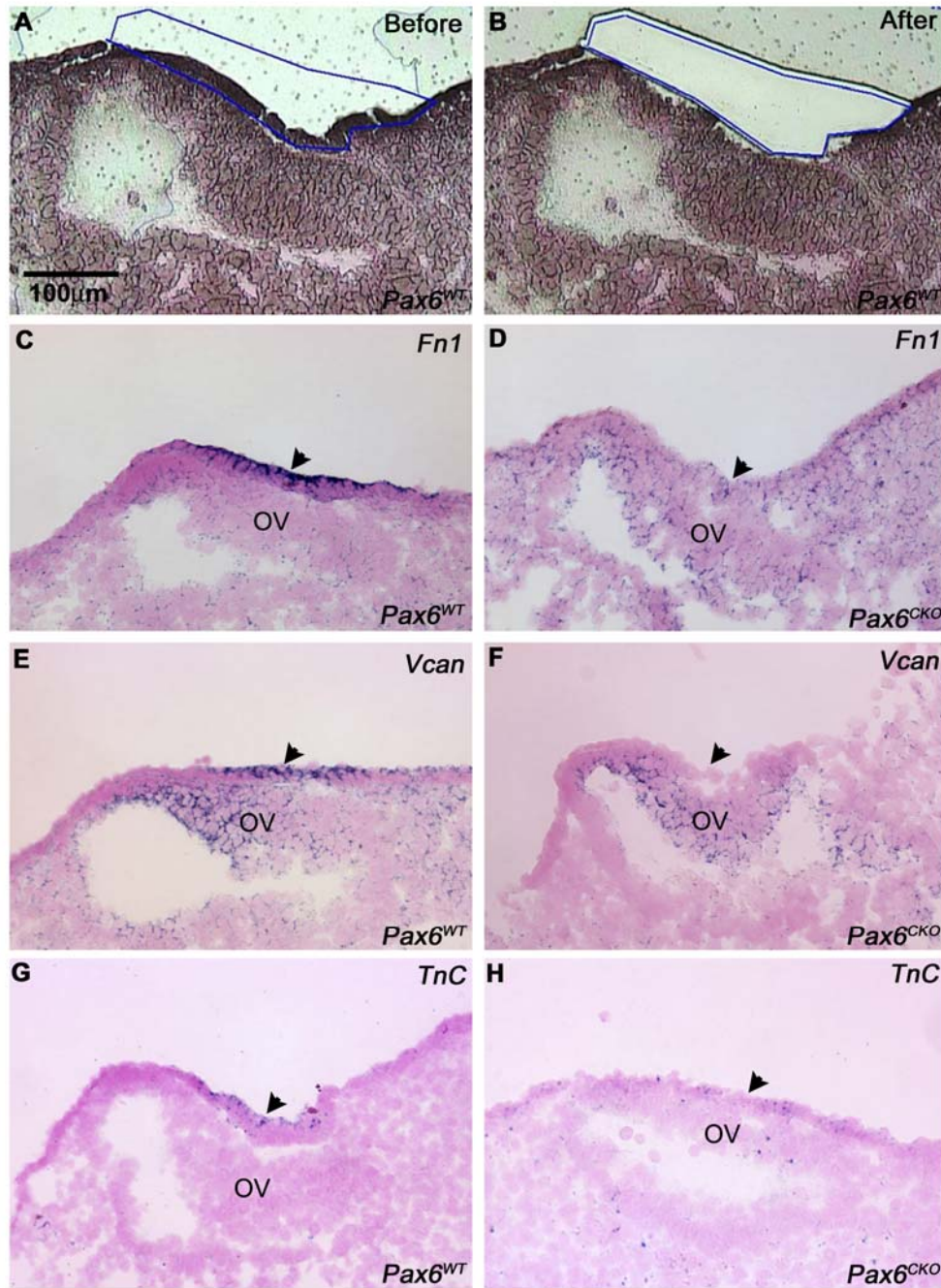


Figure S2. Laser microdissection and verification of microarray data by in situ hybridization. (A) Frontal section of a wild type embryo at the placode stage before laser microdissection. (B) The same section after laser microdissection. (C, D) In situ hybridization in *Pax6<sup>+/+</sup>* and *Pax6<sup>CKO</sup>* embryos for fibronectin (*Fn1*), (E, F) versican (*Vcan*) and (G, H) tenascin-C (*Tnc*). OV – optic vesicle; arrowheads point to the surface ectoderm forming the lens placode or where the placode would have formed.

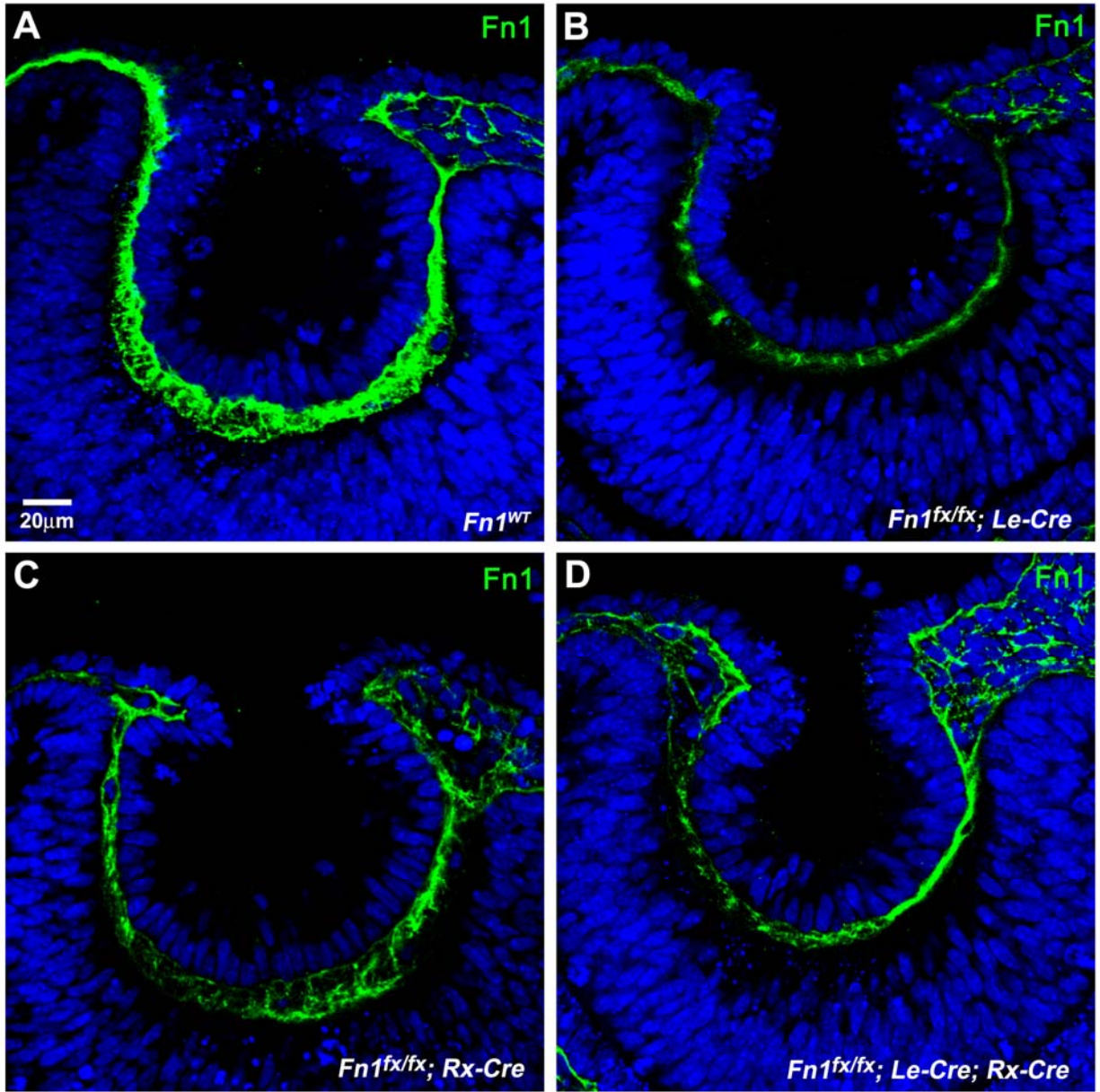


Figure S3. Lens formation and immunostaining for fibronectin in *Fn1* tissue-specific conditional knockouts. Genotypes are shown in the lower right corners. The lens pit formed and fibronectin immunostaining (green) was reduced, but present in the ECM in E10.5 eyes with conditional deletion in the ectoderm (**B**), the optic vesicle (**C**) or in both tissues (**D**). Nuclei are stained blue with DRAQ-5.