

Supplement 6. Cytokine

	MG _{C4-2} vs MG _{RWV}	Pt1-C vs Pt1-N	Pt4-C vs Pt4-N	Pt5-C vs Pt5-N	HS27A _{C4-2} vs HS27A _{RWV}
BMP1	+	+	+	+	+
BMP2	+	-	+	+	+
BMP6	+	N/A	+	+	+
BMP7	+	+	+	+	+
BMP8B	+	+	+	+	+
CSF1	+	N/A	+	N/A	N/A
CSF2	+	N/A	+	-	+
FLT3LG	+	-	-	+	+
GDF3	+	N/A	+	-	+
IFNA14	-	N/A	-	-	N/A
IFNA4	-	N/A	-	N/A	N/A
IFNB1	+	N/A	+	N/A	N/A
IL11	+	+	+	EVEN	+
IL1B	+	+	+	-	+

IL26	+	+	+	+	+
IL6	-	+	-	+	+
IL8	-	+	+	N/A	+
INHBA	N/A	+	-	+	+
PDGFA	+	N/A	+	N/A	+
THPO	+	N/A	+	N/A	+
TNFSF12	+	+	-	+	+
TNFSF13B	+	+	-	+	+
VEGFB	+	+	-	EVEN	+

Supplement 7. Chemokine and receptors

	MG _{C4-2} vs MG _{RWV}	Pt1-C vs Pt1-N	Pt4-C vs Pt4-N	Pt5-C vs Pt5-N	HS27A _{C4-2} vs HS27A _{RWV}
BDNF	+	+	+	-	+
CCL11	+	-	+	+	N/A
CCL15	+	-	-	+	+
CCL2	-	+	-	+	+
CCL21	+	+	+	-	+
CCL25	+	+	+	-	+
CCL28	+	N/A	+	+	N/A
CCL5	+	N/A	N/A	N/A	+
CCL7	+	+	-	+	+
CMTM3	+	-	EVEN	EVEN	+
CMTM4	+	+	+	-	-
CMTM6	+	+	+	-	-
CMTM7	+	+	-	+	+
CMTM8	+	+	N/A	N/A	+

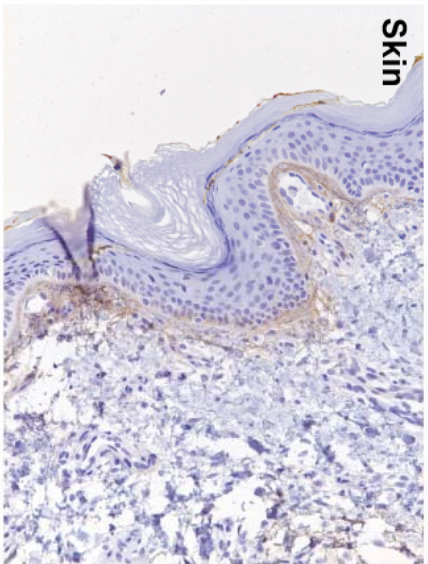
CXCL1	-	+	+	+	+
CXCL12	+	+	-	+	-
CXCL16	+	-	+	+	+
CXCL5	+	+	+	-	+
ECGF1	+	+	+	+	+
GPR2	+	+	+	+	N/A
GPR31	+	+	+	+	N/A
HIF1A	+	+	+	-	+
NFKB1	+	+	+	-	+
SCYE1	+	+	+	EVEN	+
TNFRSF1A	+	-	-	+	+
VHL	+	+	-	+	+

Supplement 8. Tissue array study of the expression of tenascin, versican and osteonectin prostate cancer and benign tissues.

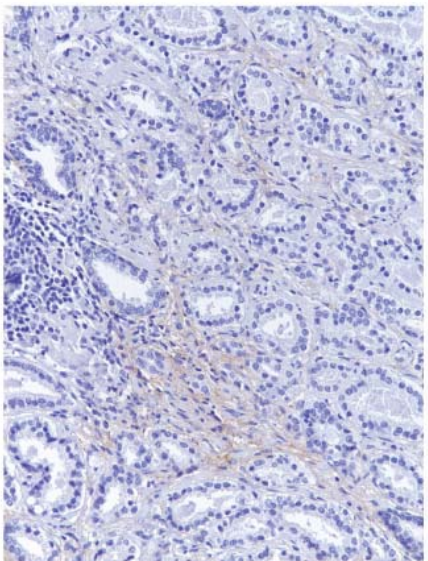
	Tenascin		Versican		Osteonectin	
	Number	Percentage	Number	Percentage	Number	Percentage
Cancer-associated stroma	(++) 20 (+) 36 (-) 41	20% 37% 43%	(++) 11 (+) 34 (-) 43	12.5% 38.5% 49%	(++) 8 (+) 17 (-) 70	8% 18% 74%
Benign-associated stroma (BPH)	(++) 0 (+) 0 (-) 11	0% 0% 100%	(++) 0 (+) 1 (-) 10	0% 9% 91%	(++) 2 (+) 0 (-) 9	18% 0% 88%
Normal prostate stroma	(++) 0 (+) 6 (-) 85	0% 7% 93%	(++) 0 (+) 21 (-) 70	0% 23% 77%	(++) 8 (+) 8 (-) 75	9% 9% 82%
PIN	(++) 0 (+) 1 (-) 3	0% 25% 75%	(++) 0 (+) 1 (-) 3	0% 25% 75%	(++) 0 (+) 0 (-) 4	0% 0% 100%
Inflammation and atrophy	(++) 4 (+) 28 (-) 8	10% 70% 20%	(++) 0 (+) 11 (-) 29	0% 27% 73%	(++) 0 (+) 4 (-) 34	0% 10% 90%
Ejaculatory duct & seminal vesicle	(++) 0 (+) 2 (-) 3	0% 40% 60%	(++) 0 (+) 2 (-) 3	0% 40% 60%	(++) 0 (+) 1 (-) 2	0% 33% 67%
Total tissue stained	228		228		234	

Each tissue was examined at 3 loci to confirm the expression of these proteins. (-) indicates no staining in all 3 views, (+) indicates one out of three was positive and (++) showed two or all were all positively stain. Scoring of these tissues was done by two pathologists from the Department of Pathology, Emory University School of Medicine

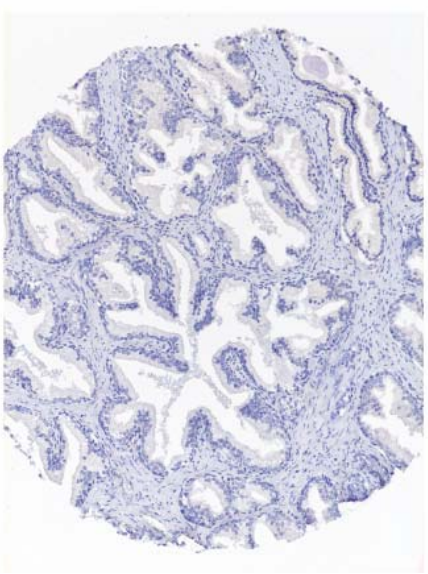
Positive



Prostate Cancer

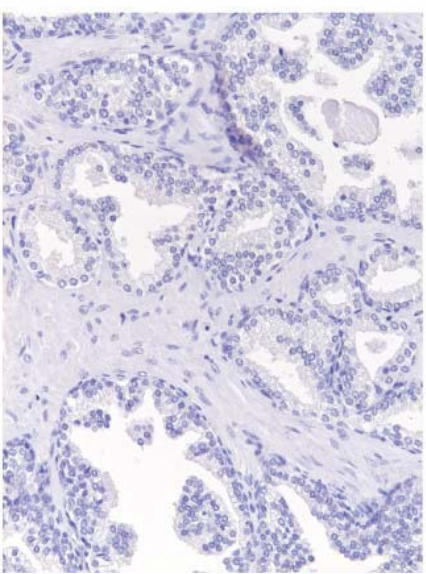
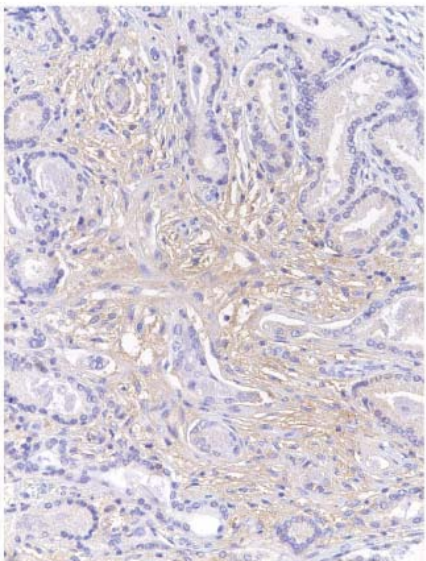
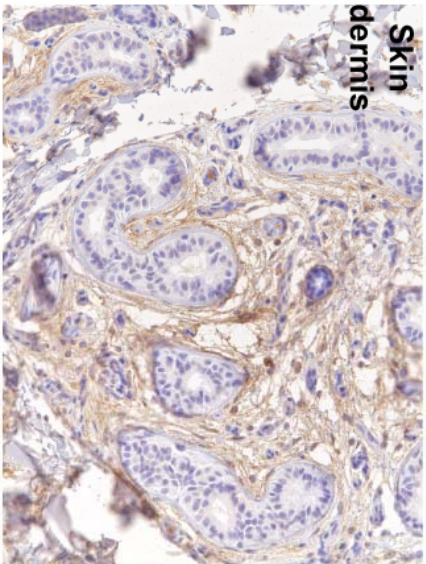


Benign Prostate

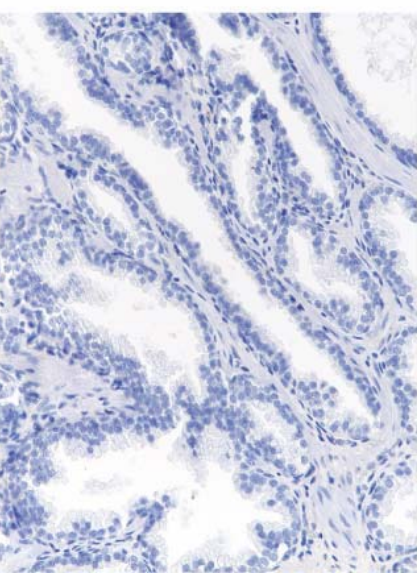
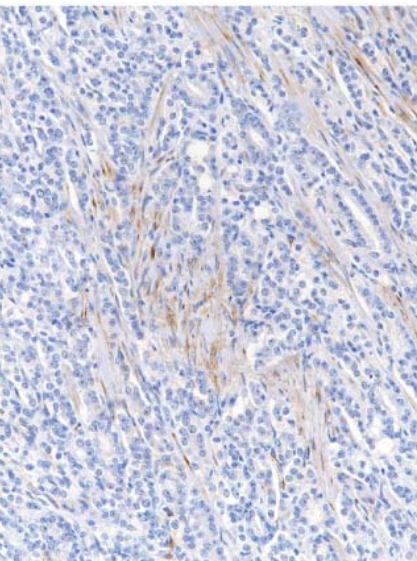
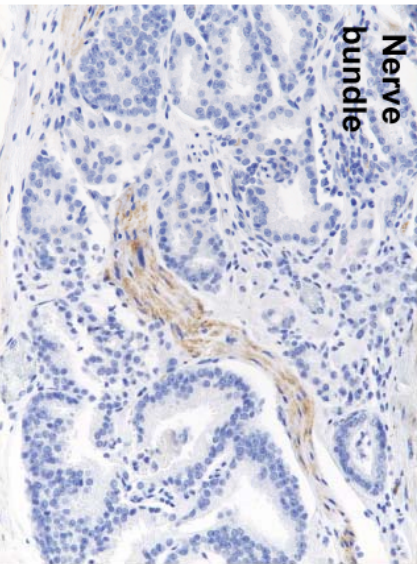


Tenascin

Versican



Nerve bundle



Onsteonectin