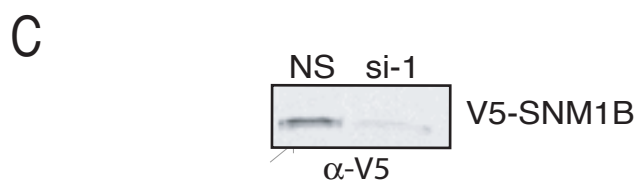
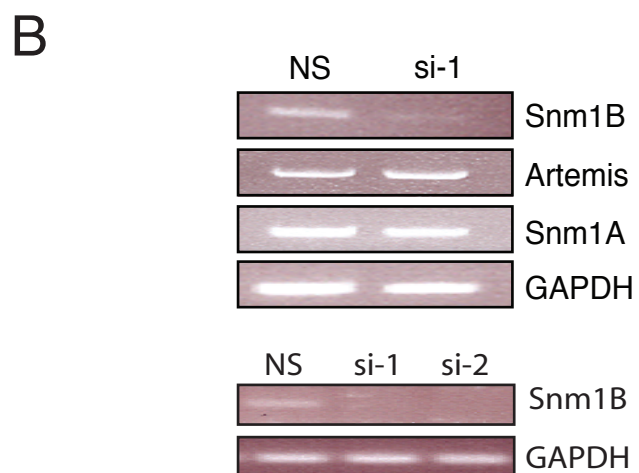
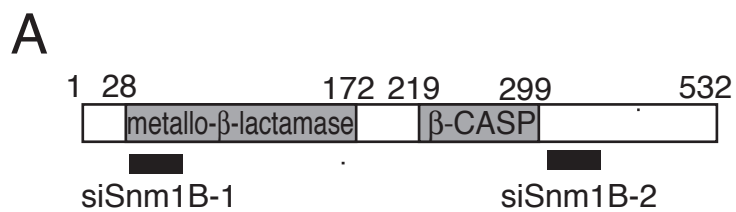
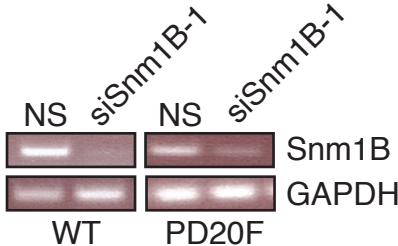


Supplemental Figure 1

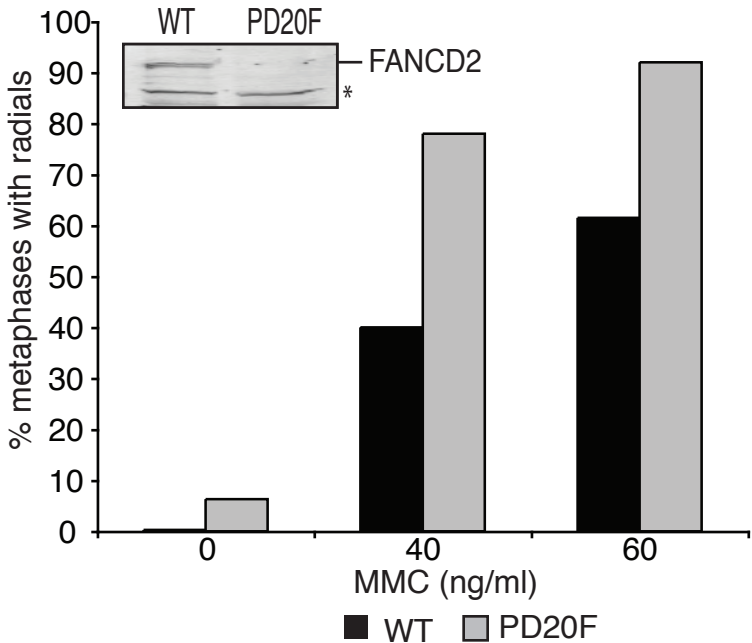


Supplemental Figure 2

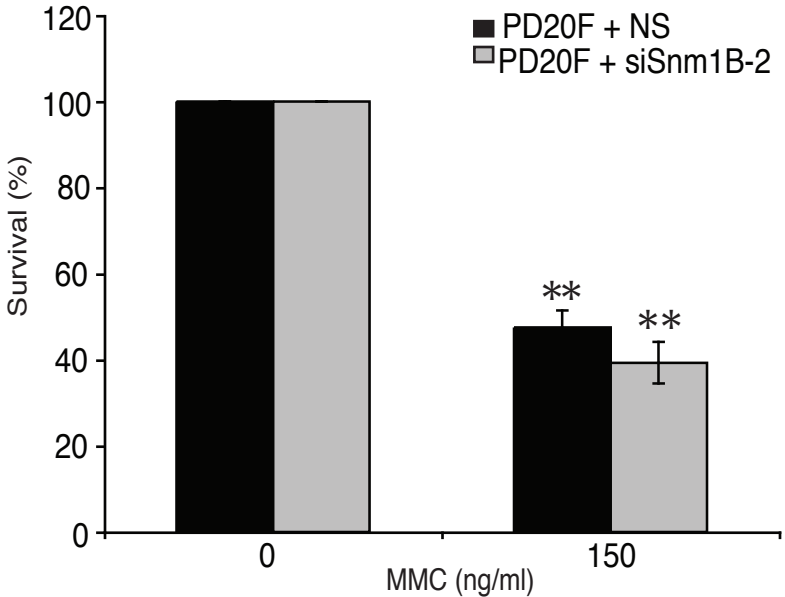
A



B

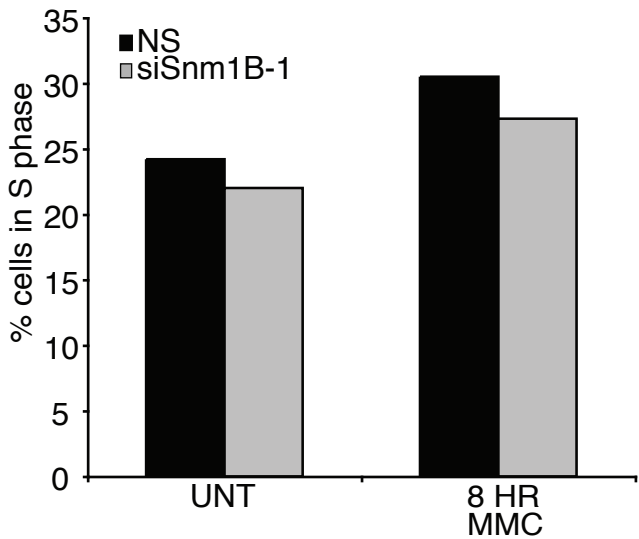
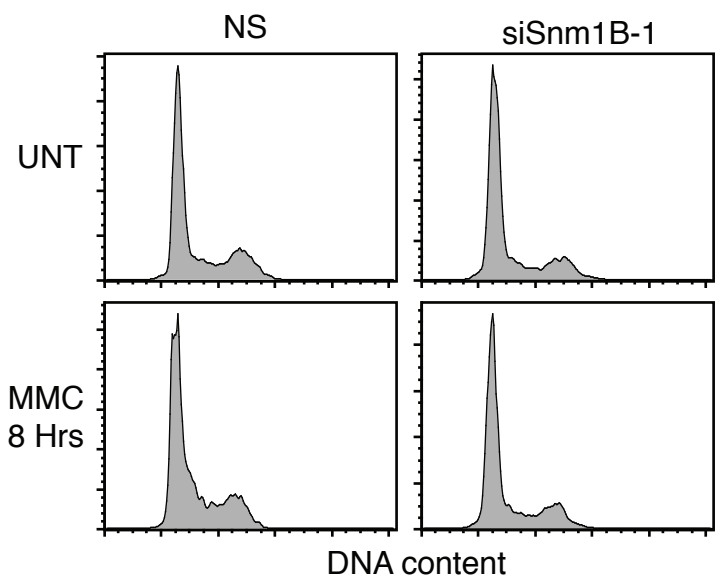


C

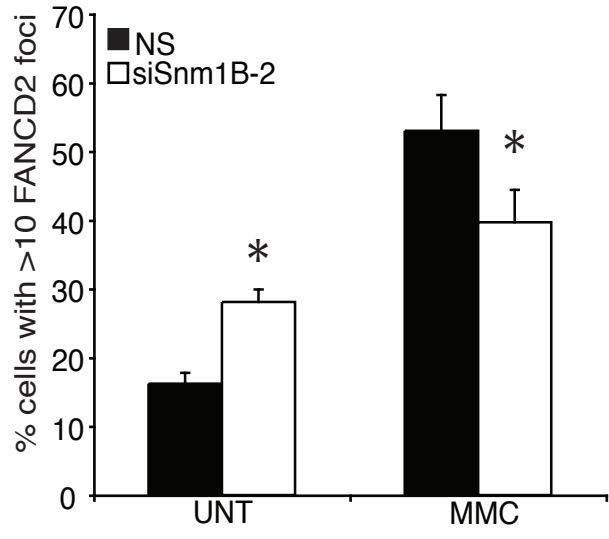
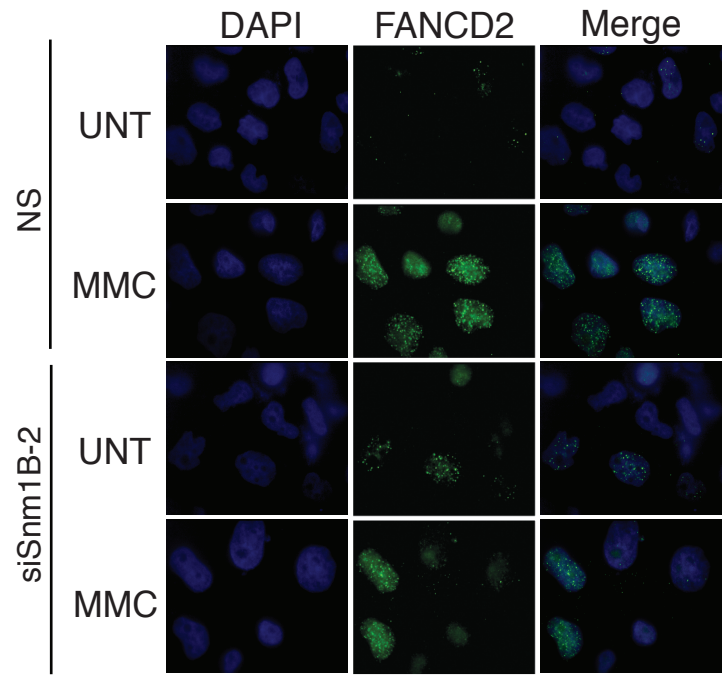


Supplemental Figure 3

A

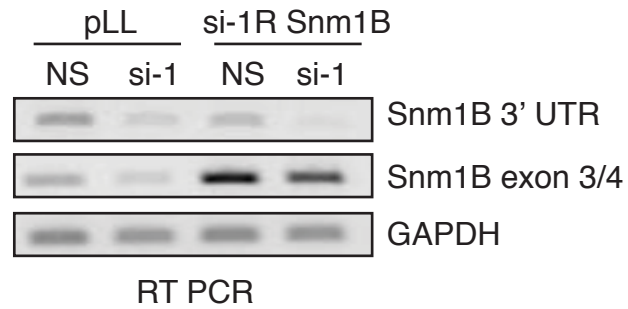


B

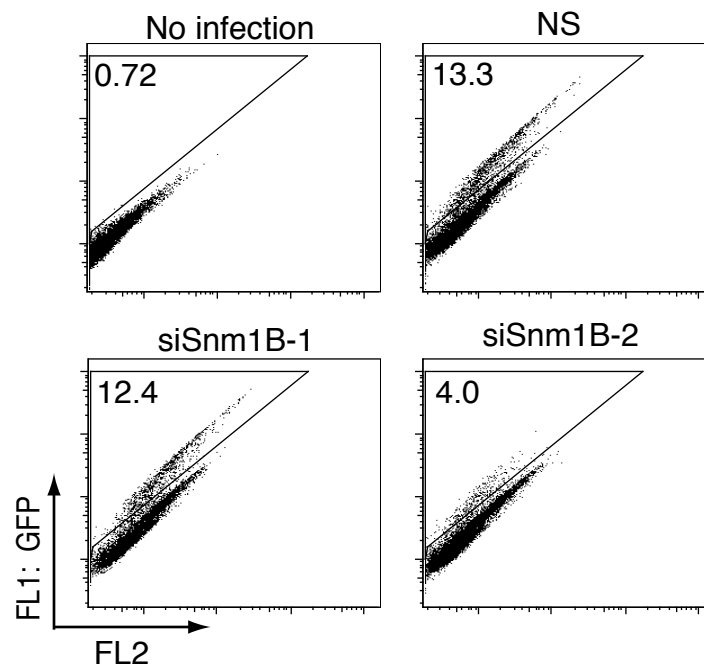


Supplemental Figure 4

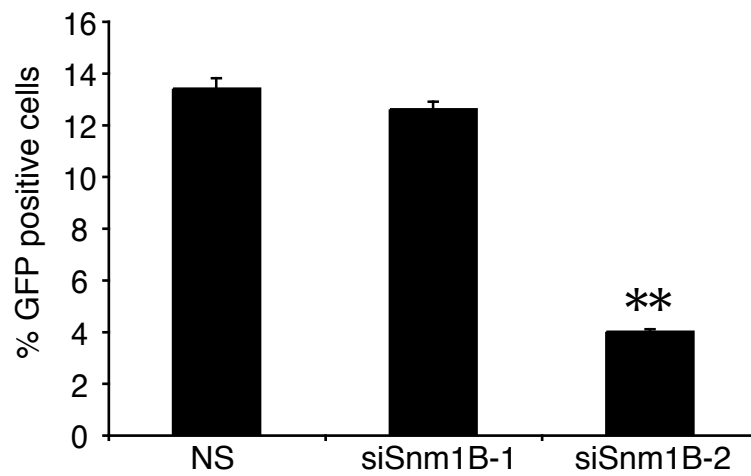
A



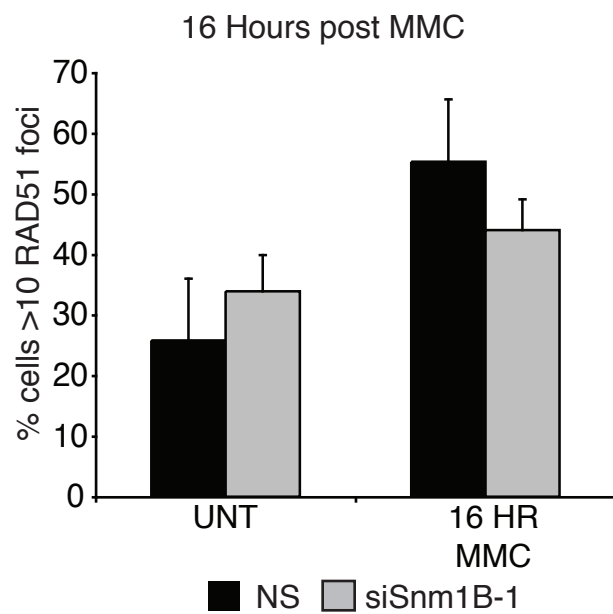
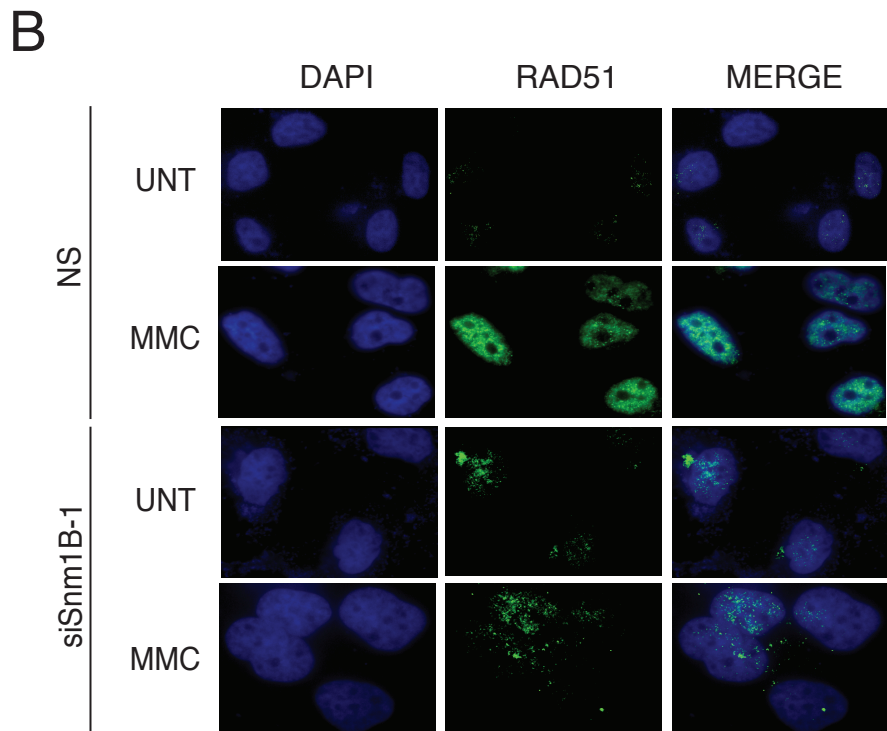
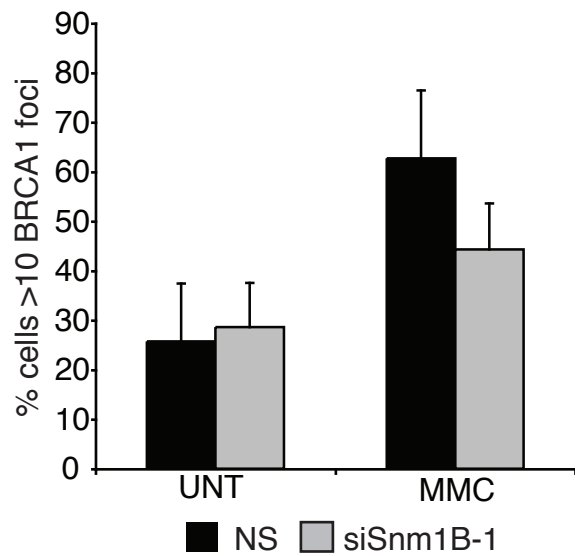
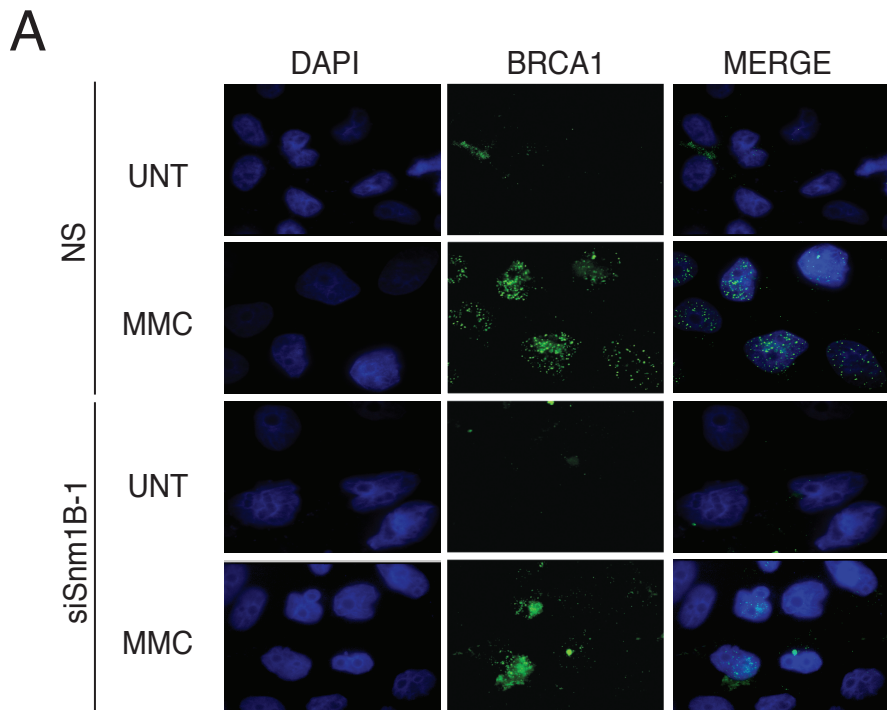
B



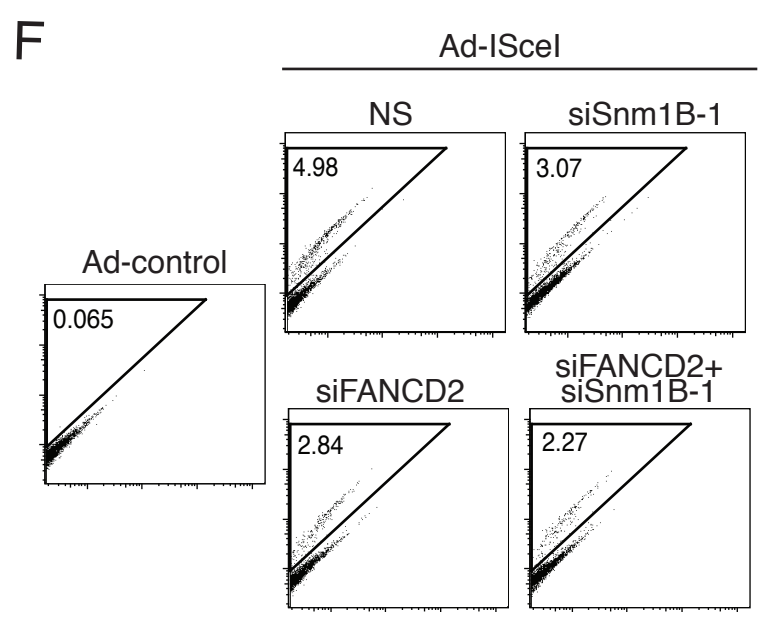
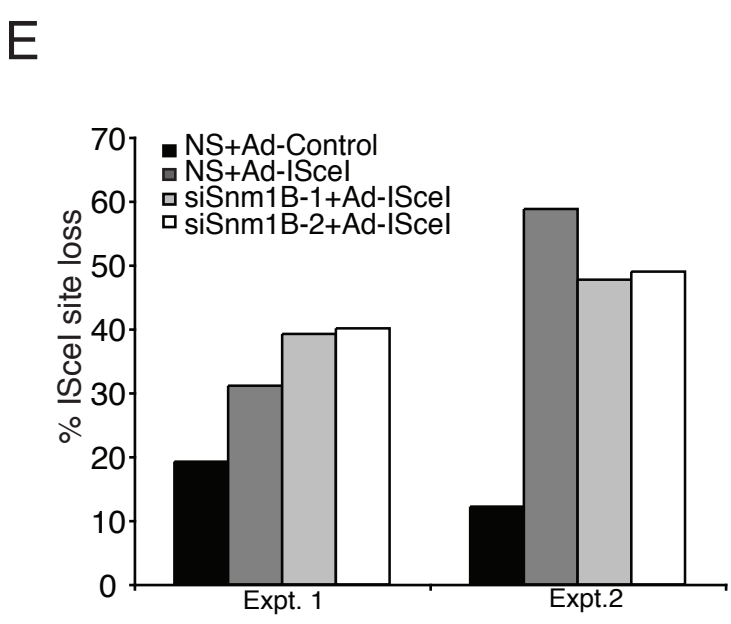
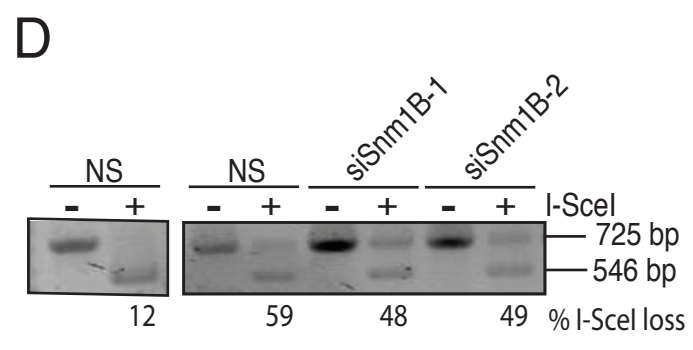
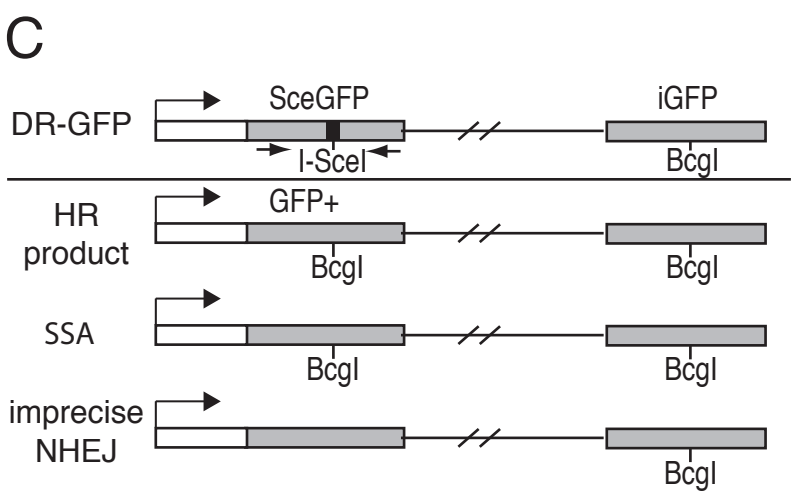
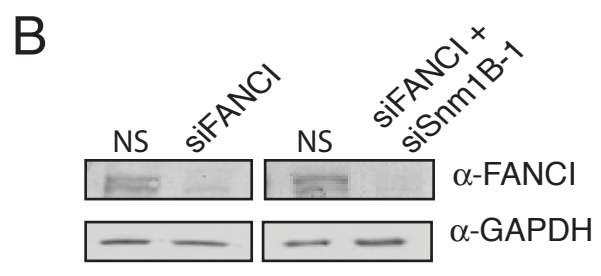
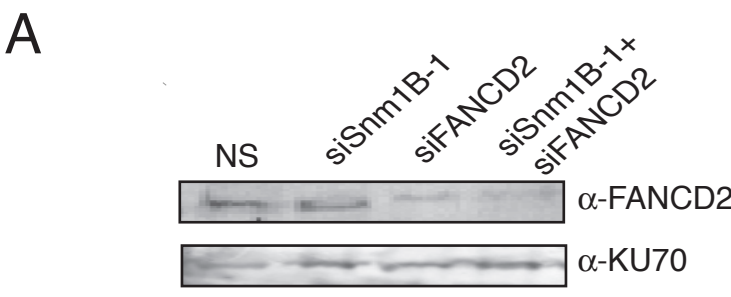
C



Supplemental Figure 5



Supplemental Figure 6



Supplemental Table 1

p-values for UNT (total aberrations and gaps and breaks)

	NS	siSnm1B	siFANCD2	siSnm1B+ siFANCD2	siFANCI	siSnm1B+ siFANCI
NS	-	0.167	0.2327	0.3369	0.0473	0.018
siSnm1B	-	-	1	0.8265	0.4983	0.2832
siFANCD2	-	-	-	0.8247	0.4892	0.274
siSnm1B+FANCD2	-	-	-	-	0.3467	0.1808
siFANCI	-	-	-	-	-	0.8197
siSnm1B+siFANCI	-	-	-	-	-	-

p-values for MMC induced aberrations

	NS	siSnm1B	siFANCD2	siSnm1B+ siFANCD2	siFANCI	siSnm1B+ siFANCI
NS	-	0.0093	0.0001	0.0001	0.0001	0.0018
siSnm1B	-	-	0.0369	0.0116	0.0484	0.8374
siFANCD2	-	-	-	0.4981	1	0.0529
siSnm1B+FANCD2	-	-	-	-	0.4769	0.01
siFANCI	-	-	-	-	-	0.0671
siSnm1B+siFANCI	-	-	-	-	-	-

p values for MMC-induced radials

	NS	siSnm1B	siFANCD2	siSnm1B+ siFANCD2	siFANCI	siSnm1B +siFANCI
NS	-	1	0.0001	0.0001	0.0004	0.1754
siSnm1B	-	-	0.0001	0.0006	0.0027	0.2088
siFANCD2	-	-	-	0.1214	0.0561	0.0001
siSnm1B+FANCD2	-	-	-	-	0.8363	0.02
siFANCI	-	-	-	-	-	0.06
siSnm1B+siFANCI	-	-	-	-	-	-

p-values for MMC-induced gaps and breaks

	NS	siSnm1B	siFANCD2	siSnm1B +siFANCD2	siFANCI	siSnm1B +siFANCI
NS	-	0.0064	0.001	0.0001	0.001	0.002
siSnm1B	-	-	0.3186	0.1338	0.0958	1
siFANCD2	-	-	-	0.6904	0.5619	0.2672
siSnm1B+FANCD2	-	-	-	-	1	0.6904
siFANCI	-	-	-	-	-	1
siSnm1B+siFANCI	-	-	-	-	-	-